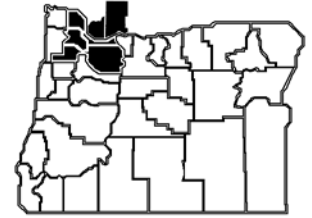




Portland Metro LABOR TRENDS

Clackamas, Columbia, Multnomah, Washington,
Yamhill, Clark (WA) & Skamania (WA) Counties



Amy Vander Vliet, Regional Economist ■ (503) 280-6031 ■ Amy.S.Vandervliet@state.or.us ■ www.QualityInfo.org

July 2010

Economic Indicators

Unemployment Rates

Portland MSA	Seasonally	
	Adjusted	Raw
May 2010	10.3%	10.2%
Apr 2010	10.4%	10.5%
May 2009	10.9%	10.8%
Oregon		
May 2010	10.6%	10.4%
Apr 2010	10.6%	10.7%
May 2009	11.6%	11.3%
United States		
May 2010	9.7%	9.3%
Apr 2010	9.9%	9.5%
May 2009	9.4%	9.1%

Nonfarm Payroll Employment

(not seasonally adjusted)

	May	
	2010	2009
Total	958,500	978,600
Construction	43,800	49,100
Manufacturing	104,500	108,200
Trade, Trans., & Utilities	184,400	189,000
Information	21,900	22,900
Financial Activities	62,600	64,500
Professional & Bus. Svc	122,100	124,500
Educ. & Health Services	135,400	136,000
Leisure & Hospitality	94,000	95,100
Government	154,200	152,600
High Tech *	47,100	47,700

* (manufacturing and nonmanufacturing)

Consumer Price Index (CPI)

United States	May '10	2009
Yearly Change	2.0%	-0.4%

Next release: July 16, 2010

Portland-Salem	2nd Half '09	2009
Yearly Change	0.5%	0.1%

Next release: August 13, 2010

www.bls.gov/cpi

University of Oregon Index of

Economic Indicators

Mar. 2010	89.1	↑
Apr 2010	89.2	

2009 Population

	2008-2009	% Change
Portland Metro	2,217,325	1.2%
Oregon	3,823,465	0.9%

Employment Trends: Local

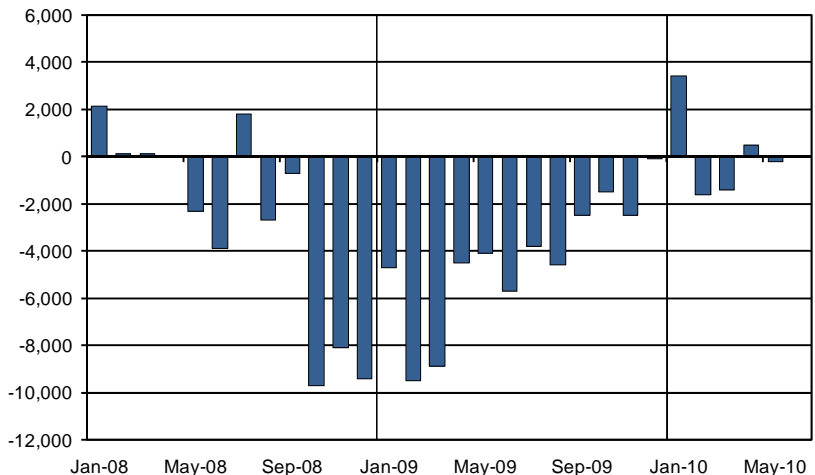
The Portland metro area's seasonally adjusted unemployment rate was 10.3 percent in May, compared to 10.4 percent in April. The year-ago rate was 10.9 percent. An estimated 119,300 area residents were unemployed and seeking work in May.

Seasonally adjusted nonfarm employment declined by 200 jobs after increasing by 500 jobs in April.

Three major industries lost jobs in May. Financial activities continued its slide, shedding 200 jobs. This sector started to decline a year before the recession officially started. Although the pace of job losses eased this year, it appears this sector has yet to hit bottom. Employment levels have fallen to 1997 levels.

Professional and business services cut 100 jobs following three months of growth totaling 3,300 jobs. Gains in the seasonal component of services to buildings and dwellings were offset by typical losses in professional and business services following the April 15 tax deadline.

**Monthly Nonfarm Job Growth/Decline
Portland Metro Area, seasonally adjusted**



Educational and health services declined by 1,300 jobs, all of which occurred in the education component. Employment in the health care component, which added just 100 jobs, fell below year-ago levels for the first time in more than 20 years. This sector continued to add jobs throughout the recession but at an increasingly slower pace. It's likely that the growing number of unemployed residents have put downward pressure on the demand for health care as some elect to forgo medical care.

Construction added 1,000 jobs following gains totaling 700 in March and April. The number of single-family housing permits issued in the first four months of the year is up 67 percent over the same period last year.

Manufacturing edged up 200 jobs following small gains in March and April. May's growth occurred entirely in the nondurable goods component. Over the year, manufacturing employment is down 3,700 jobs. Since its most recent May peak (2006), it's down 21,400 jobs (-17.1%).

Leisure and hospitality gained 1,400 jobs over the month, in line with seasonal expectations.

Hiring at the Census boosted employment in federal government (+2,000) from April to May.

Over the past year, the metro area lost 20,000 jobs (-2.0%). Since peaking in April 2008, employment declined by 86,700 jobs (-8.3%).

Employment Trends: State

Oregon's seasonally adjusted unemployment rate was 10.6 percent in May, the same as in March and April. The rate has been essentially unchanged for the most recent seven months. Oregon's unemployment rate was 11.6 percent in May 2009, which tied June 2009 as Oregon's highest unemployment rate since the early 1980s. The U.S. seasonally adjusted unemployment rate dropped to 9.7 percent in May from 9.9 percent in April.

In May, 202,944 Oregonians were unemployed. In May 2009, 223,474 Oregonians were unemployed. In seasonally adjusted terms, both Oregon's civilian labor force and its number of citizens employed

Portland Metro Labor Trends is published by the Workforce and Economic Research Division of the Oregon Employment Department. Portland Metro Labor Trends also can be found on the Publications page at www.QualityInfo.org.

Material contained in this publication is in the public domain and may be reproduced without any special permission. Please credit Portland Metro Labor Trends, Oregon Employment Department.

Laurie Warner, Director

Graham Slater, Administrator for Workforce and Economic Research

Amy Vander Vliet, Regional Economist
Portland (503) 280-6031

Jill Cuyler, Workforce Analyst
Beaverton and Hillsboro (503) 612-4277

Malcolm Boswell, Workforce Analyst
Gresham (503) 666-1985 x309

Lynn Wallis, Workforce Analyst
Oregon City (971) 673-6453

Christian Kaylor, Workforce Analyst
Portland (503) 280-6032

Jill Cuyler, Workforce Analyst
St Helens (503) 612-4277

Bruce Powers, Field Office Manager
Tualatin (503) 612-4200

Ron Freeman, Field Office Manager
Gresham (503) 669-7112

Christina Aranda, Field Office Manager
Beaverton (503) 526-2750

Michael Newstrom, Field Office Manager
McMinnville (503) 472-5118

Tom Previs, Field Office Manager
Oregon City (971) 673-6400

Cynthia Mullen, Field Office Manager
Portland-North (503) 280-6046

Joyce Aho, Field Office Manager
St Helens (503) 397-4995

Please direct address changes to:
Oregon Employment Department
Workforce and Economic Research
875 Union St NE
Salem OR 97311
Phone (503) 947-1204
TDD (503) 947-1391
e-mail Lmipubs.emp@state.or.us

The Oregon Employment Department is an equal opportunity employer. Auxiliary aids and services are available upon request to individuals with disabilities.

increased modestly in May. This marked the fifth consecutive month of increases in both these figures.

Oregon's seasonally adjusted nonfarm payroll employment was flat in May, following a gain of 5,500 (as revised) in April.

Government added 6,800 jobs in May at a time of year when a gain of 3,700 is expected due to seasonality. The addition of 4,451 intermittent Census workers boosted both federal government and total government for May, adding to the 1,952 already working for the Census in April.

In the private sector, several major industries posted job declines, while only two major industries produced substantial seasonally adjusted job gains: construction and manufacturing.

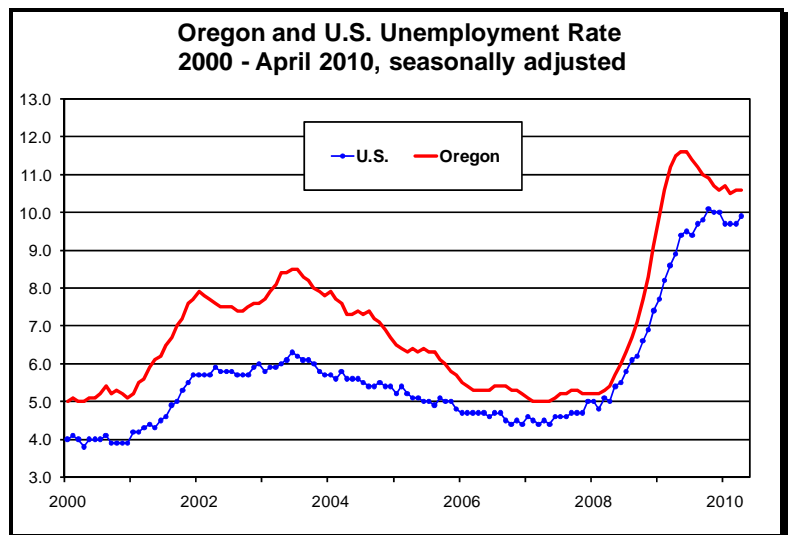
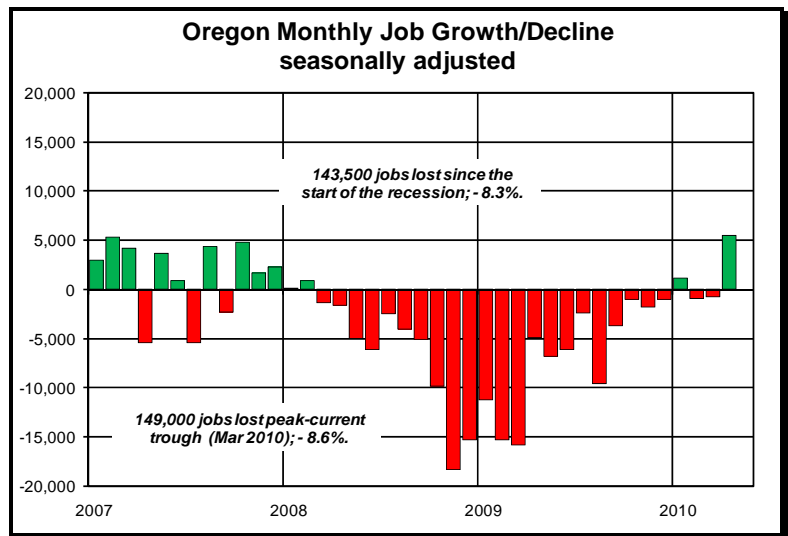
Construction posted its third consecutive seasonally adjusted job gain. It added 1,700 jobs at a time of year when a gain of 1,200 is the normal seasonal movement. Construction employment stood at 64,200 jobs in May, still well below its May 2009 tally of 73,100.

Manufacturing continued to slowly recover from its recent trough. Seasonally adjusted employment rose 700 in May and is now up 1,400 from its February trough. Over the last several months, durable goods employment continued to hover above 110,000, while nondurable goods steadied slightly below 50,000.

Trade, transportation, and utilities normally gains 1,700 jobs due to seasonal factors in May, so this May's flat employment trend was 1,700 below normal seasonal expectations. Retail trade contributed most of the dismal performance as it added only 300 jobs during the normally rapidly growing spring month of May.

Financial activities gave back its April gains, dropping 800 jobs in May. The industry fell below 93,000 for only the second month in more than 12 years.

Professional and business services added only 100 jobs in May when a gain of 800 is the normal seasonal movement. The industry is now close to its December employment level after showing modest gains during the first part of the year.



Educational and health services dropped 1,900 jobs in May, when it normally would drop by only 1,300 for the month. Despite the one-month decline there have been solid long-term gains. Over the past 12 months, health care and social assistance added 1,300 jobs.

Employment Trends: National

The number of unemployed persons was 15.0 million in May. The unemployment rate edged down to 9.7 percent, the same rate as in the first three months of 2010.

Nonfarm payroll employment increased by 431,000 in May, reflecting the addition of 411,000 temporary workers for Census 2010. Total private employment showed little change over the month (+41,000), following increases in March and April. In May, manufacturing, temporary help services, and mining added jobs, while employment in construction declined.



Manufacturing employment increased by 29,000 over the month. Factory employment rose by 126,000 over the past five months. Within manufacturing, both fabricated metals and machinery added jobs in May.

Temporary help services added 31,000 jobs over the month; employment in the industry rose by 362,000 since September 2009.

Employment in mining continued to increase in May, with a gain of 10,000. Support activities for mining accounted for 8,000 of the over-the-month increase. Since October 2009, mining employment expanded by 50,000.

Health care employment was little changed in May (+8,000). Over the prior 12 months, health care employment increased by an average of 20,000 per month.

In May, employment in construction declined by 35,000, largely offsetting industry gains in the prior two months. May's job loss was spread throughout the sector.

Employment in other private-sector industries, including wholesale trade, retail trade, transportation and warehousing, information, financial activities, and leisure and hospitality showed little or no change in May.

Government employment rose by 390,000 in May. The federal government hired 411,000 temporary workers for Census 2010, bringing total temporary census staffing during the payroll survey reference period to 564,000. Employment in state government excluding education decreased by 13,000.

Covered Employment and Wages in the Tri-County Area

The three counties that make up the urban core of the Portland metropolitan area – Clackamas, Multnomah, and Washington – account for about half of the total covered employment in the state of Oregon. In terms of payroll, businesses in these three counties paid out 57 percent of the total covered wages paid in the state in 2009. All three counties are in the state’s top five in terms of average pay per worker. Washington County ranked first in 2009, with average pay of \$51,351. Multnomah, where average pay was \$46,229, ranked third. Clackamas County’s average pay of \$41,386 ranked fifth highest in the state. Statewide average pay in 2009 was \$40,740.

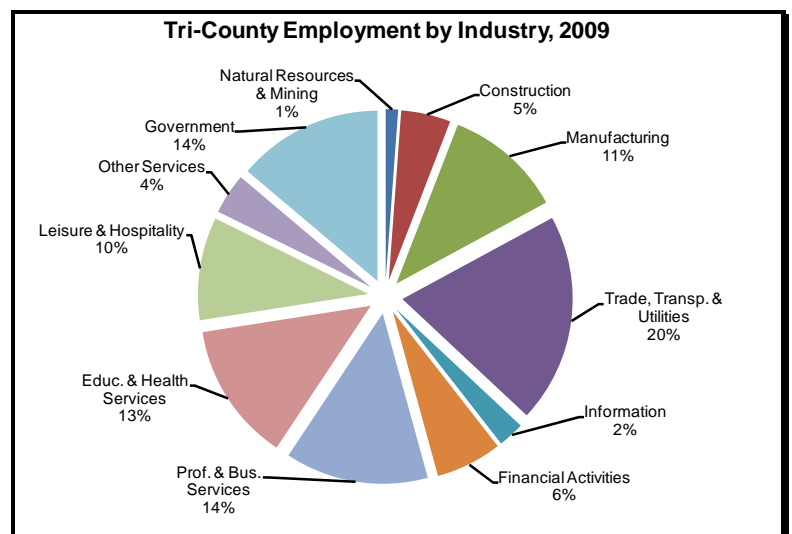
The covered employment and wages series compiles employment and payroll from all employers covered by the unemployment insurance system, which includes most Oregon businesses, nonprofits, and government agencies with hired workers.

Combined, covered businesses in Clackamas, Multnomah and Washington counties employed nearly 800,000 people in 2009, and paid wages totaling over \$37 billion.

While Portland’s urban core makes up a large share of statewide employment, its employment level hasn’t changed much since 2001. Statewide, employment increased about 1 percent between 2001 and 2009. Employment fell early in the decade after the dot.com bust, then recovered and expanded through 2007, and fell again with the Great Recession.

All three counties and the state show effects of the Great Recession. Average annual employment dropped 6 percent between 2008 and 2009 statewide, as well as in Multnomah and Washington counties. Clackamas saw a slightly larger decrease, losing 7 percent over the year. Total payrolls suffered similar declines. Average pay per worker increased 1 percent statewide and in Clackamas County, while Multnomah and Washington counties had negligible increases in average pay between 2008 and 2009 – each adding about \$200 per worker.

Covered Employment and Wages by Area			
		2009 Employment and Wages	Percent Change 2008-2009
Oregon	Employment	1,608,819	-6%
	Payroll	\$65,542,683,403	-6%
	Average Pay	\$40,740	1%
Clackamas	Employment	139,384	-7%
	Payroll	\$5,768,478,050	-6%
	Average Pay	\$41,386	1%
Multnomah	Employment	423,801	-6%
	Payroll	\$19,591,973,451	-5%
	Average Pay	\$46,229	0%
Washington	Employment	231,961	-6%
	Payroll	\$11,911,389,147	-6%
	Average Pay	\$51,351	0%



The tri-county economy is diverse. The largest sector across the region is trade, transportation, and utilities, which makes up one-fifth of employment. Professional and business services accounts for 14 percent of employment, a slightly larger share than statewide (11%). Education and health services and manufacturing round out the industries with more than 10 percent of regional employment – both represent similar shares of the statewide economy. Government accounts for 14 percent of the tri-county employment, compared with 17 percent of employment statewide.

Industry wages are lowest in leisure and hospitality in all three counties, and statewide. The private information sector and federal government are pretty evenly matched for the highest paying sectors in Clackamas and Multnomah counties. Washington County's highest wages are in the manufacturing sector – home to much of Oregon's high-tech manufacturing employment, and information is a close second.

Industry	Clackamas		Multnomah		Washington	
	Jobs	Average Pay	Jobs	Average Pay	Jobs	Average Pay
Total All Ownerships	139,384	\$41,386	423,801	\$46,229	231,961	\$51,351
Total Private Coverage	121,809	\$41,381	353,788	\$44,834	209,638	\$52,215
Natural Resources & Mining	4,208	\$24,068	1,783	\$29,641	3,341	\$26,714
Construction	8,861	\$46,275	17,406	\$56,535	11,176	\$51,808
Manufacturing	16,272	\$52,330	32,155	\$49,061	40,793	\$79,431
Trade, Transportation. & Utilities	30,923	\$38,131	79,677	\$39,307	47,228	\$51,947
Information	2,176	\$64,329	9,801	\$70,887	7,897	\$76,406
Financial Activities	7,401	\$54,430	29,092	\$60,254	13,352	\$52,913
Professional & Business Services	15,087	\$49,670	61,013	\$58,318	31,922	\$47,376
Education & Health Services	18,393	\$46,521	59,347	\$44,508	27,169	\$43,281
Leisure & Hospitality	13,073	\$15,977	45,182	\$19,964	19,373	\$16,530
Other Services	5,348	\$25,917	18,205	\$30,754	7,311	\$35,822
Total All Government	17,575	\$41,415	70,012	\$53,280	22,324	\$43,233
Federal Government	1,371	\$62,496	12,617	\$70,521	856	\$58,005
State Government	2,285	\$32,079	10,036	\$39,874	2,618	\$37,313
Local Government	13,919	\$40,872	47,360	\$51,527	18,850	\$43,384

Around the Region

A listing of employment-related events making recent news

- **H&M**, the popular Swedish clothier, will open at **Pioneer Place** in **Portland**. *Portland Business Journal*, 5-27-10
- **Agave Grill**, a Mexican restaurant, opened at **Bridgeport Village** in **Tigard**. *The Oregonian*, 5-29-10
- The **City of Portland** will eliminate 17 positions in its **Bureau of Development Services**. *Daily Journal of Commerce*, 5-27-10
- **Withers Lumber** opened in **Molalla**. *Molalla Pioneer*, 5-27-10
- **Forest Grove Lumber** in **McMinnville** closed. It employed 50 people. *News Register*, 5-30-10
- **Umpqua Bank** opened a branch in the **Sellwood** area of **Portland**. *Portland Business Journal*, 5-19-10
- **Piccolina** – a resale store offering children’s clothing, maternity wear, books, toys, and new locally handcrafted items – opened in southeast **Portland**. *The Bee*, 5-5-10
- Several businesses have opened in **Portland’s Sellwood-Westmoreland area**. They include **Bishops Barbershop**; **The Barbers**; **Urban’wiches**; **Oregon Ice Works**; **Unique Antique**; **WedPortland**, a wedding and events planner; **Portland Real Estate LLC**; and **Qmedtrix**, a medical record auditing firm. *The Bee*, 6-8-10
- **Gresham Integrated Care** clinic opened. It accommodates training for students and interns through chiropractic treatment, massage therapy, and naturopathic medicine. *Gresham Outlook*, 5-19-10
- **The Dollar Store** in **Newberg** will close. It employs seven people. *Newberg Graphic*, 6-2-10
- **Pasta Veloce** at the **Scholls Center** in **Tigard** closed. *Daily Journal of Commerce*, 5-26-10
- **Five Guys Burgers and Fries** opened a second **Vancouver** franchise. It employs 47 full-and part-time workers. *The Columbian*, 6-8-10
- **Kryptiq Corp.**, a software company in **Hillsboro** that produces software used by health care providers, employs about 88 people and plans to increase its workforce to around 100 by the end of the year. *The Oregonian*, 6-15-10
- **World Class Wines** opened in **Lake Oswego**. *The Oregonian*, 5-29-10
- **Rivers Edge Cafe & Catering** opened a second **Portland** location. *Daily Journal of Commerce*, 5-4-10
- **Estate Auctions NW** opened in **St. Helens**. It employs two people. *The Chronicle*, 6-2-10

-
- **The Charrette Art Studio** opened in **Carlton**. *News Register, 5-25-10*
 - **Silkwood**, a boutique offering a vintage-inspired children's clothing line and designer women's apparel, opened in **Lake Oswego**. *The Oregonian, 6-8-10*
 - **Corkscrew Wine Bar** opened in **southeast Portland**. *The Bee, 6-8-10*
 - **Allium**, a bistro offering American and European cuisine, opened in **West Linn**. *The Oregonian, 5-29-10*
 - **The Dapper Frog** gallery will open in **Portland's Pearl District** in July. *News Register, 5-25-10*
 - **IBM** anticipates hiring 600 new employees in Oregon as it introduces new mortgage software tied to its recent acquisition of Beaverton-based Wilshire Credit Corp. About 90 of the new jobs are expected to be at Wilshire's office in **Salem**, with the remainder in **Beaverton**. *The Oregonian, 6-21-10*
 - **Ajinomoto Frozen Foods**, an ethnic frozen foods manufacturer, is in the midst of a \$12.5-million expansion at its **north Portland** facility. Once complete, the company plans to add 30 employees. It currently has 160 full-time and 40 temporary workers. *Daily Journal of Commerce, 6-23-10*
 - **Happy Family Restaurant** opened in **Newberg**. It offers Cantonese-style Chinese food. *Newberg Graphic, 5-19-10*
 - **Honest-1 Auto Care** opened in **Gresham**. *Gresham Outlook, 6-23-10*
 - **Lowe's** home improvement plans to build a store in **Beaverton**. It is expected to create more than 100 jobs. *The Oregonian, 6-21-10*
 - **Papa John's** pizza opened in **Lake Oswego**. *The Oregonian, 5-29-10*
 - Two Mexican restaurants – **La Superior Restaurante** and **Casa Mariachi** – opened in Beaverton. *The Oregonian, 6-11-10*
 - **Danner Factory Store** will open in **northeast Portland**. *Gresham Outlook, 6-16-10*
 - **Treasure Cat Consignments** will open in **McMinnaville**. It will offer outdoor games, athletic equipment, furniture, home decor, jewelry, electronics, and movies. *News-Register, 6-8-10*
 - **Real Deal Grocery** opened in **Molalla**. *Molalla Pioneer, 6-16-10*

Portland-Vancouver-Hillsboro MSA Labor Force and Industry Employment

	May	April	May	---Change from---	
	2010	2010	2009	April 2010	May 2009
LABOR FORCE STATUS					
Civilian Labor Force	1,166,100	1,175,300	1,180,900	-9,200	-14,800
Unemployed	119,300	123,100	127,800	-3,800	-8,500
Unemployment Rate	10.2%	10.5%	10.8%		
Unemployment Rate, seasonally adjusted	10.3%	10.4%	10.9%		
Total Employed	1,046,800	1,052,200	1,053,200	-5,400	-6,400
				3,400	-37,100
NONFARM PAYROLL EMPLOYMENT					
Total nonfarm	958,500	953,900	978,600	4,600	-20,100
Total nonfarm, seasonally adjusted	956,500	956,700	976,500	-200	-20,000
Total private	804,300	802,500	826,000	1,800	-21,700
Mining and logging	1,100	1,000	1,200	100	-100
Construction	43,800	42,800	49,100	1,000	-5,300
Construction of buildings	9,500	9,600	11,000	-100	-1,500
Residential building construction	5,100	5,200	5,600	-100	-500
Nonresidential building construction	4,400	4,400	5,400	0	-1,000
Heavy and civil engineering construction	4,500	4,400	5,000	100	-500
Specialty trade contractors	29,800	28,800	33,100	1,000	-3,300
Manufacturing	104,500	104,300	108,200	200	-3,700
Durable goods	78,000	78,000	81,400	0	-3,400
Wood product manufacturing	3,600	3,500	3,800	100	-200
Primary metal manufacturing	5,600	5,600	6,000	0	-400
Fabricated metal product manufacturing	10,700	10,700	10,900	0	-200
Machinery manufacturing	6,600	6,600	7,000	0	-400
Computer and electronic product manufacturing	32,800	32,800	33,400	0	-600
Semiconductor and electronic component mfg.	25,200	25,200	25,300	0	-100
Electronic instrument manufacturing	4,400	4,400	4,700	0	-300
Transportation equipment manufacturing	6,200	6,200	7,100	0	-900
Nondurable goods	26,500	26,300	26,800	200	-300
Food manufacturing	8,900	8,900	8,900	0	0
Paper manufacturing	3,600	3,600	3,900	0	-300
Trade, transportation, and utilities	184,400	183,900	189,000	500	-4,600
Wholesale trade	53,100	52,900	55,000	200	-1,900
Merchant wholesalers, durable goods	23,900	23,900	25,000	0	-1,100
Merchant wholesalers, nondurable goods	20,800	20,600	21,500	200	-700
Electronic markets and agents and brokers	8,400	8,400	8,500	0	-100
Retail trade	98,900	98,500	99,800	400	-900
Motor vehicle and parts dealers	11,100	11,200	11,300	-100	-200
Food and beverage stores	19,700	19,500	19,700	200	0
Clothing and clothing accessories stores	9,200	9,200	9,900	0	-700
General merchandise stores	20,100	20,000	20,200	100	-100
Transportation, warehousing, and utilities	32,400	32,500	34,200	-100	-1,800
Air transportation	3,700	3,700	3,700	0	0
Truck transportation	9,400	9,400	9,700	0	-300
Couriers and messengers	4,000	4,000	4,300	0	-300
Warehousing and storage	3,400	3,400	3,500	0	-100
Information	21,900	21,800	22,900	100	-1,000
Publishing industries, except internet	8,800	8,800	9,100	0	-300
Software publishers	6,300	6,300	6,300	0	0
Telecommunications	5,300	5,300	5,800	0	-500

Nonfarm Payroll Employment (continued)

	May 2010	April 2010	May 2009	--Change from--	
				April 2010	May 2009
Financial activities	62,600	62,800	64,500	-200	-1,900
Finance and insurance	40,600	40,700	41,600	-100	-1,000
Credit intermediation and related activities	18,600	18,800	19,000	-200	-400
Insurance carriers and related activities	18,100	18,100	18,700	0	-600
Real estate and rental and leasing	22,000	22,100	22,900	-100	-900
Professional and business services	122,100	122,200	124,500	-100	-2,400
Professional and technical services	50,300	50,700	51,800	-400	-1,500
Architectural and engineering services	10,000	10,000	10,900	0	-900
Computer systems design and related services	8,000	7,900	8,000	100	0
Management of companies and enterprises	22,600	22,700	23,600	-100	-1,000
Administrative and waste services	49,200	48,800	49,100	400	100
Administrative and support services	46,800	46,400	46,600	400	200
Employment services	17,900	17,700	16,500	200	1,400
Business support services	6,300	6,400	6,900	-100	-600
Services to buildings and dwellings	13,500	13,200	13,900	300	-400
Educational and health services	135,400	136,700	136,000	-1,300	-600
Educational services	23,900	25,300	24,000	-1,400	-100
Colleges and universities	11,900	13,300	12,000	-1,400	-100
Health care and social assistance	111,500	111,400	112,000	100	-500
Ambulatory health care services	42,000	42,000	42,500	0	-500
Hospitals	28,700	28,700	29,200	0	-500
Nursing and residential care facilities	22,800	22,800	22,400	0	400
Social assistance	18,000	17,900	17,900	100	100
Leisure and hospitality	94,000	92,600	95,100	1,400	-1,100
Arts, entertainment, and recreation	13,900	13,700	14,200	200	-300
Amusement, gambling, and recreation	10,000	9,700	10,300	300	-300
Accommodation and food services	80,100	78,900	80,900	1,200	-800
Accommodation	9,100	8,900	9,000	200	100
Food services and drinking places	71,000	70,000	71,900	1,000	-900
Full-service restaurants	34,700	34,100	35,100	600	-400
Limited-service eating places	29,200	28,800	29,800	400	-600
Other services	34,500	34,400	35,500	100	-1,000
Membership associations and organizations	15,800	15,800	16,400	0	-600
Government	154,200	151,400	152,600	2,800	1,600
Federal government	20,700	18,700	18,900	2,000	1,800
State government	22,800	22,700	22,400	100	400
State education	8,400	8,300	8,300	100	100
Local government	110,700	110,000	111,300	700	-600
Local education	63,500	63,300	63,300	200	200
Labor Disputes	0	0	0	0	0

The most recent month is preliminary, the prior month is revised. Prepared in cooperation with the U.S. Department of Labor, Bureau of Labor Statistics.

Labor Force Status: Civilian labor force includes employed and unemployed individuals 16 years and older by place of residence.

Employed includes payroll employment, self-employed, unpaid family workers, domestics, agriculture, and labor disputants.

Unemployment rate is calculated by dividing unemployed by civilian labor force.

Nonfarm Payroll Employment: Data are by place of work and cover full- and part-time employees who worked or received pay for the pay period that includes the 12th of the month. The data exclude the self-employed, volunteers, unpaid family workers, and domestics.

"Mining and logging" formerly titled "Natural resources and mining". The definition is the same.

The Portland-Vancouver-Hillsboro metropolitan area includes Clackamas, Columbia, Multnomah, Washington, and Yamhill counties in Oregon, and Clark and Skamania counties in Washington State.

Resident Labor Force and Unemployment for Regions Within the Portland-Vancouver-Hillsboro MSA

	May 2010	April 2010	May 2009	-Change From-	
				April 2010	May 2009
Portland-Vancouver-Hillsboro MSA					
Civilian labor force	1,166,100	1,175,300	1,180,900	-9,200	-14,800
Unemployed	119,300	123,100	127,800	-3,800	-8,500
Unemployment rate	10.2	10.5	10.8	(0.3)	-0.6
Unemployment rate, seasonally adjusted	10.3	10.4	10.9	(0.1)	-0.6
Employed	1,046,800	1,052,200	1,053,200	-5,400	-6,400
Oregon portion of the MSA					
Civilian Labor Force	946,800	950,200	959,200	-3,400	-12,400
Unemployed	91,800	92,500	100,500	-700	-8,700
Unemployment rate (not seasonally adjusted)	9.7	9.7	10.5	0.0	-0.8
Total Employed	855,000	857,700	858,600	-2,700	-3,600
Clackamas County					
Civilian Labor Force	200,100	201,000	202,200	-900	-2,100
Unemployed	19,900	20,200	21,200	-300	-1,300
Unemployment rate	10.0	10.1	10.5	(0.1)	-0.5
Unemployment rate, seasonally adjusted	10.1	10.0	10.6	0.1	-0.5
Total Employed	180,200	180,800	181,000	-600	-800
Columbia County					
Civilian Labor Force	24,320	24,590	24,950	-270	-630
Unemployed	2,860	3,060	3,390	-200	-530
Unemployment rate	11.7	12.4	13.6	(0.7)	-1.9
Unemployment rate, seasonally adjusted	12.0	12.5	14.0	(0.5)	-2.0
Total Employed	21,460	21,530	21,550	-70	-90
Multnomah County					
Civilian Labor Force	387,400	388,400	392,600	-1,000	-5,200
Unemployed	38,500	38,400	42,200	100	-3,700
Unemployment rate	9.9	9.9	10.7	0.0	-0.8
Unemployment rate, seasonally adjusted	9.8	9.8	10.7	0.0	-0.9
Total Employed	349,000	350,100	350,500	-1,100	-1,500
Washington County					
Civilian Labor Force	287,100	288,100	290,800	-1,000	-3,700
Unemployed	25,500	25,700	28,100	-200	-2,600
Unemployment rate	8.9	8.9	9.7	0.0	-0.8
Unemployment rate, seasonally adjusted	9.0	8.8	9.9	0.2	-0.9
Total Employed	261,600	262,400	262,700	-800	-1,100
Yamhill County					
Civilian Labor Force	47,800	48,090	48,600	-290	-800
Unemployed	5,040	5,200	5,660	-160	-620
Unemployment rate	10.5	10.8	11.6	(0.3)	-1.1
Unemployment rate, seasonally adjusted	11.0	10.7	12.2	0.3	-1.2
Total Employed	42,760	42,890	42,940	-130	-180
Washington portion of the MSA (Clark and Skamania counties)					
Civilian Labor Force	219,400	225,000	221,800	-5,600	-2,400
Unemployed	27,500	30,600	27,200	-3,100	300
Percent of Labor Force	12.5	13.6	12.3	(1.1)	0.2
Total Employed	191,900	194,500	194,500	-2,600	-2,600

Components may not sum exactly to totals due to rounding.

Estimates of labor force and unemployment for MSA components are based in part on the most recent population estimates and Unemployment Insurance claims data.