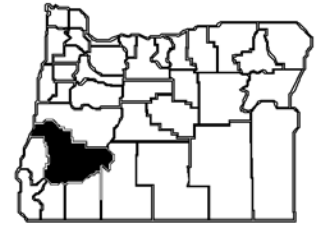




Douglas County LABOR TRENDS



Brian Rooney, Regional Economist ■ (541) 686-7703 ■ Brian.T.Rooney@state.or.us ■ www.QualityInfo.org

December 2011

Economic Indicators

Unemployment Rates

	Raw	Seasonally Adjusted
Douglas		
September 2011	12.1%	13.6%
October 2011	12.0%	13.4%
Oregon		
September 2011	8.8%	9.6%
October 2011	8.9%	9.5%
United States		
September 2011	8.8%	9.1%
October 2011	8.5%	9.0%

Nonfarm Payroll Employment

October 2011

	Douglas
Total	34,080
Goods Producing	5,950
Mining and Log.	970
Wood Prod. Mfg.	2,410
Other Mfg.	1,350
Construction	1,220
Service Producing	19,950
Retail	4,340
Financial Activities	1,390
Leisure and Hosp.	3,180
Additional Serv.	11,040
Government	8,180

Consumer Price Index (CPI)

1982-1984 = 100
All Urban Consumers

United States	
October 2011	226.421
Year change	3.5%
Portland-Salem MSA	
Jan.-June 2011	223.105
Year Change	2.6%

July - Dec. 2011 available mid-Feb. 2012

<http://www.bls.gov/cpi>

Latest Local Area Employment Data

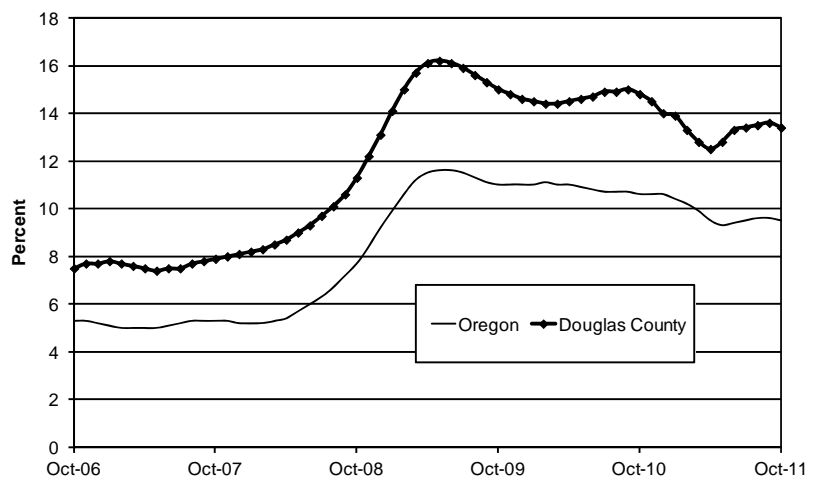
Douglas County's unemployment rate dropped to 13.4 percent in October compared with a revised 13.6 percent in September. The rate this October was 1.4 percentage points lower than the 14.8 percent recorded in October of last year. Douglas County had the fourth highest seasonally adjusted county unemployment rate in the state. The number of unemployed dropped 47 in October and was 765 lower than in October 2010, at 5,519.

Nonfarm Payroll Employment

In October, total nonfarm payroll employment rose 80 when an increase of 200 was expected on a seasonal basis. Total nonfarm employment declined 240, or 0.7 percent, compared with October of last year.

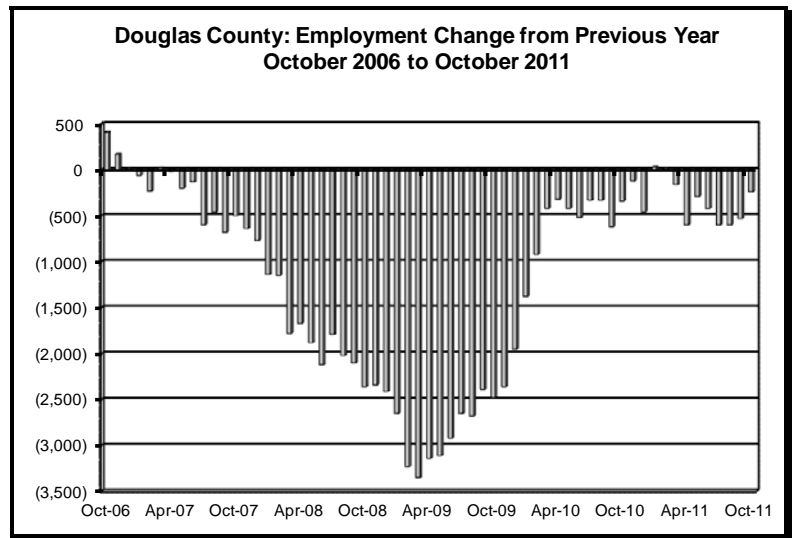
Manufacturing dropped 60 jobs in October from a loss of 60 in wood products and an additional loss of 10 in other durable goods. These losses were countered by a gain of 10 in nondurable goods.

Seasonally Adjusted Unemployment Rates



In the private nonmanufacturing sectors in October, there were seasonal losses in leisure and hospitality (-80) and construction (-40). Elsewhere, there were gains in wholesale trade (+10), retail trade (+50), and transportation, warehousing, and utilities (+10). There were losses in financial activities (-10) and professional and business services (-20).

Government increased by 230 in October due largely to a seasonal gain in local education of 300 from the beginning of a new school year. This gain was countered by losses in federal government (-20), state government (-10), and noneducation local government (-40).



Around the County

Bryan's Roofing Co. opened in **Sutherlin**. It plans to add two to three workers. *The News-Review*, 11/3/2011

Sweet Thang Chocolates opened in **Drain**. It features truffles, chocolates, brittles, jams, and other confections. *The News-Review*, 11/6/2011

Paradise Supply, specializing in indoor gardening equipment, opened in **Roseburg**. It employs three people. *The News-Review*, 11/6/2011

Rachel's Do-It-All Cleaning opened in **Roseburg**. *The News-Review*, 11/6/2011

Riverbend Automotive, an auto repair shop, opened in **Myrtle Creek**. *The News-Review*, 11/13/2011

The Vintage Barn, an antique and jewelry shop, opened in **Oakland**. *The News-Review*, 11/13/2011

The Valley Vitamin Center opened in **Roseburg**. *The News-Review*, 11/20/2011

Douglas County Labor Trends is published by the Workforce and Economic Research Division of the Oregon Employment Department. Douglas County Labor Trends also can be found on the Publications page at www.QualityInfo.org.

Material contained in this publication is in the public domain and may be reproduced without permission. Please credit *Douglas County Labor Trends*, Oregon Employment Department.

Laurie Warner, Director
Graham Slater, Administrator for Workforce and Economic Research
Brian Rooney, Regional Economist
Annette Shelton-Tideman, Workforce Analyst
Roseburg (541) 519-0315
Debbie Fitchett, Field Office Manager
Roseburg (541) 440-3344

Please direct address changes to:
Oregon Employment Department
Workforce and Economic Research
875 Union St NE
Salem OR 97311
Phone (503) 947-1204
TDD (503) 947-1391
e-mail LMIPUBS.emp@state.or.us

The Oregon Employment Department is an equal opportunity employer. Auxiliary aids and services are available upon request to individuals with disabilities.

Angel's Attic, a new and used clothing store, opened in **Sutherlin**. *The News-Review*, 11/20/2011

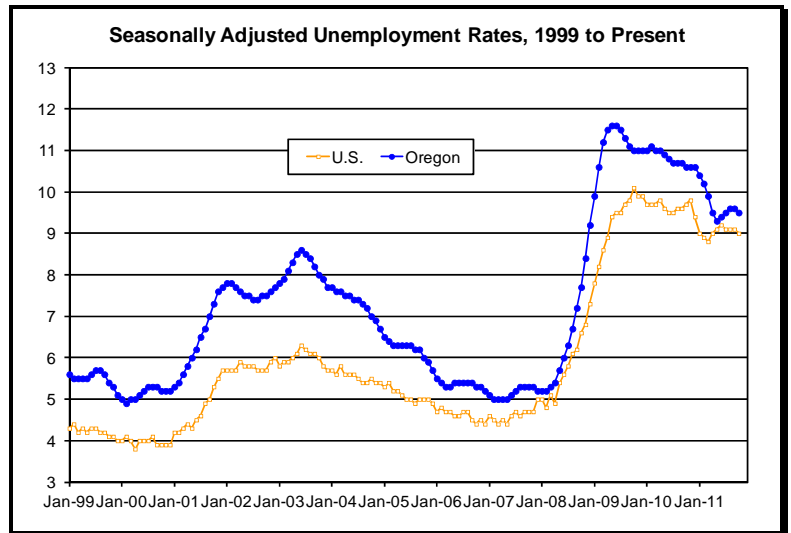
Sherm's Cycle, a family-oriented motorcycle shop, opened in **Reedsport**. *The World*, 11/22/2011

Oregon Employment

Oregon's seasonally adjusted unemployment rate was 9.5 percent in October, essentially unchanged from 9.6 percent in September. The unemployment rate has been below 10 percent for the past seven months, since March, when the rate was 9.9 percent. The recent low point for Oregon's rate was in May, when it reached 9.3 percent.

In October, 177,350 Oregonians were unemployed. This is 20,761 fewer individuals than in October 2010, when 198,111 Oregonians were unemployed.

At 1,626,400, Oregon's seasonally adjusted nonfarm payroll employment has risen for three consecutive months following a loss of 3,300 in July, reflecting the recent trend of modest yet uneven job growth. Employment rose by 800 in October, following a revised gain of 2,700 in September. October job gains were led by professional and business services (+2,300 jobs), government (+1,400), and trade, transportation and utilities (+1,300). These gains were offset by losses in manufacturing (-2,300 jobs), leisure and hospitality (-1,300), and construction (-900).



National Employment

Nonfarm payroll employment continued to trend up in October (+80,000), and the unemployment rate was little changed at 9.0 percent. Employment in the private sector rose. Government employment continued to trend down.

Both the number of unemployed persons (13.9 million) and the unemployment rate (9.0%) changed little over the month. The unemployment rate has remained in a narrow range from 9.0 to 9.2 percent since April.

October's gain of 80,000 jobs was smaller than average monthly gains over the past year. Total nonfarm payroll employment continued to trend up in October (+80,000). Over the past 12 months, payroll employment has increased by an average of 125,000 per month. In October, private-sector employment increased by 104,000, with continued job growth in professional and business services,

DOUGLAS COUNTY LABOR FORCE SUMMARY*
(by place of residence)

	Oct. 2011	Sep. 2011	Oct. 2010	-Change from- Sep. 2011	Oct. 2010
Civilian Labor Force	45,902	46,108	46,320	-206	-418
Unemployment	5,519	5,566	6,284	-47	-765
Unemployment rate	12.0%	12.1%	13.6%	-0.1	-1.6
Unemployment rate, seasonally adjusted	13.4%	13.6%	14.8%	-0.2	-1.4
Total Employment	40,383	40,542	40,036	-159	347

DOUGLAS COUNTY NONFARM PAYROLL EMPLOYMENT
(by place of work)

	Oct. 2011	Sep. 2011	Oct. 2010	-Change from- Sep. 2011	Oct. 2010
TOTAL NONFARM PAYROLL EMPLOYMENT	34,080	34,000	34,320	80	-240
TOTAL PRIVATE	25,900	26,050	25,880	-150	20
Mining and Logging	970	980	910	-10	60
Construction	1,220	1,260	1,230	-40	-10
Manufacturing	3,760	3,820	4,050	-60	-290
Durable Goods	3,410	3,480	3,710	-70	-300
Wood Product Manufacturing	2,410	2,470	2,720	-60	-310
Nondurable Goods	350	340	340	10	10
Trade, Transportation, and Utilities	6,490	6,420	6,360	70	130
Wholesale Trade	570	560	550	10	20
Retail Trade	4,340	4,290	4,230	50	110
Food and Beverage Stores	1,080	1,070	1,050	10	30
General Merchandise Stores	1,140	1,110	1,090	30	50
Transportation, Warehousing, and Utilities	1,580	1,570	1,580	10	0
Information	280	280	300	0	-20
Financial Activities	1,390	1,400	1,370	-10	20
Professional and Business Services	2,900	2,920	2,810	-20	90
Educational and Health Services	4,540	4,540	4,500	0	40
Leisure and Hospitality	3,180	3,260	3,210	-80	-30
Food Services and Drinking Places	2,570	2,590	2,580	-20	-10
Other Services	1,170	1,170	1,140	0	30
Government	8,180	7,950	8,440	230	-260
Federal Government	1,480	1,500	1,480	-20	0
State Government	1,150	1,160	1,170	-10	-20
Local Government	5,550	5,290	5,790	260	-240
Local Government Tribal	1,100	1,100	1,090	0	10
Local Education	2,720	2,420	2,870	300	-150
Local Government, excluding Education and	1,730	1,770	1,830	-40	-100
LABOR-MANAGEMENT DISPUTES	0	0	0	0	0

The most recent month is preliminary, the prior month is revised. Prepared in cooperation with the U.S. Department of Labor, Bureau of Labor Statistics.

Labor Force Status: Civilian labor force includes employed and unemployed individuals 16 years and older by place of residence. Employed includes nonfarm payroll employment, self-employed, unpaid family workers, domestics, agriculture, and labor disputants. Unemployment rate is calculated by dividing unemployed by civilian labor force.

Nonfarm Payroll Employment: Data are by place of work and cover full- and part-time employees who worked or received pay for the pay period that includes the 12th of the month. The data exclude the self-employed, volunteers, unpaid family workers, and domestics.