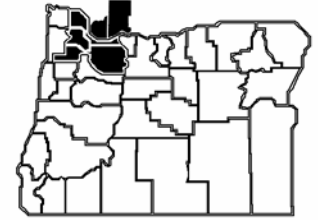




Portland Metro LABOR TRENDS

Clackamas, Columbia, Multnomah, Washington,
Yamhill, Clark (WA) & Skamania (WA) Counties



Amy Vander Vliet, Regional Economist ■ (503) 280-6031 ■ Amy.S.Vandervliet@state.or.us ■ www.QualityInfo.org

August 2008

Economic Indicators

Unemployment Rates

Portland MSA	Seasonally	
	Adjusted	Raw
Jun 2008	5.2%	5.3%
May 2008	5.2%	4.9%
Jun 2007	4.8%	4.9%
Oregon		
Jun 2008	5.5%	5.5%
May 2008	5.6%	5.2%
Jun 2007	5.2%	5.1%
United States		
Jun 2008	5.5%	5.7%
May 2008	5.5%	5.2%
Jun 2007	4.6%	4.7%

Nonfarm Payroll Employment

(not seasonally adjusted)

	June	
	2008	2007
Total	1,044,200	1,039,400
Construction	64,700	65,500
Manufacturing	125,000	126,000
Trade, Trans., & Utilities	204,500	205,600
Information	25,100	24,900
Financial Activities	70,100	72,100
Professional & Bus. Svc.	136,800	136,600
Educ. & Health Services	128,800	125,000
Leisure & Hospitality	100,900	98,600
Government	149,500	146,500
High Tech *	50,200	50,800

Consumer Price Index (CPI)

United States	Jun '08	2007
Yearly Change	5.0%	2.8%

Next release: August 14, 2008

Portland-Salem	2nd Half '07	2007
Yearly Change	3.9%	3.7%

Next release: August 14, 2008
www.bls.gov/cpi

University of Oregon Index of Economic Indicators

Apr 2008	101.0	
May 2008	100.7	

2007 Population

	2006-2007 % Change	
Portland Metro	2,159,720	1.8%
Oregon	3,745,455	1.5%

Employment Trends: Local

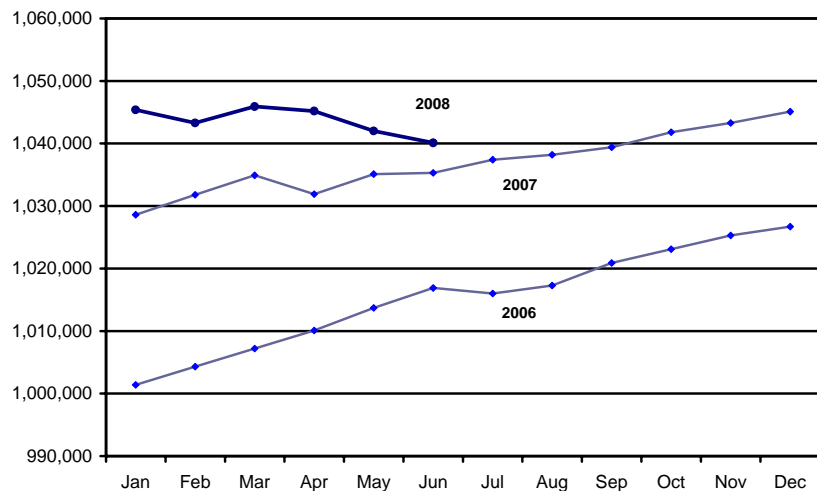
The Portland metropolitan area's seasonally adjusted unemployment rate held steady in June at 5.2 percent. The state and national rates were both 5.5 percent. Approximately 61,700 Portland-area residents were unemployed, up 5,700 over the year.

Seasonally adjusted nonfarm employment declined by 1,900 jobs in June; the third consecutive month of decline. Over the past year, the area added 4,800 jobs for a growth rate of just 0.5 percent. In comparison, the nation is flat over the year and Oregon is up by 0.2 percent, ranking 31st fastest among all 50 states and the District of Columbia.

Most broad sectors added jobs, but at a slower pace than usual for this time of year. Construction bounced back from an anemic May, gaining 1,000 jobs, though it still fell several hundred short of typical growth for June.

Manufacturing gained 200 jobs during a month in which growth historically averages close to 1,000. High tech took a small breather from its downward slide and added jobs for the first time

**Portland Metro Nonfarm Employment
seasonally adjusted**



since last July (+100). Transportation equipment cut 100 jobs, while nondurable goods had a seasonal gain of 200.

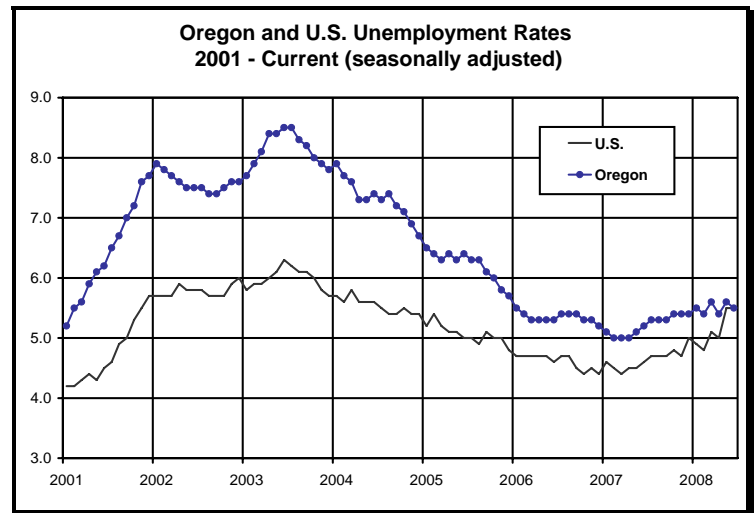
Weakness in retail trade extended into June as employers scaled back their summer hiring. Typically stores add about 1,000 jobs at the start of summer; this year employment was up by just 500.

Professional and business services eked out a gain of just 100 jobs. Normally summer is a busy time for the temp help component, but that sector saw a loss of 300 jobs in June. Services to buildings and dwellings fell a few hundred short of expected growth.

Private educational and health services cut 3,700 jobs as schools continued winding down for the summer break. The health care component was flat over the month. Over the year, educational and health services is up 3.0 percent (+3,800 jobs), making it the area's fastest-growing broad industry.

Employment Trends: State

Oregon's seasonally adjusted unemployment rate was 5.5 percent in June, essentially unchanged from 5.6 percent in May. Since October 2007, Oregon's unemployment rate stayed within a narrow range, between 5.4 percent and 5.6 percent. June marked the first time in more than 12 years that Oregon's seasonally adjusted unemployment rate matched the national rate. In May 1996, both the U.S. and the Oregon rate were 5.6 percent. During the entire period between June 1996 and May 2008, Oregon's rate was higher than the national rate.



In June, total seasonally adjusted payroll employment rose by 1,600, the first monthly gain since February. However, the May figure was revised downward by 2,400 jobs and now shows a loss of

Portland Metro Labor Trends is published by the Workforce and Economic Research Division of the Oregon Employment Department. *Portland Metro Labor Trends* also can be found on the Publications page at www.QualityInfo.org.

Material contained in this publication is in the public domain and may be reproduced without any special permission. Please credit *Portland Metro Labor Trends*, Oregon Employment Department.

Laurie Warner, Director

Graham Slater, Administrator for Workforce and Economic Research

Amy Vander Vliet, Regional Economist
Portland (503) 280-6031

vacant, Workforce Analyst
Beaverton and Hillsboro

Malcolm Boswell, Workforce Analyst
Gresham (503) 666-1985 x309

Lynn Wallis, Workforce Analyst
Oregon City (971) 673-6453

Christian Kaylor, Workforce Analyst
Portland (503) 280-6032

Shawna Sykes, Workforce Analyst
St Helens (503) 397-4995 x232

Pam Ferrara, Workforce Analyst
Yamhill County (503) 378-8386

Bruce Powers, Field Office Manager
Beaverton (503) 644-1229

Robert Brown, Field Office Manager
Gresham (503) 669-7112

Sabrina Van Artsdalen, Field Office Manager
Hillsboro (503) 681-0219

Adalberto Rubio, Field Office Manager
McMinnville (503) 472-5118

Cathie Moravec, Field Office Manager
Oregon City (971) 673-6412

Cynthia Mullen, Field Office Manager
Portland-North (503) 280-6061

Joyce Aho, Field Office Manager
St Helens (503) 397-4995

Please direct address changes to:
Oregon Employment Department
Workforce and Economic Research
875 Union St NE
Salem OR 97311
Phone (503) 947-1204
TDD (503) 947-1391
e-mail lmipubs.emp@state.or.us

The Oregon Employment Department is an equal opportunity employer. Auxiliary aids and services are available upon request to individuals with disabilities.

6,100 jobs in May. Payroll employment stood at 1,734,400 – 7,500 lower than the peak reached in February. This job loss over the most recent four months is equal to 0.4 percent of nonfarm payroll employment and averaged 1,900 per month.

In June, four major industries posted sizeable seasonally adjusted job gains: construction (+1,800 jobs); educational and health services (+800); leisure and hospitality (+1,800); and government (+800). Meanwhile, three major industries cut jobs on a seasonally adjusted basis: manufacturing (-2,000 jobs); financial activities (-1,100); and professional and business services (-1,400).

Manufacturing continued to decline. In June, the industry dropped 2,000 jobs on a seasonally adjusted basis. December 2007 marked a recent high point for the industry, at 204,300 jobs. The comparable June figure was 195,700, a loss of 8,600 jobs or 4.2 percent. Durable goods manufacturing saw most of the job cuts, with three component industries declining since June 2007: wood products (-2,600 jobs); computer and electronic product manufacturing (-2,100); and transportation equipment manufacturing (-1,200). Nondurable goods provided a counterweight, as it gradually rose by more than 3,000 jobs over the past three years.

Construction added 3,600 jobs, which was double the expected seasonal gain of 1,800 for June. All published industries within construction added jobs for the month. However, the gains followed a sharp decline in May, when employment figures were revised to show a seasonally adjusted job decline of 2,400 for May. Construction employment is now down 7,500 jobs or 7.1 percent since June 2007.

Oregon's Ranking

Compared to other states, Oregon's year-over-year employment growth is about average. Preliminary estimates show the state's 0.2 percent employment gain over the past year ranked 31st among all 50 states plus the District of Columbia. Wyoming, Texas, and Montana ranked highest, growing by over 2 percent. Florida (-1.0%), Michigan (-1.1%), and Rhode Island (-2.4%) fared the worst.

Oregon's construction and financial activities industry downturns were among the steepest of all states over the past year. Manufacturing is also weaker in Oregon than in many other states. Helping to buoy Oregon's employment were rapid gains in educational and health services and in leisure and hospitality. Government also added jobs at an above-average pace. For more information, go to www.bls.gov/news.release/laus.t05.htm.

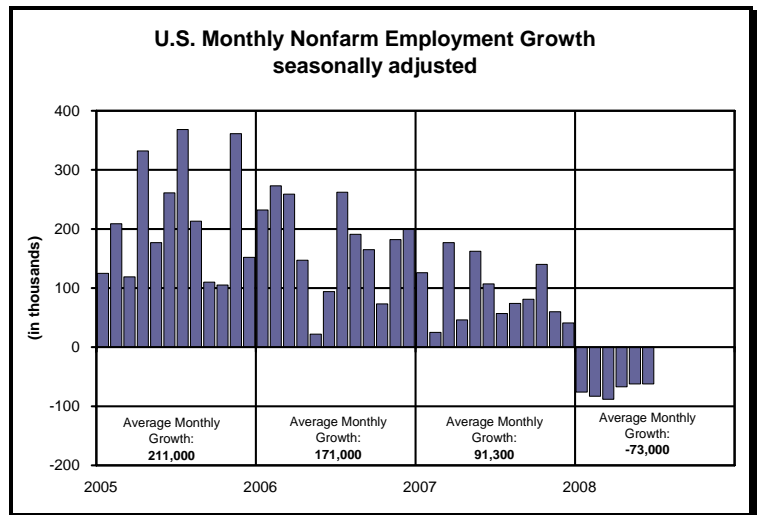
Nonfarm Employment (seasonally adjusted) Over-the-Year Percentage Change June 2008		
Rank	State	% Change
1	Wyoming	2.7
2	Texas	2.4
3	Montana	2.2
4	District of Columbia	1.8
5	Louisiana	1.7
....		
9	Washington	1.2
....		
31	Oregon	0.2
....		
49	Florida	-1
50	Michigan	-1.1
51	Rhode Island	-2.4

Employment Trends: National

The number of unemployed persons was essentially unchanged in June, at 8.5 million and the unemployment rate held at 5.5 percent. One year earlier, the number of unemployed persons was 7.0 million, and the jobless rate was 4.6 percent.

Total nonfarm payroll employment continued to trend down in June (-62,000). Since peaking in December 2007, payroll employment has fallen by 438,000. In June, job losses continued in construction, manufacturing, and employment services. Health care and mining added jobs over the month.

Employment in construction fell by 43,000 in June, as job losses continued across the industry. Since its peak in September 2006, construction employment has fallen by 528,000.



In June, manufacturing employment fell by 33,000. Job losses were wide spread throughout the industry, with notable declines in fabricated metal products (-9,000), printing and related support activities (-6,000), and wood products (-6,000). Employment in motor vehicles and parts edged up by 6,000 over the month, largely reflecting the return of workers from strikes and related shutdowns. Over the past 12 months, manufacturing lost 353,000 jobs.

Within professional and business services, employment services lost 59,000 jobs in June; about half of the decrease (-30,000) occurred in temporary help services. So far this year, monthly job losses in temporary help services averaged 26,000 compared with average declines of 7,000 per month in 2007.

Retail trade employment changed little in June. A job gain in general merchandise stores (9,000) was offset by small declines elsewhere in the sector. Since its most recent peak in March 2007, retail trade shed 194,000 jobs.

Employment in mining rose by 8,000 in June. Support activities for mining and oil and gas extraction accounted for most of the increase. Mining employment expanded by 208,000, or 42 percent, since its most recent low in April 2003.

Health care employment continued to grow in June (15,000), although the increase was half the size of the average monthly gain during the prior 12 months. In June, employment rose in ambulatory health care services (13,000). Since June 2007, health care added 348,000 jobs.

In June, food services employment continued to trend upward (16,000), although job gains in this industry have slowed recently. The industry added an average of 13,000 jobs per month from November 2007 through June 2008; this compares with an average increase of 27,000 jobs per month for the first 10 months of 2007.

Government employment continued to trend up in June and has grown by 257,000 over the past 12 months. Local government accounted for about two-thirds of the growth since June 2007.

Around the Region

A listing of employment-related events making recent news

- **Eye Health NW** will open a clinic at the **Happy Valley Town Center** in November. *Portland Business Journal, 6-9-08*
- **Retail Success Services LLC**, which distributes animal supplies, will open at **Clackamas Commons** in **Clackamas**. *Portland Business Journal, 6-9-08*
- **The Puppy Playhouse**, a doggy daycare business, will open in **Newberg**. *Portland Business Journal, 6-2-08*
- **Little Green Grocer** will open in **Portland's Pearl District**. *Portland Business Journal, 6-30-08*
- **Family Physicians Group** will close its **Salmon Creek** clinic on August 29 after losing seven primary-care providers there in the past 18 months. Operations will be consolidated with the group's Fisher's Landing clinic in southeast Vancouver. *The Columbian, 6-30-08*
- **South Sea Trading Co.** has opened in **McMinnvillle**. It offers teak and mahogany furniture made in Java by certified sustainable companies. *News-Register, 6-14-08*
- **Premier Sports & Fitness, Vintner's Cellar Custom Winery, West Coast Bank, Wildhaber Jewelers, and Stafford Smiles** dental practice have opened at the **Happy Valley Town Center**. *Clackamas Review, 7-8-08*
- **Providence Health & Services** will open its first **Clark County** clinic in **Vancouver** by the end of the year. It will employ three to four physicians and another nine to 12 support staff. *Portland Business Journal, 7-7-08*
- Plans to reorganize **Cascadia Behavioral Healthcare**, the **Portland** area's largest mental health provider, include a \$15-million budget reduction, cutting 241 full-time positions, and transferring some problematic programs to other organizations. In May, county and state officials made an emergency loan to Cascadia of \$2.5 million to prevent the non-profit from sliding into bankruptcy. Cascadia serves 2,300 mentally ill clients in Multnomah County, offering crisis intervention, treatment, walk-in clinics, housing, counseling, case management, and outreach. *Portland Tribune, 6-17-08*
- **RadiSys Corp.**, an embedded computer maker in **Hillsboro**, will lay off 20 workers by the end of the year. *Portland Business Journal, 6-25-08*
- **Accentuate Hair Design by Crystal and Co.** has opened in **McMinnvillle**. *News-Register, 6-7-08*
- **The Columbian** in **Vancouver** has laid off about 20 people, including newsroom and advertising staff. *Portland Business Journal, 7-10-08*
- **Tan Republic** will open at the **Willamette Marketplace** in **West Linn**. *Portland Business Journal, 6-30-08*

-
- A **McDonalds** restaurant will open this fall in northeast **Vancouver** that will include a Wi-Fi McCafé espresso center. *The Columbian, 7-3-08*
 - **Moyers Family Bookstore** will open at the **Colonial Business Center** in **Clackamas**. *Portland Business Journal, 6-24-08*
 - **Artistic Needles** has opened in **McMinnville**. It offers yarns and threads, lamps, lamp stands, magnifying glasses, books, patterns, and needles. *News-Register, 6-14-08*
 - **Pizza Schmizza** will open at **Westlake Village** in **Lake Oswego**. *Lake Oswego Review, 6-26-08*
 - **Nike** will begin ramping down its **Wilsonville** distribution center later this year, laying off about 150 workers starting September 15 through early 2009. In 2006, it announced that it would close the Wilsonville facility and consolidate footwear distribution at a new facility in Memphis. *The Oregonian, 7-15-08*
 - **Starbucks Corp.** will close three stores in **Portland** and one store each in **Tillamook**, **Beaverton**, and **Hillsboro**. *The Oregonian, 7-17-08*
 - **Legacy Salmon Creek Hospital** in **Vancouver** will undergo a \$12-million expansion that will add 64 beds. Construction of the new floor will start in September and be completed in 10 to 12 months. *Portland Business Journal, 7-2-08*
 - **IHOP** will open a restaurant at the **Cascade Station** in **Portland**. *Portland Business Journal, 7-14-08*
 - **El Pollo Loco**, a California-based Mexican chain, opened its first Oregon location in **Wood Village**. *Portland Business Journal, 7-21-08*
 - **Walgreens** has opened in **Sandy**. It employs about 20 people. *The Sandy Post, 7-2-08*
 - **CHW Guitars** has opened in **McMinnville**. It offers guitar and drum accessories, sheet music, and band instruments. *News-Register, 7-5-08*
 - **Spoil Me Nails & Spa** will open in north **Portland**. *Portland Business Journal, 7-14-08*
 - **Sport Clips** will open at the **Cedar Hills Shops** in **Beaverton**. *Portland Business Journal, 7-14-08*

Portland-Vancouver-Beaverton MSA Labor Force and Industry Employment

	June 2008	May 2008	June 2007	---Change from---	
				May 2008	June 2007
LABOR FORCE STATUS					
Civilian Labor Force	1,156,300	1,151,300	1,141,800	5,000	14,500
Unemployed	61,700	56,600	56,000	5,100	5,700
Unemployment Rate	5.3%	4.9%	4.9%		
Unemployment Rate, seasonally adjusted	5.2%	5.2%	4.8%		
Total Employed	1,094,500	1,094,700	1,085,800	-200	8,700
NONFARM PAYROLL EMPLOYMENT					
Total nonfarm	1,044,200	1,045,000	1,039,400	-800	4,800
Total nonfarm, seasonally adjusted	1,040,100	1,042,000	1,035,300	-1,900	4,800
Total private	894,700	895,200	892,900	-500	1,800
Natural resources and mining	1,700	1,600	1,700	100	0
Construction	64,700	63,700	65,500	1,000	-800
Construction of buildings	14,700	14,500	15,000	200	-300
Residential building construction	7,700	7,600	8,500	100	-800
Nonresidential building construction	7,000	6,900	6,500	100	500
Heavy and civil engineering construction	6,200	6,000	6,500	200	-300
Specialty trade contractors	43,800	43,200	44,000	600	-200
Manufacturing	125,000	124,800	126,000	200	-1,000
Durable goods	94,600	94,600	95,500	0	-900
Wood product manufacturing	4,800	4,900	5,700	-100	-900
Primary metal manufacturing	7,200	7,200	6,600	0	600
Fabricated metal product manufacturing	13,100	13,000	13,200	100	-100
Machinery manufacturing	8,500	8,500	8,600	0	-100
Computer and electronic product manufacturing	35,600	35,500	36,800	100	-1,200
Semiconductor and electronic component mfg.	26,700	26,400	27,300	300	-600
Electronic instrument manufacturing	5,200	5,100	5,600	100	-400
Transportation equipment manufacturing	8,500	8,600	8,900	-100	-400
Nondurable goods	30,400	30,200	30,500	200	-100
Food manufacturing	9,500	9,200	9,100	300	400
Paper manufacturing	4,500	4,600	4,600	-100	-100
Trade, transportation, and utilities	204,500	203,900	205,600	600	-1,100
Wholesale trade	58,100	58,000	58,800	100	-700
Merchant wholesalers, durable goods	27,900	28,000	29,000	-100	-1,100
Merchant wholesalers, nondurable goods	21,500	21,300	21,600	200	-100
Electronic markets and agents and brokers	8,700	8,700	8,200	0	500
Retail trade	109,000	108,500	109,000	500	0
Motor vehicle and parts dealers	13,800	14,000	14,600	-200	-800
Food and beverage stores	20,300	20,200	19,900	100	400
Clothing and clothing accessories stores	11,000	11,000	11,500	0	-500
General merchandise stores	19,800	19,700	19,700	100	100
Transportation, warehousing, and utilities	37,400	37,400	37,800	0	-400
Air transportation	3,900	4,000	4,000	-100	-100
Truck transportation	11,200	11,200	11,300	0	-100
Couriers and messengers	4,800	4,700	4,800	100	0
Warehousing and storage	4,100	4,100	4,200	0	-100
Information	25,100	25,000	24,900	100	200
Publishing industries, except internet	10,500	10,400	10,100	100	400
Software publishers	6,900	6,800	6,600	100	300
Telecommunications	6,500	6,600	6,800	-100	-300

Nonfarm Payroll Employment (continued)

	June 2008	May 2008	June 2007	---Change from---	
				May 2008	June 2007
Financial activities	70,100	69,900	72,100	200	-2,000
Finance and insurance	44,000	43,900	45,200	100	-1,200
Credit intermediation and related activities	20,800	20,900	22,100	-100	-1,300
Insurance carriers and related activities	19,400	19,300	19,200	100	200
Real estate and rental and leasing	26,100	26,000	26,900	100	-800
Real estate	21,400	21,400	22,000	0	-600
Professional and business services	136,800	136,700	136,600	100	200
Professional and technical services	54,300	53,900	52,600	400	1,700
Architectural and engineering services	12,500	12,400	12,200	100	300
Computer systems design and related services	7,700	7,600	7,400	100	300
Management of companies and enterprises	22,700	22,600	21,900	100	800
Administrative and waste services	59,800	60,200	62,100	-400	-2,300
Administrative and support services	56,900	57,200	59,500	-300	-2,600
Employment services	23,800	24,100	26,000	-300	-2,200
Business support services	8,200	8,300	8,100	-100	100
Services to buildings and dwellings	15,200	15,100	15,500	100	-300
Educational and health services	128,800	132,500	125,000	-3,700	3,800
Educational services	19,600	23,300	19,300	-3,700	300
Colleges and universities	8,300	11,700	8,300	-3,400	0
Health care and social assistance	109,200	109,200	105,700	0	3,500
Ambulatory health care services	41,500	41,500	39,900	0	1,600
Hospitals	28,800	28,700	27,800	100	1,000
Nursing and residential care facilities	21,000	21,000	20,700	0	300
Social assistance	17,900	18,000	17,300	-100	600
Leisure and hospitality	100,900	100,100	98,600	800	2,300
Arts, entertainment, and recreation	14,700	14,200	14,300	500	400
Amusement, gambling, and recreation	10,900	10,400	10,800	500	100
Accommodation and food services	86,200	85,900	84,300	300	1,900
Accommodation	9,100	9,000	9,100	100	0
Food services and drinking places	77,100	76,900	75,200	200	1,900
Full-service restaurants	37,300	37,200	36,500	100	800
Limited-service eating places	32,600	32,500	31,800	100	800
Other services	37,100	37,000	36,900	100	200
Membership associations and organizations	16,400	16,300	16,300	100	100
Government	149,500	149,800	146,500	-300	3,000
Federal government	17,900	17,900	18,000	0	-100
State government	21,700	21,700	21,600	0	100
State education	8,100	8,200	7,700	-100	400
Local government	109,900	110,200	106,900	-300	3,000
Local education	61,800	62,500	60,600	-700	1,200
Labor Disputes	0	0	900	0	-900

The most recent month is preliminary, the prior month is revised. Prepared in cooperation with the U.S. Department of Labor, Bureau of Labor Statistics.

Labor Force Status: Civilian labor force includes employed and unemployed individuals 16 years and older by place of residence. Employed includes nonfarm payroll employment, self-employed, unpaid family workers, domestics, agriculture, and labor disputants. Unemployment rate is calculated by dividing unemployed by civilian labor force.

Nonfarm Payroll Employment: Data are by place of work and cover full- and part-time employees who worked or received pay for the pay period that includes the 12th of the month.

The data exclude the self-employed, volunteers, unpaid family workers, and domestics. "Natural resources" includes only Logging (NAICS 1133).

The Portland-Vancouver-Beaverton metropolitan area includes Clackamas, Columbia, Multnomah, Washington, and Yamhill counties in Oregon, and Clark and Skamania counties in Washington State.

Resident Labor Force and Unemployment for Regions Within the Portland-Vancouver-Beaverton MSA

	-Change From-				
	June 2008	May 2008	June 2007	May 2008	June 2007
Portland-Vancouver-Beaverton MSA					
Civilian labor force	1,156,300	1,151,300	1,141,800	5,000	14,500
Unemployed	61,700	56,600	56,000	5,100	5,700
Unemployment rate	5.3	4.9	4.9	0.4	0.4
Unemployment rate, seasonally adjusted	5.2	5.2	4.8	0.0	0.4
Employed	1,094,500	1,094,700	1,085,800	-200	8,700
Oregon portion of the MSA					
Civilian Labor Force	940,900	935,800	930,100	5,100	10,800
Unemployed	47,000	43,300	44,500	3,700	2,500
Percent of Labor Force	5.0	4.6	4.8	0.4	0.2
Total Employed	893,900	892,500	885,600	1,400	8,300
Clackamas County					
Civilian Labor Force	201,400	200,300	199,000	1,100	2,400
Unemployed	9,800	9,000	9,200	800	600
Percent of Labor Force	4.9	4.5	4.6	0.4	0.3
Total Employed	191,600	191,300	189,800	300	1,800
Columbia County					
Civilian Labor Force	24,530	24,400	24,220	130	310
Unemployed	1,440	1,350	1,340	90	100
Percent of Labor Force	5.9	5.5	5.5	0.4	0.4
Total Employed	23,090	23,050	22,880	40	210
Multnomah County					
Civilian Labor Force	379,600	377,500	375,600	2,100	4,000
Unemployed	19,800	18,300	19,100	1,500	700
Percent of Labor Force	5.2	4.8	5.1	0.4	0.1
Total Employed	359,800	359,300	356,500	500	3,300
Washington County					
Civilian Labor Force	288,200	286,700	284,900	1,500	3,300
Unemployed	13,300	12,300	12,600	1,000	700
Percent of Labor Force	4.6	4.3	4.4	0.3	0.2
Total Employed	274,800	274,400	272,300	400	2,500
Yamhill County					
Civilian Labor Force	47,140	46,920	46,410	220	730
Unemployed	2,560	2,400	2,240	160	320
Percent of Labor Force	5.4	5.1	4.8	0.3	0.6
Total Employed	44,580	44,520	44,170	60	410
Washington portion of the MSA (Clark and Skamania counties)					
Civilian Labor Force	215,400	215,500	211,700	-100	3,700
Unemployed	14,800	13,300	11,500	1,500	3,300
Percent of Labor Force	6.9	6.2	5.4	0.7	1.5
Total Employed	200,600	202,200	200,200	-1,600	400

Components may not sum exactly to totals due to rounding.

Estimates of labor force and unemployment for MSA components are based in part on the most recent population estimates and Unemployment Insurance claims data.



Labor Force and Unemployment by Area (1)

	June 2008			May 2008			June 2007					
	Civilian Labor Force	Employed	Unemployed	Unemployment Rate	Civilian Labor Force	Employed	Unemployed	Unemployment Rate	Civilian Labor Force	Employed	Unemployed	Unemployment Rate
United States	155,582,000	146,649,000	8,933,000	5.7	154,003,000	145,327,000	8,076,000	5.2	154,252,000	146,958,000	7,295,000	4.7
U.S. Seasonally Adjusted	1,955,948	1,848,859	107,089	5.5	1,937,069	1,835,699	101,370	5.2	1,939,493	1,840,404	99,089	4.6
Slate of Oregon				5.5				5.2				5.1
Oregon Seasonally Adjusted				5.5				5.6				5.2
Metropolitan Statistical Areas:												
Bend (Deschutes County)	85,935	80,653	5,282	6.1	84,976	79,833	5,143	6.1	83,243	79,492	3,751	4.5
Corvallis (Benton County)	42,978	41,394	1,644	3.8	42,858	41,381	1,477	3.4	42,768	41,035	1,733	4.1
Eugene-Springfield (Lane County)	182,824	172,577	9,947	5.4	182,517	173,046	9,471	5.2	181,660	172,420	9,240	5.1
Medford (Jackson County)	103,670	96,705	6,965	6.7	102,907	96,122	6,785	6.6	101,932	96,185	5,747	5.6
Portland-Vancouver-Beaverton (2)	1,156,276	1,084,530	61,746	5.3	1,151,287	1,084,725	66,562	4.9	1,141,870	1,085,827	56,043	4.9
Salem (Marion and Polk counties)	194,479	183,789	10,690	5.5	191,118	181,080	10,028	5.2	193,763	183,534	10,229	5.3
Counties:												
Baker	7,605	7,212	393	5.2	7,453	7,065	388	5.2	7,518	7,114	404	5.4
Benton	42,978	41,394	1,644	3.8	42,858	41,381	1,477	3.4	42,768	41,035	1,733	4.1
Clackamas	201,415	191,574	9,841	4.9	200,275	191,283	8,992	4.5	199,053	189,806	9,247	4.6
Clatsop (3)	20,310	19,437	873	4.3	19,999	19,191	808	4.0	20,189	19,322	867	4.3
Columbia	24,525	23,088	1,437	5.9	24,398	23,053	1,345	5.5	24,219	22,875	1,344	5.5
Coos (3)	28,745	26,837	1,908	6.6	28,690	26,862	1,828	6.4	28,635	26,854	1,781	6.2
Cook (3)	9,210	9,075	135	1.5	9,087	8,927	160	1.8	9,073	8,936	137	1.5
Curry (3)	9,467	8,874	593	6.3	9,373	8,787	586	6.3	9,705	9,089	616	6.3
Deschutes	85,935	80,653	5,282	6.1	84,976	79,833	5,143	6.1	83,243	79,492	3,751	4.5
Douglas (3)	48,158	44,318	3,840	8.0	47,980	44,130	3,850	8.0	47,701	44,258	3,443	7.2
Gilliam	1,080	1,032	48	4.4	1,048	1,000	48	4.6	1,109	1,056	53	4.8
Grant	3,519	3,241	278	7.9	3,418	3,030	388	11.4	3,505	3,274	231	6.6
Harney	3,413	3,163	250	7.3	3,341	3,096	245	7.3	3,490	3,246	244	7.0
Hood River (3)	12,869	12,262	607	4.7	12,164	11,551	613	5.0	12,728	12,087	641	5.0
Jackson	103,670	96,705	6,965	6.7	102,907	96,122	6,785	6.6	101,932	96,185	5,747	5.6
Josephine (3)	35,489	32,892	2,597	7.3	35,290	32,770	2,520	7.1	35,515	33,074	2,441	6.9
Klamath (3)	30,991	28,788	2,203	7.1	30,971	28,780	2,191	7.1	31,146	29,162	1,984	6.4
Lake	3,751	3,503	248	6.6	3,675	3,416	259	7.0	3,881	3,606	275	6.6
Lane	182,624	172,677	9,947	5.4	182,517	173,046	9,471	5.2	181,660	172,420	9,240	5.1
Lincoln	22,658	21,488	1,170	5.2	22,380	21,238	1,142	5.1	22,830	21,655	1,175	5.1
Linn (3)	54,235	50,633	3,602	6.6	53,833	50,448	3,385	6.3	54,244	50,793	3,451	6.4
Malheur (3)	13,111	12,257	854	6.5	12,973	12,120	853	6.6	13,095	12,300	795	6.0
Marion	155,972	147,243	8,729	5.6	153,375	145,081	8,294	5.4	155,278	147,039	8,239	5.3
Morrow (3)	5,814	5,525	289	5.0	5,641	5,368	273	4.8	5,815	5,543	272	4.7
Multnomah	379,638	359,799	19,839	5.2	377,522	359,252	18,270	4.8	375,580	356,478	19,102	5.1
Polk	38,507	36,546	1,961	5.1	37,743	36,009	1,734	4.6	38,485	36,495	1,990	5.2
Sherman	1,001	955	46	4.6	958	913	45	4.7	1,005	957	48	4.8
Tillamook	12,467	11,924	543	4.4	12,357	11,797	560	4.5	12,664	12,070	594	4.7
Umatilla (3)	37,751	35,807	1,944	5.1	36,740	34,794	1,946	5.3	37,861	35,930	1,931	5.2
Union (3)	12,273	11,561	682	5.6	12,218	11,473	745	6.1	12,422	11,837	585	4.7
Wallowa	3,788	3,584	204	5.4	3,630	3,380	250	6.9	3,818	3,645	173	4.5
Wasco (3)	16,462	15,732	730	4.4	12,528	11,921	607	4.8	16,915	16,250	665	3.9
Washington	288,160	274,847	13,313	4.6	286,713	274,429	12,284	4.3	284,877	272,310	12,567	4.4
Wheeler	626	601	25	4.0	617	591	26	4.2	649	618	31	4.8
Yamhill	47,141	44,584	2,557	5.4	46,920	44,517	2,403	5.1	46,413	44,173	2,240	4.8

(1) Civilian labor force includes employed and unemployed individuals 16 years and older by place of residence. Employed includes nonfarm payroll employment, self-employed, unpaid family workers, domestics, agriculture, and labor disputants. Unemployment rate is calculated by dividing unemployed by civilian labor force. Data are not seasonally adjusted unless otherwise noted.
 (2) Portland-Vancouver-Beaverton MSA includes Clackamas, Columbia, Multnomah, Washington, and Yamhill counties in Oregon.
 (3) This county is in a micropolitan statistical area. Malheur County is part of the Ontario micropolitan statistical area, which also includes Payette County, Idaho. Morrow and Umatilla counties combine to form the Pendleton-Hermiston micropolitan statistical area. All of Oregon's other micropolitan statistical areas stand alone as single counties.

Next release: August 18, 2008

Contact: Kathi Riddell, (503) 947-1286
 Kathi.F.Riddell@state.or.us