



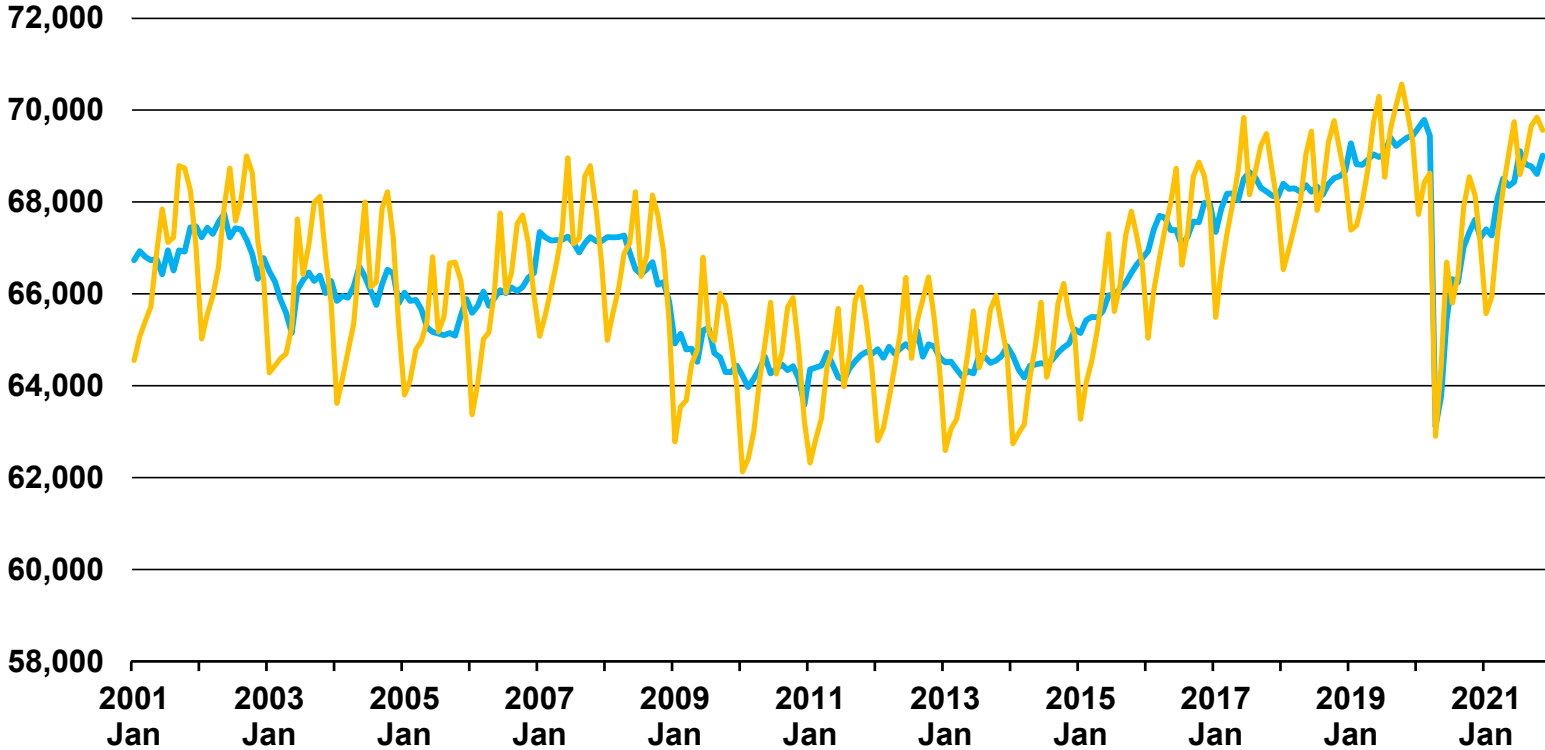
Eastern Oregon Economy at a Glance

By Chris Rich - Eastern Oregon Regional Economist

January 18, 2022



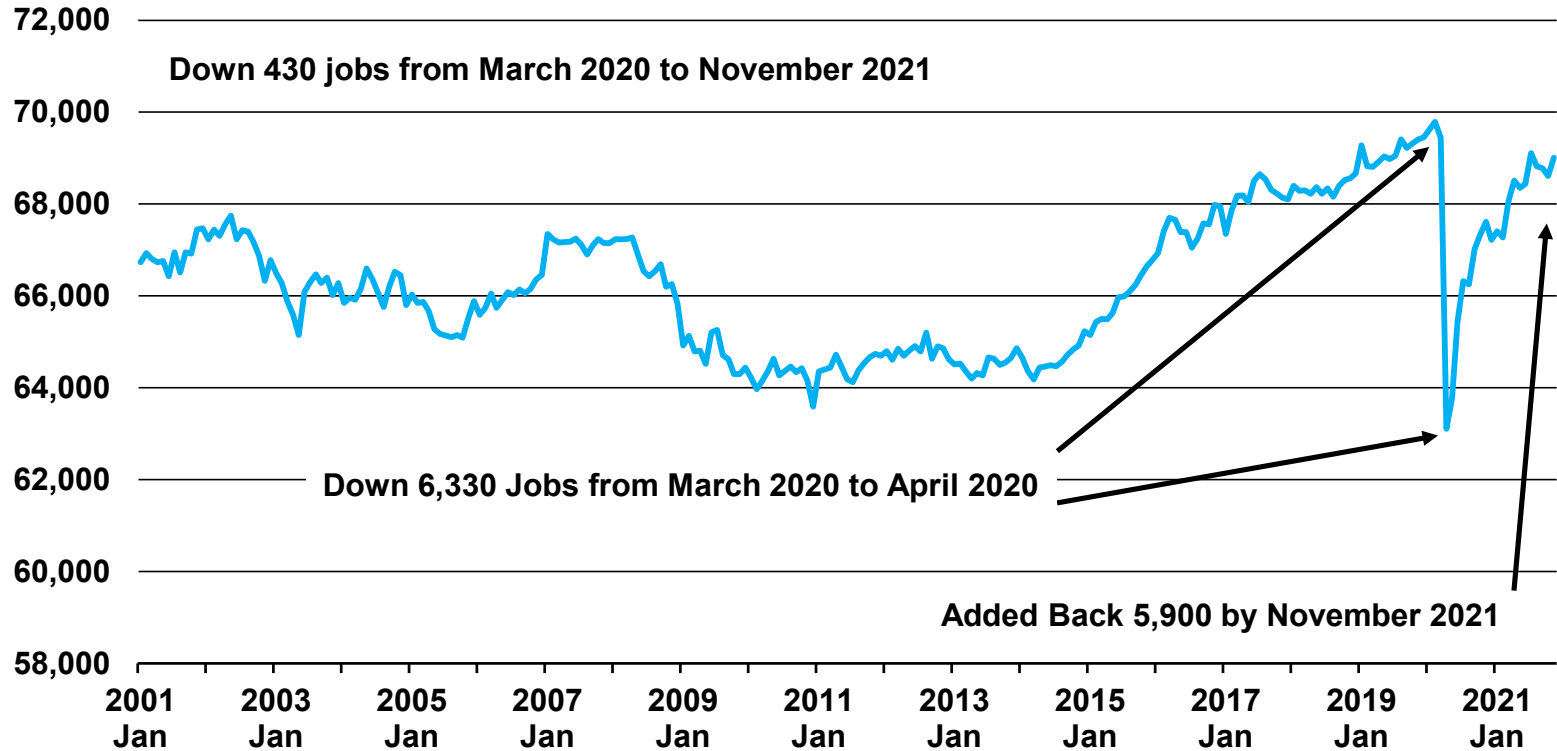
Eastern Oregon - Total Nonfarm Employment (2001 to November 2021)



Source: Oregon Employment Department



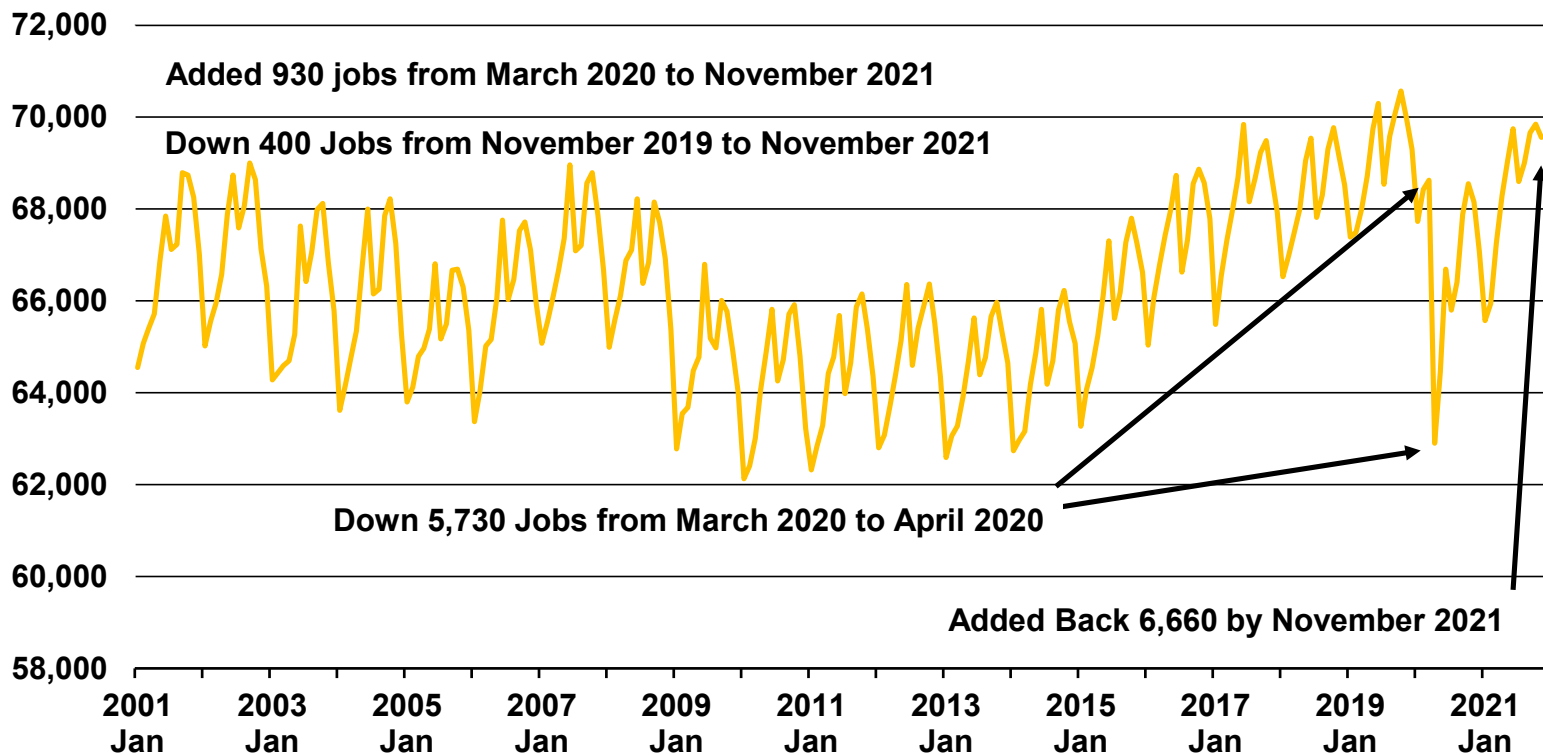
Eastern Oregon - Seasonally Adjusted Total Nonfarm Employment (2001 to November 2021)



Source: Oregon Employment Department



Eastern Oregon - Non Seasonally Adjusted Total Nonfarm Employment (2001 to November 2021)



Source: Oregon Employment Department



Eastern Oregon Employment Gains and Losses

	Nov. 2021	Change from Nov. 2019
Total Nonfarm Employment	69,560	-400
Total Private	51,560	180
Goods Producing	11,190	-520
Wholesale and Retail Trade	11,410	560
Transportation, Warehousing and Utilities	4,180	0
Information*	990	140
Financial Activities	1,910	-60
Professional and Business Services	3,260	90
Education and Health Services	9,800	-150
Leisure and Hospitality	6,240	-180
Other Services*	1,880	30
Government	18,000	-580
Federal Government	1,630	0
State Government	3,710	90
Local Government	12,660	-670

*Note: * Excludes Morrow due to confidentiality*

Source: Oregon Employment Department



Eastern Oregon Total Nonfarm Employment

	Nov. 2021	Change from Nov. 2019
Eastern Oregon	69,560	-400
Baker	5,650	60
Grant	2,320	-130
Harney	2,390	0
Malheur	11,970	-380
Morrow	5,150	120
Umatilla	28,850	-10
Union	10,570	-200
Wallowa	2,660	140

Source: Oregon Employment Department

Eastern Oregon Total Private Employment

	Nov. 2021	Change from Nov. 2019
Eastern Oregon	51,560	180
Baker	4,450	50
Grant	1,380	-10
Harney	1,370	30
Malheur	8,670	-220
Morrow	4,100	110
Umatilla	21,550	260
Union	8,110	-130
Wallowa	1,930	90

Source: Oregon Employment Department



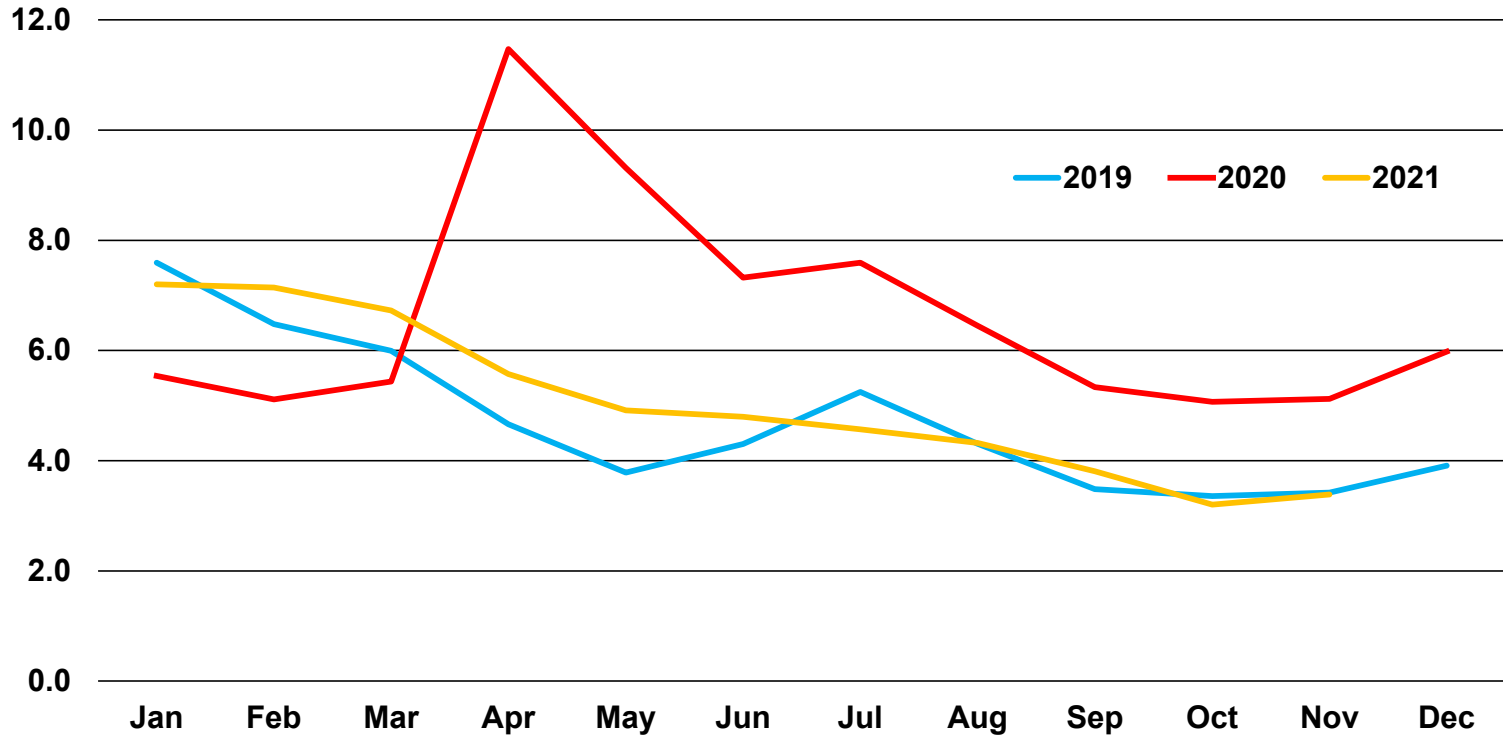
- Baker - Small gains in most industries with leisure and hospitality still down 80
- Harney - Small gains and losses in most industries
- Morrow - Down 140 in manufacturing, down 90 in transportation, warehousing, and utilities, but up 120 overall
- Umatilla - Down 270 in manufacturing, down 140 in leisure and hospitality, down 110 in local government, up 320 in retail trade, up 220 in transportation, warehousing, and utilities, up 150 in information
- Wallowa - Small gains in most industries with local government up 50, with seasonal hiring shifts that likely distort overall gain



- Grant - Small gains and losses in most private sector industries with local government down 100
- Malheur - Up 220 in retail trade, up 80 in state government, down 100 in manufacturing, down 240 in local government, small losses in other industries likely due to seasonal hiring shifts
- Union - Up 70 in construction, down 80 in transportation, warehousing, and utilities, down 90 in education and health services, down 100 in local government



Unemployment Rate on Par with Prepandemic Rate

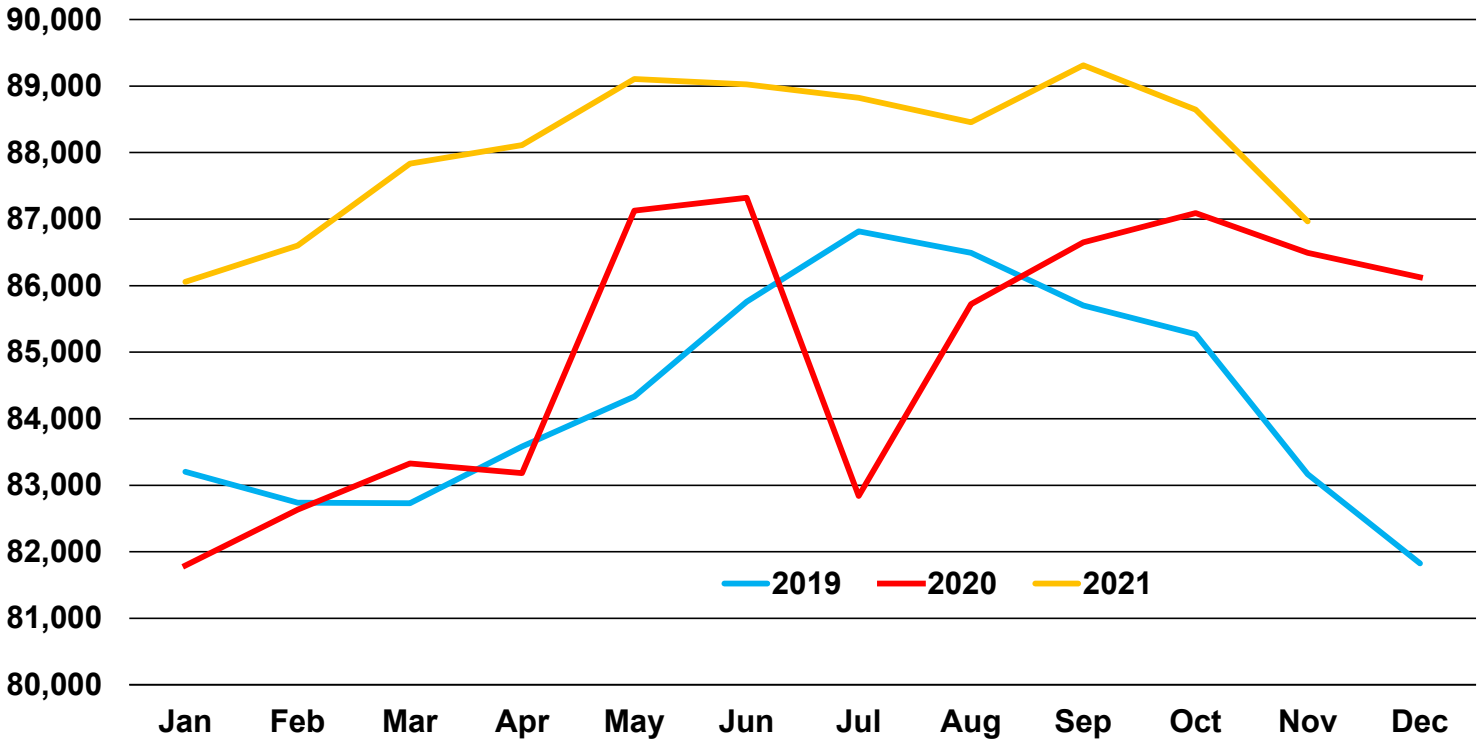


Eastern Oregon Monthly Unemployment Rate by Year

Source: Oregon Employment Department



Labor Force Above Prepandemic Level

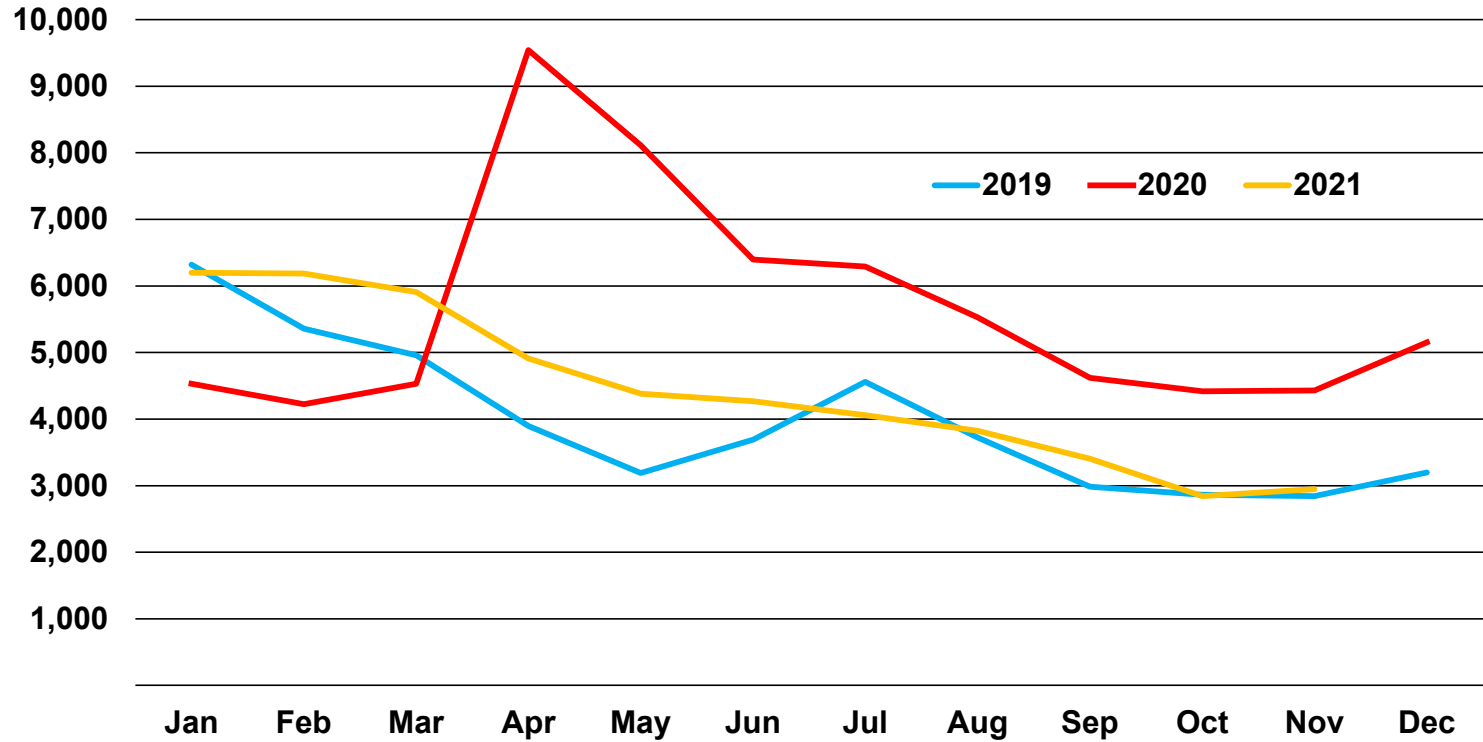


Eastern Oregon Monthly Labor Force by Year

Source: Oregon Employment Department



Unemployed on Par with Prepandemic Level

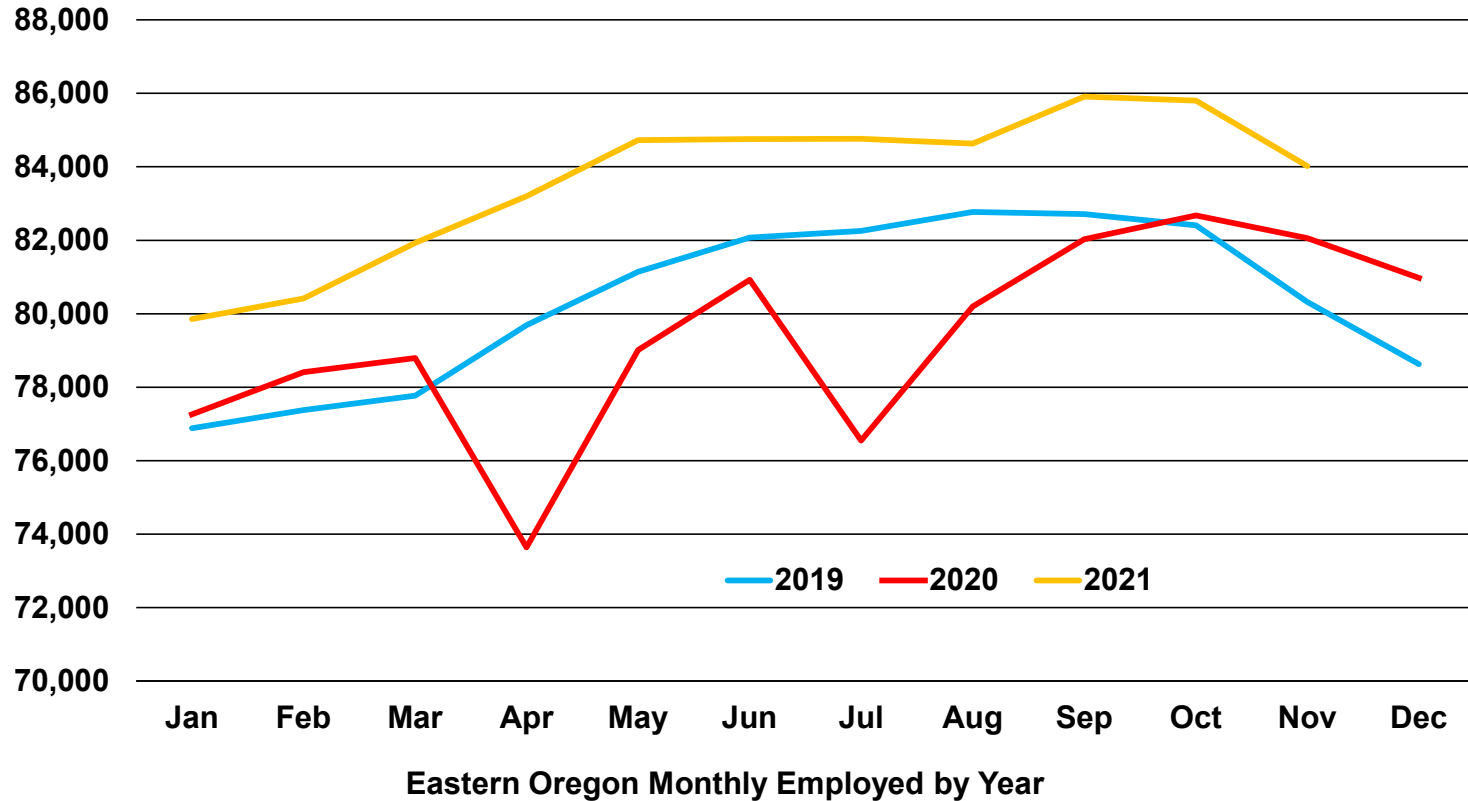


Eastern Oregon Monthly Unemployed by Year

Source: Oregon Employment Department



Employed on Par with Prepandemic Level



Source: Oregon Employment Department



Eastern Oregon Unemployment Rate and Unemployed

	U-Rate		Unemployed	
	Nov. 2021	Nov. 2019	Nov. 2021	Nov. 2019
Eastern Oregon	3.4	3.4	2,946	2,843
Baker	3.4	3.7	258	263
Grant	4.5	5.1	142	161
Harney	3.7	3.2	140	113
Malheur	2.7	2.8	343	351
Morrow	3.1	3.1	178	175
Umatilla	3.5	3.4	1,318	1,243
Union	3.4	3.4	425	403
Wallowa	3.9	4.1	142	134

Source: Oregon Employment Department



For More Information

Chris Rich, Eastern Oregon Regional Economist

Christopher.M.Rich@OED.Oregon.gov

(541) 519-0315

www.Qualityinfo.org

Get the latest workforce and economic research delivered to your inbox!

Sign up at <https://www.qualityinfo.org/p-sofrm/>

Join the conversation:

OregonEmployment.Blogspot.com

Twitter: [@OED Research](https://twitter.com/OED_Research)

