



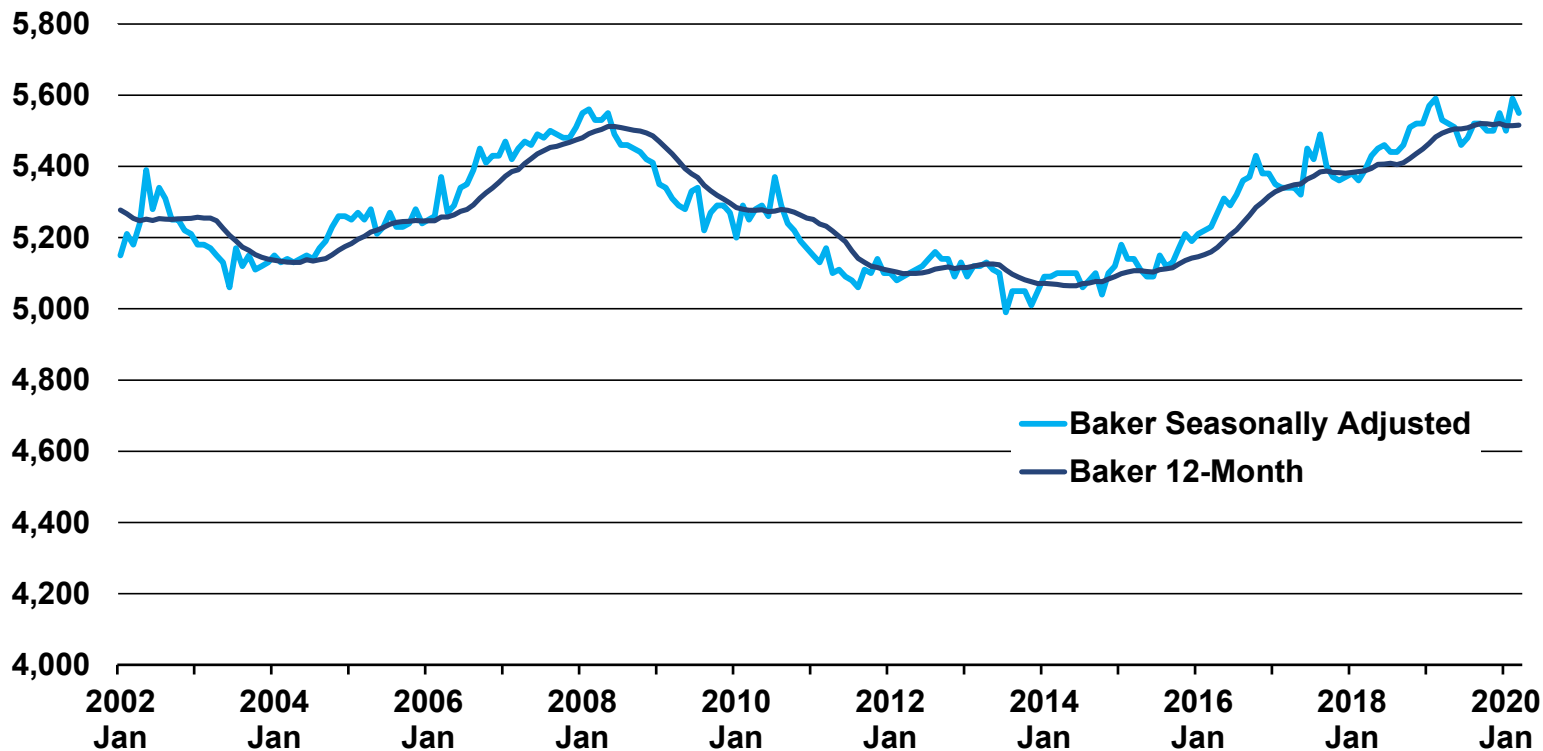
# COVID-19: Employment Loss and Unrealized Seasonal Gains - Baker

By Chris Rich - Eastern Oregon Regional Economist

November 9, 2020



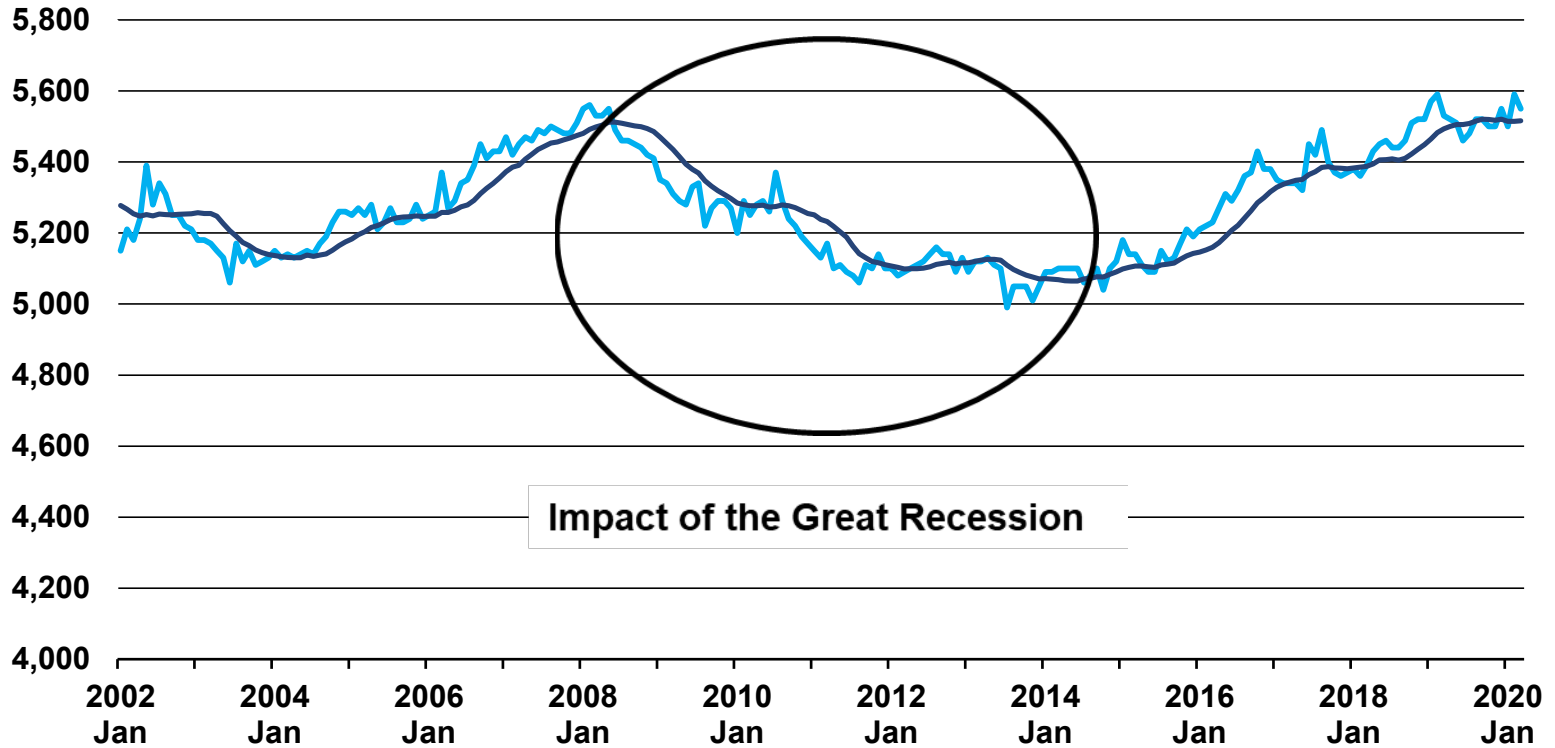
## Baker County - Seasonally Adjusted and 12-Month Average Total Nonfarm Employment (2002 to March 2020)



Source: Oregon Employment Department



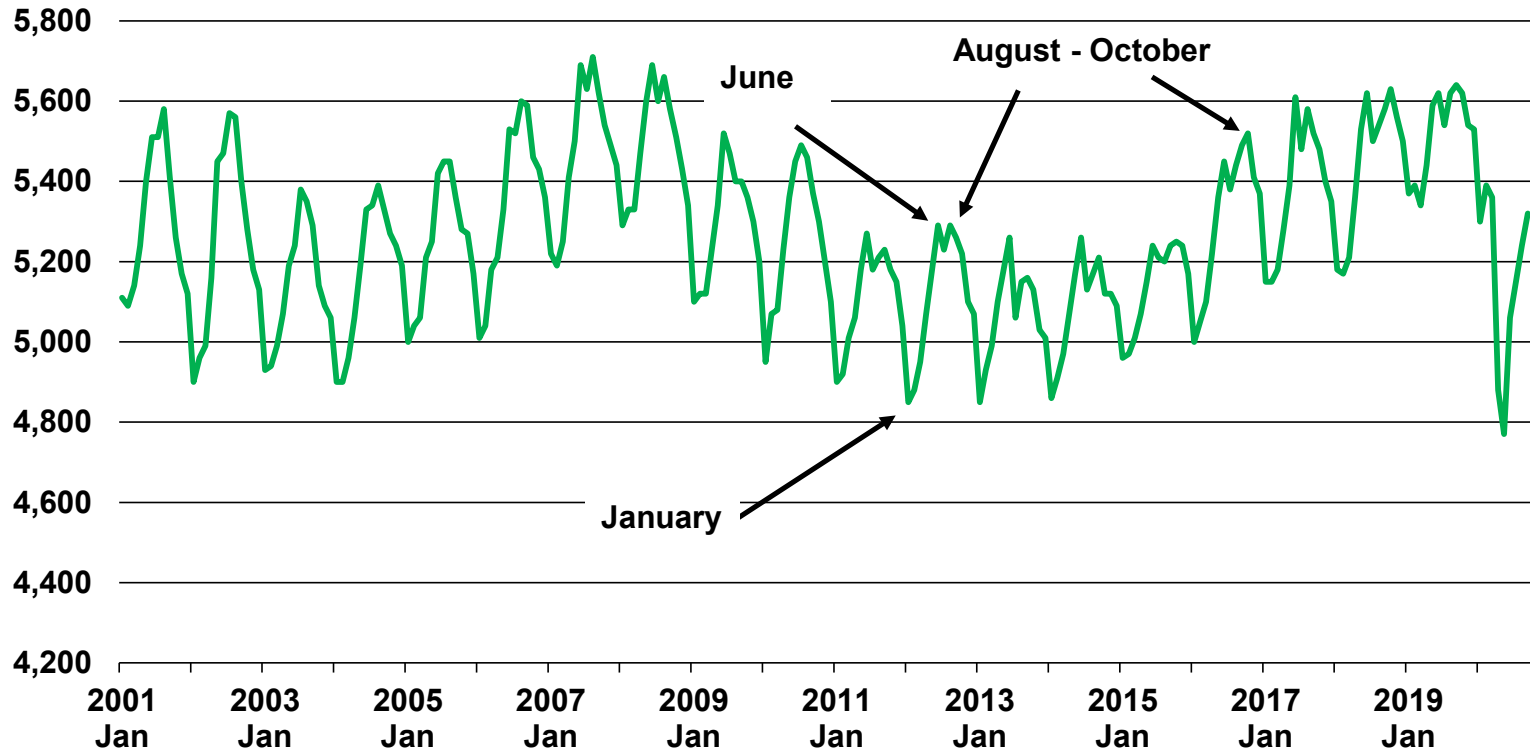
## Baker County - Seasonally Adjusted and 12-Month Average Total Nonfarm Employment (2002 to March 2020)



Source: Oregon Employment Department



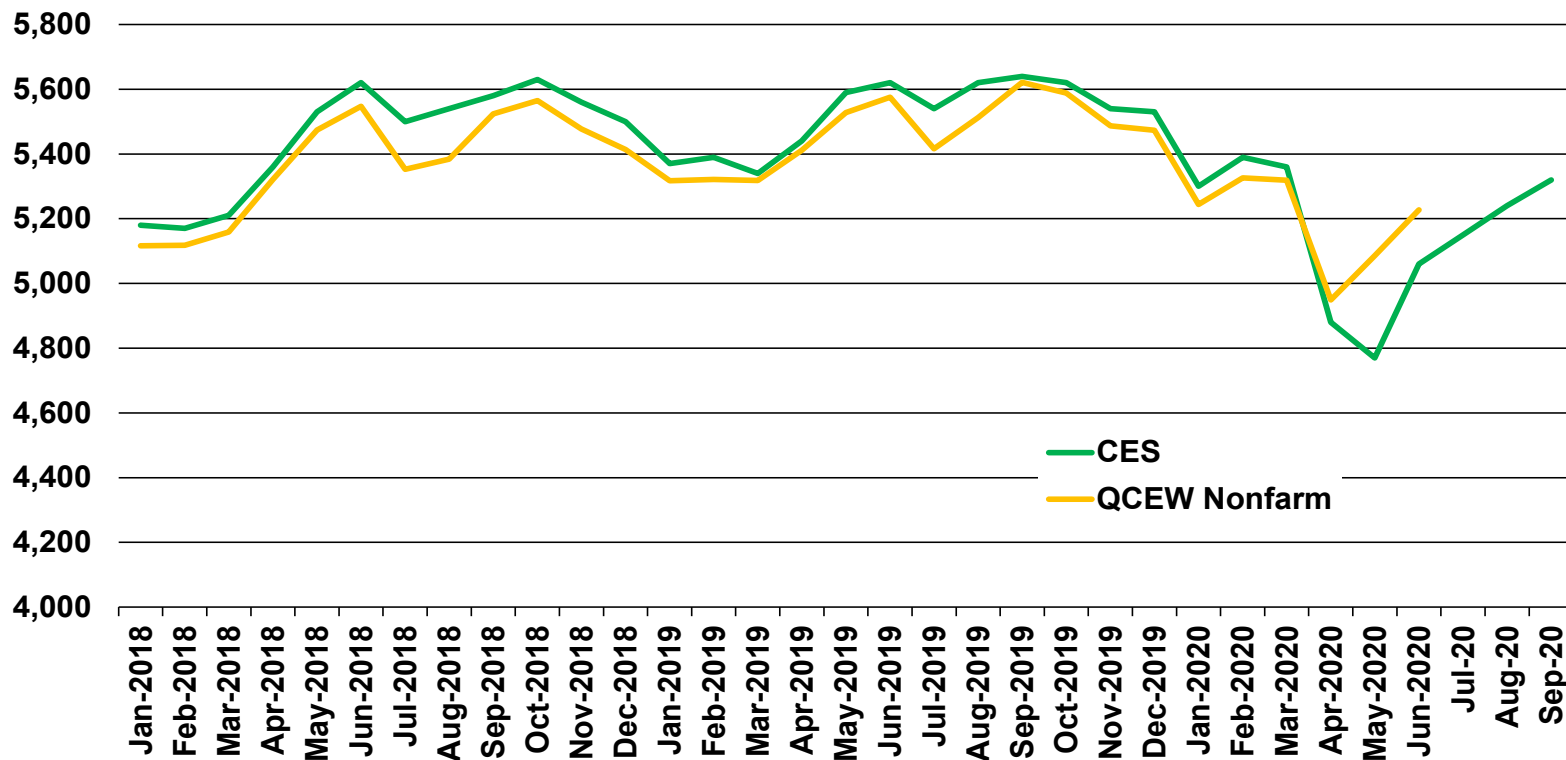
## Baker County - Total Nonfarm Employment Not Seasonally Adjusted (2001 to September 2020)



Source: Oregon Employment Department



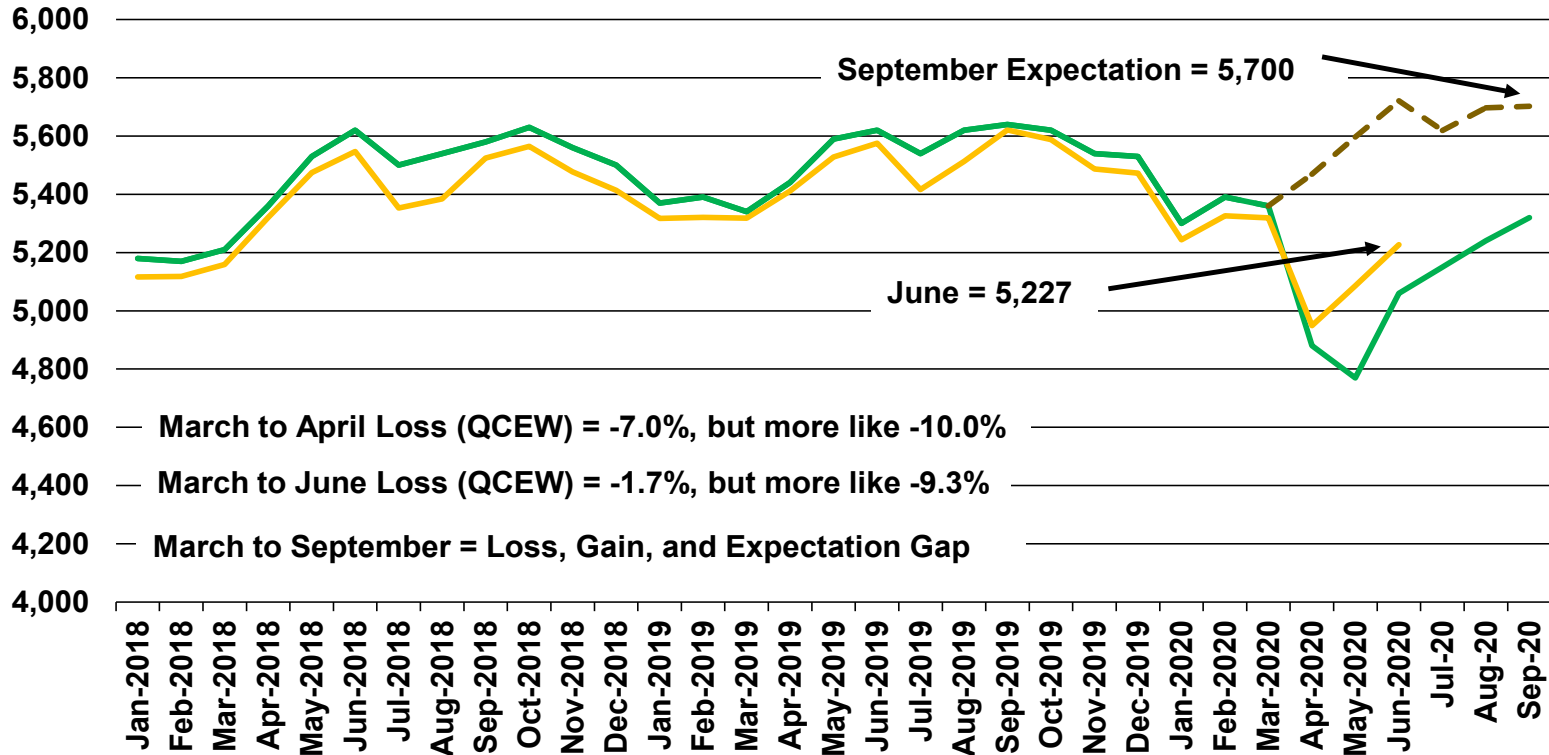
## Baker County - CES through September 2020 and QCEW Minus Farm Employment through June 2020



Source: Oregon Employment Department



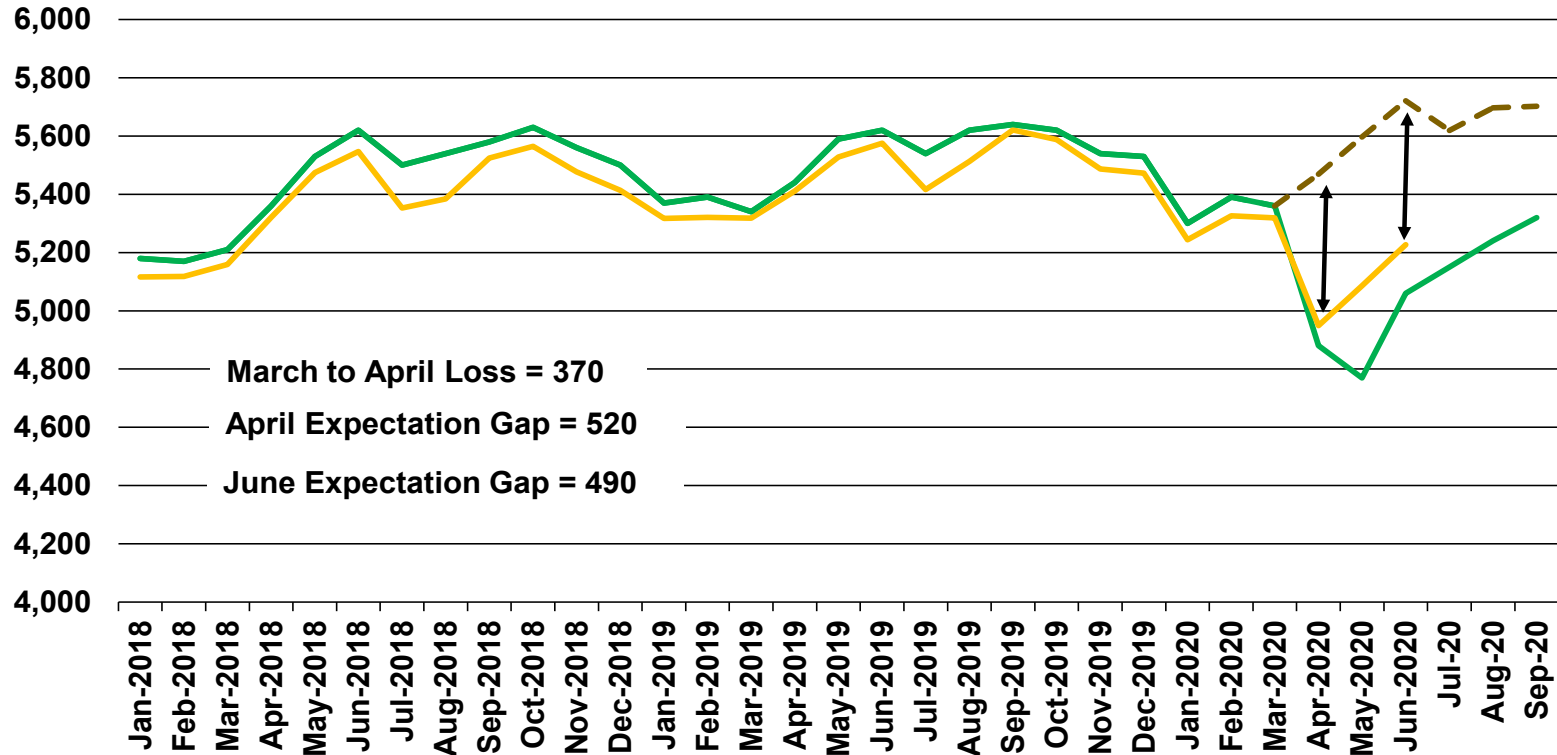
## Baker County - CES through September 2020 and QCEW Minus Farm Employment through June 2020



Source: Oregon Employment Department



## Baker County - CES through September 2020 and QCEW Minus Farm Employment through June 2020



Source: Oregon Employment Department



**Baker County - QCEW - 2020**  
**Over-the-Month Change 3-Year Average**

	<b>Mar</b>	<b>Apr</b>	<b>May</b>	<b>Jun</b>
<b>Total All Establishments</b>	<b>1.1%</b>	<b>2.6%</b>	<b>2.4%</b>	<b>1.7%</b>
<b>Total private</b>	<b>1.8%</b>	<b>2.9%</b>	<b>2.2%</b>	<b>1.8%</b>
Construction	4.9%	10.5%	9.8%	5.2%
Manufacturing	1.5%	-0.5%	-0.4%	2.2%
Trade, transportation, and utilities	0.0%	3.5%	0.8%	0.7%
Wholesale trade	0.9%	2.2%	1.2%	-5.3%
Retail trade	-0.5%	3.6%	0.8%	1.2%
Transportation, warehousing, and utilities	1.4%	3.3%	0.4%	1.4%
Information	-2.2%	-2.3%	3.0%	7.0%
Financial activities	-1.2%	3.3%	1.5%	-0.9%
Professional and business services	1.8%	1.6%	0.3%	4.1%
Education and health services	0.8%	-0.6%	0.1%	0.9%
Leisure and hospitality	3.0%	6.6%	5.8%	8.5%
Other services	4.0%	3.4%	1.1%	-4.7%
<b>Government</b>	<b>-1.5%</b>	<b>1.4%</b>	<b>3.5%</b>	<b>1.5%</b>
Federal government	-0.4%	7.5%	11.9%	12.7%
State government	-1.0%	2.0%	1.0%	2.0%
Local government	-1.9%	-0.1%	2.2%	-1.7%

*Source: Oregon Employment Department*





**Baker County - QCEW - 2020**  
**Over-the-Month Change - 3 Year Average vs. 2020**

	<b>March 3-Year</b>	<b>March 2020</b>	<b>April 3-Year</b>	<b>April 2020</b>
<b>Total All Establishments</b>	<b>1.1%</b>	<b>0.2%</b>	<b>2.6%</b>	<b>-6.2%</b>
<b>Total private</b>	<b>1.8%</b>	<b>0.5%</b>	<b>2.9%</b>	<b>-6.5%</b>
Construction	4.9%	2.3%	10.5%	-8.0%
Manufacturing	1.5%	0.4%	-0.5%	-4.9%
Trade, transportation, and utilities	0.0%	-1.6%	3.5%	-1.3%
Wholesale trade	0.9%	-2.5%	2.2%	-1.3%
Retail trade	-0.5%	-1.8%	3.6%	-0.8%
Transportation, warehousing, and utilities	1.4%	-0.5%	3.3%	-3.5%
Information	-2.2%	2.5%	-2.3%	-19.5%
Financial activities	-1.2%	-1.4%	3.3%	-4.3%
Professional and business services	1.8%	0.6%	1.6%	-0.6%
Education and health services	0.8%	0.3%	-0.6%	-4.7%
Leisure and hospitality	3.0%	3.5%	6.6%	-32.3%
Other services	4.0%	-2.9%	3.4%	-5.9%
<b>Government</b>	<b>-1.5%</b>	<b>-1.2%</b>	<b>1.4%</b>	<b>-4.9%</b>
Federal government	-0.4%	1.3%	7.5%	10.9%
State government	<b>-1.0%</b>	<b>-1.4%</b>	<b>2.0%</b>	<b>-1.0%</b>
Local government	-1.9%	-1.6%	-0.1%	-9.3%

**80% of Baker's April loss was in the private sector.**

**51% of loss was in leisure and hospitality.**

**13% of loss was in education and health services.**

**7% of loss was in manufacturing.**

**19% of loss was in local government.**

*Source: Oregon Employment Department*



## Baker County - Quarterly Census of Employment and Wages (QCEW) - 2020

	Mar	Apr	May	Jun
<b>Total All Establishments</b>	<b>5,543</b>	<b>5,199</b>	<b>5,342</b>	<b>5,490</b>
<b>Total private</b>	<b>4,427</b>	<b>4,138</b>	<b>4,255</b>	<b>4,381</b>
Construction	224	206	228	255
Manufacturing	546	519	537	548
Trade, transportation, and utilities	1,053	1,039	1,076	1,093
Wholesale trade	77	76	77	75
Retail trade	778	772	806	816
Transportation, warehousing, and utilities	198	191	193	202
Information	41	33	39	38
Financial activities	139	133	132	139
Professional and business services	349	347	347	326
Education and health services	985	939	942	940
Leisure and hospitality	566	383	479	529
Other services	272	256	188	220
<b>Government</b>	<b>1,116</b>	<b>1,061</b>	<b>1,087</b>	<b>1,109</b>
Federal government	156	173	188	222
State government	210	208	207	214
Local government	750	680	692	673

*Source: Oregon Employment Department*



**Baker County - QCEW - 2020**  
**Over-the-Year Change 2019 to 2020**

	<b>Mar</b>	<b>Apr</b>	<b>May</b>	<b>Jun</b>
<b>Total All Establishments</b>	<b>70</b>	<b>-380</b>	<b>-365</b>	<b>-264</b>
<b>Total private</b>	<b>80</b>	<b>-306</b>	<b>-280</b>	<b>-188</b>
Construction	0	-35	-38	-15
Manufacturing	-52	-75	-53	-35
Trade, transportation, and utilities	-9	-50	-35	-21
Wholesale trade	0	-4	-3	0
Retail trade	-12	-36	-21	-18
Transportation, warehousing, and utilities	3	-10	-11	-3
Information	-3	-11	-9	-11
Financial activities	9	-3	-10	4
Professional and business services	42	28	36	10
Education and health services	12	-4	-3	-11
Leisure and hospitality	23	-197	-130	-127
Other services	-12	-41	-101	-54
<b>Government</b>	<b>-10</b>	<b>-74</b>	<b>-85</b>	<b>-76</b>
Federal government	-7	-4	-10	1
State government	3	1	-3	3
Local government	-6	-71	-72	-80

*Source: Oregon Employment Department*



### Eastern Oregon - Unemployment Insurance Benefits Paid - 2020

	<b>March</b>	<b>April</b>	<b>May</b>	<b>June</b>	<b>July</b>	<b>August</b>	<b>September</b>	<b>6-Month Total</b>
Baker	\$216,255	\$1,576,933	\$1,920,455	\$2,187,025	\$2,601,738	\$1,331,261	\$990,459	\$10,824,126
Grant	\$219,409	\$773,687	\$1,012,986	\$1,021,068	\$933,678	\$554,921	\$339,183	\$4,854,932
Harney	\$149,936	\$566,716	\$606,876	\$624,402	\$557,833	\$292,334	\$393,220	\$3,191,317
Malheur	\$224,316	\$1,381,558	\$1,930,340	\$2,142,042	\$2,277,042	\$1,085,242	\$937,788	\$9,978,328
Morrow	\$151,134	\$596,007	\$753,391	\$798,999	\$878,180	\$466,658	\$376,217	\$4,020,586
Umatilla	\$1,061,331	\$7,744,601	\$10,729,346	\$8,449,311	\$7,682,790	\$4,091,639	\$3,870,107	\$43,629,125
Union	\$547,725	\$4,286,308	\$4,624,199	\$4,641,771	\$4,587,072	\$1,853,605	\$1,491,518	\$22,032,198
Wallowa	\$174,630	\$692,922	\$948,197	\$822,441	\$721,980	\$551,133	\$333,493	\$4,244,796
<b>Eastern Oregon</b>	<b>\$2,744,736</b>	<b>\$17,618,732</b>	<b>\$22,525,790</b>	<b>\$20,687,059</b>	<b>\$20,240,313</b>	<b>\$10,226,793</b>	<b>\$8,731,985</b>	<b>\$102,775,408</b>

*Source: Oregon Employment Department*



For More Information

**Chris Rich, Eastern Oregon Regional Economist**

[Christopher.M.Rich@Oregon.gov](mailto:Christopher.M.Rich@Oregon.gov)

(541) 519-0315

[www.Qualityinfo.org](http://www.Qualityinfo.org)

Get the latest workforce and economic research delivered to your inbox!

Sign up at <https://www.qualityinfo.org/p-sofrm/>

**Join the conversation:**

[OregonEmployment.Blogspot.com](http://OregonEmployment.Blogspot.com)

Twitter: [@OED Research](https://twitter.com/OED_Research)

