

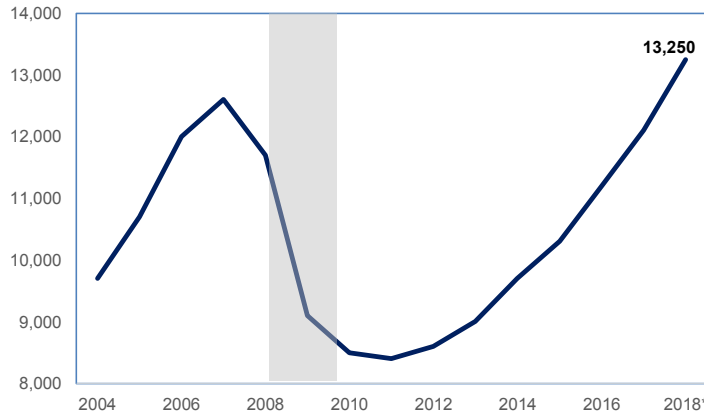
# Clackamas County

## ECONOMIC INDICATORS



### A focus on the construction industry

Construction jobs in Clackamas County have grown by 58 percent since the recession.



Clackamas County gained 2,700 new jobs from a year ago.

12-Month Employment Growth: Clackamas County August-2017 to August-2018 (Net gain: 2,700 jobs)



## Employment and Industry Trends

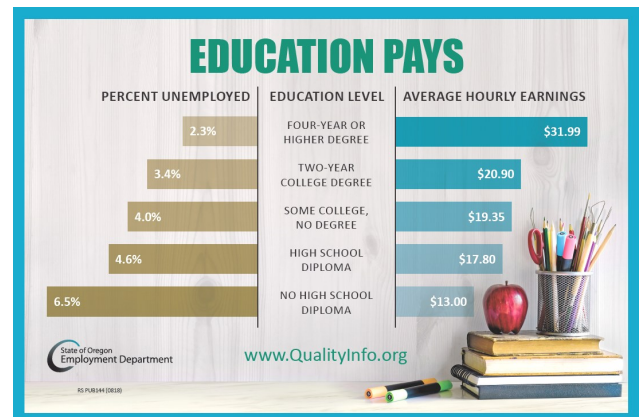
Clackamas County has added 4,750 construction jobs since 2010 and average employment reached 13,250 in the first 8 months of 2018. Two-thirds of this job growth was with specialty trade contractors who perform specific activities like plumbing, painting, electrical work, etc. Year-to-year employment growth was at 2,700 in August and the unemployment rate was at 3.7 percent.

## Many good paying jobs will be available for those with a Bachelor's degree in the next decade.

### Typical Entry Level Education: Bachelor Degree, Portland Tri-County

Occupation	Average Annual Job Openings, 2017-2027	2018 Hourly Median Wage
General and Operations Managers	1,859	\$46.05
Registered Nurses	1,530	\$45.19
Software Developers, Applications	1,113	\$51.89
Business Operations Specialists, All Other	1,072	\$33.51
Managers, All Other	1,053	\$45.85
Accountants and Auditors	967	\$31.60
Substitute Teachers	719	\$22.21
Education, Training, and Library Workers, All Other	636	\$17.39
Market Research Analysts and Marketing Specialists	604	\$34.54
Financial Managers	506	\$57.03
Management Analysts	463	\$40.71
Sales Managers	455	\$55.39
Human Resources Specialists	451	\$29.35
Marketing Managers	427	\$57.92
Elementary School Teachers, Except Special Education	387	\$71.432
Computer and Information Systems Managers	351	\$65.25
Computer Systems Analysts	318	\$45.53
Secondary School Teachers, Except Special and Career/Tech Educ	312	\$78,500
Sales Reps, Wholesale and Manufacturing, Tech and Scientific Prod	298	\$38.09
Teachers and Instructors, All Other, Except Substitute Teachers	285	\$46,183

High wage jobs in Clackamas, Multnomah, and Washington counties requiring a bachelor's degree include various industry-sector managers, registered nurses, software and computer spe-



For any questions or to be added to the list serve:

Contact: Lynn Wallis [Lynn.N.Wallis@oregon.gov](mailto:Lynn.N.Wallis@oregon.gov) (971) 804-2100