

# Clackamas County

## ECONOMIC INDICATORS

November 2018

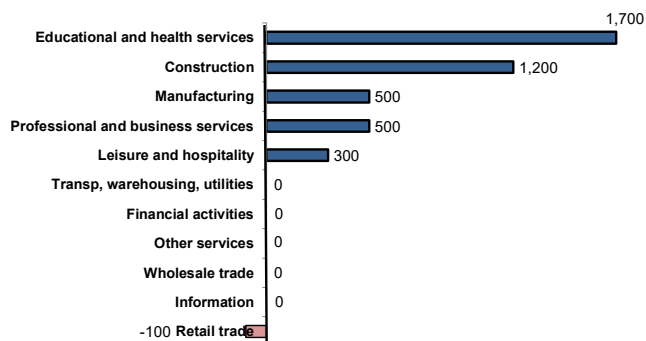


Health care and construction are leading the charge in new jobs.

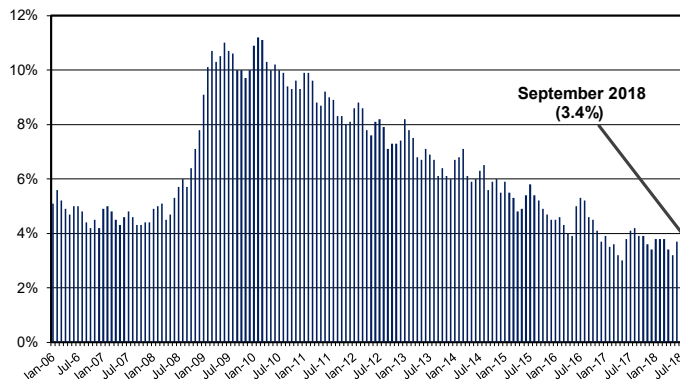
Clackamas County's unemployment rate fell to 3.4% in September from 3.7% in August.

12-Month Private Employment Growth: Clackamas County  
September-2017 to September-2018

(Net gain: 4,100 jobs)



Unemployment Rate, Clackamas County  
January 2006 to September 2018

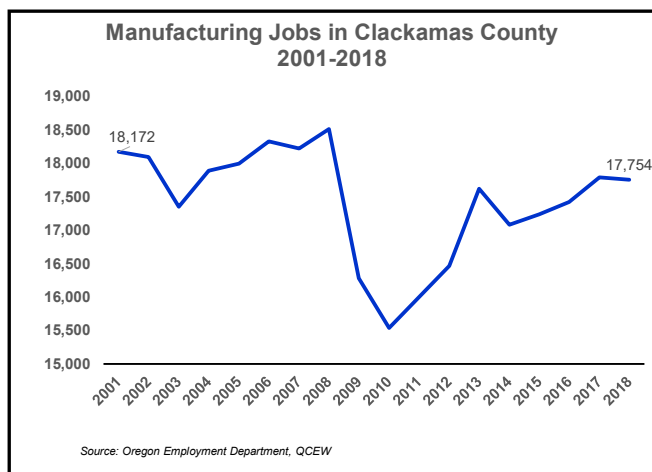


### Industry and Employment Trends

Clackamas County added 4,100 jobs in private industry from a year ago with health care and construction providing 71 percent of the employment growth. The only job loss was in retail trade which shed 100 jobs. The unemployment rate in the county fell 0.3 percentage points in September from 3.7 percent in August.

### Jobs in manufacturing are making a come back but wages are barely keeping up with inflation.

The manufacturing industry in Clackamas County has added back 96 percent of the manufacturing jobs lost during the recession. There continues to be a high demand for workers in the manufacturing industry. In September, there were 287 online help-wanted ads for manufacturing (production) workers in Clackamas County and 1,578 help-wanted ads in the Portland Tri-County area. Although the nominal average wage, which is not adjusted for inflation, has been increasing by an average of 2.7 percent since 2002, real wages in manufacturing have dropped and have been leveling off since 2015.



For any questions or to be added to the list serve:

Contact: Lynn Wallis [Lynn.N.Wallis@oregon.gov](mailto:Lynn.N.Wallis@oregon.gov) (971) 804-2100