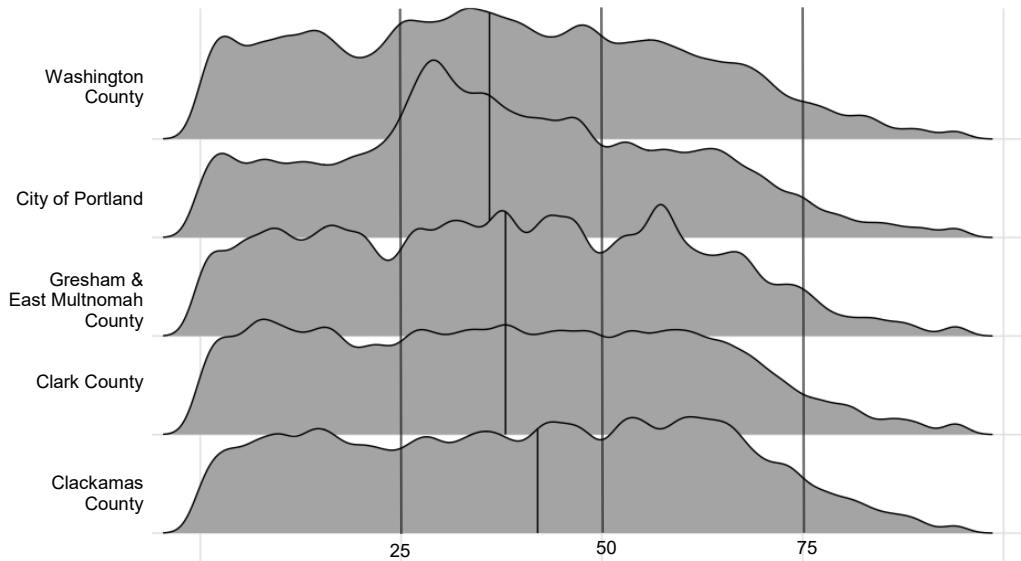


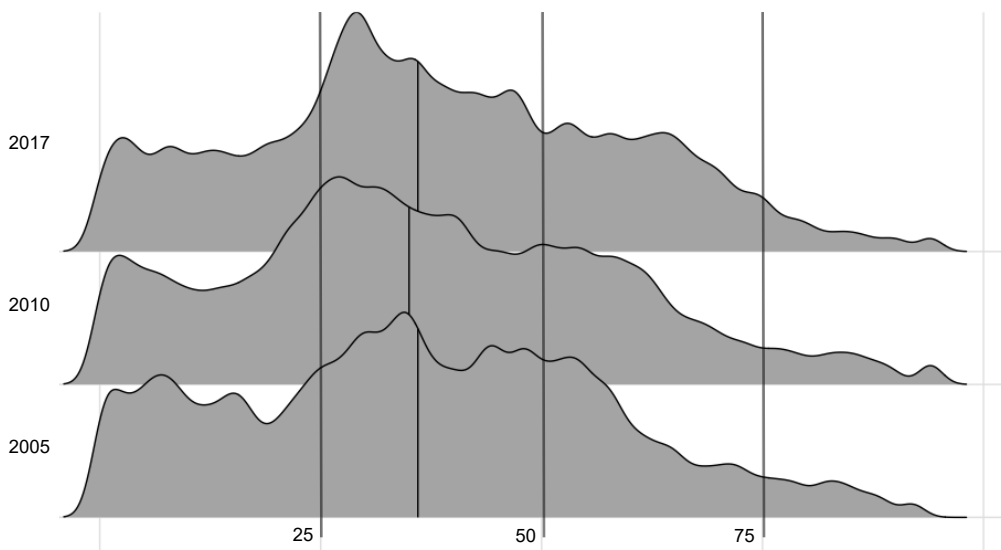
**Age Distribution**



The City of Portland has an unusual age distribution. The median age is just 37, but only 18 percent of the population is children. An impressive 20 percent of the population is between the ages of 25 and 34. Among the counties surrounding the city of Portland, we see a noticeable dip in the number of adults age 20 to 24.

In Clackamas County, almost 8 percent of the population is age 60 to 64, the peak of the age distribution. This pulls the average age in Clackamas County up to 42.

**City of Portland - Age Distribution - 2005, 2010 & 2017**



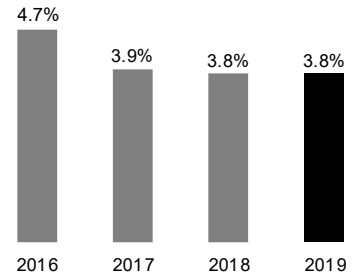
The popularity of the City of Portland among younger adults between 25 and 40 is impressive. But the city has been popular with this age range since at least 2005.

In 2005, 23 percent of the population was under age 18. In 2017, that percentage is just 18 percent. In 2005, just 10 percent of the population was over age 64. In 2017, that percentage is 13 percent.

Interestingly, there's a consistent dip in the Generation X folks (born in the 1960's) that can be seen in 2005, 2010 and 2017.

**EMPLOYMENT TRENDS**

**July  
Unemployment Rate**  
Portland Metro - Seasonally adjusted



**Employment Growth**  
Portland Metro

<b>July 2019</b>	<b>1,222,200</b>
Growth Year-over-year	+27,300 (+2.3%)

**Industry Growth**

Portland Metro - July  
Year-over-year growth (percentage)

Transportation & Warehousing	+4,200 (+11.2%)
Construction	+3,800 (+5.1%)
Professional & Business Services	+8,000 (+4.3%)
Leisure & Hospitality	+4,500 (+3.5%)
Manufacturing	+2,500 (+1.9%)
Financial Activities	+500 (+0.7%)
Healthcare & Social Assistance	+600 (+0.4%)
Information	+0 (+0%)

**Want to join the distribution list?  
Have questions? E-mail me!**

Christian Kaylor  
Christian.R.Kaylor@oregon.gov