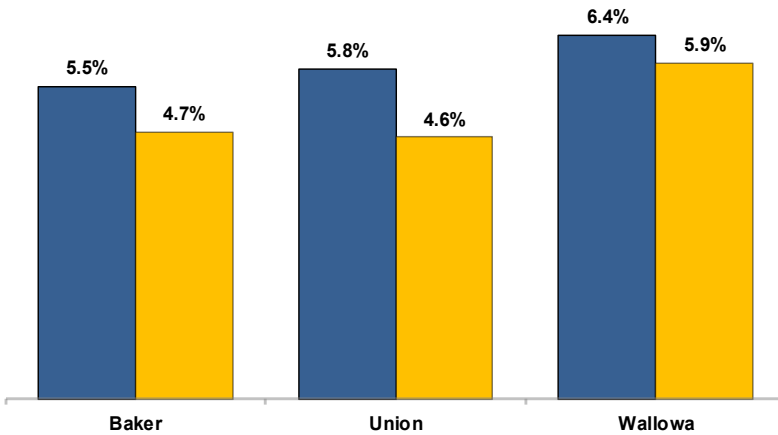


Unemployment Rates (Seasonally Adjusted)

■ December 2018 ■ December 2019



Unemployment Rate News

Union County's seasonally adjusted unemployment rate for December 2019 was 4.6 percent, while Baker County came in at 4.7 percent and Wallowa County at 5.9 percent. All three were above Oregon's statewide rate of 3.7 percent and the national rate of 3.5 percent.

All three counties had lower seasonally adjusted unemployment rates in December 2019 than the previous December.

Baker and Union counties' December 2019 rates are their lowest December rates since comparable statistics began in 1990. The only lower December rate for Wallowa County was in 2017.

Union County's rate ranked in a tie for 22nd lowest among Oregon's 36 counties while Baker County's rate ranked in a three-way tie for 24th and Wallowa County's rate sat at 34th.

Nonfarm Employment Change

December 2018 to December 2019

Baker County dropped an estimated 70 jobs over the year. The private sector lost 60 jobs led by losses in manufacturing and retail trade. Gains were led by education and health services. The public sector lost 10 jobs with losses in federal and state government overcoming a gain in local government.

Union County employment increased an estimated 40 jobs over the year. The private sector increased by 40 jobs led by gains in leisure and hospitality. Losses were led by retail trade. The public sector saw a net change of zero jobs with a gain in local government overcoming a loss in state government while federal government was unchanged.

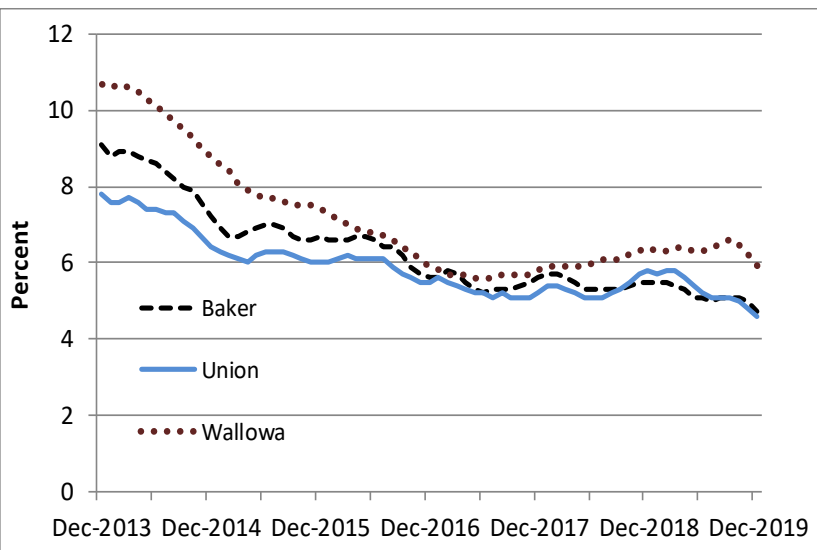
Wallowa County gained an estimated 40 jobs over the year. The private sector increased by 50 jobs. Gains were led by wholesale and retail trade and financial activities. Losses were confined to manufacturing and mining and logging. The public sector lost 10 jobs with a loss in local government while federal and state government were unchanged.

Notable Industry Gains and Losses

Over-the-Year Employment Change from December 2018

	<u>Baker</u>	<u>Union</u>	<u>Wallowa</u>
↑	Private Education/Health Services (+20)	Leisure/Hospitality (+40)	Wholesale/Retail Trade (+40)
	Construction (+10)	Wholesale Trade (+20)	Financial Activities (+30)
	Transportation/Warehousing/Utilities (+10)	Professional/Business Services (+20)	Leisure/Hospitality (+20)
	Leisure/Hospitality (+10)	Other Services (+20)	Private Education/Health Services (+10)
		Construction (+10)	
↓	Manufacturing (-40)	Retail Trade (-20)	Manufacturing (-30)
	Retail Trade (-40)	Financial Activities (-20)	Mining/Logging (-20)
	Other Services (-20)	Local Government (-20)	Local Government (-10)

Unemployment rate remains fairly level



Want to learn more about the Oregon economy?

Read our blog at: oregonemployment.blogspot.com/

Follow us on Twitter at: [Twitter.com/OED_Research](https://twitter.com/OED_Research)

Visit our web site at: QualityInfo.org

Visit our subscription service at: qualityinfo.org/p-sofrm

For more economic or labor market data about Baker, Union or Wallowa counties, contact:

Tony Wendel, Workforce Analyst

Desk: 541-276-9050 ext. 232 Cell: 541-667-7027

E-mail: Tony.A.Wendel@oregon.gov

Chris Rich, Regional Economist

Desk: 541-963-7111 ext. 226 Cell: 541-519-0315

E-mail: Christopher.M.Rich@oregon.gov

Want to be added to the monthly distribution list?

E-mail me at: Tony.A.Wendel@oregon.gov