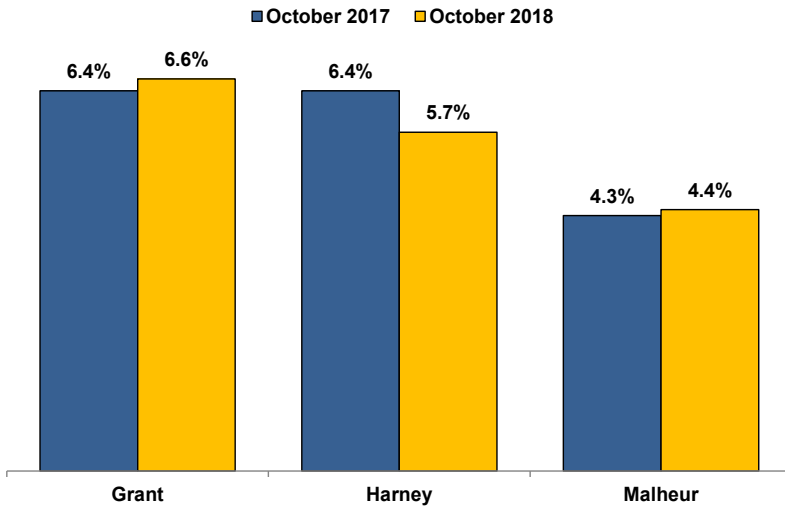


Unemployment Rates (Seasonally Adjusted)



Unemployment Rate News

Malheur County's seasonally adjusted unemployment rate for October 2018 was 4.4 percent while Harney County came in at 5.7 percent and Grant County at 6.6 percent. All three were above Oregon's statewide rate of 3.8 percent and the national rate of 3.7 percent.

Harney County had a lower seasonally adjusted unemployment rate in October 2018 than the previous October. Malheur and Grant counties' rates were slightly higher.

The October 2018 rate for Harney County is the lowest October rate since comparable statistics began in 1990. The only lower October rates for Malheur and Grant counties were in 2017.

Malheur County's rate ranked in a tie for 14th lowest among Oregon's 36 counties while Harney County's ranked in a three-way tie for 30th and Grant County's at 36th.

Nonfarm Employment Change

October 2017 to October 2018

Note: Home Care Workers reclassified from state government to private industry.

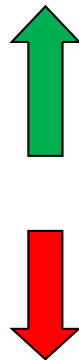
Grant County saw an estimated net change of zero jobs over the year. The private sector added 10 jobs led by a gain in mining and logging. The public sector dropped 10 jobs with losses in federal and state government overcoming a gain in local government.

Harney County employment increased by an estimated 40 jobs over the year. The private sector added 100 jobs led by gains in education and health services. The public sector dropped 60 jobs led by losses in state and local government.

Malheur County gained an estimated 90 jobs over the year. The private sector added 70 jobs. Gains were led by education and health services and mining, logging, and construction while losses were led by wholesale trade. The public sector added 20 jobs with a gain in local government overcoming losses in state and federal government.

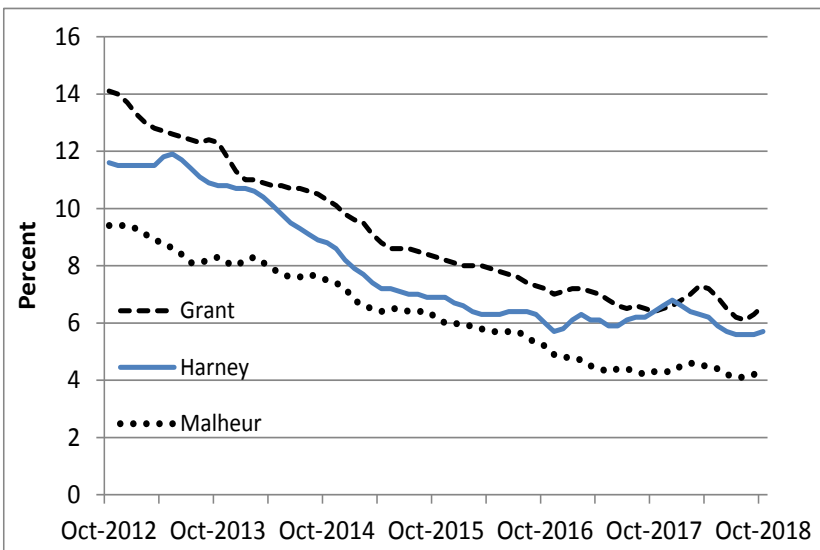
Notable Industry Gains and Losses

Over-the-Year Employment Change from October 2017



<u>Grant</u>	<u>Harney</u>	<u>Malheur</u>
Mining/Logging (+20)	Private Education/Health Services (+30)	Local Government (+150)
Retail Trade (+10)	Professional/Business Services (+20)	Private Education/Health Services (+140)
Leisure/Hospitality (+10)	Retail Trade (+20)	Mining/Logging/Construction (+50)
Other Services (+10)	Leisure/Hospitality (+20)	
Local Government (+10)		
Financial Activities (-20)	State Government (-50)	Wholesale Trade (-100)
Wholesale Trade (-10)	Local Government (-20)	State Government (-90)
Professional/Business Services (-10)	Wholesale Trade (-10)	Manufacturing (-40)
		Federal Government (-40)

Unemployment rate staying fairly level



Want to learn more about the Oregon economy?

Read our blog at: oregonemployment.blogspot.com/

Follow us on Twitter at: [Twitter.com/OREmployment](https://twitter.com/OREmployment)

Visit our web site at: QualityInfo.org

Visit our subscription service at: qualityinfo.org/p-sofrm

For more economic or labor market data about Grant, Harney or Malheur counties, contact:

Tony Wendel, Workforce Analyst

Desk: 541-276-9050 ext. 232 Cell: 541-667-7027

E-mail: Tony.A.Wendel@oregon.gov

Chris Rich, Regional Economist

Desk: 541-963-7111 ext. 226 Cell: 541-519-0315

E-mail: Christopher.M.Rich@oregon.gov

Want to be added to the monthly distribution list?

E-mail me at: Tony.A.Wendel@oregon.gov