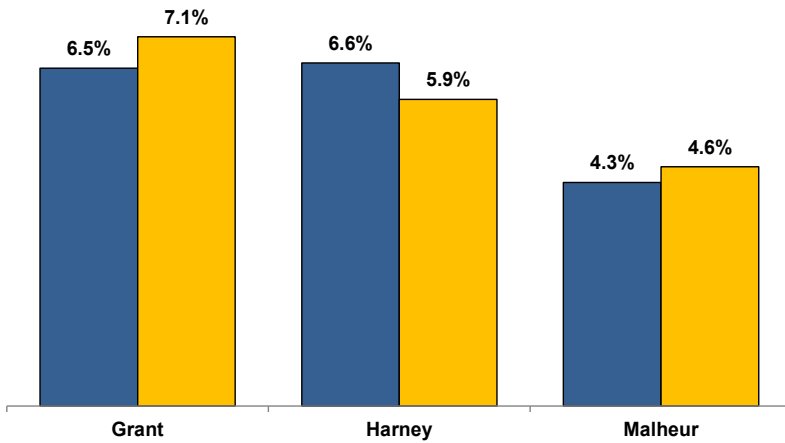


**Unemployment Rates (Seasonally Adjusted)**

■ November 2017 ■ November 2018



**Unemployment Rate News**

Malheur County's seasonally adjusted unemployment rate for November 2018 was 4.6 percent while Harney County came in at 5.9 percent and Grant County at 7.1 percent. All three were above Oregon's statewide rate of 3.9 percent and the national rate of 3.7 percent.

Harney County had a lower seasonally adjusted unemployment rate in November 2018 than the previous November. Malheur and Grant counties' rates were higher than a year ago.

Since comparable statistics began in 1990, the only lower November rate for Malheur County was in 2017. Harney County's only lower November rate was in 2016. Grant County had lower November rates in both 2017 and 2016.

Malheur County's rate ranked in a tie for 16th lowest among Oregon's 36 counties while Harney County's ranked 32nd and

**Nonfarm Employment Change**

November 2017 to November 2018

*Note: Home Care Workers reclassified from state government to private industry.*

Grant County lost an estimated 10 jobs over the year. The private sector dropped 10 jobs with several small losses overcoming a gain in leisure and hospitality. The public sector saw a net change of zero with losses in federal and state government offsetting a gain in local government.

Harney County employment increased by an estimated 30 jobs over the year. The private sector added 90 jobs led by gains in education and health services and leisure and hospitality. The public sector dropped 60 jobs with losses in state and local government.

Malheur County gained an estimated 130 jobs over the year. The private sector added 50 jobs. Gains were led by education and health services and transportation, warehousing, and utilities while losses were led by professional and business services. The public sector added 80 jobs with a gain in local

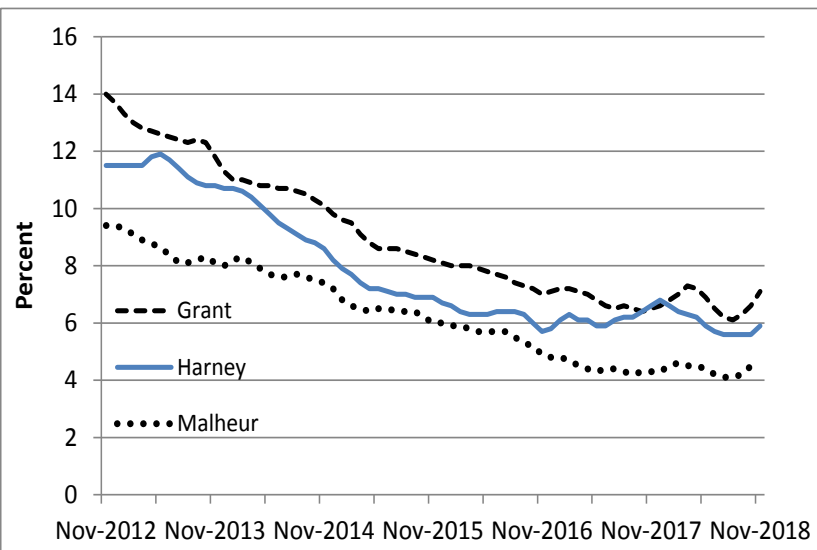
**Notable Industry Gains and Losses**

Over-the-Year Employment Change from November 2017

Grant	Harney	Malheur
Leisure/Hospitality (+30)	Private Education/Health Services (+30)	Local Government (+190)
Local Government (+20)	Leisure/Hospitality (+30)	Private Education/Health Services (+130)
Mining/Logging (+20)	Professional/Business Services (+10)	Transportation/Warehousing/Utilities (+30)
Retail Trade (+10)	Other Services (+10)	
Other Services (+10)		
Manufacturing (-10)	State Government (-30)	State Government (-110)
Wholesale Trade (-10)	Local Government (-30)	Professional/Business Services (-50)
Information (-10)	Wholesale Trade (-10)	Wholesale Trade (-40)
Financial Activities (-10)		



**Unemployment rate ticking up**



**Want to learn more about the Oregon economy?**

Read our blog at: [oregonemployment.blogspot.com/](http://oregonemployment.blogspot.com/)

Follow us on Twitter at: [Twitter.com/OREmployment](https://twitter.com/OREmployment)

Visit our web site at: [QualityInfo.org](http://QualityInfo.org)

Visit our subscription service at: [qualityinfo.org/p-sofrm](http://qualityinfo.org/p-sofrm)

**For more economic or labor market data about Grant, Harney or Malheur counties, contact:**

**Tony Wendel, Workforce Analyst**

Desk: 541-276-9050 ext. 232 Cell: 541-667-7027

E-mail: [Tony.A.Wendel@oregon.gov](mailto:Tony.A.Wendel@oregon.gov)

**Chris Rich, Regional Economist**

Desk: 541-963-7111 ext. 226 Cell: 541-519-0315

E-mail: [Christopher.M.Rich@oregon.gov](mailto:Christopher.M.Rich@oregon.gov)

**Want to be added to the monthly distribution list?**

E-mail me at: [Tony.A.Wendel@oregon.gov](mailto:Tony.A.Wendel@oregon.gov)