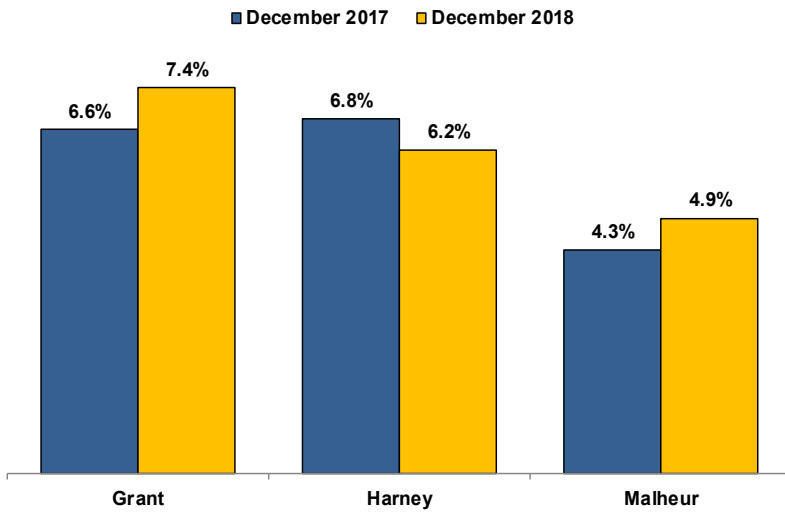


**Unemployment Rates (Seasonally Adjusted)**



**Unemployment Rate News**

Malheur County's seasonally adjusted unemployment rate for December 2018 was 4.9 percent while Harney County came in at 6.2 percent and Grant County at 7.4 percent. All three were above Oregon's statewide rate of 4.1 percent and the national rate of 3.9 percent.

Harney County had a lower seasonally adjusted unemployment rate in December 2018 than the previous December. Malheur and Grant counties' rates were higher than a year ago.

Since comparable statistics began in 1990, the only lower December rate for Harney County was in 2016. Grant and Malheur counties had lower December rates in both 2017 and 2016.

Malheur County's rate ranked in a three-way tie for 18th lowest among Oregon's 36 counties while Harney County's ranked in a tie for 32nd and Grant County's was last at 36th.

**Nonfarm Employment Change**

December 2017 to December 2018

*Note: Home Care Workers reclassified from state government to private industry.*

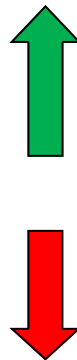
Grant County saw a net change of zero jobs over the year. The private sector added 20 jobs led by a gain in leisure and hospitality. The public sector dropped 20 jobs with losses in federal and state government.

Harney County employment increased by an estimated 40 jobs over the year. The private sector added 70 jobs led by gains in education and health services and leisure and hospitality. The public sector dropped 30 jobs with losses in state and local government overcoming a gain in federal government.

Malheur County gained an estimated 180 jobs over the year. The private sector added 110 jobs. Gains were led by education and health services while losses were led by professional and business services and manufacturing. The public sector added 70 jobs with a gain in local government overcoming losses in state and federal government.

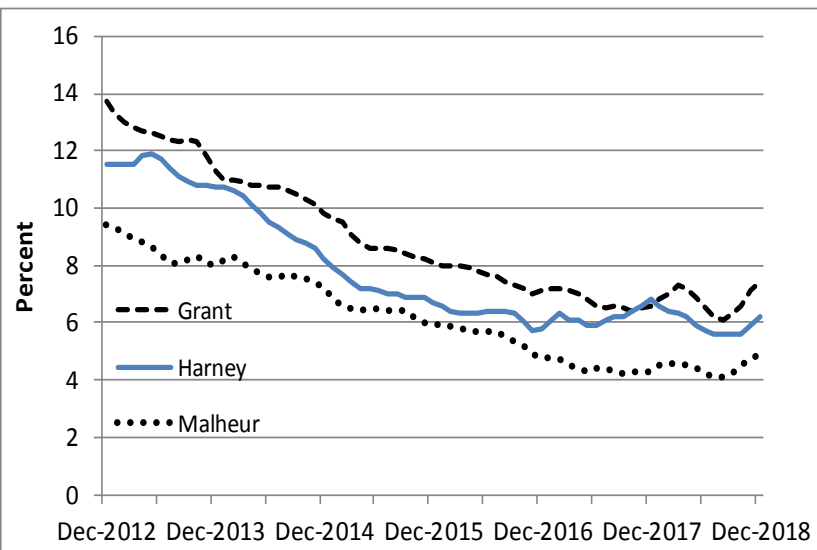
**Notable Industry Gains and Losses**

Over-the-Year Employment Change from December 2017



Grant	Harney	Malheur
Leisure/Hospitality (+20)	Private Education/Health Services (+30)	Local Government (+180)
Retail Trade (+10)	Leisure/Hospitality (+20)	Private Education/Health Services (+130)
Transportation/Warehousing/Utilities (+10)	Professional/Business Services (+10)	Financial Activities (+20)
	Other Services (+10)	Wholesale Trade (+20)
Manufacturing (-10)	State Government (-30)	State Government (-90)
Wholesale Trade (-10)	Local Government (-10)	Professional/Business Services (-40)
Financial Activities (-10)		Manufacturing (-40)
State Government (-10)		

**Unemployment rate ticking up**



**Want to learn more about the Oregon economy?**

Read our blog at: [oregonemployment.blogspot.com/](http://oregonemployment.blogspot.com/)

Follow us on Twitter at: [Twitter.com/OREmployment](https://twitter.com/OREmployment)

Visit our web site at: [QualityInfo.org](http://QualityInfo.org)

Visit our subscription service at: [qualityinfo.org/p-sofrm](http://qualityinfo.org/p-sofrm)

**For more economic or labor market data about Grant, Harney or Malheur counties, contact:**

**Tony Wendel, Workforce Analyst**

Desk: 541-276-9050 ext. 232 Cell: 541-667-7027

E-mail: [Tony.A.Wendel@oregon.gov](mailto:Tony.A.Wendel@oregon.gov)

**Chris Rich, Regional Economist**

Desk: 541-963-7111 ext. 226 Cell: 541-519-0315

E-mail: [Christopher.M.Rich@oregon.gov](mailto:Christopher.M.Rich@oregon.gov)

**Want to be added to the monthly distribution list?**

E-mail me at: [Tony.A.Wendel@oregon.gov](mailto:Tony.A.Wendel@oregon.gov)