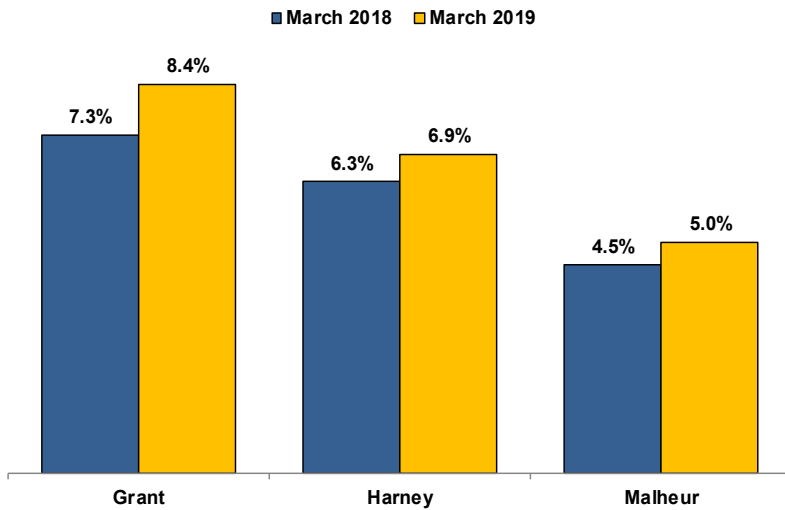


Unemployment Rates (Seasonally Adjusted)



Unemployment Rate News

Malheur County's seasonally adjusted unemployment rate for March 2019 was 5.0 percent while Harney County came in at 6.9 percent and Grant County at 8.4 percent. All three were above Oregon's statewide rate of 4.4 percent and the national rate of 3.8 percent.

All three counties had higher seasonally adjusted unemployment rates in March 2019 than the previous March.

Since comparable statistics began in 1990, the only lower March rates for Malheur County were in 2018 and 2017. Harney County had lower March rates in 2018, 2017, and 2016. Grant County had lower March rates in 2018, 2017, 2016, and 2007.

Malheur County's rate ranked in a three-way tie for 17th lowest among Oregon's 36 counties while Harney County's ranked 34th and Grant County's was last at 36th.

Nonfarm Employment Change

March 2018 to March 2019

Grant County gained an estimated 20 jobs over the year. The private sector dropped 10 jobs with small losses overcoming small gains across industries. The public sector added 30 jobs with a gain in local government.

Harney County employment increased by an estimated 20 jobs over the year. The private sector added 30 jobs with gains in leisure and hospitality and retail trade overcoming a loss in transportation, warehousing, and utilities. The public sector dropped 10 jobs with a loss in local government overcoming gains in state government and federal government.

Malheur County added an estimated 90 jobs over the year. The private sector decreased by 50 jobs. Losses were led by manufacturing, leisure and hospitality, wholesale trade, professional and business services, and education and health services while gains were led by retail trade; transportation, warehousing, and utilities; and other services. The public sector added 140 jobs with gains in local government, state government, and federal government.

Notable Industry Gains and Losses

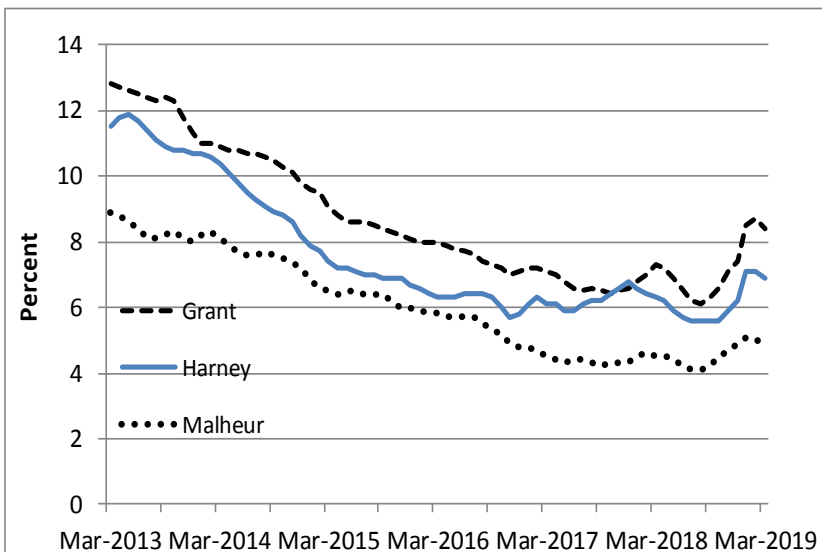
Over-the-Year Employment Change from March 2018



Grant	Harney	Malheur
Local Government (+30)	Leisure/Hospitality (+30)	Local Government (+120)
Mining/Logging (+10)	State Government (+20)	Other Services (+20)
Leisure/Hospitality (+10)	Retail Trade (+10)	Transportation/Warehousing/Utilities (+20)
	Federal Government (+10)	

Wholesale Trade (-10)	Local Government (-40)	Manufacturing (-30)
Information (-10)	Transportation/Warehousing/Utilities (-10)	Leisure/Hospitality (-30)
Financial Activities (-10)		Wholesale Trade (-20)
		Professional/Business Services (-20)

Unemployment rate on slight upward trend



Want to learn more about the Oregon economy?

Read our blog at: oregonemployment.blogspot.com/

Follow us on Twitter at: [Twitter.com/OED_Research](https://twitter.com/OED_Research)

Visit our web site at: QualityInfo.org

Visit our subscription service at: qualityinfo.org/p-sofrm

For more economic or labor market data about Grant, Harney or Malheur counties, contact:

Tony Wendel, Workforce Analyst

Desk: 541-276-9050 ext. 232 Cell: 541-667-7027

E-mail: Tony.A.Wendel@oregon.gov

Chris Rich, Regional Economist

Desk: 541-963-7111 ext. 226 Cell: 541-519-0315

E-mail: Christopher.M.Rich@oregon.gov

Want to be added to the monthly distribution list?

E-mail me at: Tony.A.Wendel@oregon.gov