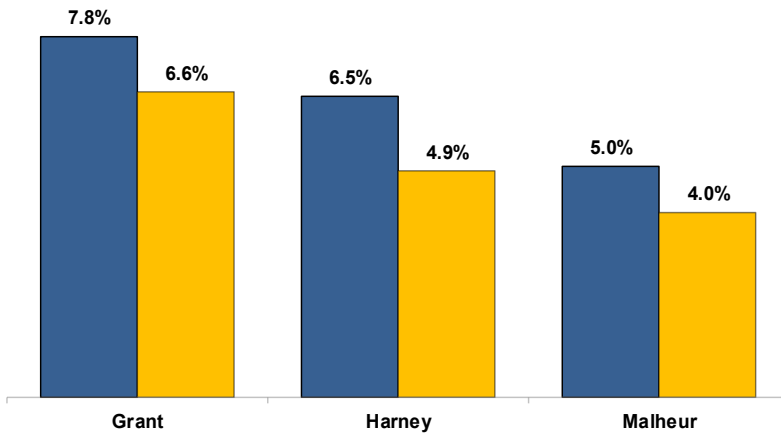


Unemployment Rates (Seasonally Adjusted)

■ December 2018 ■ December 2019



Unemployment Rate News

Malheur County's seasonally adjusted unemployment rate for December 2019 was 4.0 percent, while Harney County came in at 4.9 percent and Grant County at 6.6 percent. All three were above Oregon's statewide rate of 3.7 percent and the national rate of 3.5 percent.

All three counties had lower seasonally adjusted unemployment rates in December 2019 than the previous December.

The December 2019 rates for all three counties are their lowest December rates since comparable statistics began in 1990.

Malheur County's rate ranked in a four-way tie for 12th lowest among Oregon's 36 counties while Harney County's ranked in a three-way tie for 28th and Grant County's was last at 36th.

Nonfarm Employment Change

December 2018 to December 2019

Grant County gained an estimated 10 jobs over the year. The private sector dropped 30 jobs led by a loss in retail trade. The public sector added 40 jobs with gains in local and federal government outpacing a loss in state government.

Harney County added an estimated 70 jobs over the year. The private sector gained 80 jobs led by gains in retail trade and professional and business services. Losses were confined to goods-producing. The public sector lost 10 jobs with a loss in local government while federal and state government were unchanged.

Malheur County employment increased by an estimated 90 jobs over the year. The private sector added 40 jobs led by gains in manufacturing, retail trade, and leisure and hospitality. Losses were led by transportation, warehousing, and utilities and wholesale trade. The public sector added 50 jobs with gains in federal, state, and local government.

Notable Industry Gains and Losses

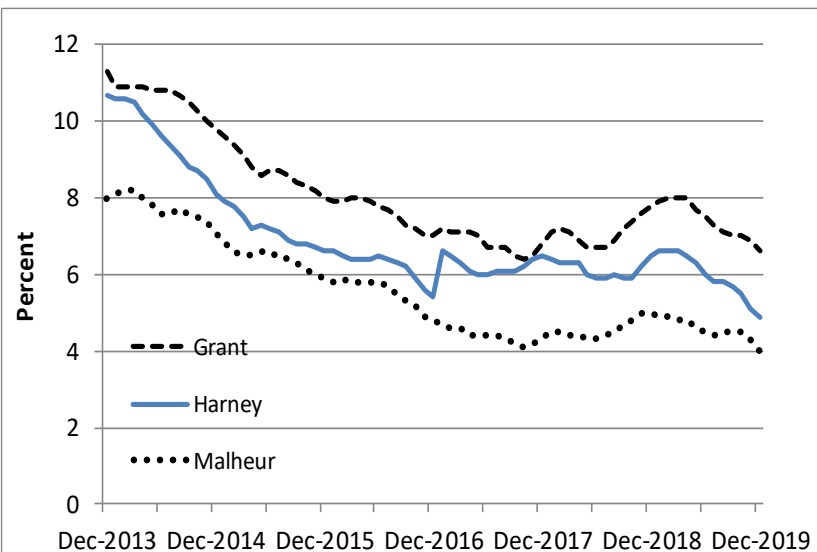
Over-the-Year Employment Change from December 2018



Grant	Harney	Malheur
Local Government (+30)	Retail Trade (+20)	Manufacturing (+90)
Federal Government (+20)	Professional/Business Services (+20)	Leisure/Hospitality (+40)
Wholesale Trade (+10)	Wholesale Trade (+10)	Retail Trade (+40)
Private Education/Health Services (+10)	Financial Activities (+10)	Other Services (+20)

Retail Trade (-20)	Goods-producing (-10)	Transportation/Warehousing/Utilities (-80)
Information (-10)	Local Government (-10)	Wholesale Trade (-40)
Manufacturing (-10)		Private Education/Health Services (-20)
Mining/Logging (-10)		

Unemployment rate remains fairly level



Want to learn more about the Oregon economy?

Read our blog at: oregonemployment.blogspot.com/

Follow us on Twitter at: [Twitter.com/OED_Research](https://twitter.com/OED_Research)

Visit our web site at: QualityInfo.org

Visit our subscription service at: qualityinfo.org/p-sofrm

For more economic or labor market data about Grant, Harney or Malheur counties, contact:

Tony Wendel, Workforce Analyst

Desk: 541-276-9050 ext. 232 Cell: 541-667-7027

E-mail: Tony.A.Wendel@oregon.gov

Chris Rich, Regional Economist

Desk: 541-963-7111 ext. 226 Cell: 541-519-0315

E-mail: Christopher.M.Rich@oregon.gov

Want to be added to the monthly distribution list?

E-mail me at: Tony.A.Wendel@oregon.gov