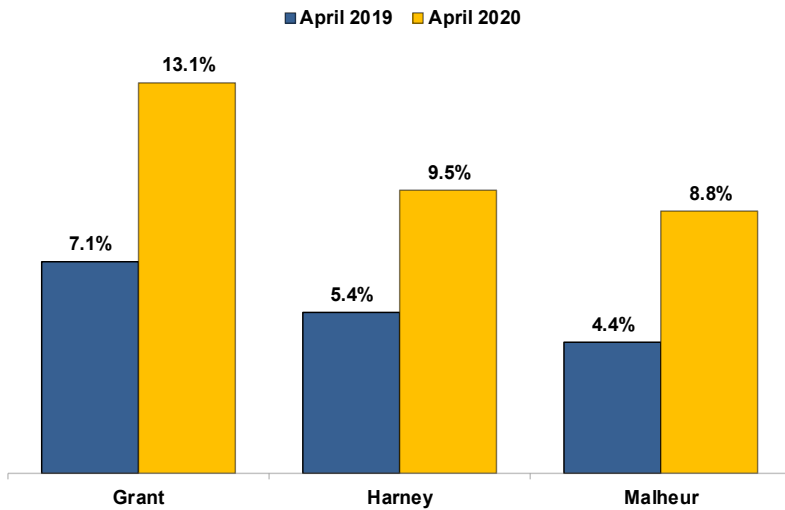


Unemployment Rates (Seasonally Adjusted)



Unemployment Rate News

Malheur County's seasonally adjusted unemployment rate for April 2020 was 8.8 percent, while Harney County came in at 9.5 percent and Grant County at 13.1 percent. All three were below Oregon's statewide rate of 14.2 percent and the national rate of 14.7 percent.

Malheur County's rate ranked third lowest among Oregon's 36 counties for the month while Harney County's ranked in a tie for fourth and Grant County's sat in a tie for 12th.

All three counties had higher seasonally adjusted unemployment rates in April 2020 than the previous April due to the effects of COVID-19.

Harney County (+4.1 percentage points) ranked third among Oregon's counties for smallest over-the-year change. Malheur County (+4.4) ranked fifth and Grant County (+6.0) sixth.

Nonfarm Employment Change

April 2019 to April 2020

Grant County lost an estimated 100 jobs over the year. The private sector dropped 100 jobs led by losses in leisure and hospitality, construction, and education and health services. The public sector saw a net change of zero jobs with a gain in federal government offsetting a loss in state government while local government was unchanged.

Harney County dropped an estimated 200 jobs over the year. The private sector lost 130 jobs with losses led by leisure and hospitality and goods-producing. The public sector lost 70 jobs with a loss in local government overcoming a gain in federal government while state government was unchanged.

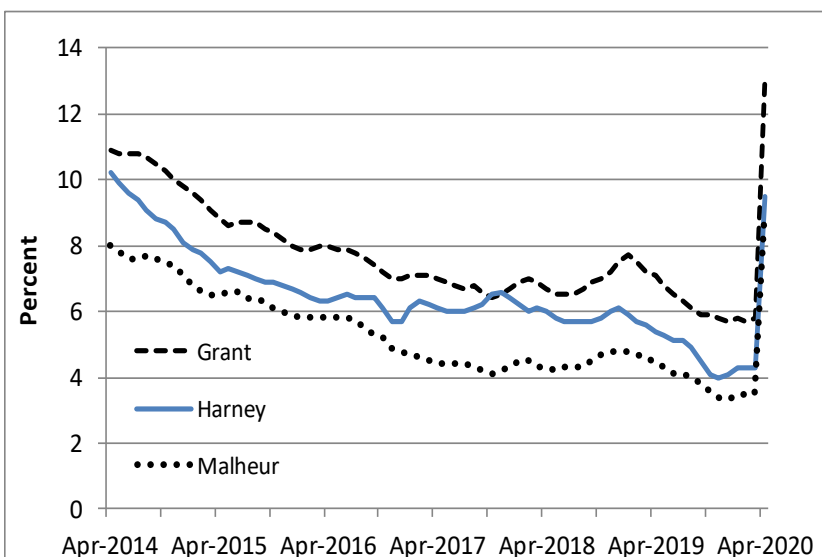
Malheur County employment decreased by an estimated 620 jobs over the year. The private sector dropped 510 jobs led by losses in leisure and hospitality, education and health services, and professional and business services. Gains were led by manufacturing. The public sector lost 110 jobs with a loss in local government overcoming gains in state and federal government.

Notable Industry Gains and Losses

Over-the-Year Employment Change from April 2019

	Grant	Harney	Malheur
↑	Wholesale Trade (+10)	Wholesale Trade (+10)	Manufacturing (+90)
	Federal Government (+10)	Other Services (+10)	Mining/Logging/Construction (+40)
↓	Leisure/Hospitality (-50)	Local Government (-80)	Leisure/Hospitality (-250)
	Construction (-20)	Leisure/Hospitality (-70)	Local Government (-150)
	Private Education/Health Services (-20)	Goods-producing (-40)	Private Education/Health Services (-140)
	Financial Activities (-10)	Financial Activities (-10)	Professional/Business Services (-120)
	Professional/Business Services (-10)	Professional/Business Services (-10)	Transportation/Warehousing/Utilities (-50)
	State Government (-10)	Private Education/Health Services (-10)	

Unemployment rate spikes sharply up due to COVID-19



Want to learn more about the Oregon economy?

Read our blog at: oregonemployment.blogspot.com/

Follow us on Twitter at: [Twitter.com/OED_Research](https://twitter.com/OED_Research)

Visit our web site at: QualityInfo.org

Visit our subscription service at: qualityinfo.org/p-sofrm

For more economic or labor market data about Grant, Harney or Malheur counties, contact:

Tony Wendel, Workforce Analyst

Desk: 541-276-9050 ext. 232 Cell: 541-667-7027

E-mail: Tony.A.Wendel@oregon.gov

Chris Rich, Regional Economist

Desk: 541-963-7111 ext. 226 Cell: 541-519-0315

E-mail: Christopher.M.Rich@oregon.gov

Want to be added to the monthly distribution list?

E-mail me at: Tony.A.Wendel@oregon.gov