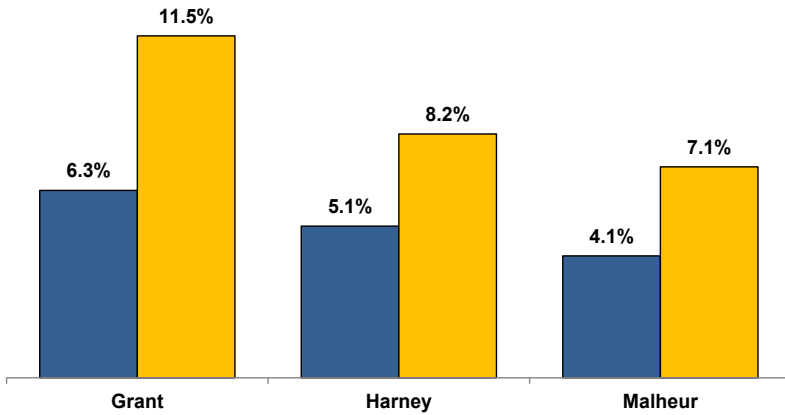


Unemployment Rates (Seasonally Adjusted)

■ July 2019 ■ July 2020



Unemployment Rate News

Malheur County's seasonally adjusted unemployment rate for July 2020 was 7.1 percent, while Harney County came in at 8.2 percent and Grant County at 11.5 percent. Malheur and Harney counties' rates were below Oregon's statewide rate of 10.4 percent and the national rate of 10.2 percent.

Malheur County's rate ranked third lowest among Oregon's 36 counties for the month while Harney County's ranked eighth and Grant County's sat at 31st.

All three counties had higher seasonally adjusted unemployment rates in July 2020 than the previous July due to the effects of COVID-19.

Malheur County (+3.0 percentage points) ranked fourth among Oregon's counties for smallest over-the-year change while Harney County (+3.1) ranked fifth and Grant County (+5.2) ranked 15th.

Nonfarm Employment Change

July 2019 to July 2020

Grant County lost an estimated 140 jobs over the year. The private sector dropped 60 jobs led by a loss in leisure and hospitality. Information and professional and business services were the only industries to add jobs. The public sector lost 80 jobs with losses in state, local, and federal government.

Harney County dropped an estimated 190 jobs over the year. The private sector lost 160 jobs with losses led by leisure and hospitality, goods-producing, retail trade, and other services. No industries added jobs. The public sector lost 30 jobs, all in local government.

Malheur County employment decreased by an estimated 370 jobs over the year. The private sector dropped 430 jobs led by losses in leisure and hospitality, education and health services, and professional and business services. Gains were led by retail trade and manufacturing. The public sector added 60 jobs with gains in state and local government.

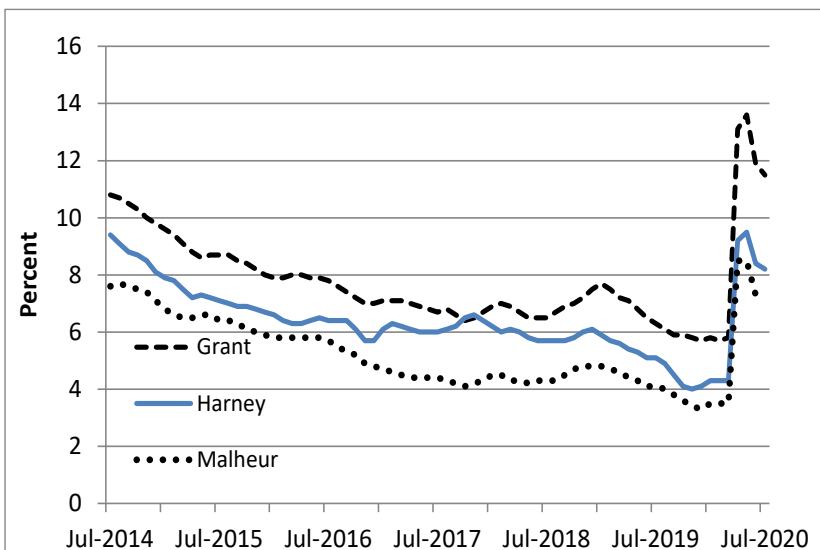
Notable Industry Gains and Losses

Over-the-Year Employment Change from July 2019



Grant	Harney	Malheur
Information (+10)		Retail Trade (+50)
Professional/Business Services (+10)		Manufacturing (+30)
State Government (-40)	Leisure/Hospitality (-60)	Leisure/Hospitality (-260)
Local Government (-30)	Local Government (-30)	Private Education/Health Services (-110)
Leisure/Hospitality (-20)	Goods-producing (-20)	Professional/Business Services (-80)
Financial Activities (-10)	Retail Trade (-20)	Other Services (-30)
Construction (-10)	Other Services (-20)	Information (-20)
Other Services (-10)	Wholesale Trade (-10)	Financial Activities (-10)
Manufacturing (-10)	Financial Activities (-10)	

Unemployment rate dropping after sharp rise due to COVID-19



Want to learn more about the Oregon economy?

Read our blog at: oregonemployment.blogspot.com/

Follow us on Twitter at: [Twitter.com/OED_Research](https://twitter.com/OED_Research)

Visit our web site at: QualityInfo.org

Visit our subscription service at: qualityinfo.org/p-sofrm

For more economic or labor market data about Grant, Harney or Malheur counties, contact:

Tony Wendel, Workforce Analyst

Desk: 541-276-9050 ext. 232 Cell: 541-667-7027

E-mail: Tony.A.Wendel@oregon.gov

Chris Rich, Regional Economist

Desk: 541-963-7111 ext. 226 Cell: 541-519-0315

E-mail: Christopher.M.Rich@oregon.gov

Want to be added to the monthly distribution list?

E-mail me at: Tony.A.Wendel@oregon.gov