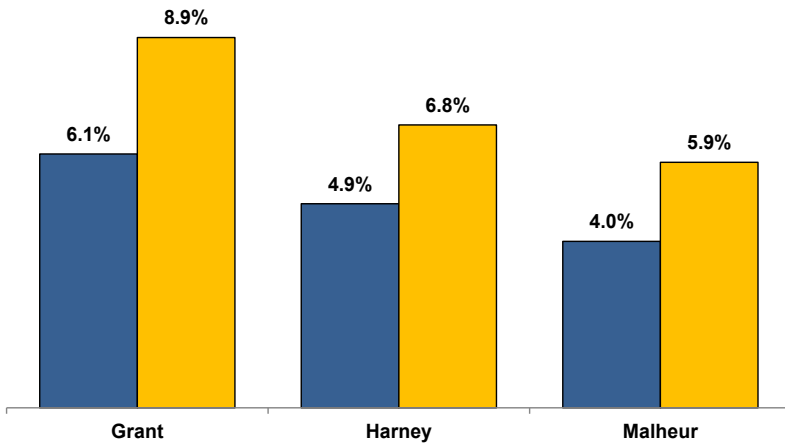


Unemployment Rates (Seasonally Adjusted)

■ August 2019 ■ August 2020



Unemployment Rate News

Malheur County's seasonally adjusted unemployment rate for August 2020 was 5.9 percent, while Harney County came in at 6.8 percent and Grant County at 8.9 percent. Malheur and Harney counties' rates were below Oregon's statewide rate of 7.7 percent and the national rate of 8.4 percent.

Malheur County's rate ranked fourth lowest among Oregon's 36 counties for the month while Harney County's ranked in a four-way tie for 12th and Grant County's tied for 31st.

All three counties had higher seasonally adjusted unemployment rates in August 2020 than the previous August due to the effects of COVID-19.

Harney and Malheur counties (+1.9 percentage points) ranked in a three-way tie for fourth among Oregon's counties for smallest over-the-year change while Grant County (+2.8) ranked in a four-way tie for 12th.

Nonfarm Employment Change

August 2019 to August 2020

Grant County lost an estimated 130 jobs over the year. The private sector dropped 50 jobs led by losses in leisure and hospitality and education and health services. Information and transportation, warehousing, and utilities were the only industries to add jobs. The public sector lost 80 jobs with losses in state, local, and federal government.

Harney County dropped an estimated 160 jobs over the year. The private sector lost 150 jobs with losses led by leisure and hospitality. No industries added jobs. The public sector lost 10 jobs with a loss in local government overcoming gains in state and federal government.

Malheur County employment decreased by an estimated 600 jobs over the year. The private sector dropped 440 jobs led by losses in leisure and hospitality, education and health services, and professional and business services. Gains were led by retail trade. The public sector dropped 160 jobs with a loss in local government overcoming gains in state and federal government.

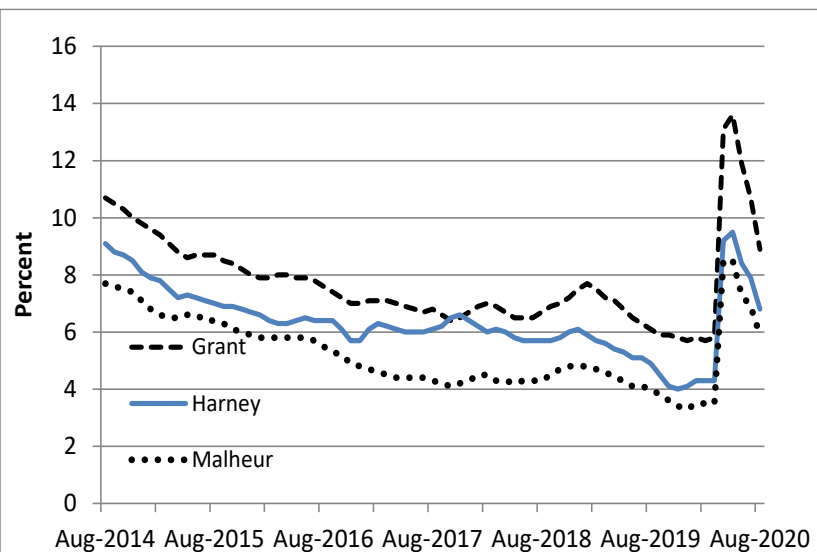
Notable Industry Gains and Losses

Over-the-Year Employment Change from August 2019



Grant	Harney	Malheur
Information (+10)	Federal Government (+10)	Retail Trade (+60)
Transportation/Warehousing/Utilities (+10)	State Government (+10)	State Government (+40)
State Government (-40)	Leisure/Hospitality (-60)	Leisure/Hospitality (-250)
Local Government (-30)	Local Government (-30)	Local Government (-220)
Leisure/Hospitality (-20)	Retail Trade (-20)	Private Education/Health Services (-130)
Private Education/Health Services (-20)	Professional/Business Services (-20)	Professional/Business Services (-60)
Other Services (-10)	Private Education/Health Services (-20)	Information (-20)
Retail Trade (-10)	Other Services (-10)	Other Services (-20)
Mining/Logging (-10)		

Unemployment rate dropping after sharp rise due to COVID-19



Want to learn more about the Oregon economy?

Read our blog at: oregonemployment.blogspot.com/

Follow us on Twitter at: [Twitter.com/OED_Research](https://twitter.com/OED_Research)

Visit our web site at: QualityInfo.org

Visit our subscription service at: qualityinfo.org/p-sofrm

For more economic or labor market data about Grant, Harney or Malheur counties, contact:

Tony Wendel, Workforce Analyst

Desk: 541-276-9050 ext. 232 Cell: 541-667-7027

E-mail: Tony.A.Wendel@oregon.gov

Chris Rich, Regional Economist

Desk: 541-963-7111 ext. 226 Cell: 541-519-0315

E-mail: Christopher.M.Rich@oregon.gov

Want to be added to the monthly distribution list?

E-mail me at: Tony.A.Wendel@oregon.gov