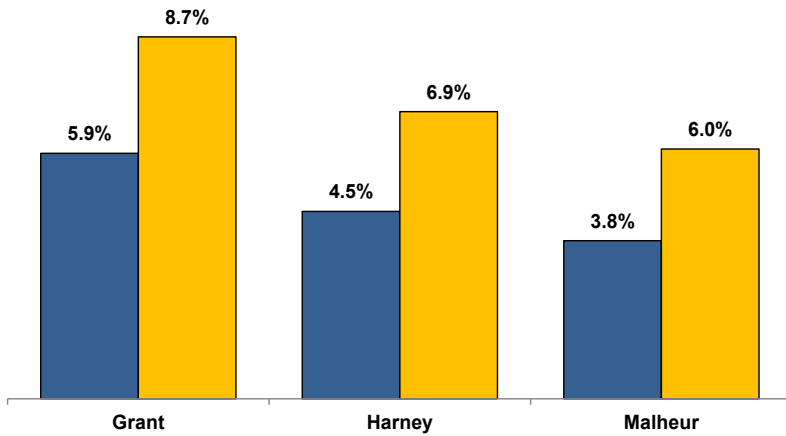


Unemployment Rates (Seasonally Adjusted)

■ September 2019 ■ September 2020



Unemployment Rate News

Malheur County's seasonally adjusted unemployment rate for September 2020 was 6.0 percent, while Harney County came in at 6.9 percent and Grant County at 8.7 percent. Malheur and Harney counties' rates were below Oregon's statewide rate of 8.0 percent and the national rate of 7.9 percent.

Malheur County's rate ranked fourth lowest among Oregon's 36 counties for the month while Harney County's ranked in a tie for 13th and Grant County's tied for 30th.

All three counties had higher seasonally adjusted unemployment rates in September 2020 than the previous September due to the effects of COVID-19.

Malheur County (+2.2 percentage points) ranked fifth among Oregon's counties for smallest over-the-year change while Harney County (+2.4) ranked in a tie for sixth and Grant County (+2.8) ranked in a three-way tie for 10th.

Nonfarm Employment Change

September 2019 to September 2020

Grant County lost an estimated 110 jobs over the year. The private sector dropped 40 jobs led by losses in leisure and hospitality and mining and logging. Wholesale trade; Information; and transportation, warehousing, and utilities added jobs. The public sector lost 70 jobs with losses in state, local, and federal government.

Harney County dropped an estimated 120 jobs over the year. The private sector lost 110 jobs with losses led by leisure and hospitality. No industries added jobs. The public sector lost 10 jobs with a loss in local government overcoming gains in state and federal government.

Malheur County employment decreased by an estimated 520 jobs over the year. The private sector dropped 450 jobs led by losses in leisure and hospitality and education and health services. The only industry to add jobs was retail trade. The public sector dropped 70 jobs with a loss in local government overcoming gains in state and federal government.

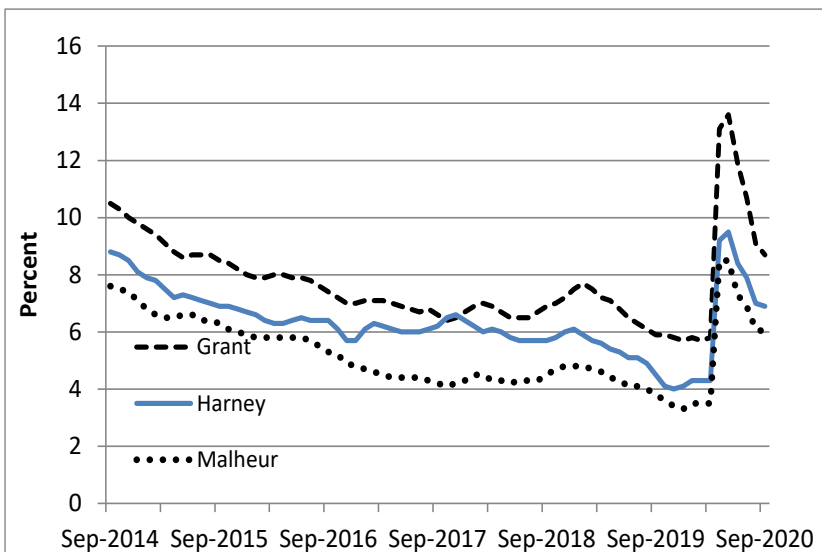
Notable Industry Gains and Losses

Over-the-Year Employment Change from September 2019



Grant	Harney	Malheur
Wholesale Trade (+10)	Federal Government (+10)	Retail Trade (+70)
Information (+10)	State Government (+10)	Federal Government (+30)
Transportation/Warehousing/Utilities (+10)		State Government (+20)
State Government (-30)	Leisure/Hospitality (-50)	Leisure/Hospitality (-240)
Local Government (-30)	Local Government (-30)	Private Education/Health Services (-120)
Leisure/Hospitality (-20)	Retail Trade (-20)	Local Government (-120)
Mining/Logging (-20)	Other Services (-20)	Other Services (-30)
Private Education/Health Services (-10)	Professional/Business Services (-10)	Information (-20)
Other Services (-10)	Private Education/Health Services (-10)	Financial Activities (-10)

Unemployment rate dropping after sharp rise due to COVID-19



Want to learn more about the Oregon economy?

Read our blog at: oregonemployment.blogspot.com/

Follow us on Twitter at: [Twitter.com/OED_Research](https://twitter.com/OED_Research)

Visit our web site at: QualityInfo.org

Visit our subscription service at: qualityinfo.org/p-sofrm

For more economic or labor market data about Grant, Harney or Malheur counties, contact:

Tony Wendel, Workforce Analyst

Desk: 541-276-9050 ext. 232 Cell: 541-667-7027

E-mail: Tony.A.Wendel@oregon.gov

Chris Rich, Regional Economist

Desk: 541-963-7111 ext. 226 Cell: 541-519-0315

E-mail: Christopher.M.Rich@oregon.gov

Want to be added to the monthly distribution list?

E-mail me at: Tony.A.Wendel@oregon.gov