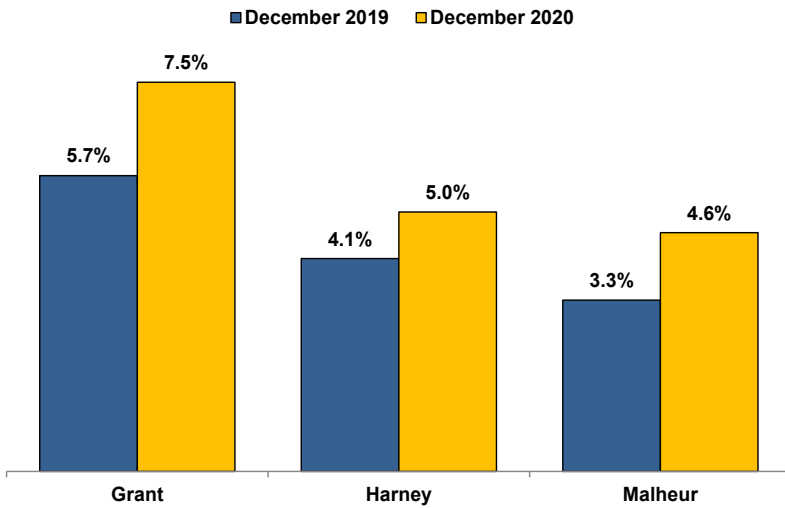


Unemployment Rates (Seasonally Adjusted)



Unemployment Rate News

Malheur County's seasonally adjusted unemployment rate for December 2020 was 4.6%, while Harney County came in at 5.0% and Grant County at 7.5%. Malheur and Harney counties' rates were below Oregon's statewide rate of 6.4% and the national rate of 6.7%.

Malheur County's rate ranked sixth lowest among Oregon's 36 counties for the month while Harney County's ranked eighth and Grant County's sat at 33rd.

All three counties had higher seasonally adjusted unemployment rates in December 2020 than the previous December due to the effects of COVID-19.

Harney County (+0.9 percentage point) ranked fourth among Oregon's counties for smallest over-the-year change while Malheur County (+1.3) ranked in a tie for seventh and Grant County (+1.8) sat in a tie for 10th.

Nonfarm Employment Change

December 2019 to December 2020

Grant County lost an estimated 70 jobs over the year. The private sector dropped 30 jobs with small losses spread across several industries overcoming gains in retail trade and information. The public sector lost 40 jobs with losses in local and federal government overcoming a gain in state government.

Harney County dropped an estimated 40 jobs over the year. The private sector lost 60 jobs with small losses spread across several industries. No industries added jobs. The public sector added 20 jobs with gains in federal and state government overcoming a loss in local government.

Malheur County employment decreased by an estimated 200 jobs over the year. The private sector dropped 210 jobs led by losses in education and health services, leisure and hospitality, and professional and business services. Retail trade was the only industry to add jobs. The public sector added 10 jobs with gains in state and federal government overcoming a loss in local government.

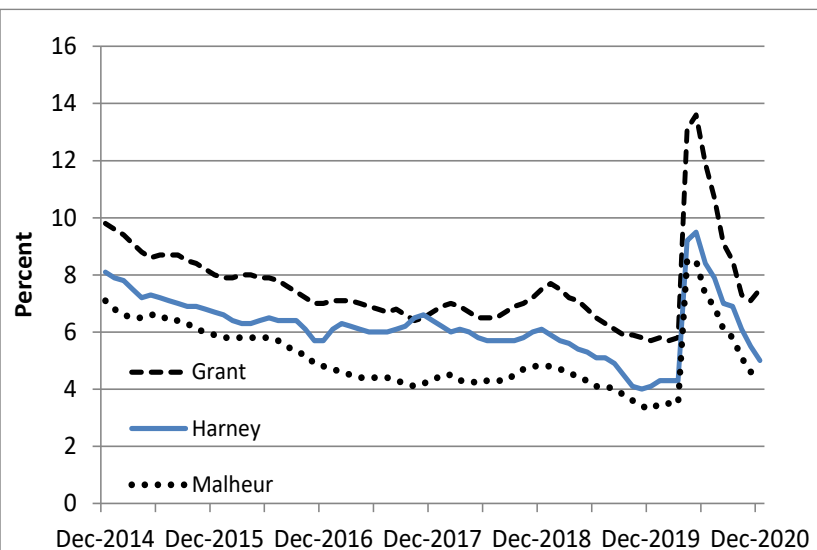
Notable Industry Gains and Losses

Over-the-Year Employment Change from December 2019



Grant	Harney	Malheur
Retail Trade (+20)	Federal Government (+20)	Retail Trade (+130)
State Government (+20)	State Government (+10)	State Government (+70)
Information (+10)		Federal Government (+40)
Local Government (-50)	Private Education/Health Services (-20)	Local Government (-100)
Construction (-10)	Transportation/Warehousing/Utilities (-10)	Private Education/Health Services (-90)
Manufacturing (-10)	Financial Activities (-10)	Professional/Business Services (-80)
Professional/Business Services (-10)	Leisure/Hospitality (-10)	Leisure/Hospitality (-80)
Mining/Logging (-10)	Retail Trade (-10)	Information (-40)
Leisure/Hospitality (-10)		

Unemployment rate dropping after sharp rise due to COVID-19



Want to learn more about the Oregon economy?

Read our blog at: oregonemployment.blogspot.com/

Follow us on Twitter at: [Twitter.com/OED_Research](https://twitter.com/OED_Research)

Visit our web site at: QualityInfo.org

Visit our subscription service at: qualityinfo.org/p-sofrm

For more economic or labor market data about Grant, Harney or Malheur counties, contact:

Tony Wendel, Workforce Analyst

Desk: 541-276-9050 ext. 232 Cell: 541-667-7027

E-mail: Tony.A.Wendel@oregon.gov

Chris Rich, Regional Economist

Desk: 541-963-7111 ext. 226 Cell: 541-519-0315

E-mail: Christopher.M.Rich@oregon.gov

Want to be added to the monthly distribution list?

E-mail me at: Tony.A.Wendel@oregon.gov