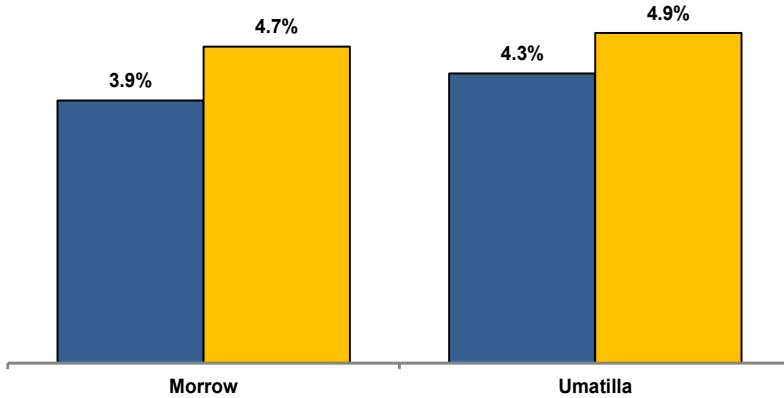


## Unemployment Rates (Seasonally Adjusted)

■ March 2024 ■ March 2025



## Unemployment Rate News

Morrow County's seasonally adjusted unemployment rate for March 2025 was 4.7%, while Umatilla County came in at 4.9%. Both counties' rates were above Oregon's statewide rate of 4.6% and the national rate of 4.2%.

Both counties' rates were above their March 2024 rates.

Umatilla County's March 2025 rate tied for its third lowest March rate since comparable statistics began in 1990. Umatilla County had lower March rates in 2024, 2022, and 2020. Morrow County's March rate was its eight lowest March rate over the same period.

## Nonfarm Employment Change

March 2024 to March 2025

Morrow County lost an estimated 10 jobs over the year. The private sector increased by 200 jobs. Construction, manufacturing, and private education and health services saw the largest gains. Losses were confined to transportation, warehousing, and utilities. The public sector dropped 210 jobs with losses in local government and federal government overwhelming a small gain in state government.

Umatilla County employment added an estimated 150 jobs over the year. The private sector increased by 230 jobs. Private education and health services; professional and business services; mining, logging, and construction; and leisure and hospitality led gains. Losses were led by manufacturing and retail trade. The public sector dropped 80 jobs with losses in local education, federal government, and Indian tribal overcoming gains in state government and other local government.

## Notable Industry Gains and Losses

Over-the-Year Employment Change from March 2024

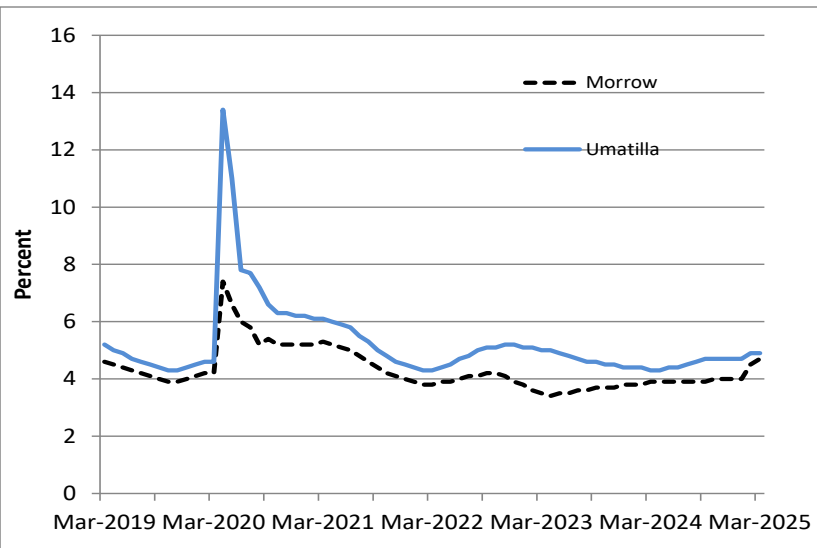
## Morrow

Construction (+30)  
 Manufacturing (+30)  
 Private Education/Health Services (+30)  
 Retail Trade (+20)  
 Wholesale Trade (+10)  
 Leisure/Hospitality (+10)  
 Local Government (-210)  
 Transportation/Warehousing/Utilities (-20)  
 Federal Government (-10)

## Umatilla

Private Education/Health Services (+140)  
 Professional/Business Services (+110)  
 Mining/Logging/Construction (+60)  
 Leisure/Hospitality (+60)  
 Wholesale Trade (+50)  
 Information (+50)  
 Manufacturing (-140)  
 Local Education (-120)  
 Retail Trade (-70)  
 Other Services (-20)

## Unemployment rates rise but remain comparatively low



## Want to learn more about the Oregon economy?

Follow us on X at: [x.com/OED\\_Research](https://x.com/OED_Research)

Visit our web site at: [QualityInfo.org](https://QualityInfo.org)

Visit our subscription service at: [qualityinfo.org/subscribe](https://qualityinfo.org/subscribe)

For more economic or labor market data about Morrow or Umatilla counties, contact:

Tony Wendel, Regional Economist

Cell: 541-667-7027

E-mail: [Tony.A.Wendel@employ.oregon.gov](mailto:Tony.A.Wendel@employ.oregon.gov)

Want to be added to the monthly distribution list?

E-mail me at: [Tony.A.Wendel@employ.oregon.gov](mailto:Tony.A.Wendel@employ.oregon.gov)