

FOR IMMEDIATE RELEASE: April 22, 2025

CONTACT INFORMATION:

Brian Rooney, Regional Economist  
brian.t.rooney@employ.oregon.gov  
(541) 359-9546

## **Employment in Douglas County**

### **Douglas County Employers Drop 40 Jobs in March**

Douglas County's seasonally adjusted payroll employment decreased by 40 jobs in March after gains of 40 in February and 10 in January.

In the not seasonally adjusted private-sector industries in March, there were relatively large gains in private education and health services (20) and leisure and hospitality (20). There were relatively large losses in mining and logging (-20) and transportation, warehousing, and utilities (-20).

Government added 10 jobs in March from gains in federal government (20), Indian tribal (10), and noneducation local government (10). These was a loss of 30 in local education.

When comparing March 2025 with March 2024, total nonfarm employment decreased by 100 jobs, or -0.3%. Private-sector over-the-year gains were seen in private education and health services (100); transportation, warehousing, and utilities (40); and other services (30). There were relatively large losses in retail trade (-170), mining and logging (-80), manufacturing (-80), professional and business services (-70), and financial activities (-40).

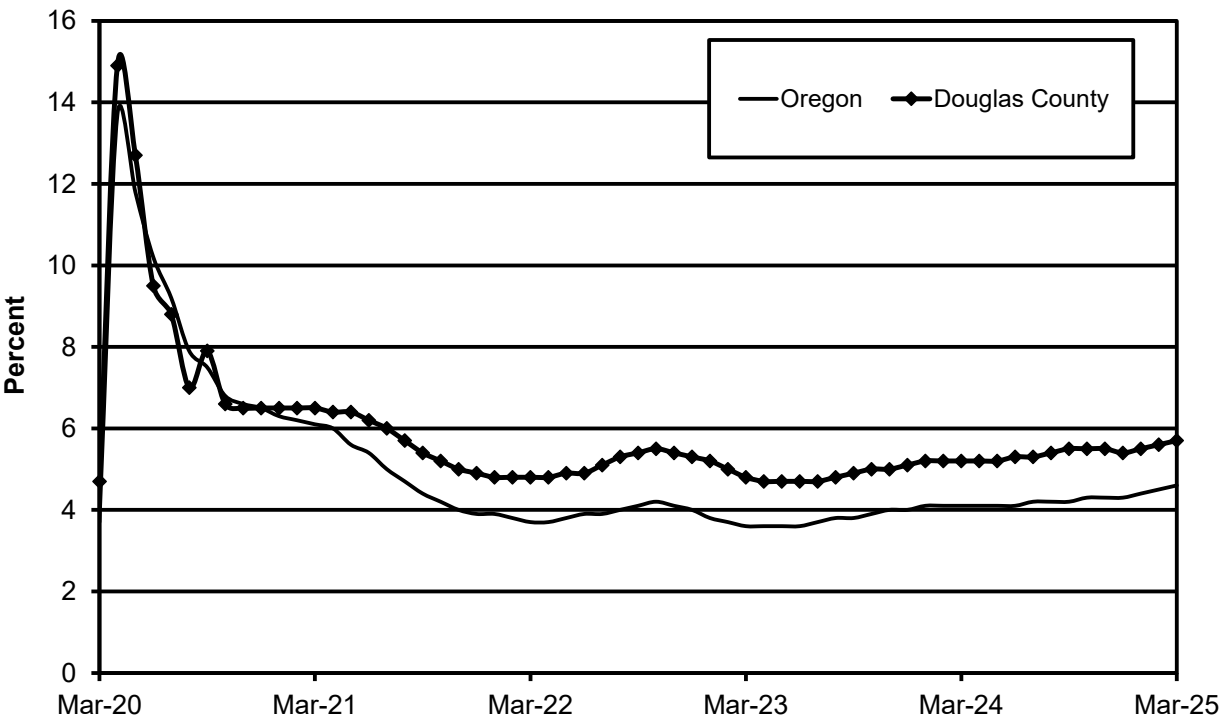
Government added 210 jobs due to gains in noneducation local government (100), local education (70), Indian tribal (30), and federal government (10).

Douglas County's seasonally adjusted unemployment rate edged up to 5.7% in March compared with a revised 5.6% in February. The rate is up from 5.2% in March 2024. Douglas County's record low unemployment rate was set in November 2019 at 4.4%. The Oregon seasonally adjusted March rate was 4.6% and the U.S. rate was 4.2%.

### **Next Press Releases**

The Oregon Employment Department plans to release the April county and metropolitan area unemployment rates and employment survey data on Tuesday, May 20<sup>th</sup> and the statewide unemployment rate and employment survey data for April on Wednesday, May 14<sup>th</sup>.

# Seasonally Adjusted Unemployment Rates





Workforce &amp; Economic Research Division

QualityInfo.org

April 22, 2025

### Douglas County Current Labor Force and Industry Employment

|   | --Change From-- |                  |               |                  |               |
|---|-----------------|------------------|---------------|------------------|---------------|
|   | March<br>2025   | February<br>2025 | March<br>2024 | February<br>2025 | March<br>2024 |
| <b>Labor Force Status</b>                             |                 |                  |               |                  |               |
| Civilian labor force                                  | 46,526          | 46,628           | 46,561        | -102             | -35           |
| Unemployed  | 2,950           | 3,006            | 2,581         | -56              | 369           |
| Unemployment rate                                     | 6.3%            | 6.4%             | 5.5%          | -0.1             | 0.8           |
| <i>Unemployment rate (seasonally adjusted)</i>        | 5.7%            | 5.6%             | 5.2%          | 0.1              | 0.5           |
| Employed  | 43,576          | 43,622           | 43,980        | -46.0            | -404.0        |
| <b>Nonfarm Payroll Employment</b>                     |                 |                  |               |                  |               |
| Total nonfarm employment                              | 38,320          | 38,340           | 38,420        | -20              | -100          |
| <i>Total nonfarm employment (seasonally adjusted)</i> | 38,630          | 38,670           | 38,730        | -40              | -100          |
| Total private   | 30,320          | 30,350           | 30,630        | -30              | -310          |
| Mining, logging, and construction                     | 2,460           | 2,480            | 2,560         | -20              | -100          |
| Mining and logging                                    | 780             | 800              | 860           | -20              | -80           |
| Construction  | 1,680           | 1,680            | 1,700         | 0                | -20           |
| Manufacturing   | 4,560           | 4,550            | 4,640         | 10               | -80           |
| Durable goods   | 4,060           | 4,060            | 4,150         | 0                | -90           |
| Wood product manufacturing                            | 2,660           | 2,660            | 2,720         | 0                | -60           |
| Nondurable goods                                      | 500             | 490              | 490           | 10               | 10            |
| Trade, transportation, and utilities                  | 6,920           | 6,960            | 7,070         | -40              | -150          |
| Wholesale trade                                       | 840             | 850              | 860           | -10              | -20           |
| Retail trade  | 4,610           | 4,620            | 4,780         | -10              | -170          |
| Food and beverage retailers                           | 1,070           | 1,070            | 1,140         | 0                | -70           |
| General merchandise retailers                         | 1,110           | 1,120            | 1,130         | -10              | -20           |
| Transportation, warehousing, and utilities            | 1,470           | 1,490            | 1,430         | -20              | 40            |
| Information   | 340             | 340              | 330           | 0                | 10            |
| Financial activities                                  | 1,290           | 1,300            | 1,330         | -10              | -40           |
| Professional and business services                    | 2,890           | 2,900            | 2,960         | -10              | -70           |
| Private education and health services                 | 6,910           | 6,890            | 6,810         | 20               | 100           |
| Leisure and hospitality                               | 3,660           | 3,640            | 3,670         | 20               | -10           |
| Food services and drinking places                     | 2,880           | 2,870            | 2,900         | 10               | -20           |
| Other services  | 1,290           | 1,290            | 1,260         | 0                | 30            |
| Government  | 8,000           | 7,990            | 7,790         | 10               | 210           |
| Federal government                                    | 1,440           | 1,420            | 1,430         | 20               | 10            |
| State government                                      | 700             | 700              | 700           | 0                | 0             |
| Local government                                      | 5,860           | 5,870            | 5,660         | -10              | 200           |
| Indian tribal   | 1,140           | 1,130            | 1,110         | 10               | 30            |
| Local education                                       | 3,130           | 3,160            | 3,060         | -30              | 70            |
| Local government excluding education and tribal       | 1,590           | 1,580            | 1,490         | 10               | 100           |

The most recent month is preliminary, the prior month is revised. Prepared in cooperation with the U.S. Department of Labor, Bureau of Labor Statistics.

Civilian labor force includes employed and unemployed individuals 16 years and older by place of residence.

Employed includes payroll employment, self-employed, unpaid family workers, domestics, agriculture, and labor disputants.

Unemployment rate is calculated by dividing unemployed by civilian labor force.

Nonfarm Payroll Employment: Data are by place of work and cover full- and part-time employees who worked or received pay for the pay period that includes the 12th of the month. The data exclude the self-employed, volunteers, unpaid family workers, and domestics.

The Oregon Employment Department and the U.S. Bureau of Labor Statistics (BLS) work cooperatively to develop and publish monthly payroll employment and labor force data for Oregon's metropolitan areas and counties. The estimates of monthly job gains and losses are based on a survey of businesses. The estimates of unemployment are based on a survey of households and other sources.

The Oregon Employment Department payroll employment estimates are revised quarterly using information from unemployment insurance tax records. All department publications use data from this *official Oregon series* unless noted.

The department also makes the BLS-produced nonfarm payroll employment series for metropolitan areas available. These are revised annually by BLS.

You can subscribe to receive notification of new articles and publications from QualityInfo.org. To subscribe, go to [www.qualityinfo.org/subscribe](http://www.qualityinfo.org/subscribe), enter your email address and click Sign In. In the Publication section, click on the + sign next to a report type category and then click on the geography(s) you are interested in. Take some time to browse the other publications on the page and see if there are some you'd like to receive an email notification for. You can receive notifications on a daily, weekly, or monthly schedule – whichever is most convenient for you. You can change your preferences – or unsubscribe – at any time.

The pdf version of the news release, including tables and graphs, can be found at [www.qualityinfo.org/press-release/](http://www.qualityinfo.org/press-release/). To obtain the data in other formats such as in Excel, visit QualityInfo.org, select Tools, and choose LAUS or CES from the dropdown menu. To request the press release as a Word document, contact the person shown at the top of this press release.

To file an Unemployment Insurance claim, visit our online claims system or call our contact centers, where Employment Department staff are ready to help by phone, at 1-877-FILE-4-UI (1-877-345-3484). For help finding jobs and training resources, go to: [www.WorkSourceOregon.org](http://www.WorkSourceOregon.org)

The Oregon Employment Department (OED) is an equal opportunity agency. Everyone has a right to use OED programs and services. OED provides free help. Some examples are: Sign language and spoken language interpreters, written materials in other languages, braille, large print, audio and other formats. If you need help, please call 971-673-6400. TTY users call 711. You can also ask for help at [OED\\_Communications@employ.oregon.gov](mailto:OED_Communications@employ.oregon.gov).

El Departamento de Empleo de Oregon (OED) es una agencia de igualdad de oportunidades. El OED proporciona ayuda gratuita para que usted pueda utilizar nuestros servicios. Algunos ejemplos son intérpretes de lengua de señas e idiomas hablados, materiales escritos en otros idiomas, letra grande, audio y otros formatos. Para obtener ayuda, por favor llame al 503-947-1444. Usuarios de TTY pueden llamar al 711. También puede enviar un correo electrónico a [OED\\_Communications@employ.oregon.gov](mailto:OED_Communications@employ.oregon.gov).

###