

FOR IMMEDIATE RELEASE: Jan. 27, 2026

CONTACT INFORMATION:

Brian Rooney, Regional Economist
brian.t.rooney@employ.oregon.gov
(541) 359-9546

Employment in Douglas County

Douglas County's Unemployment Rate Held Steady at 6.4% in December

Douglas County's seasonally adjusted unemployment rate was unchanged at 6.4% in December compared to the revised November rate. Over the year, Douglas County's seasonally adjusted unemployment rate is up from 5.4% in December 2024. The Oregon rate was 5.2% and the U.S. rate was 4.4%.

Douglas County's seasonally adjusted payroll employment decreased by 70 jobs in December after a gain of 30 in November and a loss of 200 in October.

In the not seasonally adjusted private-sector industries in December, there were gains in private education and health services (40) and retail trade (30). There were losses in professional and business services (-30) and construction (-20).

Government decreased by 150 in the month of December from losses in local education (-160) and federal government (-10) that were countered by a gain of 20 in other local government.

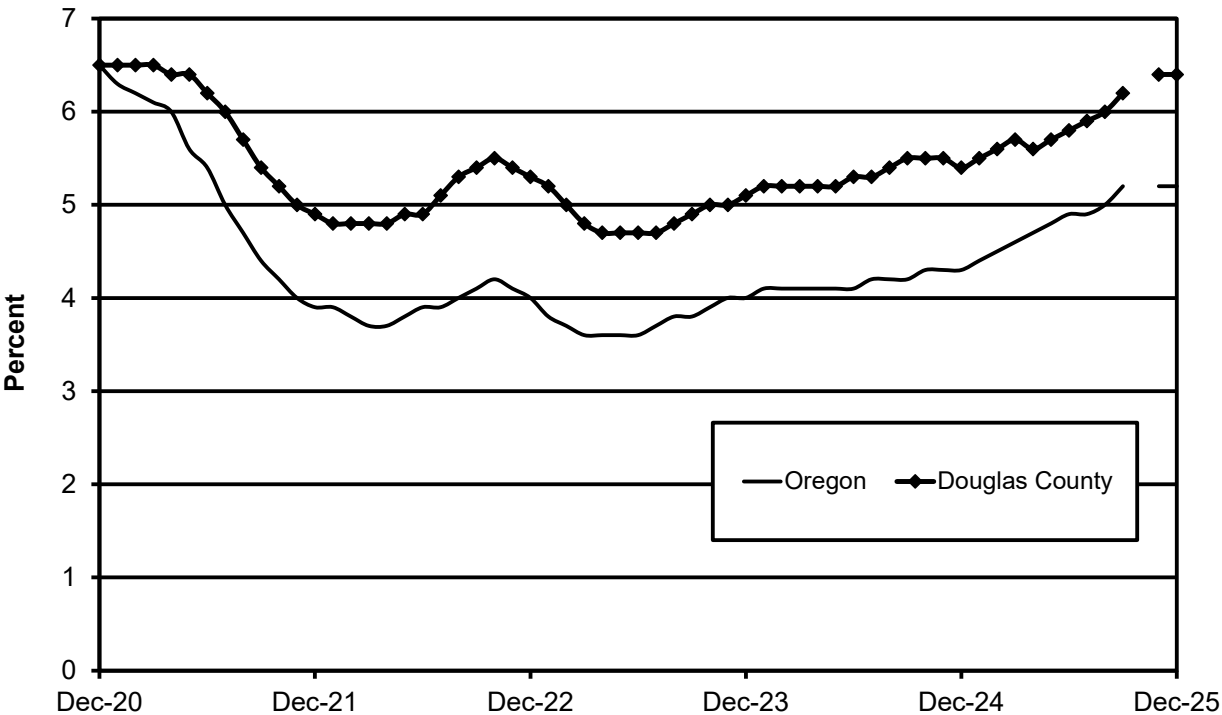
When comparing December 2025 with December 2024, seasonally adjusted total nonfarm employment increased by 40 jobs, or 0.1%. There were relatively large private-sector over-the-year gains in private education and health services (190) and professional and business services (100). There were relatively large losses in manufacturing (-150) and retail trade (-140).

Government rose 30 jobs over the year in December due to gains in Indian tribal (20) and other local government (20) that were countered by a loss of 10 in federal government.

Next Press Releases

We are awaiting notification from the Bureau of Labor Statistics regarding publication dates for the rest of the year and will update our [schedule of future releases](#) as dates become available.

Seasonally Adjusted Unemployment Rates





Workforce & Economic Research Division

QualityInfo.org

January 27, 2026

Douglas County Current Labor Force and Industry Employment

	--Change From--				
	December 2025	November 2025	December 2024	November 2025	December 2024
Labor Force Status					
Civilian labor force	46,495	46,792	46,060	-297	435
Unemployed	2,889	2,741	2,472	148	417
Unemployment rate	6.2%	5.9%	5.4%	0.3	0.8
<i>Unemployment rate (seasonally adjusted)</i>	<i>6.4%</i>	<i>6.4%</i>	<i>5.4%</i>	<i>0.0</i>	<i>1.0</i>
Employed	43,606	44,051	43,588	-445	18
Nonfarm Payroll Employment					
Total nonfarm employment	38,450	38,590	38,410	-140	40
<i>Total nonfarm employment (seasonally adjusted)</i>	<i>38,410</i>	<i>38,480</i>	<i>38,370</i>	<i>-70</i>	<i>40</i>
Total private	30,550	30,540	30,540	10	10
Mining, logging, and construction	2,530	2,550	2,530	-20	0
Mining and logging	820	820	810	0	10
Construction	1,710	1,730	1,720	-20	-10
Manufacturing	4,250	4,270	4,400	-20	-150
Durable goods	3,820	3,840	3,930	-20	-110
Wood product manufacturing	2,530	2,550	2,580	-20	-50
Nondurable goods	430	430	470	0	-40
Trade, transportation, and utilities	6,960	6,920	7,130	40	-170
Wholesale trade	890	890	890	0	0
Retail trade	4,540	4,510	4,680	30	-140
Food and beverage retailers	1,070	1,070	1,100	0	-30
General merchandise retailers	1,170	1,160	1,180	10	-10
Transportation, warehousing, and utilities	1,530	1,520	1,560	10	-30
Information	310	310	340	0	-30
Financial activities	1,320	1,320	1,310	0	10
Professional and business services	2,970	3,000	2,870	-30	100
Private education and health services	7,330	7,290	7,140	40	190
Leisure and hospitality	3,610	3,620	3,570	-10	40
Food services and drinking places	2,880	2,880	2,840	0	40
Other services	1,270	1,260	1,250	10	20
Government	7,900	8,050	7,870	-150	30
Federal government	1,440	1,450	1,450	-10	-10
State government	700	700	700	0	0
Local government	5,760	5,900	5,720	-140	40
Indian tribal	1,140	1,140	1,120	0	20
Local education	3,040	3,200	3,040	-160	0
Local government excluding education and tribal	1,580	1,560	1,560	20	20

The most recent month is preliminary, the prior month is revised. Prepared in cooperation with the U.S. Department of Labor, Bureau of Labor Statistics.

Civilian labor force includes employed and unemployed individuals 16 years and older by place of residence.

Employed includes payroll employment, self-employed, unpaid family workers, domestics, agriculture, and labor disputants.

Unemployment rate is calculated by dividing unemployed by civilian labor force.

Nonfarm Payroll Employment: Data are by place of work and cover full- and part-time employees who worked or received pay for the pay period that includes the 12th of the month. The data exclude the self-employed, volunteers, unpaid family workers, and domestics.

The Oregon Employment Department and the U.S. Bureau of Labor Statistics (BLS) work cooperatively to develop and publish monthly payroll employment and labor force data for Oregon's metropolitan areas and counties. The estimates of monthly job gains and losses are based on a survey of businesses. The estimates of unemployment are based on a survey of households and other sources.

The Oregon Employment Department payroll employment estimates are revised quarterly using information from unemployment insurance tax records. All department publications use data from this *official Oregon series* unless noted.

The department also makes the BLS-produced nonfarm payroll employment series for metropolitan areas available. These are revised annually by BLS.

You can subscribe to receive notification of new articles and publications from QualityInfo.org. To subscribe, go to www.qualityinfo.org/subscribe, enter your email address and click Sign In. In the Publication section, click on the + sign next to a report type category and then click on the geography(s) you are interested in. Take some time to browse the other publications on the page and see if there are some you'd like to receive an email notification for. You can receive notifications on a daily, weekly, or monthly schedule – whichever is most convenient for you. You can change your preferences – or unsubscribe – at any time.

The pdf version of the news release, including tables and graphs, can be found at www.qualityinfo.org/press-release/. To obtain the data in other formats such as in Excel, visit QualityInfo.org, select Tools, and choose LAUS or CES from the dropdown menu. To request the press release as a Word document, contact the person shown at the top of this press release.

To file an Unemployment Insurance claim, visit our online claims system or call our contact centers, where Employment Department staff are ready to help by phone, at 1-877-FILE-4-UI (1-877-345-3484). For help finding jobs and training resources, go to: www.WorkSourceOregon.org

The Oregon Employment Department (OED) is an equal opportunity agency. Everyone has a right to use OED programs and services. OED provides free help. Some examples are: Sign language and spoken language interpreters, written materials in other languages, braille, large print, audio and other formats. If you need help, please call 971-673-6400. TTY users call 711. You can also ask for help at OED_Communications@employ.oregon.gov.

El Departamento de Empleo de Oregon (OED) es una agencia de igualdad de oportunidades. El OED proporciona ayuda gratuita para que usted pueda utilizar nuestros servicios. Algunos ejemplos son intérpretes de lengua de señas e idiomas hablados, materiales escritos en otros idiomas, letra grande, audio y otros formatos. Para obtener ayuda, por favor llame al 503-947-1444. Usuarios de TTY pueden llamar al 711. También puede enviar un correo electrónico a OED_Communications@employ.oregon.gov.

###