

FOR IMMEDIATE RELEASE: May 5, 2026

CONTACT INFORMATION:

Guy Tauer, Regional Economist
Guy.r.tauer@employ.oregon.gov
(541) 816-8396

Employment in Douglas County

Douglas County's Payroll Employment Unchanged Over the Year

Douglas County's seasonally adjusted unemployment rate was little changed at 6.2% in March compared with the revised February rate of 6.3%. Over the year, Douglas County's seasonally adjusted unemployment rate increased slightly from 5.7% in March 2025. The Oregon rate was 5.2% and the U.S. rate was 4.3% in March.

Douglas County's seasonally adjusted payroll employment fell by 20 jobs in March after a loss of 70 in February and loss of 100 in January.

In the not seasonally adjusted private-sector industries in March, there was a loss in wood product manufacturing (-20). Leisure and hospitality added 50 over the month while other industries showed little employment change.

Government was unchanged in March with gains in federal (+40) and state (+10) offset by a loss of 50 in local government, mostly local education jobs.

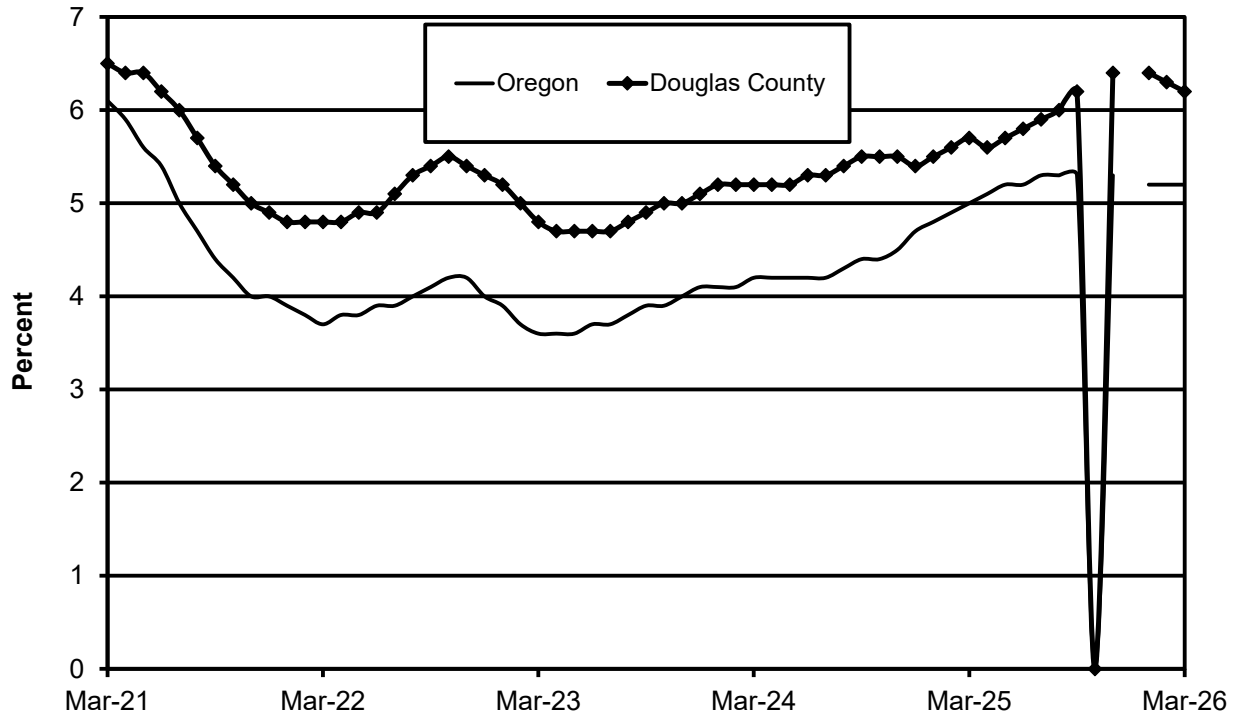
When comparing March 2026 with March 2025, seasonally adjusted total nonfarm employment was essentially flat. There were private-sector over-the-year gains in education and health services (50), leisure and hospitality (50), and construction (50). There were losses estimated in manufacturing (-220), financial activities (-70), information (-40), and professional and business services (-40).

Government added 120 jobs over the year in March due to gains in local education (80), Indian tribal (20), and federal government (20).

Next Press Releases

The Oregon Employment Department plans to release the April county and metropolitan area unemployment rates and employment survey data on Wednesday, May 27th, and the statewide unemployment rate and employment survey data for April on Wednesday, May 20th.

Seasonally Adjusted Unemployment Rates



The Oregon Employment Department and the U.S. Bureau of Labor Statistics (BLS) work cooperatively to develop and publish monthly payroll employment and labor force data for Oregon’s metropolitan areas and counties. The estimates of monthly job gains and losses are based on a survey of businesses. The estimates of unemployment are based on a survey of households and other sources.

The Oregon Employment Department payroll employment estimates are revised quarterly using information from unemployment insurance tax records. All department publications use data from this *official Oregon series* unless noted.

The department also makes the BLS-produced nonfarm payroll employment series for metropolitan areas available. These are revised annually by BLS.

You can subscribe to receive notification of new articles and publications from QualityInfo.org. To subscribe, go to www.qualityinfo.org/subscribe, enter your email address and click Sign In. In the Publication section, click on the + sign next to a report type category and then click on the geography(s) you are interested in. Take some time to browse the other publications on the page and see if there are some you’d like to receive an email notification for. You can receive notifications on a daily, weekly, or monthly schedule – whichever is most convenient for you. You can change your preferences – or unsubscribe – at any time.

The pdf version of the news release, including tables and graphs, can be found at www.qualityinfo.org/press-release/. To obtain the data in other formats such as in Excel, visit

QualityInfo.org, select Tools, and choose LAUS or CES from the dropdown menu. To request the press release as a Word document, contact the person shown at the top of this press release.

To file an Unemployment Insurance claim, visit our online claims system or call our contact centers, where Employment Department staff are ready to help by phone, at 1-877-FILE-4-UI (1-877-345-3484). For help finding jobs and training resources, go to: www.WorkSourceOregon.org

The Oregon Employment Department (OED) is an equal opportunity agency. Everyone has a right to use OED programs and services. OED provides free help. Some examples are: Sign language and spoken language interpreters, written materials in other languages, braille, large print, audio and other formats. If you need help, please call 971-673-6400. TTY users call 711. You can also ask for help at OED_Communications@employ.oregon.gov.

El Departamento de Empleo de Oregon (OED) es una agencia de igualdad de oportunidades. El OED proporciona ayuda gratuita para que usted pueda utilizar nuestros servicios. Algunos ejemplos son intérpretes de lengua de señas e idiomas hablados, materiales escritos en otros idiomas, letra grande, audio y otros formatos. Para obtener ayuda, por favor llame al 503-947-1444. Usuarios de TTY pueden llamar al 711. También puede enviar un correo electrónico a OED_Communications@employ.oregon.gov.



Workforce & Economic Research Division

QualityInfo.org

May 5, 2026

Douglas County Current Labor Force and Industry Employment

	--Change From--				
	March 2026	February 2026	March 2025	February 2026	March 2025
Labor Force Status					
Civilian labor force	46,798	46,864	46,610	-66	188
Unemployed	2,939	3,152	2,978	-213	-39
Unemployment rate	6.3%	6.7%	6.4%	-0.4	-0.1
<i>Unemployment rate (seasonally adjusted)</i>	6.2%	6.3%	5.7%	-0.1	0.5
Employed	43,859	43,712	43,632	147	227
Nonfarm Payroll Employment					
Total nonfarm employment	38,160	38,110	38,170	50	-10
<i>Total nonfarm employment (seasonally adjusted)</i>	38,420	38,440	38,430	-20	-10
Total private	30,210	30,160	30,340	50	-130
Mining, logging, and construction	2,550	2,550	2,470	0	80
Mining and logging	840	850	810	-10	30
Construction	1,710	1,700	1,660	10	50
Manufacturing	4,250	4,260	4,470	-10	-220
Durable goods	3,780	3,800	3,980	-20	-200
Wood product manufacturing	2,510	2,530	2,640	-20	-130
Nondurable goods	470	460	490	10	-20
Trade, transportation, and utilities	6,830	6,850	6,780	-20	50
Wholesale trade	890	900	860	-10	30
Retail trade	4,490	4,490	4,500	0	-10
Food and beverage retailers	1,030	1,030	1,020	0	10
General merchandise retailers	1,150	1,150	1,100	0	50
Transportation, warehousing, and utilities	1,450	1,460	1,420	-10	30
Information	300	300	340	0	-40
Financial activities	1,240	1,230	1,310	10	-70
Professional and business services	2,890	2,880	2,930	10	-40
Private education and health services	7,220	7,210	7,170	10	50
Leisure and hospitality	3,660	3,610	3,610	50	50
Food services and drinking places	2,930	2,890	2,850	40	80
Other services	1,270	1,270	1,260	0	10
Government	7,950	7,950	7,830	0	120
Federal government	1,470	1,430	1,450	40	20
State government	710	700	710	10	0
Local government	5,770	5,820	5,670	-50	100
Indian tribal	1,140	1,140	1,120	0	20
Local education	3,160	3,200	3,080	-40	80
Local government excluding education and tribal	1,470	1,480	1,470	-10	0

The most recent month is preliminary, the prior month is revised. Prepared in cooperation with the U.S. Department of Labor, Bureau of Labor Statistics.

Civilian labor force includes employed and unemployed individuals 16 years and older by place of residence.

Employed includes payroll employment, self-employed, unpaid family workers, domestics, agriculture, and labor disputants.

Unemployment rate is calculated by dividing unemployed by civilian labor force.

Nonfarm Payroll Employment: Data are by place of work and cover full- and part-time employees who worked or received pay for the pay period that includes the 12th of the month. The data exclude the self-employed, volunteers, unpaid family workers, and domestics.

###