

FOR IMMEDIATE RELEASE: May 20, 2025

CONTACT INFORMATION:

Brian Rooney, Regional Economist
brian.t.rooney@employ.oregon.gov
(541) 359-9546

Employment in Douglas County

Douglas County Employers Drop 110 Jobs in April

Douglas County's seasonally adjusted payroll employment decreased by 110 jobs in April after a gain of 100 in March and no change in February.

In the not seasonally adjusted private-sector industries in April, there were relatively large gains in leisure and hospitality (50), retail trade (40), and private education and health services (20).

Government added 20 jobs in April from a gain in local education.

When comparing April 2025 with April 2024, total nonfarm employment decreased by 470 jobs, or -1.2%. Private-sector over-the-year gains were seen in private education and health services (220); transportation, warehousing, and utilities (20); and other services (20). There were relatively large losses in retail trade (-220), manufacturing (-140), professional and business services (-150), mining and logging (-90), construction (-70), and financial activities (-50).

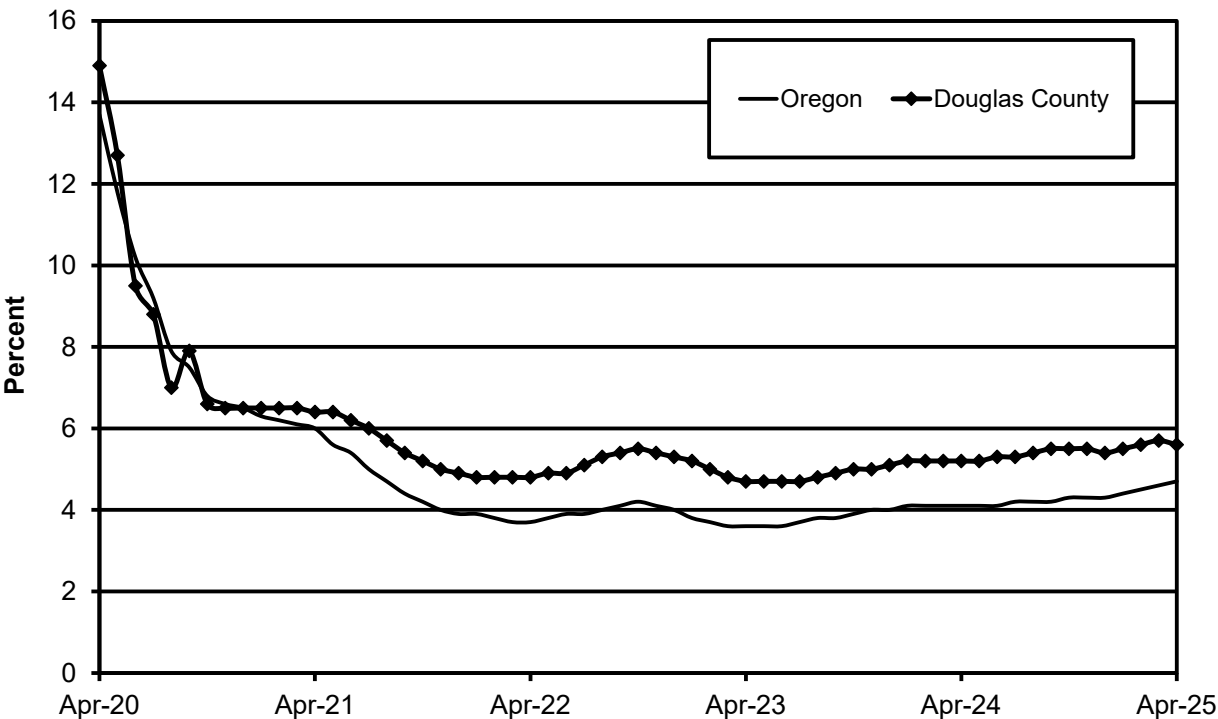
Government added 130 jobs due to gains in local government (80), and federal government (50).

Douglas County's seasonally adjusted unemployment rate edged down to 5.6% in April compared with a revised 5.7% in March. The rate is up from 5.2% in April 2024. Douglas County's record low unemployment rate was set in November 2019 at 4.4%. The Oregon seasonally adjusted April rate was 4.7% and the U.S. rate was 4.2%.

Next Press Releases

The Oregon Employment Department plans to release the May county and metropolitan area unemployment rates and employment survey data on Tuesday, June 24th and the statewide unemployment rate and employment survey data for May on Wednesday, June 18th.

Seasonally Adjusted Unemployment Rates





Workforce & Economic Research Division

QualityInfo.org

May 20, 2025

Douglas County Current Labor Force and Industry Employment

| | --Change From-- | | | | |
|---|-----------------|---------------|---------------|---------------|---------------|
| | April 2025 | March 2025 | April 2024 | March 2025 | April 2024 |
| Labor Force Status | | | | | |
| Civilian labor force | 45,858 | 46,282 | 46,319 | -424 | -461 |
| Unemployed | 2,287 | 2,926 | 2,184 | -639 | 103 |
| Unemployment rate | 5.0% | 6.3% | 4.7% | -1.3 | 0.3 |
| <i>Unemployment rate (seasonally adjusted)</i> | <i>5.6%</i> | <i>5.7%</i> | <i>5.2%</i> | <i>-0.1</i> | <i>0.4</i> |
| Employed | 43,571 | 43,356 | 44,135 | 215 | -564 |
| Nonfarm Payroll Employment | | | | | |
| Total nonfarm employment | 38,220 | 38,080 | 38,700 | 140 | -480 |
| <i>Total nonfarm employment (seasonally adjusted)</i> | <i>38,280</i> | <i>38,390</i> | <i>38,750</i> | <i>-110</i> | <i>-470</i> |
| Total private | 30,260 | 30,140 | 30,870 | 120 | -610 |
| Mining, logging, and construction | 2,460 | 2,460 | 2,620 | 0 | -160 |
| Mining and logging | 790 | 790 | 880 | 0 | -90 |
| Construction | 1,670 | 1,670 | 1,740 | 0 | -70 |
| Manufacturing | 4,490 | 4,490 | 4,630 | 0 | -140 |
| Durable goods | 4,000 | 4,000 | 4,130 | 0 | -130 |
| Wood product manufacturing | 2,600 | 2,600 | 2,700 | 0 | -100 |
| Nondurable goods | 490 | 490 | 500 | 0 | -10 |
| Trade, transportation, and utilities | 6,870 | 6,850 | 7,080 | 20 | -210 |
| Wholesale trade | 850 | 860 | 860 | -10 | -10 |
| Retail trade | 4,570 | 4,530 | 4,790 | 40 | -220 |
| Food and beverage retailers | 1,080 | 1,070 | 1,140 | 10 | -60 |
| General merchandise retailers | 1,110 | 1,090 | 1,120 | 20 | -10 |
| Transportation, warehousing, and utilities | 1,450 | 1,460 | 1,430 | -10 | 20 |
| Information | 340 | 340 | 340 | 0 | 0 |
| Financial activities | 1,280 | 1,260 | 1,330 | 20 | -50 |
| Professional and business services | 2,860 | 2,860 | 3,010 | 0 | -150 |
| Private education and health services | 7,110 | 7,080 | 6,890 | 30 | 220 |
| Leisure and hospitality | 3,590 | 3,540 | 3,730 | 50 | -140 |
| Food services and drinking places | 2,860 | 2,830 | 2,910 | 30 | -50 |
| Other services | 1,260 | 1,260 | 1,240 | 0 | 20 |
| Government | 7,960 | 7,940 | 7,830 | 20 | 130 |
| Federal government | 1,490 | 1,480 | 1,440 | 10 | 50 |
| State government | 700 | 700 | 700 | 0 | 0 |
| Local government | 5,770 | 5,760 | 5,690 | 10 | 80 |
| Indian tribal | 1,120 | 1,130 | 1,110 | -10 | 10 |
| Local education | 3,140 | 3,120 | 3,080 | 20 | 60 |
| Local government excluding education and tribal | 1,510 | 1,510 | 1,500 | 0 | 10 |

The most recent month is preliminary, the prior month is revised. Prepared in cooperation with the U.S. Department of Labor, Bureau of Labor Statistics.

Civilian labor force includes employed and unemployed individuals 16 years and older by place of residence.

Employed includes payroll employment, self-employed, unpaid family workers, domestics, agriculture, and labor disputants.

Unemployment rate is calculated by dividing unemployed by civilian labor force.

Nonfarm Payroll Employment: Data are by place of work and cover full- and part-time employees who worked or received pay for the pay period that includes the 12th of the month. The data exclude the self-employed, volunteers, unpaid family workers, and domestics.

The Oregon Employment Department and the U.S. Bureau of Labor Statistics (BLS) work cooperatively to develop and publish monthly payroll employment and labor force data for Oregon's metropolitan areas and counties. The estimates of monthly job gains and losses are based on a survey of businesses. The estimates of unemployment are based on a survey of households and other sources.

The Oregon Employment Department payroll employment estimates are revised quarterly using information from unemployment insurance tax records. All department publications use data from this *official Oregon series* unless noted.

The department also makes the BLS-produced nonfarm payroll employment series for metropolitan areas available. These are revised annually by BLS.

You can subscribe to receive notification of new articles and publications from QualityInfo.org. To subscribe, go to www.qualityinfo.org/subscribe, enter your email address and click Sign In. In the Publication section, click on the + sign next to a report type category and then click on the geography(s) you are interested in. Take some time to browse the other publications on the page and see if there are some you'd like to receive an email notification for. You can receive notifications on a daily, weekly, or monthly schedule – whichever is most convenient for you. You can change your preferences – or unsubscribe – at any time.

The pdf version of the news release, including tables and graphs, can be found at www.qualityinfo.org/press-release/. To obtain the data in other formats such as in Excel, visit QualityInfo.org, select Tools, and choose LAUS or CES from the dropdown menu. To request the press release as a Word document, contact the person shown at the top of this press release.

To file an Unemployment Insurance claim, visit our online claims system or call our contact centers, where Employment Department staff are ready to help by phone, at 1-877-FILE-4-UI (1-877-345-3484). For help finding jobs and training resources, go to: www.WorkSourceOregon.org

The Oregon Employment Department (OED) is an equal opportunity agency. Everyone has a right to use OED programs and services. OED provides free help. Some examples are: Sign language and spoken language interpreters, written materials in other languages, braille, large print, audio and other formats. If you need help, please call 971-673-6400. TTY users call 711. You can also ask for help at OED_Communications@employ.oregon.gov.

El Departamento de Empleo de Oregon (OED) es una agencia de igualdad de oportunidades. El OED proporciona ayuda gratuita para que usted pueda utilizar nuestros servicios. Algunos ejemplos son intérpretes de lengua de señas e idiomas hablados, materiales escritos en otros idiomas, letra grande, audio y otros formatos. Para obtener ayuda, por favor llame al 503-947-1444. Usuarios de TTY pueden llamar al 711. También puede enviar un correo electrónico a OED_Communications@employ.oregon.gov.

###