

FOR IMMEDIATE RELEASE: July 22, 2025

CONTACT INFORMATION:

Brian Rooney, Regional Economist
brian.t.rooney@employ.oregon.gov
(541) 359-9546

Employment in Douglas County

Douglas County Employers Add 40 Jobs in June

Douglas County's seasonally adjusted payroll employment increased by 40 jobs in June after an increase of 60 in May and a loss of 160 in April.

In the not seasonally adjusted private-sector industries in June, there were relatively large gains in leisure and hospitality (110), professional and business services (30), construction (20), retail trade (20), and other services (20). There was a relatively large loss in private education and health services (-90).

Government held steady in the month of June.

When comparing June 2025 with June 2024, total nonfarm employment decreased by 240 jobs, or -0.6%. Private-sector over-the-year gains were seen in private education and health services (290) and other services (30). There were relatively large losses in manufacturing (-160), retail trade (-150), leisure and hospitality (-150) and professional and business services (-60).

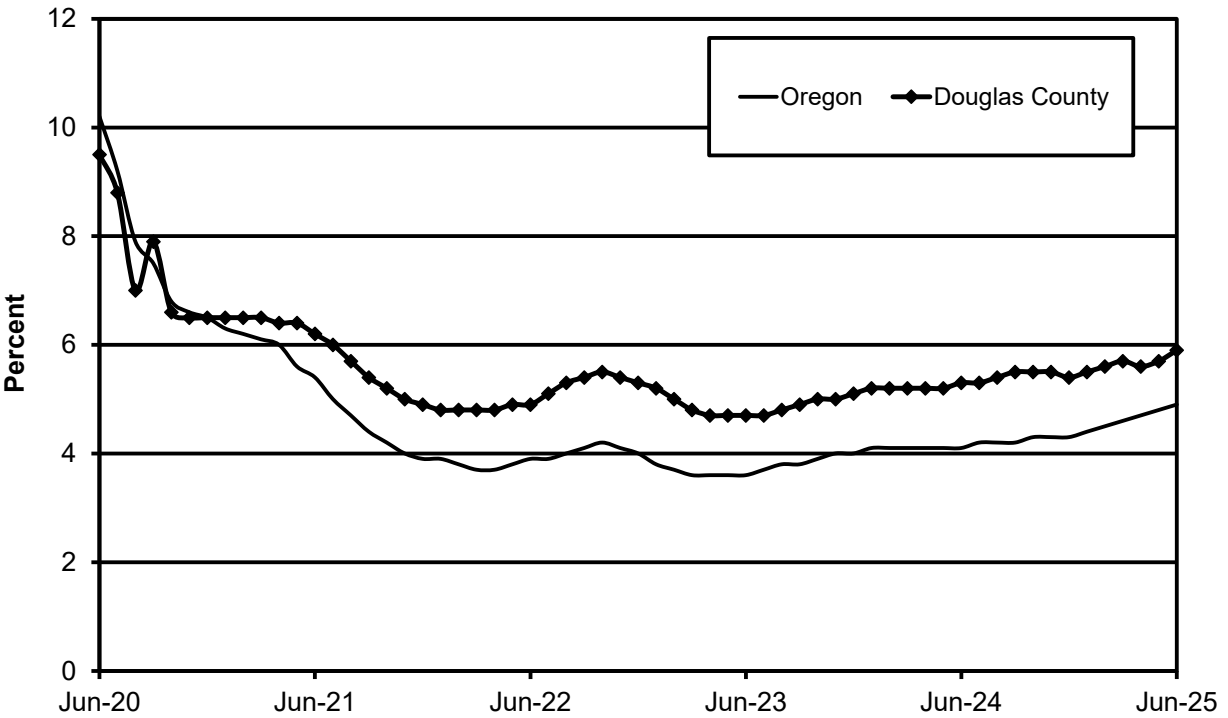
Government added 160 jobs over the year in June due to gains in local education (140), and federal government (20).

Douglas County's seasonally adjusted unemployment rate edged up to 5.9% in June compared with a revised 5.7% in May. The rate is up significantly from 5.3% in June 2024. Douglas County's record low unemployment rate was set in November 2019 at 4.4%. The Oregon seasonally adjusted June rate was 4.9% and the U.S. rate was 4.1%.

Next Press Releases

The Oregon Employment Department plans to release the July county and metropolitan area unemployment rates on Tuesday, August 19, and the statewide unemployment rate and employment survey data for July on Wednesday, Aug. 13.

Seasonally Adjusted Unemployment Rates





Workforce & Economic Research Division

QualityInfo.org

July 22, 2025

Douglas County Current Labor Force and Industry Employment

	--Change From--				
	June 2025	May 2025	June 2024	May 2025	June 2024
Labor Force Status					
Civilian labor force	46,864	46,128	46,663	736	201
Unemployed	2,939	2,527	2,402	412	537
Unemployment rate	6.3%	5.5%	5.1%	0.8	1.2
<i>Unemployment rate (seasonally adjusted)</i>	<i>5.9%</i>	<i>5.7%</i>	<i>5.3%</i>	<i>0.2</i>	<i>0.6</i>
Employed	43,925	43,601	44,261	324	-336
Nonfarm Payroll Employment					
Total nonfarm employment	38,670	38,540	38,910	130	-240
<i>Total nonfarm employment (seasonally adjusted)</i>	<i>38,330</i>	<i>38,290</i>	<i>38,570</i>	<i>40</i>	<i>-240</i>
Total private	30,630	30,500	31,030	130	-400
Mining, logging, and construction	2,530	2,500	2,650	30	-120
Mining and logging	800	790	870	10	-70
Construction	1,730	1,710	1,780	20	-50
Manufacturing	4,490	4,490	4,650	0	-160
Durable goods	3,980	3,990	4,130	-10	-150
Wood product manufacturing	2,600	2,610	2,690	-10	-90
Nondurable goods	510	500	520	10	-10
Trade, transportation, and utilities	6,900	6,880	7,060	20	-160
Wholesale trade	860	850	870	10	-10
Retail trade	4,610	4,590	4,760	20	-150
Food and beverage retailers	1,080	1,080	1,120	0	-40
General merchandise retailers	1,150	1,130	1,120	20	30
Transportation, warehousing, and utilities	1,430	1,440	1,430	-10	0
Information	340	340	340	0	0
Financial activities	1,290	1,280	1,360	10	-70
Professional and business services	2,930	2,900	2,990	30	-60
Private education and health services	7,130	7,220	6,840	-90	290
Leisure and hospitality	3,750	3,640	3,900	110	-150
Food services and drinking places	2,960	2,920	2,990	40	-30
Other services	1,270	1,250	1,240	20	30
Government	8,040	8,040	7,880	0	160
Federal government	1,490	1,500	1,470	-10	20
State government	710	700	710	10	0
Local government	5,840	5,840	5,700	0	140
Indian tribal	1,130	1,120	1,110	10	20
Local education	3,180	3,190	3,040	-10	140
Local government excluding education and tribal	1,530	1,530	1,550	0	-20

The most recent month is preliminary, the prior month is revised. Prepared in cooperation with the U.S. Department of Labor, Bureau of Labor Statistics.

Civilian labor force includes employed and unemployed individuals 16 years and older by place of residence.

Employed includes payroll employment, self-employed, unpaid family workers, domestics, agriculture, and labor disputants.

Unemployment rate is calculated by dividing unemployed by civilian labor force.

Nonfarm Payroll Employment: Data are by place of work and cover full- and part-time employees who worked or received pay for the pay period that includes the 12th of the month. The data exclude the self-employed, volunteers, unpaid family workers, and domestics.

The Oregon Employment Department and the U.S. Bureau of Labor Statistics (BLS) work cooperatively to develop and publish monthly payroll employment and labor force data for Oregon's metropolitan areas and counties. The estimates of monthly job gains and losses are based on a survey of businesses. The estimates of unemployment are based on a survey of households and other sources.

The Oregon Employment Department payroll employment estimates are revised quarterly using information from unemployment insurance tax records. All department publications use data from this *official Oregon series* unless noted.

The department also makes the BLS-produced nonfarm payroll employment series for metropolitan areas available. These are revised annually by BLS.

You can subscribe to receive notification of new articles and publications from QualityInfo.org. To subscribe, go to www.qualityinfo.org/subscribe, enter your email address and click Sign In. In the Publication section, click on the + sign next to a report type category and then click on the geography(s) you are interested in. Take some time to browse the other publications on the page and see if there are some you'd like to receive an email notification for. You can receive notifications on a daily, weekly, or monthly schedule – whichever is most convenient for you. You can change your preferences – or unsubscribe – at any time.

The pdf version of the news release, including tables and graphs, can be found at www.qualityinfo.org/press-release/. To obtain the data in other formats such as in Excel, visit QualityInfo.org, select Tools, and choose LAUS or CES from the dropdown menu. To request the press release as a Word document, contact the person shown at the top of this press release.

To file an Unemployment Insurance claim, visit our online claims system or call our contact centers, where Employment Department staff are ready to help by phone, at 1-877-FILE-4-UI (1-877-345-3484). For help finding jobs and training resources, go to: www.WorkSourceOregon.org

The Oregon Employment Department (OED) is an equal opportunity agency. Everyone has a right to use OED programs and services. OED provides free help. Some examples are: Sign language and spoken language interpreters, written materials in other languages, braille, large print, audio and other formats. If you need help, please call 971-673-6400. TTY users call 711. You can also ask for help at OED_Communications@employ.oregon.gov.

El Departamento de Empleo de Oregon (OED) es una agencia de igualdad de oportunidades. El OED proporciona ayuda gratuita para que usted pueda utilizar nuestros servicios. Algunos ejemplos son intérpretes de lengua de señas e idiomas hablados, materiales escritos en otros idiomas, letra grande, audio y otros formatos. Para obtener ayuda, por favor llame al 503-947-1444. Usuarios de TTY pueden llamar al 711. También puede enviar un correo electrónico a OED_Communications@employ.oregon.gov.

###