

FOR IMMEDIATE RELEASE: September 23, 2025

CONTACT INFORMATION:

Brian Rooney, Regional Economist
brian.t.rooney@employ.oregon.gov
(541) 359-9546

Employment in Douglas County

Douglas County Employers Add 60 Jobs in August

Douglas County's seasonally adjusted payroll employment increased by 60 jobs in August after a decrease of 220 in July and an increase of 160 in June.

In the not seasonally adjusted private-sector industries in August, there were relatively large gains in transportation, warehousing, and utilities (60) and professional and business services (30). There was a loss of 40 in manufacturing.

Government increased by 110 in the month of August from gains in local government.

When comparing August 2025 with August 2024, seasonally adjusted total nonfarm employment increased by 90 jobs, or 0.2%. There was a relatively large private-sector over-the-year gain in private education and health services (400). There were relatively large losses in retail trade (-150), manufacturing (-70), and construction (-50).

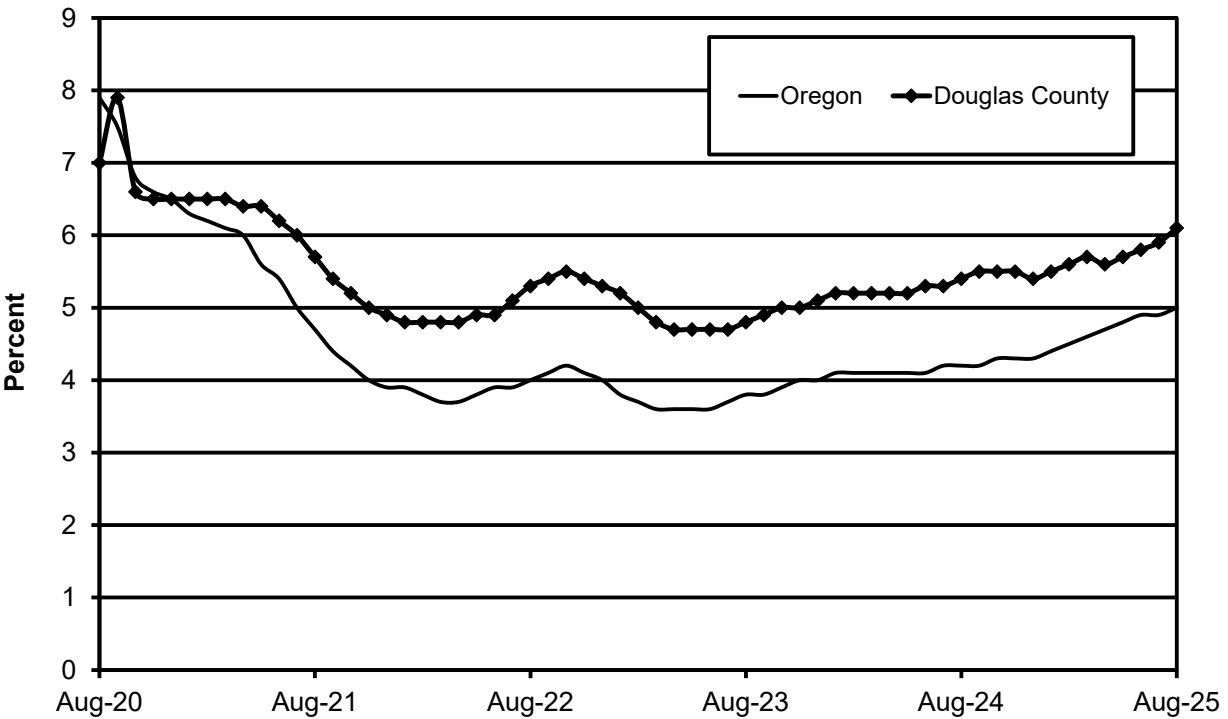
Government held steady over the year in August due to a drop of 30 in federal government that was countered by an increase of 30 in local government.

Douglas County's seasonally adjusted unemployment rate edged up to 6.1% in August compared with a revised 5.9% in July. The rate is up significantly from 5.4% in August 2024. Douglas County's record low unemployment rate was set in November 2019 at 4.4%. The Oregon seasonally adjusted August rate was 5.0% and the U.S. rate was 4.3%.

Next Press Releases

The Oregon Employment Department plans to release the September county and metropolitan area unemployment rates on Tuesday, Oct. 21, and the statewide unemployment rate and employment survey data for September on Wednesday, Oct. 15.

Seasonally Adjusted Unemployment Rates





Workforce & Economic Research Division

QualityInfo.org

September 23, 2025

Douglas County Current Labor Force and Industry Employment

	--Change From--				
	August 2025	July 2025	August 2024	July 2025	August 2024
Labor Force Status					
Civilian labor force	47,305	47,220	46,645	85	660
Unemployed	3,150	3,066	2,659	84	491
Unemployment rate	6.7%	6.5%	5.7%	0.2	1.0
<i>Unemployment rate (seasonally adjusted)</i>	6.1%	5.9%	5.4%	0.2	0.7
Employed	44,155	44,154	43,986	1	169
Nonfarm Payroll Employment					
Total nonfarm employment	38,490	38,360	38,400	130	90
<i>Total nonfarm employment (seasonally adjusted)</i>	38,460	38,400	38,370	60	90
Total private	31,100	31,080	31,010	20	90
Mining, logging, and construction	2,590	2,580	2,680	10	-90
Mining and logging	830	830	870	0	-40
Construction	1,760	1,750	1,810	10	-50
Manufacturing	4,480	4,520	4,550	-40	-70
Durable goods	3,970	3,990	4,020	-20	-50
Wood product manufacturing	2,650	2,650	2,620	0	30
Nondurable goods	510	530	530	-20	-20
Trade, transportation, and utilities	6,890	6,820	7,030	70	-140
Wholesale trade	860	850	870	10	-10
Retail trade	4,580	4,580	4,730	0	-150
Food and beverage retailers	1,030	1,020	1,100	10	-70
General merchandise retailers	1,170	1,180	1,140	-10	30
Transportation, warehousing, and utilities	1,450	1,390	1,430	60	20
Information	340	340	340	0	0
Financial activities	1,360	1,370	1,340	-10	20
Professional and business services	3,040	3,010	3,020	30	20
Private education and health services	7,280	7,300	6,880	-20	400
Leisure and hospitality	3,870	3,890	3,910	-20	-40
Food services and drinking places	2,980	2,990	2,970	-10	10
Other services	1,250	1,250	1,260	0	-10
Government	7,390	7,280	7,390	110	0
Federal government	1,470	1,470	1,500	0	-30
State government	710	710	710	0	0
Local government	5,210	5,100	5,180	110	30
Indian tribal	1,150	1,140	1,110	10	40
Local education	2,500	2,460	2,470	40	30
Local government excluding education and tribal	1,560	1,500	1,600	60	-40

The most recent month is preliminary, the prior month is revised. Prepared in cooperation with the U.S. Department of Labor, Bureau of Labor Statistics.

Civilian labor force includes employed and unemployed individuals 16 years and older by place of residence.

Employed includes payroll employment, self-employed, unpaid family workers, domestics, agriculture, and labor disputants.

Unemployment rate is calculated by dividing unemployed by civilian labor force.

Nonfarm Payroll Employment: Data are by place of work and cover full- and part-time employees who worked or received pay for the pay period that includes the 12th of the month. The data exclude the self-employed, volunteers, unpaid family workers, and domestics.

The Oregon Employment Department and the U.S. Bureau of Labor Statistics (BLS) work cooperatively to develop and publish monthly payroll employment and labor force data for Oregon's metropolitan areas and counties. The estimates of monthly job gains and losses are based on a survey of businesses. The estimates of unemployment are based on a survey of households and other sources.

The Oregon Employment Department payroll employment estimates are revised quarterly using information from unemployment insurance tax records. All department publications use data from this *official Oregon series* unless noted.

The department also makes the BLS-produced nonfarm payroll employment series for metropolitan areas available. These are revised annually by BLS.

You can subscribe to receive notification of new articles and publications from QualityInfo.org. To subscribe, go to www.qualityinfo.org/subscribe, enter your email address and click Sign In. In the Publication section, click on the + sign next to a report type category and then click on the geography(s) you are interested in. Take some time to browse the other publications on the page and see if there are some you'd like to receive an email notification for. You can receive notifications on a daily, weekly, or monthly schedule – whichever is most convenient for you. You can change your preferences – or unsubscribe – at any time.

The pdf version of the news release, including tables and graphs, can be found at www.qualityinfo.org/press-release/. To obtain the data in other formats such as in Excel, visit QualityInfo.org, select Tools, and choose LAUS or CES from the dropdown menu. To request the press release as a Word document, contact the person shown at the top of this press release.

To file an Unemployment Insurance claim, visit our online claims system or call our contact centers, where Employment Department staff are ready to help by phone, at 1-877-FILE-4-UI (1-877-345-3484). For help finding jobs and training resources, go to: www.WorkSourceOregon.org

The Oregon Employment Department (OED) is an equal opportunity agency. Everyone has a right to use OED programs and services. OED provides free help. Some examples are: Sign language and spoken language interpreters, written materials in other languages, braille, large print, audio and other formats. If you need help, please call 971-673-6400. TTY users call 711. You can also ask for help at OED_Communications@employ.oregon.gov.

El Departamento de Empleo de Oregon (OED) es una agencia de igualdad de oportunidades. El OED proporciona ayuda gratuita para que usted pueda utilizar nuestros servicios. Algunos ejemplos son intérpretes de lengua de señas e idiomas hablados, materiales escritos en otros idiomas, letra grande, audio y otros formatos. Para obtener ayuda, por favor llame al 503-947-1444. Usuarios de TTY pueden llamar al 711. También puede enviar un correo electrónico a OED_Communications@employ.oregon.gov.

###