

FOR IMMEDIATE RELEASE: Jan. 27, 2026

CONTACT INFORMATION:
Brian Rooney, Regional Economist
brian.t.rooney@employ.oregon.gov
(541) 359-9546

Employment in Lane County (Eugene MSA)

Lane County Employers Added 800 Payroll Jobs in December

Lane County's seasonally adjusted payroll employment increased by 800 in December after a loss of 400 November and a gain of 500 in October.

In the not seasonally adjusted private-sector industries in December, there was a gain of 300 in financial activities. There were relatively large seasonal losses in construction (-300) and leisure and hospitality (-300).

Government gained 400 jobs in December due to a gain of 200 in local education and gains of 100 each in federal government and noneducation local government.

When comparing December 2025 with December 2024, total nonfarm employment dropped 200 jobs on a seasonally adjusted basis for a loss of 0.1%. There were relatively large gains in private education and health services (500) and retail trade (200). There were relatively large losses in construction (-400) and professional and business services (-300).

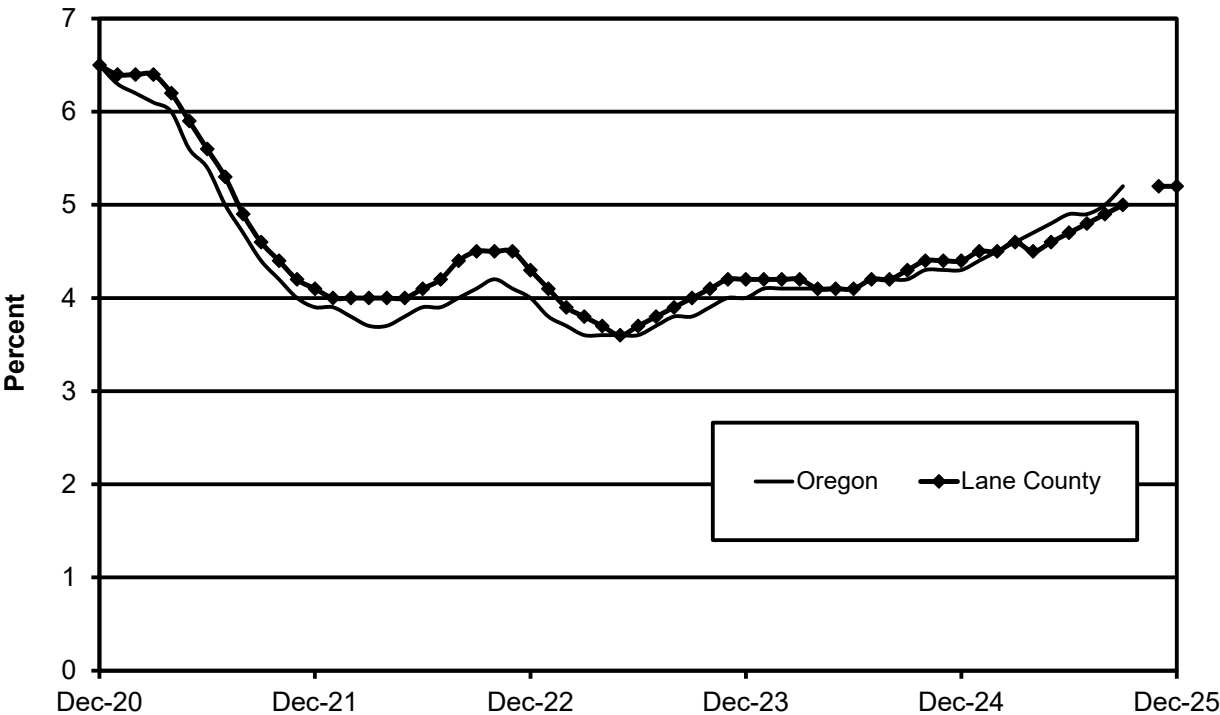
There was an over-the-year loss of 800 in government in December from a loss in local education (-900) that was countered by a gain in noneducation local government (100).

Lane County's seasonally adjusted unemployment rate held steady at 5.2% in December compared to November. The rate was up from 4.4% in December 2024. The Oregon not seasonally adjusted December rate was 5.2% and the U.S. rate was 4.4%.

Next Press Releases

We are awaiting notification from the Bureau of Labor Statistics regarding publication dates for the rest of the year and will update our [schedule of future releases](#) as dates become available.

Seasonally Adjusted Unemployment Rates





Workforce & Economic Research Division

QualityInfo.org

January 27, 2026

Eugene-Springfield MSA Current Labor Force and Industry Employment

	--Change From--				
	December 2025	November 2025	December 2024	November 2025	December 2024
Labor Force Status					
Civilian labor force	190,471	191,663	189,586	-1,192	885
Unemployed	9,595	9,194	8,130	401	1,465
Unemployment rate	5.0%	4.8%	4.3%	0.2	0.7
<i>Unemployment rate (seasonally adjusted)</i>	<i>5.2%</i>	<i>5.2%</i>	<i>4.4%</i>	<i>0.0</i>	<i>0.8</i>
Employed	180,876	182,469	181,456	-1,593	-580
Nonfarm Payroll Employment					
Total nonfarm employment	165,400	165,100	165,900	300	-500
<i>Total nonfarm employment (seasonally adjusted)</i>	<i>164,600</i>	<i>163,800</i>	<i>164,800</i>	<i>800</i>	<i>-200</i>
Total private	133,900	134,000	133,600	-100	300
Mining, logging, and construction	8,000	8,200	8,300	-200	-300
Mining and logging	1,000	900	900	100	100
Construction	7,000	7,300	7,400	-300	-400
Manufacturing	14,200	14,100	14,100	100	100
Durable goods	9,100	9,000	9,100	100	0
Wood product manufacturing	3,800	3,800	3,800	0	0
Nondurable goods	5,100	5,100	5,000	0	100
Trade, transportation, and utilities	29,000	28,800	29,100	200	-100
Wholesale trade	5,900	5,800	6,000	100	-100
Retail trade	19,400	19,300	19,200	100	200
Food and beverage retailers	4,800	4,800	4,900	0	-100
Transportation, warehousing, and utilities	3,700	3,700	3,900	0	-200
Information	2,000	2,000	2,000	0	0
Financial activities	9,000	8,700	8,900	300	100
Professional and business services	17,500	17,600	17,800	-100	-300
Administrative and support services	6,300	6,400	6,500	-100	-200
Private education and health services	31,600	31,600	31,100	0	500
Health care and social assistance	29,300	29,300	28,900	0	400
Leisure and hospitality	17,300	17,600	17,200	-300	100
Accommodation and food services	15,500	15,700	15,200	-200	300
Food services and drinking places	13,900	14,000	13,600	-100	300
Other services	5,300	5,400	5,100	-100	200
Government	31,500	31,100	32,300	400	-800
Federal government	1,900	1,800	1,900	100	0
State government	2,100	2,100	2,100	0	0
State education	NA	NA	NA	NA	NA
Local government	27,500	27,200	28,300	300	-800
Local education	19,300	19,100	20,200	200	-900

The most recent month is preliminary, the prior month is revised. Prepared in cooperation with the U.S. Department of Labor, Bureau of Labor Statistics.

Civilian labor force includes employed and unemployed individuals 16 years and older by place of residence.

Employed includes payroll employment, self-employed, unpaid family workers, domestics, agriculture, and labor disputants.

Unemployment rate is calculated by dividing unemployed by civilian labor force.

Nonfarm Payroll Employment: Official Oregon Series. Data are by place of work and cover full- and part-time employees who worked or received pay for the pay period that includes the 12th of the month. The data exclude the self-employed, volunteers, unpaid family workers, and domestics.

The Oregon Employment Department and the U.S. Bureau of Labor Statistics (BLS) work cooperatively to develop and publish monthly payroll employment and labor force data for Oregon's metropolitan areas and counties. The estimates of monthly job gains and losses are based on a survey of businesses. The estimates of unemployment are based on a survey of households and other sources.

The Oregon Employment Department payroll employment estimates are revised quarterly using information from unemployment insurance tax records. All department publications use data from this *official Oregon series* unless noted.

The department also makes the BLS-produced nonfarm payroll employment series for metropolitan areas available. These are revised annually by BLS.

You can subscribe to receive notification of new articles and publications from QualityInfo.org. To subscribe, go to www.qualityinfo.org/subscribe, enter your email address and click Sign In. In the Publication section, click on the + sign next to a report type category and then click on the geography(s) you are interested in. Take some time to browse the other publications on the page and see if there are some you'd like to receive an email notification for. You can receive notifications on a daily, weekly, or monthly schedule – whichever is most convenient for you. You can change your preferences – or unsubscribe – at any time.

The pdf version of the news release, including tables and graphs, can be found at www.qualityinfo.org/press-release/. To obtain the data in other formats such as in Excel, visit QualityInfo.org, select Tools, and choose LAUS or CES from the dropdown menu. To request the press release as a Word document, contact the person shown at the top of this press release.

To file an Unemployment Insurance claim, visit our online claims system or call our contact centers, where Employment Department staff are ready to help by phone, at 1-877-FILE-4-UI (1-877-345-3484). For help finding jobs and training resources, go to: www.WorkSourceOregon.org.

The Oregon Employment Department (OED) is an equal opportunity agency. Everyone has a right to use OED programs and services. OED provides free help. Some examples are: Sign language and spoken language interpreters, written materials in other languages, braille, large print, audio and other formats. If you need help, please call 971-673-6400. TTY users call 711. You can also ask for help at OED_Communications@employ.oregon.gov.

El Departamento de Empleo de Oregon (OED) es una agencia de igualdad de oportunidades. El OED proporciona ayuda gratuita para que usted pueda utilizar nuestros servicios. Algunos ejemplos son intérpretes de lengua de señas e idiomas hablados, materiales escritos en otros idiomas, letra grande, audio y otros formatos. Para obtener ayuda, por favor llame al 503-947-1444. Usuarios de TTY pueden llamar al 711. También puede enviar un correo electrónico a OED_Communications@employ.oregon.gov.

###