

FOR IMMEDIATE RELEASE: April 7, 2026

CONTACT INFORMATION:
Guy Tauer, Regional Economist
Guy.r.tauer@employ.oregon.gov
(541) 816-8396

Employment in Lane County (Eugene MSA)

Lane County Employers Had Little Change in Payroll Jobs in January

Lane County's seasonally adjusted payroll employment increased by 100 in January after a gain of 800 in December and a gain of 400 in November.

In the not seasonally adjusted private-sector industries in January, there were losses in professional and business services (-600), retail trade (-500), construction (-200), and leisure and hospitality (-200). Health care and social assistance added 400 jobs over the month.

Government lost 400 jobs in January due to losses in local government (-300) and federal government (-100).

When comparing January 2026 with January 2025, total nonfarm employment dropped 1,800 jobs on a seasonally adjusted basis for a loss of 1.1%. There was a relatively large increase in health care and social assistance (1,000). There were relatively large losses in professional and business services (-500), manufacturing (-400), leisure and hospitality (-300), and construction (-200).

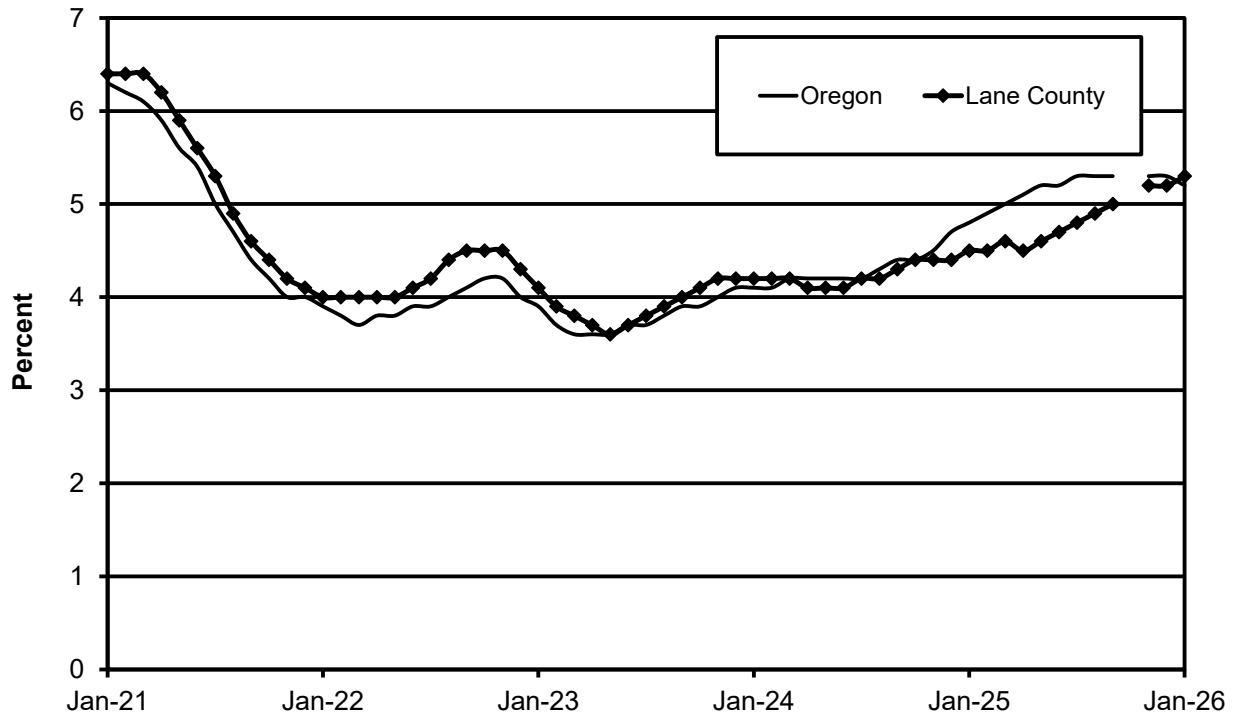
There was an over-the-year loss of 100 in government in January from losses in both local education (-400) and federal government (-100) that were countered by gains in noneducation local government (300) and state government (100).

Lane County's seasonally adjusted unemployment rate was little changed at 5.3% in January compared with 5.2% in December. The rate was up from 4.5% in January 2025. The Oregon seasonally adjusted January rate was 5.2% and the U.S. rate was 4.3%.

Next Press Releases

The Oregon Employment Department plans to release the February county and metropolitan area unemployment rates and employment survey data on Tuesday, April 21st, and the statewide unemployment rate and employment survey data for February on Wednesday, April 15th.

Seasonally Adjusted Unemployment Rates



The Oregon Employment Department and the U.S. Bureau of Labor Statistics (BLS) work cooperatively to develop and publish monthly payroll employment and labor force data for Oregon’s metropolitan areas and counties. The estimates of monthly job gains and losses are based on a survey of businesses. The estimates of unemployment are based on a survey of households and other sources.

The Oregon Employment Department payroll employment estimates are revised quarterly using information from unemployment insurance tax records. All department publications use data from this *official Oregon series* unless noted.

The department also makes the BLS-produced nonfarm payroll employment series for metropolitan areas available. These are revised annually by BLS.

You can subscribe to receive notification of new articles and publications from QualityInfo.org. To subscribe, go to www.qualityinfo.org/subscribe, enter your email address and click Sign In. In the Publication section, click on the + sign next to a report type category and then click on the geography(s) you are interested in. Take some time to browse the other publications on the page and see if there are some you’d like to receive an email notification for. You can receive notifications on a daily, weekly, or monthly schedule – whichever is most convenient for you. You can change your preferences – or unsubscribe – at any time.

The pdf version of the news release, including tables and graphs, can be found at www.qualityinfo.org/press-release/. To obtain the data in other formats such as in Excel, visit QualityInfo.org, select Tools, and choose LAUS or CES from the dropdown menu. To request the press release as a Word document, contact the person shown at the top of this press release.

To file an Unemployment Insurance claim, visit our online claims system or call our contact centers, where Employment Department staff are ready to help by phone, at 1-877-FILE-4-UI (1-877-345-3484). For help finding jobs and training resources, go to: www.WorkSourceOregon.org.

The Oregon Employment Department (OED) is an equal opportunity agency. Everyone has a right to use OED programs and services. OED provides free help. Some examples are: Sign language and spoken language interpreters, written materials in other languages, braille, large print, audio and other formats. If you need help, please call 971-673-6400. TTY users call 711. You can also ask for help at OED_Communications@employ.oregon.gov.

El Departamento de Empleo de Oregon (OED) es una agencia de igualdad de oportunidades. El OED proporciona ayuda gratuita para que usted pueda utilizar nuestros servicios. Algunos ejemplos son intérpretes de lengua de señas e idiomas hablados, materiales escritos en otros idiomas, letra grande, audio y otros formatos. Para obtener ayuda, por favor llame al 503-947-1444. Usuarios de TTY pueden llamar al 711. También puede enviar un correo electrónico a OED_Communications@employ.oregon.gov.



Workforce & Economic Research Division

QualityInfo.org

April 7, 2026

Eugene-Springfield MSA Current Labor Force and Industry Employment

	--Change From--				
	January 2026	December 2025	January 2025	December 2025	January 2025
Labor Force Status					
Civilian labor force	187,446	188,762	189,218	-1,316	-1,772
Unemployed	10,815	9,515	9,997	1,300	818
Unemployment rate	5.8%	5.0%	5.3%	0.8	0.5
<i>Unemployment rate (seasonally adjusted)</i>	5.3%	5.2%	4.5%	0.1	0.8
Employed	176,631	179,247	179,221	-2,616	-2,590
Nonfarm Payroll Employment					
Total nonfarm employment	160,900	163,300	162,800	-2,400	-1,900
<i>Total nonfarm employment (seasonally adjusted)</i>	<i>162,800</i>	<i>162,700</i>	<i>164,600</i>	<i>100</i>	<i>-1,800</i>
Total private	129,500	131,500	131,300	-2,000	-1,800
Mining, logging, and construction	7,900	8,200	8,200	-300	-300
Mining and logging	900	1,000	1,000	-100	-100
Construction	7,000	7,200	7,200	-200	-200
Manufacturing	13,700	13,800	14,100	-100	-400
Durable goods	8,900	8,900	9,100	0	-200
Wood product manufacturing	3,800	3,800	3,800	0	0
Nondurable goods	4,800	4,900	5,000	-100	-200
Trade, transportation, and utilities	27,900	28,500	28,300	-600	-400
Wholesale trade	5,700	5,700	5,900	0	-200
Retail trade	18,600	19,100	18,700	-500	-100
Transportation, warehousing, and utilities	3,600	3,700	3,700	-100	-100
Information	1,800	1,900	2,000	-100	-200
Financial activities	8,400	8,500	8,500	-100	-100
Professional and business services	16,600	17,200	17,100	-600	-500
Administrative and support services	5,800	6,000	5,900	-200	-100
Private education and health services	31,400	31,400	30,900	0	500
Health care and social assistance	29,800	29,400	28,800	400	1,000
Leisure and hospitality	16,600	16,800	16,900	-200	-300
Accommodation and food services	14,900	15,200	14,900	-300	0
Food services and drinking places	13,400	13,600	13,400	-200	0
Other services	5,200	5,200	5,300	0	-100
Government	31,400	31,800	31,500	-400	-100
Federal government	1,800	1,900	1,900	-100	-100
State government	2,100	2,100	2,000	0	100
State education	NA	NA	NA	NA	NA
Local government	27,500	27,800	27,600	-300	-100
Local education	19,000	19,400	19,400	-400	-400

The most recent month is preliminary, the prior month is revised. Prepared in cooperation with the U.S. Department of Labor, Bureau of Labor Statistics.

Civilian labor force includes employed and unemployed individuals 16 years and older by place of residence. Employed includes payroll employment, self-employed, unpaid family workers, domestics, agriculture, and labor disputants. Unemployment rate is calculated by dividing unemployed by civilian labor force.

Nonfarm Payroll Employment: Official Oregon Series. Data are by place of work and cover full- and part-time employees who worked or received pay for the pay period that includes the 12th of the month. The data exclude the self-employed, volunteers, unpaid family workers, and domestics.

###

SUPPORT BUSINESS • PROMOTE EMPLOYMENT