

FOR IMMEDIATE RELEASE: May 5, 2026

CONTACT INFORMATION:
Guy Tauer, Regional Economist
Guy.r.tauer@employ.oregon.gov
(541) 816-8396

Employment in Lane County (Eugene MSA)

Lane County Payroll Jobs Little Changed in March

Lane County's seasonally adjusted payroll employment decreased by 100 in March after a loss of 600 in February and a gain of 100 in January.

In the not seasonally adjusted private-sector industries in March, job gains were estimated in education and health services (400), mining and logging (100), and leisure and hospitality (100). Losses were posted in manufacturing (-100); transportation, warehousing, and utilities (-100); financial activities (-100); and professional and business services (-100).

Government gained 100 jobs in March due to an increase in local government education (100).

When comparing March 2026 with March 2025, total nonfarm employment dropped 1,500 jobs on a seasonally adjusted basis for a loss of 0.9%. There was a relatively large increase in health care and social assistance (1,700). There were losses in professional and business services (-600), leisure and hospitality (-500), manufacturing (-500), wholesale trade (-200), information (-200), and retail trade (-200).

There was an over-the-year loss of 400 in government in March – from losses in both local education (-600) and federal government (-100) – that was countered by a gain in noneducation local government (300).

Lane County's seasonally adjusted unemployment rate was little changed over the month at 5.2% in March. The rate was up from 4.6% in March 2025. The Oregon seasonally adjusted March rate was 5.2% and the U.S. rate was 4.3%.

Next Press Releases

The Oregon Employment Department plans to release the April county and metropolitan area unemployment rates and employment survey data on Wednesday, May 27th, and the statewide unemployment rate and employment survey data for April on Wednesday, May 20th.

The Oregon Employment Department and the U.S. Bureau of Labor Statistics (BLS) work cooperatively to develop and publish monthly payroll employment and labor force data for Oregon's metropolitan areas and counties. The estimates of monthly job gains and losses are based on a survey of businesses. The estimates of unemployment are based on a survey of households and other sources.

The Oregon Employment Department payroll employment estimates are revised quarterly using information from unemployment insurance tax records. All department publications use data from this *official Oregon series* unless noted.

The department also makes the BLS-produced nonfarm payroll employment series for metropolitan areas available. These are revised annually by BLS.

You can subscribe to receive notification of new articles and publications from QualityInfo.org. To subscribe, go to www.qualityinfo.org/subscribe, enter your email address and click Sign In. In the Publication section, click on the + sign next to a report type category and then click on the geography(s) you are interested in. Take some time to browse the other publications on the page and see if there are some you'd like to receive an email notification for. You can receive notifications on a daily, weekly, or monthly schedule – whichever is most convenient for you. You can change your preferences – or unsubscribe – at any time.

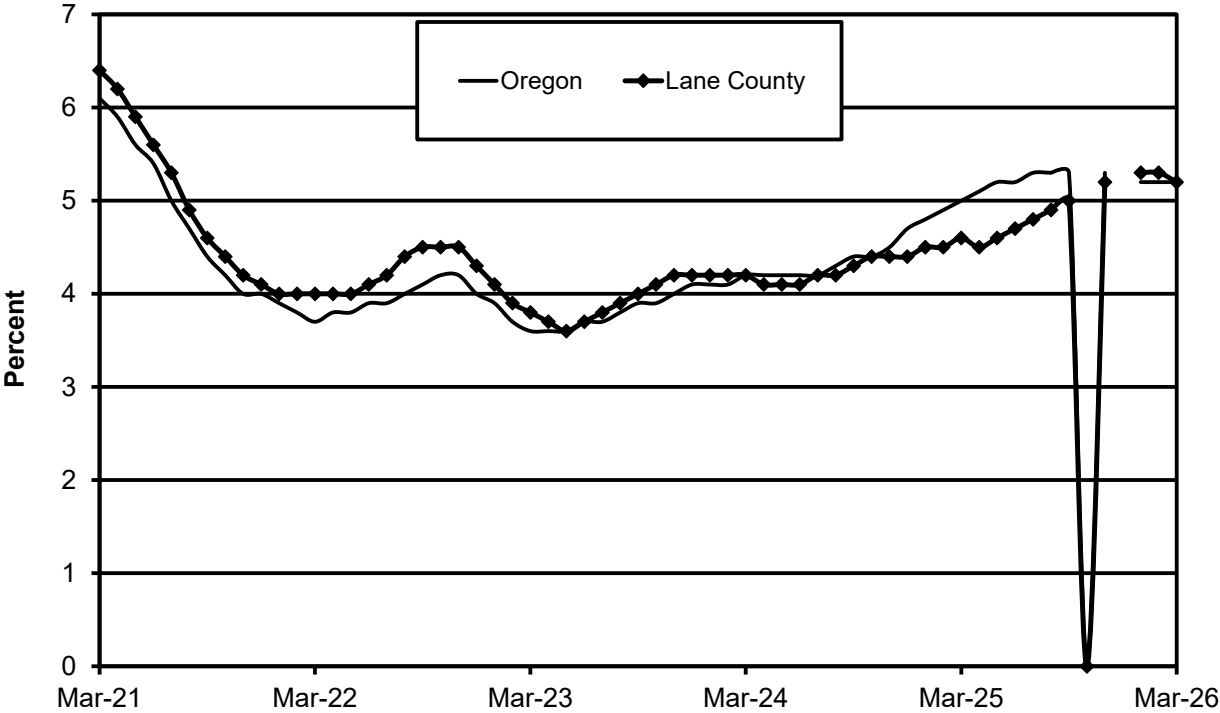
The pdf version of the news release, including tables and graphs, can be found at www.qualityinfo.org/press-release/. To obtain the data in other formats such as in Excel, visit QualityInfo.org, select Tools, and choose LAUS or CES from the dropdown menu. To request the press release as a Word document, contact the person shown at the top of this press release.

To file an Unemployment Insurance claim, visit our online claims system or call our contact centers, where Employment Department staff are ready to help by phone, at 1-877-FILE-4-UI (1-877-345-3484). For help finding jobs and training resources, go to: www.WorkSourceOregon.org.

The Oregon Employment Department (OED) is an equal opportunity agency. Everyone has a right to use OED programs and services. OED provides free help. Some examples are: Sign language and spoken language interpreters, written materials in other languages, braille, large print, audio and other formats. If you need help, please call 971-673-6400. TTY users call 711. You can also ask for help at OED_Communications@employ.oregon.gov.

El Departamento de Empleo de Oregon (OED) es una agencia de igualdad de oportunidades. El OED proporciona ayuda gratuita para que usted pueda utilizar nuestros servicios. Algunos ejemplos son intérpretes de lengua de señas e idiomas hablados, materiales escritos en otros idiomas, letra grande, audio y otros formatos. Para obtener ayuda, por favor llame al 503-947-1444. Usuarios de TTY pueden llamar al 711. También puede enviar un correo electrónico a OED_Communications@employ.oregon.gov.

Seasonally Adjusted Unemployment Rates





Workforce & Economic Research Division

QualityInfo.org

May 5, 2026

Eugene-Springfield MSA Current Labor Force and Industry Employment

	--Change From--				
	March 2026	February 2026	March 2025	February 2026	March 2025
Labor Force Status					
Civilian labor force	189,083	189,111	189,972	-28	-889
Unemployed	9,725	10,577	9,661	-852	64
Unemployment rate	5.1%	5.6%	5.1%	-0.5	0.0
<i>Unemployment rate (seasonally adjusted)</i>	5.2%	5.3%	4.6%	-0.1	0.6
Employed	179,358	178,534	180,311	824	-953
Nonfarm Payroll Employment					
Total nonfarm employment	162,000	161,700	163,900	300	-1,900
<i>Total nonfarm employment (seasonally adjusted)</i>	<i>162,400</i>	<i>162,500</i>	<i>163,900</i>	<i>-100</i>	<i>-1,500</i>
Total private	130,200	130,000	131,700	200	-1,500
Mining, logging, and construction	8,100	8,000	8,100	100	0
Mining and logging	1,000	900	900	100	100
Construction	7,100	7,100	7,200	0	-100
Manufacturing	13,600	13,700	14,100	-100	-500
Durable goods	8,800	8,900	9,100	-100	-300
Wood product manufacturing	3,800	3,800	3,800	0	0
Nondurable goods	4,800	4,800	5,000	0	-200
Trade, transportation, and utilities	27,600	27,700	28,200	-100	-600
Wholesale trade	5,700	5,700	5,900	0	-200
Retail trade	18,500	18,500	18,700	0	-200
Transportation, warehousing, and utilities	3,400	3,500	3,600	-100	-200
Information	1,800	1,800	2,000	0	-200
Financial activities	8,400	8,500	8,500	-100	-100
Professional and business services	16,600	16,700	17,200	-100	-600
Administrative and support services	5,800	5,800	6,000	0	-200
Private education and health services	32,200	31,800	31,100	400	1,100
Health care and social assistance	30,600	30,400	28,900	200	1,700
Leisure and hospitality	16,700	16,600	17,200	100	-500
Accommodation and food services	14,900	14,800	15,200	100	-300
Food services and drinking places	13,400	13,300	13,700	100	-300
Other services	5,200	5,200	5,300	0	-100
Government	31,800	31,700	32,200	100	-400
Federal government	1,800	1,800	1,900	0	-100
State government	2,100	2,100	2,100	0	0
State education	NA	NA	NA	NA	NA
Local government	27,900	27,800	28,200	100	-300
Local education	19,400	19,300	20,000	100	-600

The most recent month is preliminary, the prior month is revised. Prepared in cooperation with the U.S. Department of Labor, Bureau of Labor Statistics.

Civilian labor force includes employed and unemployed individuals 16 years and older by place of residence. Employed includes payroll employment, self-employed, unpaid family workers, domestics, agriculture, and labor disputants. Unemployment rate is calculated by dividing unemployed by civilian labor force.

Nonfarm Payroll Employment: Official Oregon Series. Data are by place of work and cover full- and part-time employees who worked or received pay for the pay period that includes the 12th of the month. The data exclude the self-employed, volunteers, unpaid family workers, and domestics.

###

SUPPORT BUSINESS • PROMOTE EMPLOYMENT