

FOR IMMEDIATE RELEASE: June 24, 2025

CONTACT INFORMATION:

Brian Rooney, Regional Economist
brian.t.rooney@employ.oregon.gov
(541) 359-9546

Employment in Lane County (Eugene MSA)

Lane County Employment Held Steady in May

Lane County's seasonally adjusted payroll employment held steady in May after losses of 200 in April and 700 in March.

In the not seasonally adjusted private-sector industries in May, there was a large seasonal gain in leisure and hospitality (800). There was an additional gain of 400 in health care and social assistance. These gains were countered by small losses in construction (-100) and manufacturing (-100).

Government gained 300 jobs in May from a gain of 200 in local education and a gain of 100 in federal government.

When comparing May 2025 with May 2024, total nonfarm employment dropped 300 jobs on a seasonally adjusted basis for a loss of 0.2%. There were relatively large gains in private education and health services (1,200) and leisure and hospitality (500). There were relatively large losses in retail trade (-600), manufacturing (-500), construction (-400) and professional and business services (-400).

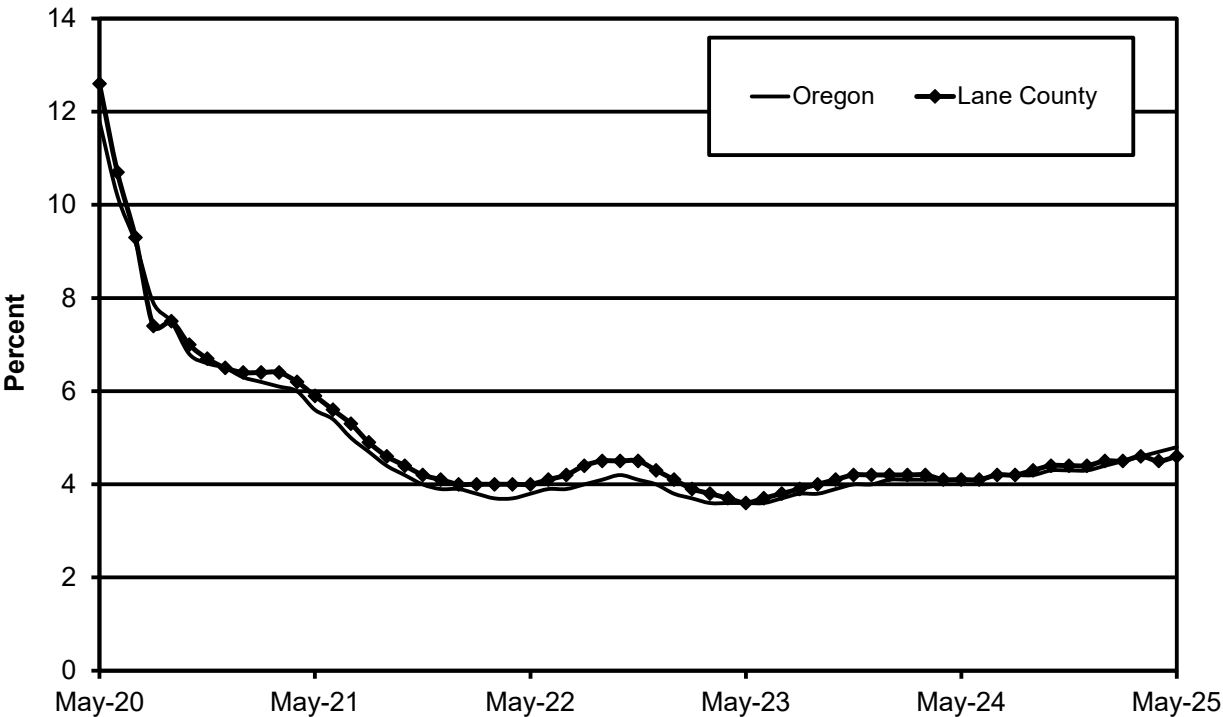
There was an over-the-year increase of 1,000 in government due to gains in local education (800), which includes the University of Oregon, state government (100), and noneducation local government (100).

Lane County's seasonally adjusted unemployment rate was essentially unchanged at 4.6% in May compared with a revised 4.5% in April. The rate is up significantly from the 4.1% recorded in May of 2024. Lane County's record low rate was 3.5% in November 2019. The Oregon seasonally adjusted November rate was 4.8% and the U.S. rate was 4.2%.

Next Press Releases

The Oregon Employment Department plans to release the June county and metropolitan area unemployment rates on Tuesday, July 22, and the next statewide unemployment rate and employment survey data for June on Wednesday, July 16.

Seasonally Adjusted Unemployment Rates





Workforce & Economic Research Division

QualityInfo.org

June 24, 2025

Eugene-Springfield MSA Current Labor Force and Industry Employment

	--Change From--				
	May 2025	April 2025	May 2024	April 2025	May 2024
Labor Force Status					
Civilian labor force	190,062	188,915	189,256	1,147	806
Unemployed	8,587	7,346	6,976	1,241	1,611
Unemployment rate	4.5%	3.9%	3.7%	0.6	0.8
<i>Unemployment rate (seasonally adjusted)</i>	4.6%	4.5%	4.1%	0.1	0.5
Employed	181,475	181,569	182,280	-94	-805
Nonfarm Payroll Employment					
Total nonfarm employment	166,900	165,400	166,900	1,500	0
<i>Total nonfarm employment (seasonally adjusted)</i>	<i>164,600</i>	<i>164,600</i>	<i>164,900</i>	<i>0</i>	<i>-300</i>
Total private	133,600	132,400	134,600	1,200	-1,000
Mining, logging, and construction	8,100	8,200	8,700	-100	-600
Mining and logging	800	800	1,000	0	-200
Construction	7,300	7,400	7,700	-100	-400
Manufacturing	14,000	14,100	14,500	-100	-500
Durable goods	9,000	9,000	9,300	0	-300
Wood product manufacturing	3,800	3,800	3,700	0	100
Nondurable goods	5,000	5,100	5,200	-100	-200
Trade, transportation, and utilities	28,400	28,300	29,200	100	-800
Wholesale trade	5,900	5,900	6,200	0	-300
Retail trade	18,700	18,700	19,300	0	-600
Food and beverage retailers	4,800	4,800	4,900	0	-100
Transportation, warehousing, and utilities	3,800	3,700	3,700	100	100
Information	2,000	2,000	2,000	0	0
Financial activities	8,800	8,800	9,100	0	-300
Professional and business services	17,400	17,300	17,800	100	-400
Administrative and support services	6,300	6,300	6,700	0	-400
Private education and health services	31,400	31,000	30,200	400	1,200
Health care and social assistance	29,200	28,800	28,100	400	1,100
Leisure and hospitality	18,400	17,600	17,900	800	500
Accommodation and food services	16,000	15,400	15,700	600	300
Food services and drinking places	14,400	13,900	14,100	500	300
Other services	5,100	5,100	5,200	0	-100
Government	33,300	33,000	32,300	300	1,000
Federal government	2,000	1,900	2,000	100	0
State government	2,100	2,100	2,000	0	100
State education	0	0	0	0	0
Local government	29,200	29,000	28,300	200	900
Local education	21,000	20,800	20,200	200	800

The most recent month is preliminary, the prior month is revised. Prepared in cooperation with the U.S. Department of Labor, Bureau of Labor Statistics.

Civilian labor force includes employed and unemployed individuals 16 years and older by place of residence.

Employed includes payroll employment, self-employed, unpaid family workers, domestics, agriculture, and labor disputants.

Unemployment rate is calculated by dividing unemployed by civilian labor force.

Nonfarm Payroll Employment: Official Oregon Series. Data are by place of work and cover full- and part-time employees who worked or received pay for the pay period that includes the 12th of the month. The data exclude the self-employed, volunteers, unpaid family workers, and domestics.

The Oregon Employment Department and the U.S. Bureau of Labor Statistics (BLS) work cooperatively to develop and publish monthly payroll employment and labor force data for Oregon's metropolitan areas and counties. The estimates of monthly job gains and losses are based on a survey of businesses. The estimates of unemployment are based on a survey of households and other sources.

The Oregon Employment Department payroll employment estimates are revised quarterly using information from unemployment insurance tax records. All department publications use data from this *official Oregon series* unless noted.

The department also makes the BLS-produced nonfarm payroll employment series for metropolitan areas available. These are revised annually by BLS.

You can subscribe to receive notification of new articles and publications from QualityInfo.org. To subscribe, go to www.qualityinfo.org/subscribe, enter your email address and click Sign In. In the Publication section, click on the + sign next to a report type category and then click on the geography(s) you are interested in. Take some time to browse the other publications on the page and see if there are some you'd like to receive an email notification for. You can receive notifications on a daily, weekly, or monthly schedule – whichever is most convenient for you. You can change your preferences – or unsubscribe – at any time.

The pdf version of the news release, including tables and graphs, can be found at www.qualityinfo.org/press-release/. To obtain the data in other formats such as in Excel, visit QualityInfo.org, select Tools, and choose LAUS or CES from the dropdown menu. To request the press release as a Word document, contact the person shown at the top of this press release.

To file an Unemployment Insurance claim, visit our online claims system or call our contact centers, where Employment Department staff are ready to help by phone, at 1-877-FILE-4-UI (1-877-345-3484). For help finding jobs and training resources, go to: www.WorkSourceOregon.org.

The Oregon Employment Department (OED) is an equal opportunity agency. Everyone has a right to use OED programs and services. OED provides free help. Some examples are: Sign language and spoken language interpreters, written materials in other languages, braille, large print, audio and other formats. If you need help, please call 971-673-6400. TTY users call 711. You can also ask for help at OED_Communications@employ.oregon.gov.

El Departamento de Empleo de Oregon (OED) es una agencia de igualdad de oportunidades. El OED proporciona ayuda gratuita para que usted pueda utilizar nuestros servicios. Algunos ejemplos son intérpretes de lengua de señas e idiomas hablados, materiales escritos en otros idiomas, letra grande, audio y otros formatos. Para obtener ayuda, por favor llame al 503-947-1444. Usuarios de TTY pueden llamar al 711. También puede enviar un correo electrónico a OED_Communications@employ.oregon.gov.

###