

FOR IMMEDIATE RELEASE: Dec. 16, 2025

CONTACT INFORMATION:

Brian Rooney, Regional Economist  
brian.t.rooney@employ.oregon.gov  
(541) 359-9546

## **Employment in Lane County (Eugene MSA)**

### **Lane County's Unemployment Rate Was 5.0% in September**

Lane County's seasonally adjusted unemployment rate was 5.0% in September compared with a revised 4.9% in August. The rate has increased significantly from the recent low of 3.6% recorded in May of 2023. Lane County's record low rate was 3.5% in November 2019. The Oregon seasonally adjusted September rate was 5.2% and the U.S. rate was 4.4%.

Lane County's seasonally adjusted payroll employment decreased by 400 in September after a gain of 1,200 in August and a loss of 1,000 in July.

In the not seasonally adjusted private-sector industries in September, there was a gain of 100 in manufacturing. There were relatively large losses in leisure and hospitality (-600) and private education and health services (-400).

Government gained 1,400 jobs in September due to a seasonal gain of 1,800 in local education from the start of a new school year that was countered by a loss of 400 in noneducation local government.

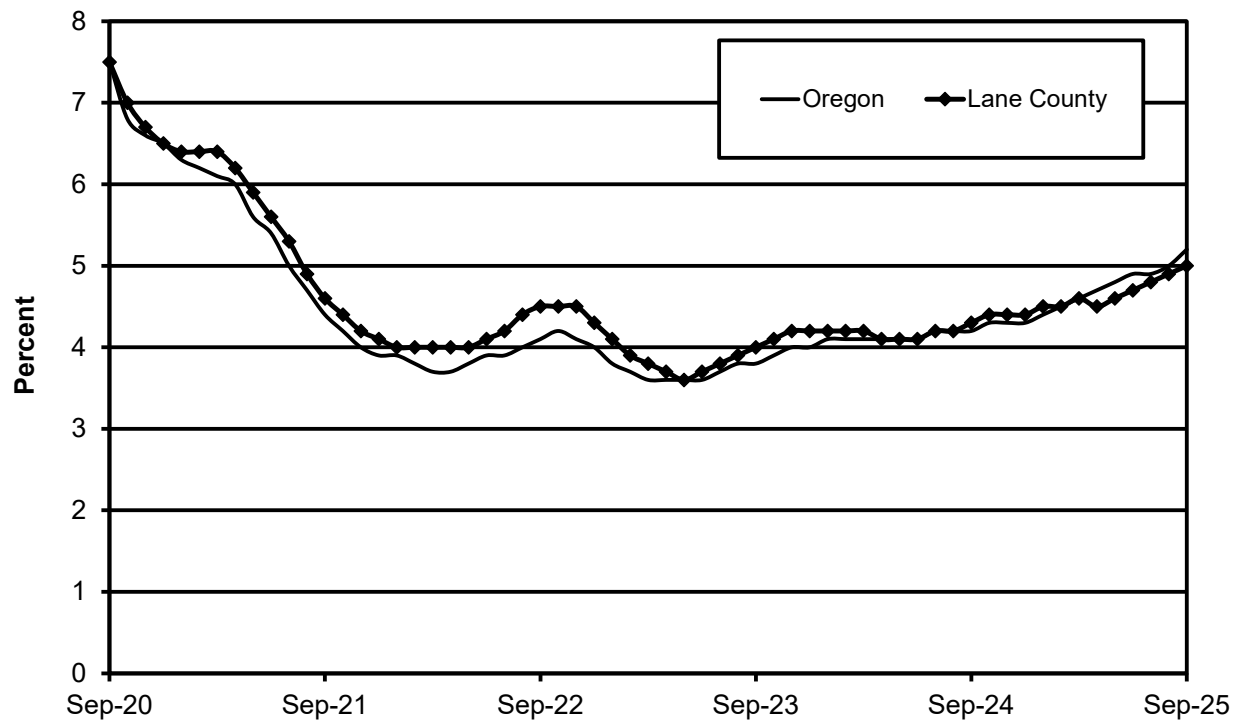
When comparing September 2025 with September 2024, total nonfarm employment dropped 900 jobs on a seasonally adjusted basis for a loss of 0.5%. There were gains in private education and health services (900), leisure and hospitality (500), and other services (200). There were relatively large losses in professional and business services (-900), wholesale trade (-300), and financial activities (-300).

There was an over-the-year loss of 500 in government in September from a loss of 300 in local education and an additional loss of 200 in noneducation local government.

### **Next Press Releases**

The Oregon Employment Department plans to release the October and November county and metropolitan area unemployment rate and employment survey data on Tuesday, Jan. 13, and the statewide unemployment rate and employment survey data for October and November on Wednesday, Jan. 7.

## Seasonally Adjusted Unemployment Rates





Workforce &amp; Economic Research Division

QualityInfo.org

December 16, 2025

### Eugene-Springfield MSA Current Labor Force and Industry Employment

	September		August		--Change From--	
	2025	2025	September 2024	August 2025	September 2024	2024
<b>Labor Force Status</b>						
Civilian labor force	189,626	189,281	187,046	345	2,580	
Unemployed	10,084	10,437	7,617	-353	2,467	
Unemployment rate	5.3%	5.5%	4.1%	-0.2	1.2	
<i>Unemployment rate (seasonally adjusted)</i>	<i>5.0%</i>	<i>4.9%</i>	<i>4.3%</i>	<i>0.1</i>	<i>0.7</i>	
Employed	179,542	178,844	179,429	698	113	
<b>Nonfarm Payroll Employment</b>						
Total nonfarm employment	162,200	162,100	163,200	100	-1,000	
<i>Total nonfarm employment (seasonally adjusted)</i>	<i>163,700</i>	<i>164,100</i>	<i>164,600</i>	<i>-400</i>	<i>-900</i>	
Total private	134,000	135,300	134,500	-1,300	-500	
Mining, logging, and construction	8,500	8,600	8,700	-100	-200	
Mining and logging	1,000	1,000	1,000	0	0	
Construction	7,500	7,600	7,700	-100	-200	
Manufacturing	14,200	14,100	14,400	100	-200	
Durable goods	9,100	9,100	9,300	0	-200	
Wood product manufacturing	3,800	3,800	3,800	0	0	
Nondurable goods	5,100	5,000	5,100	100	0	
Trade, transportation, and utilities	28,400	28,400	28,900	0	-500	
Wholesale trade	5,900	5,900	6,200	0	-300	
Retail trade	18,900	18,900	19,000	0	-100	
Food and beverage retailers	4,800	4,800	4,900	0	-100	
Transportation, warehousing, and utilities	3,600	3,600	3,700	0	-100	
Information	2,000	2,000	2,000	0	0	
Financial activities	8,700	8,800	9,000	-100	-300	
Professional and business services	17,400	17,500	18,300	-100	-900	
Administrative and support services	6,600	6,600	7,100	0	-500	
Private education and health services	31,400	31,800	30,500	-400	900	
Health care and social assistance	29,100	29,400	28,400	-300	700	
Leisure and hospitality	18,000	18,600	17,500	-600	500	
Accommodation and food services	15,800	16,200	15,500	-400	300	
Food services and drinking places	14,100	14,400	13,900	-300	200	
Other services	5,400	5,500	5,200	-100	200	
Government	28,200	26,800	28,700	1,400	-500	
Federal government	2,000	2,000	2,000	0	0	
State government	2,100	2,100	2,100	0	0	
State education	0	0	0	0	0	
Local government	24,100	22,700	24,600	1,400	-500	
Local education	16,200	14,400	16,500	1,800	-300	

The most recent month is preliminary, the prior month is revised. Prepared in cooperation with the U.S. Department of Labor, Bureau of Labor Statistics.

Civilian labor force includes employed and unemployed individuals 16 years and older by place of residence.

Employed includes payroll employment, self-employed, unpaid family workers, domestics, agriculture, and labor disputants.

Unemployment rate is calculated by dividing unemployed by civilian labor force.

Nonfarm Payroll Employment: Official Oregon Series. Data are by place of work and cover full- and part-time employees who worked or received pay for the pay period that includes the 12th of the month. The data exclude the self-employed, volunteers, unpaid family workers, and domestics.

The Oregon Employment Department and the U.S. Bureau of Labor Statistics (BLS) work cooperatively to develop and publish monthly payroll employment and labor force data for Oregon's metropolitan areas and counties. The estimates of monthly job gains and losses are based on a survey of businesses. The estimates of unemployment are based on a survey of households and other sources.

The Oregon Employment Department payroll employment estimates are revised quarterly using information from unemployment insurance tax records. All department publications use data from this *official Oregon series* unless noted.

The department also makes the BLS-produced nonfarm payroll employment series for metropolitan areas available. These are revised annually by BLS.

You can subscribe to receive notification of new articles and publications from QualityInfo.org. To subscribe, go to [www.qualityinfo.org/subscribe](http://www.qualityinfo.org/subscribe), enter your email address and click Sign In. In the Publication section, click on the + sign next to a report type category and then click on the geography(s) you are interested in. Take some time to browse the other publications on the page and see if there are some you'd like to receive an email notification for. You can receive notifications on a daily, weekly, or monthly schedule – whichever is most convenient for you. You can change your preferences – or unsubscribe – at any time.

The pdf version of the news release, including tables and graphs, can be found at [www.qualityinfo.org/press-release/](http://www.qualityinfo.org/press-release/). To obtain the data in other formats such as in Excel, visit QualityInfo.org, select Tools, and choose LAUS or CES from the dropdown menu. To request the press release as a Word document, contact the person shown at the top of this press release.

To file an Unemployment Insurance claim, visit our online claims system or call our contact centers, where Employment Department staff are ready to help by phone, at 1-877-FILE-4-UI (1-877-345-3484). For help finding jobs and training resources, go to: [www.WorkSourceOregon.org](http://www.WorkSourceOregon.org).

The Oregon Employment Department (OED) is an equal opportunity agency. Everyone has a right to use OED programs and services. OED provides free help. Some examples are: Sign language and spoken language interpreters, written materials in other languages, braille, large print, audio and other formats. If you need help, please call 971-673-6400. TTY users call 711. You can also ask for help at [OED\\_Communications@employ.oregon.gov](mailto:OED_Communications@employ.oregon.gov).

El Departamento de Empleo de Oregon (OED) es una agencia de igualdad de oportunidades. El OED proporciona ayuda gratuita para que usted pueda utilizar nuestros servicios. Algunos ejemplos son intérpretes de lengua de señas e idiomas hablados, materiales escritos en otros idiomas, letra grande, audio y otros formatos. Para obtener ayuda, por favor llame al 503-947-1444. Usuarios de TTY pueden llamar al 711. También puede enviar un correo electrónico a [OED\\_Communications@employ.oregon.gov](mailto:OED_Communications@employ.oregon.gov).

###