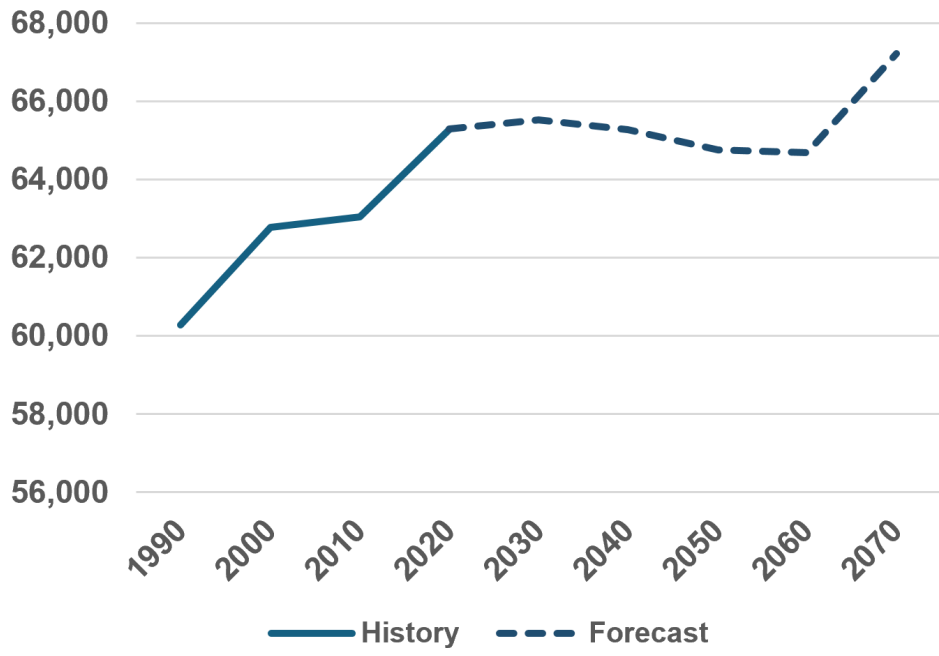


Special Topic: Population History & Forecasts



Coos County's population in 1990 was 60,273. Thirty years later it had grown to 65,280, an increase of 3.5%.

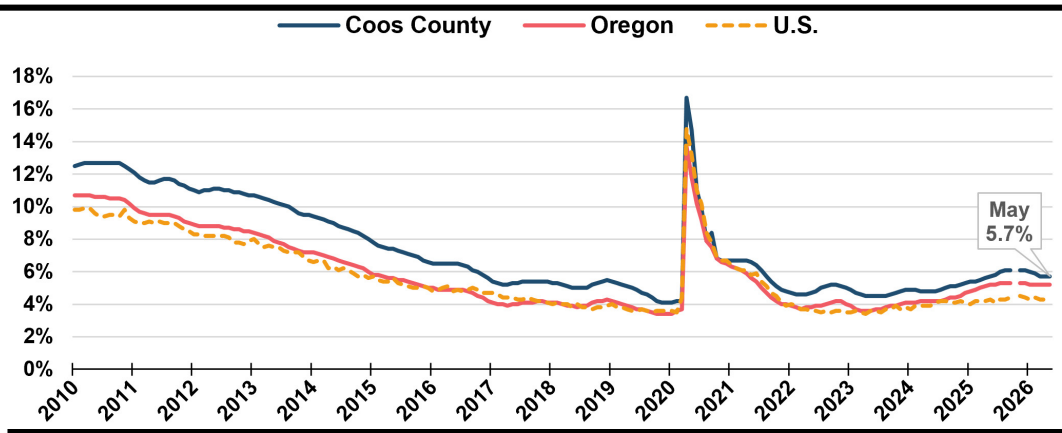
The county's population is projected to level off over the next five years, then decrease starting in 2030 through 2060 by 835 residents (-1.3%). Starting in 2060 this decline is expected to reverse, adding another 2,540 residents (3.9%) by 2070.

Source: Portland State University, Population Research Center

Unemployment Rate - 5.7%

- The unemployment rate in May 2025 was 5.7%
- The seasonally adjusted unemployment rate has ranged from 5.7% to 6.1% over the year

Local Area Unemployment

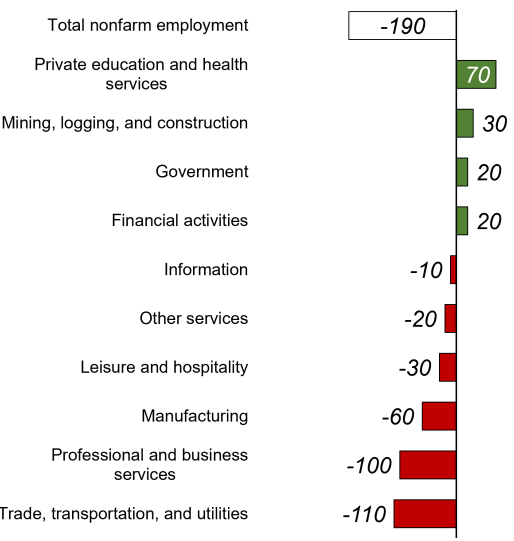


Industry Employment Change May 2025 to May 2026

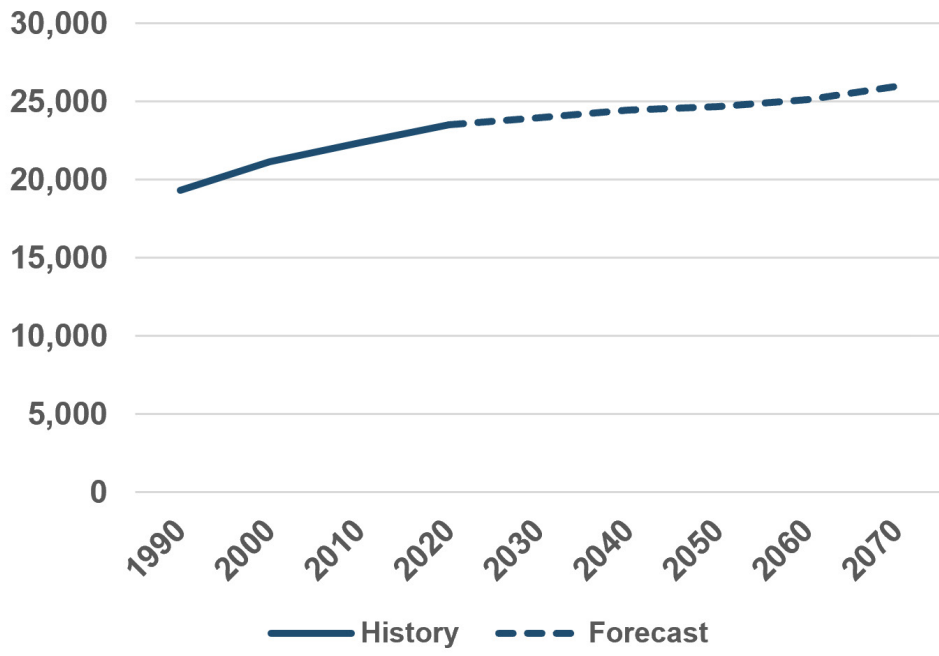
- Coos County lost 190 jobs over the year
- Payroll employment down 0.8% over the year
- Private education and health services added 70 jobs
- Trade, transportation, and utilities lost 110 jobs

Click [here](#) for the detailed May Employment Press Release

[Current Employment Statistics](#)



Special Topic: Population History & Forecasts



Curry County's population in 1990 was 19,327. Thirty years later it had grown to 23,512, an increase of 21.7%.

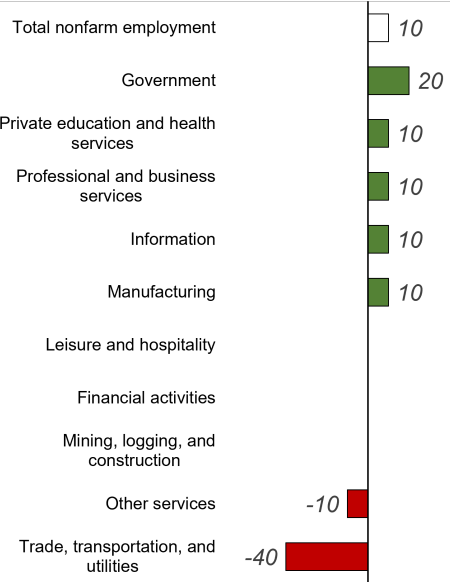
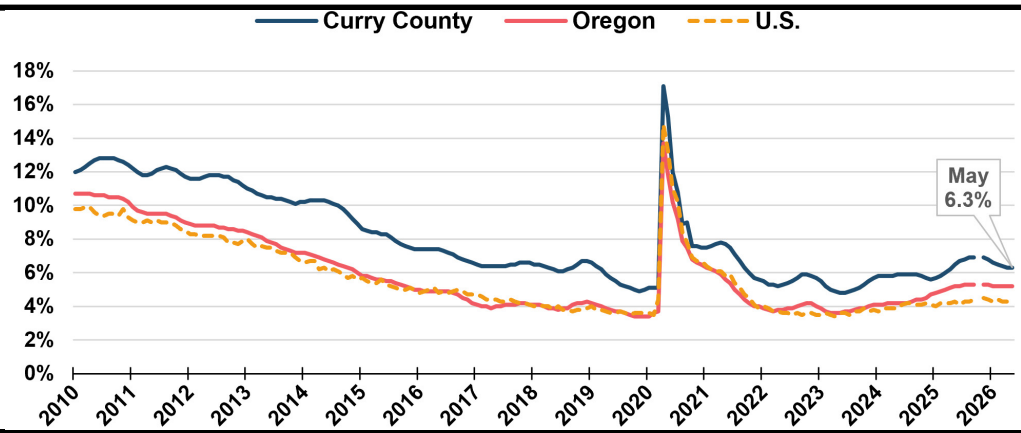
The county's population is projected to increase slowly through 2070 adding roughly 500 residents each decade. By 2070 it's expected that 25,968 people will live in Curry County adding 2,456 (10.4%) from 2020 to 2070.

Source: Portland State University, Population Research Center

Unemployment Rate - 6.3%

- The unemployment rate in May 2025 was 6.5%
- The seasonally adjusted unemployment rate has ranged from 6.3% to 6.9% over the year

Local Area Unemployment

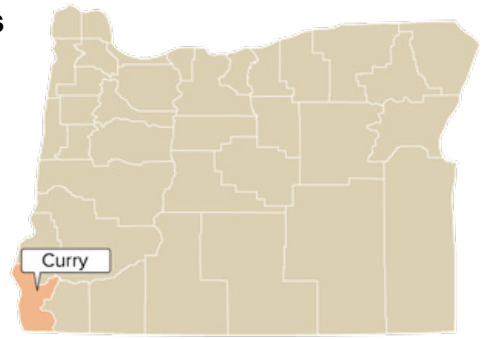


Industry Employment Change May 2025 to May 2026

- Curry County gained 10 jobs over the year
- Payroll employment up 0.2% over the year
- Government added 20 jobs
- Trade, transportation, and utilities lost 40 jobs

Click [here](#) for the detailed May Employment Press Release

[Current Employment Statistics](#)

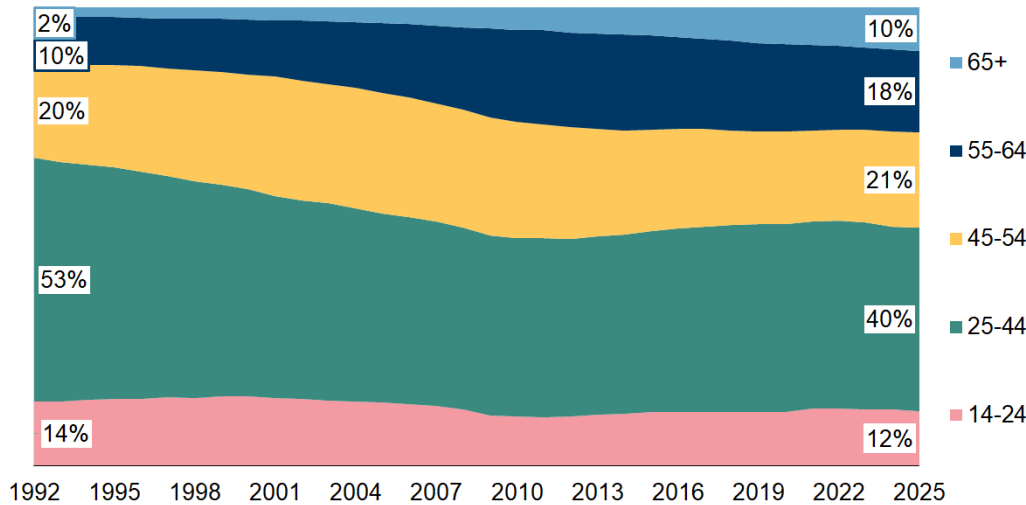


DOUGLAS COUNTY ECONOMIC INDICATORS

June 2026

Graph of the Month: As in most places in the U.S. and Oregon, the population is aging, and with it the workforce. The proportion of workers under age 45 has declined by 15 percentage points since 1992, with a corresponding increase in workers over 55, and especially over 65.

Proportion of Douglas Workforce by Age, 1992-2025



Source: U.S. Census Bureau, Quarterly Workforce Indicators

Notable Over-the-Year Employment Changes

May 2025 to May 2026

Private Education and Health Services: 100 (+1%)	Retail Trade: -140 (-3%)
Construction: -70 (-4%)	Manufacturing: -210 (-5%)
Total nonfarm employment, seasonally adjusted: -270 (-1%)	
Employment change from February 2020 (<u>seasonally adjusted</u>): -1,120 (-3%)	

Source: [Oregon Employment Department Current Employment Estimates](#)

News and Articles

QualityInfo: [Oregon's Youth in the Labor Force](#) by Nelson Gomes

QualityInfo: [Oregon's Aging Workforce by Industry and County in 2024](#) by Gail Krumenauer

QualityInfo: [Employment and Economic Impact of Oregon's Arts, Entertainment, and Recreation Industry](#) by Nelson Gomes

Latest Douglas County Economic Data

May 2026 seasonally adjusted unemployment rate: [6.2%](#)

Change from previous year: [+0.1 pct. points](#)

Total Help Wanted Online (HWOL) job ads, May 2026: [1,630](#)

Net establishment change in Oregon, 2024 Q4: [-487](#)

Percentage of jobs paying minimum wage, 2025 Q3: [4.0%](#)

Business highlights: [new openings, closings & hiring events](#)

- **New Firm:** Timber Tots Trading Company, a secondhand store, opened in Roseburg.
- **New Firm:** Boys & Girls Club of the Umpqua Valley opened in Roseburg.

[QualityInfo.org](#): your source for the latest economic data, highlights and analysis

Manage your subscriptions to this newsletter and other data releases on our [subscription page](#).