

FOR IMMEDIATE RELEASE: June 23, 2026

CONTACT INFORMATION:
Henry Fields, Regional Economist
henry.l.fields@employ.oregon.gov
(541) 359-9546

Employment in Lane County (Eugene MSA)

Lane County Employment Declines Slightly Over the Year

Lane County's seasonally adjusted payroll employment decreased by 1,100 jobs in the year to May 2026, for a loss of 0.7%.

Private education and health services saw the largest job gains over the year (2,200). There were losses in professional and business services (-1,200), manufacturing (-400), financial activities (-300), retail trade (-300), information (-300), wholesale trade (-200), and leisure and hospitality (-200).

There was an over-the-year loss of 500 in government in May stemming from declines in both local education (-400) and federal government (-100).

The monthly change to employment was a loss of 400 jobs in May after a gain of 100 in April and a loss of 600 in March.

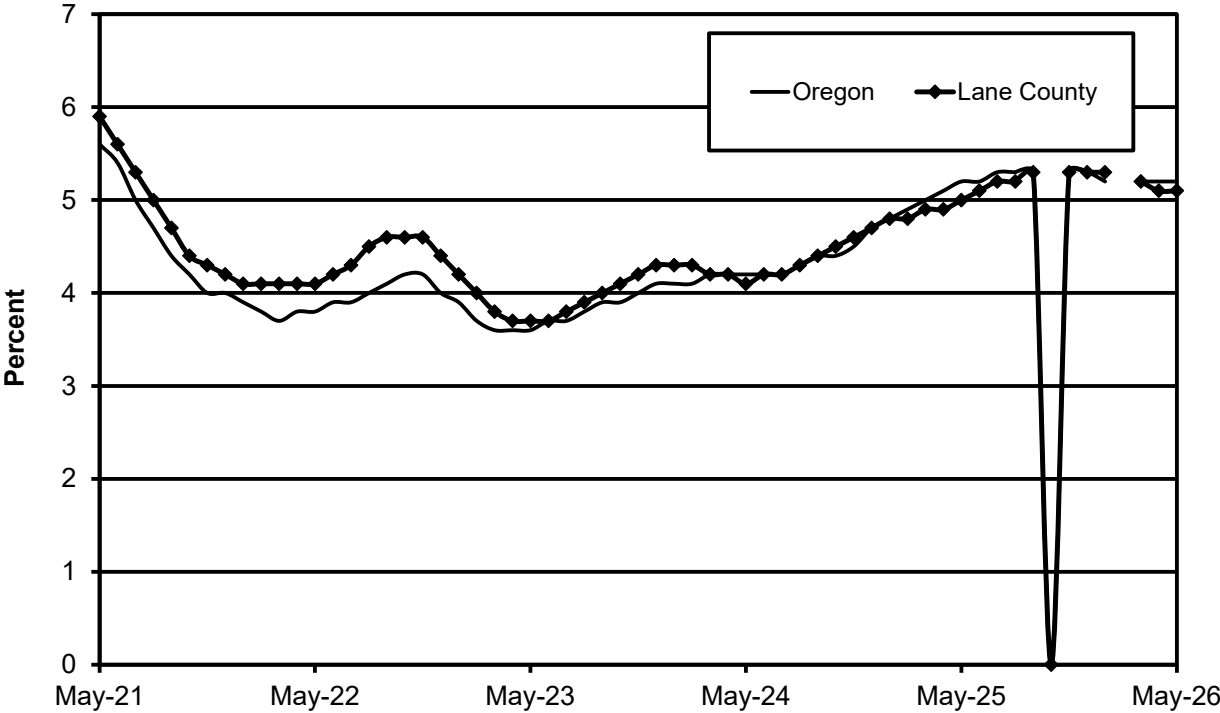
In the not seasonally adjusted private-sector industries in May, job gains were estimated in private leisure and hospitality (500), and professional and business services (200). Job losses were posted in health care and social assistance (-600), with most other industries unchanged over the month.

Lane County's seasonally adjusted unemployment rate was little changed over the month, standing at 5.1% in May, the same as in April. The rate was up from 4.7% in May 2025. The Oregon seasonally adjusted unemployment rate in May was 5.2% and the U.S. rate was 4.3%.

Next Press Releases

The Oregon Employment Department plans to release the June county and metropolitan area unemployment rates and employment survey data on Tuesday, July 21st, and the statewide unemployment rate and employment survey data for June on Wednesday, July 15th.

Seasonally Adjusted Unemployment Rates



The Oregon Employment Department and the U.S. Bureau of Labor Statistics (BLS) work cooperatively to develop and publish monthly payroll employment and labor force data for Oregon's metropolitan areas and counties. The estimates of monthly job gains and losses are based on a survey of businesses. The estimates of unemployment are based on a survey of households and other sources.

The Oregon Employment Department payroll employment estimates are revised quarterly using information from unemployment insurance tax records. All department publications use data from this *official Oregon series* unless noted.

The department also makes the BLS-produced nonfarm payroll employment series for metropolitan areas available. These are revised annually by BLS.

You can subscribe to receive notification of new articles and publications from QualityInfo.org. To subscribe, go to www.qualityinfo.org/subscribe, enter your email address and click Sign In. In the Publication section, click on the + sign next to a report type category and then click on the geography(s) you are interested in. Take some time to browse the other publications on the page and see if there are some you'd like to receive an email notification for. You can receive notifications on a daily, weekly, or monthly schedule – whichever is most convenient for you. You can change your preferences – or unsubscribe – at any time.

The pdf version of the news release, including tables and graphs, can be found at www.qualityinfo.org/press-release/. To obtain the data in other formats such as in Excel, visit QualityInfo.org, select Tools, and choose LAUS or CES from the dropdown menu. To request the press release as a Word document, contact the person shown at the top of this press release.

To file an Unemployment Insurance claim, visit our online claims system or call our contact centers, where Employment Department staff are ready to help by phone, at 1-877-FILE-4-UI (1-877-345-3484). For help finding jobs and training resources, go to: www.WorkSourceOregon.org.

The Oregon Employment Department (OED) is an equal opportunity agency. Everyone has a right to use OED programs and services. OED provides free help. Some examples are: Sign language and spoken language interpreters, written materials in other languages, braille, large print, audio and other formats. If you need help, please call 971-673-6400. TTY users call 711. You can also ask for help at OED_Communications@employ.oregon.gov.

El Departamento de Empleo de Oregon (OED) es una agencia de igualdad de oportunidades. El OED proporciona ayuda gratuita para que usted pueda utilizar nuestros servicios. Algunos ejemplos son intérpretes de lengua de señas e idiomas hablados, materiales escritos en otros idiomas, letra grande, audio y otros formatos. Para obtener ayuda, por favor llame al 503-947-1444. Usuarios de TTY pueden llamar al 711. También puede enviar un correo electrónico a OED_Communications@employ.oregon.gov.



Workforce & Economic Research Division

QualityInfo.org

June 23, 2026

Eugene-Springfield MSA Current Labor Force and Industry Employment

	--Change From--				
	May 2026	April 2026	May 2025	April 2026	May 2025
Labor Force Status					
Civilian labor force	189,731	188,568	189,919	1,163	-188
Unemployed	9,120	8,726	9,009	394	111
Unemployment rate	4.8%	4.6%	4.7%	0.2	0.1
<i>Unemployment rate (seasonally adjusted)</i>	5.1%	5.1%	5.0%	0.0	0.1
Employed	180,611	179,842	180,910	769	-299
Nonfarm Payroll Employment					
Total nonfarm employment	164,500	163,600	166,000	900	-1,500
<i>Total nonfarm employment (seasonally adjusted)</i>	162,500	162,900	163,600	-400	-1,100
Total private	132,700	132,300	133,700	400	-1,000
Mining, logging, and construction	8,300	8,300	8,300	0	0
Mining and logging	900	900	1,000	0	-100
Construction	7,400	7,400	7,300	0	100
Manufacturing	13,700	13,700	14,100	0	-400
Durable goods	8,900	8,900	9,000	0	-100
Wood product manufacturing	3,900	3,900	3,800	0	100
Nondurable goods	4,800	4,800	5,100	0	-300
Trade, transportation, and utilities	27,800	27,800	28,300	0	-500
Wholesale trade	5,700	5,700	5,900	0	-200
Retail trade	18,600	18,600	18,900	0	-300
Transportation, warehousing, and utilities	3,500	3,500	3,500	0	0
Information	1,800	1,800	1,900	0	-100
Financial activities	8,300	8,200	8,600	100	-300
Professional and business services	16,200	16,000	17,400	200	-1,200
Administrative and support services	6,000	5,900	6,300	100	-300
Private education and health services	33,300	33,800	31,600	-500	1,700
Health care and social assistance	31,700	32,300	29,300	-600	2,400
Leisure and hospitality	17,900	17,400	18,100	500	-200
Accommodation and food services	15,500	15,200	15,900	300	-400
Food services and drinking places	14,000	13,700	14,200	300	-200
Other services	5,400	5,300	5,400	100	0
Government	31,800	31,300	32,300	500	-500
Federal government	1,800	1,700	1,900	100	-100
State government	2,100	2,100	2,100	0	0
State education	NA	NA	NA	NA	NA
Local government	27,900	27,500	28,300	400	-400
Local education	19,500	19,200	20,000	300	-500

The most recent month is preliminary, the prior month is revised. Prepared in cooperation with the U.S. Department of Labor, Bureau of Labor Statistics.

Civilian labor force includes employed and unemployed individuals 16 years and older by place of residence.

Employed includes payroll employment, self-employed, unpaid family workers, domestics, agriculture, and labor disputants.

Unemployment rate is calculated by dividing unemployed by civilian labor force.

Nonfarm Payroll Employment: Official Oregon Series. Data are by place of work and cover full- and part-time employees who worked or received pay for the pay period that includes the 12th of the month. The data exclude the self-employed, volunteers, unpaid family workers, and domestics.

###