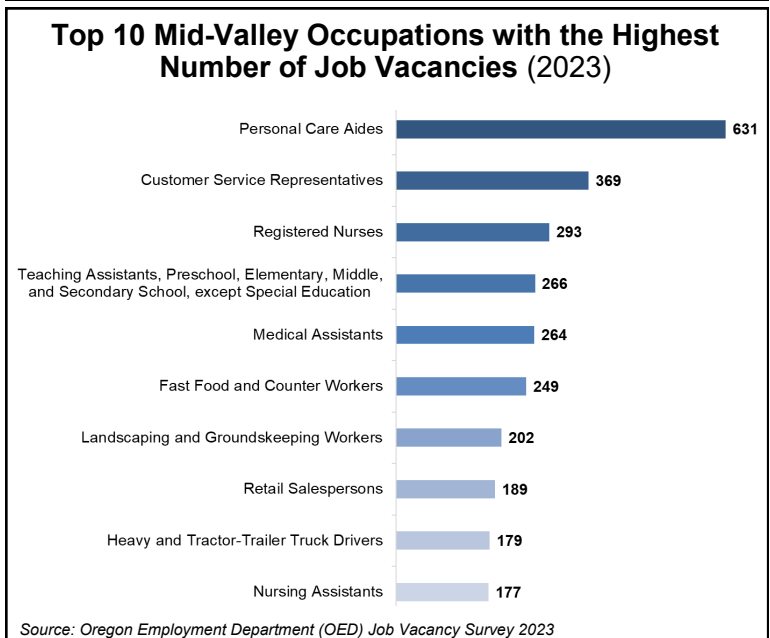
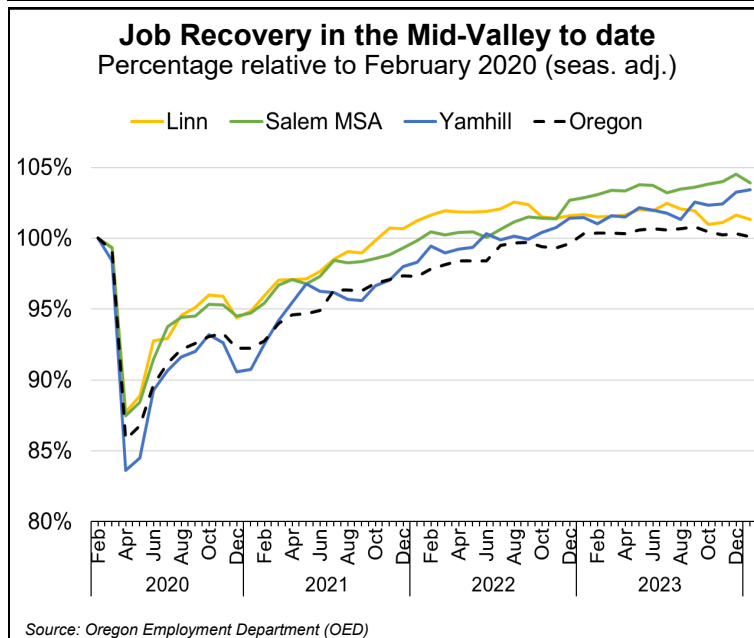
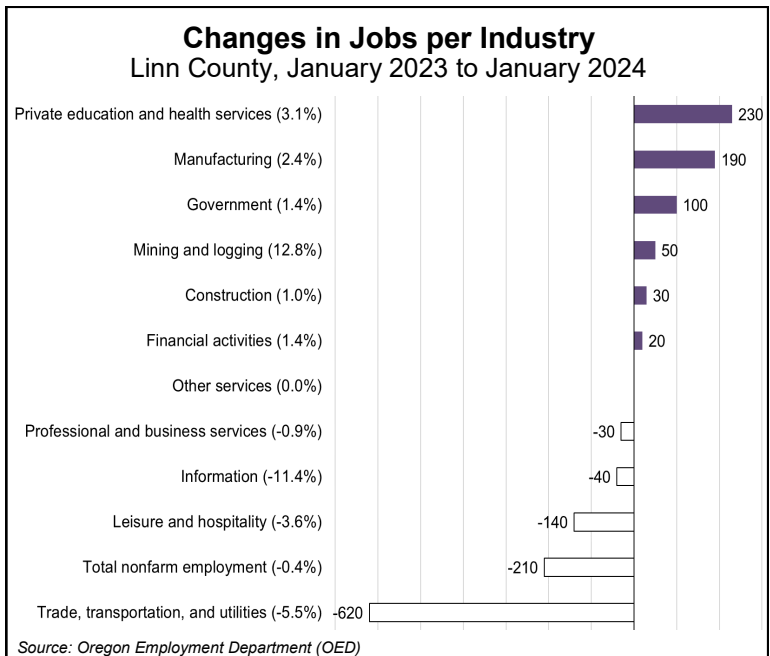
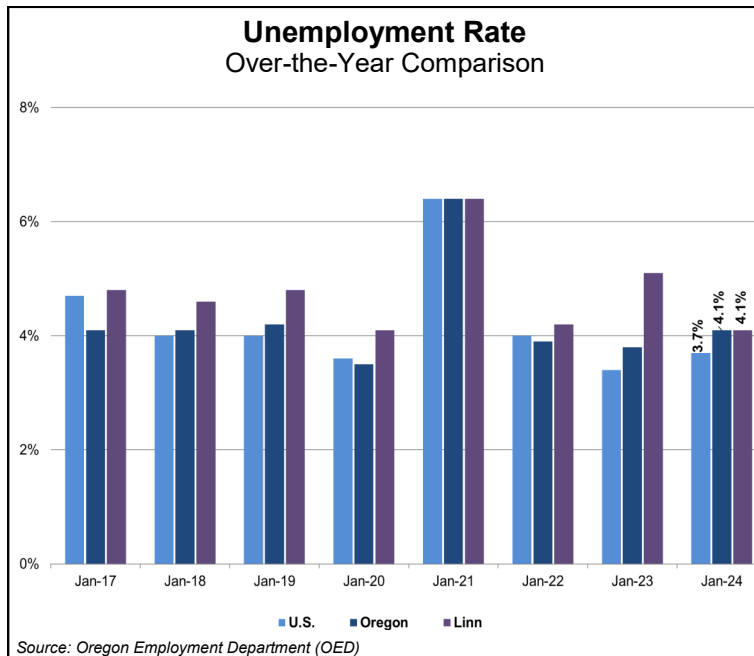


Mid-Valley Economic Indicators— Linn County, January Data

Linn County's seasonally adjusted unemployment rate was 4.1% in January, up slightly from December's rate of 4.0%. Similarly, Oregon's statewide unemployment rate increased from 4.0% in December to 4.1% in January. During this time, seasonally adjusted employment decreased by 130 jobs, and employment is now 630 jobs, or 1.3% above the February 2020 pre-pandemic employment level.

From January of last year to January of this year, total nonfarm employment decreased by 0.4%, or by 210 jobs. Private education and health services had the largest employment gains over the year (+230 jobs), followed by the manufacturing industry (+190 jobs). The trade, transportation, and utilities industry had the greatest employment losses (-620 jobs), followed by the leisure and hospitality industry (-140 jobs).

HELP WANTED IN THE MID-VALLEY— In the Mid-Valley, there were a reported 9,200 job vacancies at any given time in 2023. The number of Mid-Valley vacancies declined in 2023 after two years of record highs. Healthcare support occupations represented the group with the most vacancies, followed by office and administrative support. Over half (55%) of the Mid-Valley job vacancies required no education beyond high school, and the average hourly wage for all vacant Mid-Valley positions was \$23.51. To learn more about regional and statewide job vacancies, you can visit our Job Vacancy Survey section on the publications page of QualityInfo.org, where you can also find an [article on Oregon](#) job vacancies.



For more information and/or to be added to the monthly e-mail distribution list, contact:

Jordan Macias, Workforce Analyst, Oregon Employment Dept.
Serving Linn, Marion, Polk and Yamhill counties
jordan.a.macias@employ.oregon.gov | Tel.: (541) 223-4954

Join the conversation and stay informed.
Qualityinfo.org/mid-valley

Contact us for online presentations and speaking engagements.

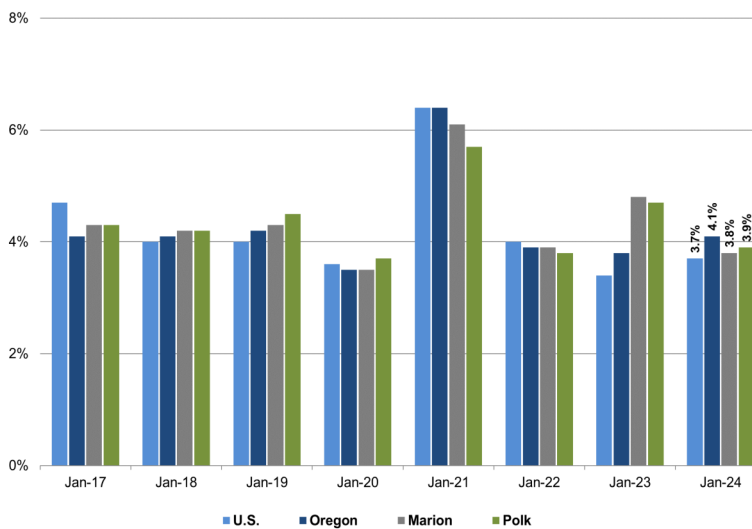
Mid-Valley Economic Indicators— Salem MSA, January Data

The Salem MSA's seasonally adjusted unemployment rate was 4.0% in January, up from 3.8% in December. Statewide, the unemployment rate increased to 4.1% from 4.0% in December. Seasonally adjusted employment was down 1100 jobs, and employment is now 3.9%, or 6,800 jobs, above the February 2020 pre-pandemic employment level.

Year-over-year, total nonfarm employment is up 1.2%, or 2,200 jobs. During this time, the public sector saw the largest employment gains (+1,500 jobs), followed by the private education and health services industry (+1,200 jobs) and the professional and business services industry (+200 jobs). In contrast, the trade, transportation, and utilities industry registered the largest employment losses (-700 jobs), followed by the financial activities industry (-300 jobs).

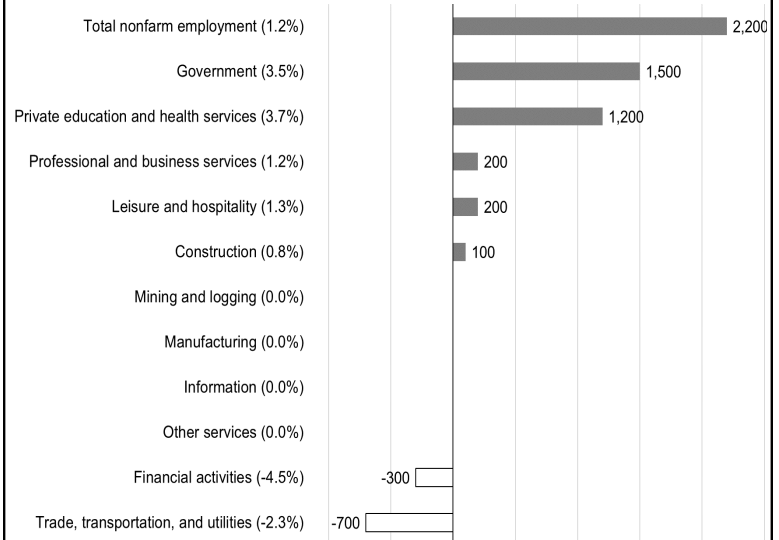
HELP WANTED IN THE MID-VALLEY— In the Mid-Valley, there were a reported 9,200 job vacancies at any given time in 2023. The number of Mid-Valley vacancies declined in 2023 after two years of record highs. Healthcare support occupations represented the group with the most vacancies, followed by office and administrative support. Over half (55%) of the Mid-Valley job vacancies required no education beyond high school, and the average hourly wage for all vacant Mid-Valley positions was \$23.51. To learn more about regional and statewide job vacancies, you can visit our Job Vacancy Survey section on the publications page of QualityInfo.org, where you can also find an [article on Oregon](#) job vacancies.

Unemployment Rate Over-the-Year Comparison



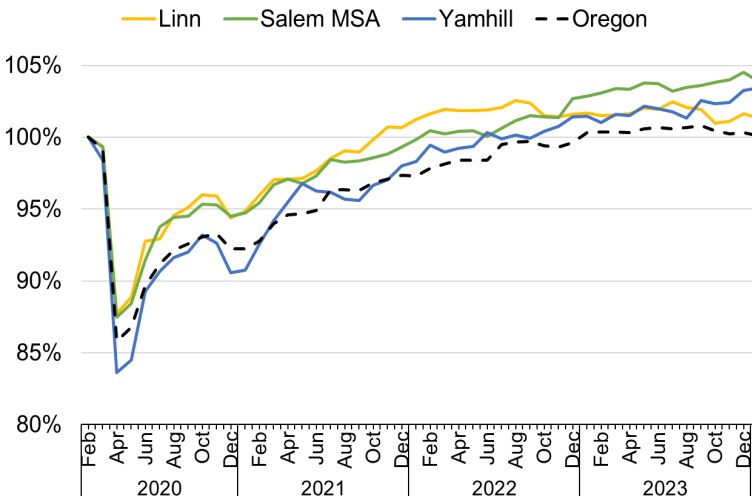
Source: Oregon Employment Department (OED)

Changes in Jobs per Industry Salem MSA, January 2023 to January 2024



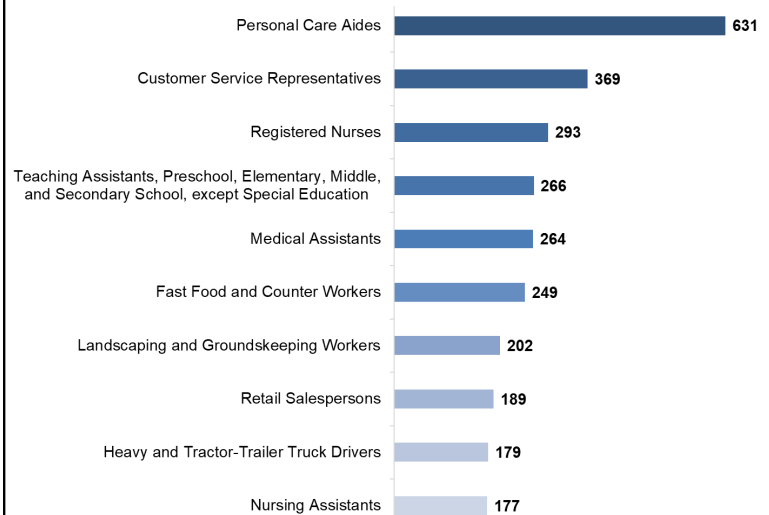
Source: Oregon Employment Department (OED)

Job Recovery in the Mid-Valley to date Percentage relative to February 2020 (seas. adj.)



Source: Oregon Employment Department (OED)

Top 10 Mid-Valley Occupations with the Highest Number of Job Vacancies (2023)



Source: Oregon Employment Department (OED) Job Vacancy Survey 2023

For more information and/or to be added to the monthly e-mail distribution list, contact:

Jordan Macias, Workforce Analyst, Oregon Employment Dept.
Serving Linn, Marion, Polk and Yamhill counties
jordan.a.macias@employ.oregon.gov | Tel.: (541) 223-4954

Join the conversation and stay informed.

Qualityinfo.org/mid-valley

Contact us for online presentations and speaking engagements.

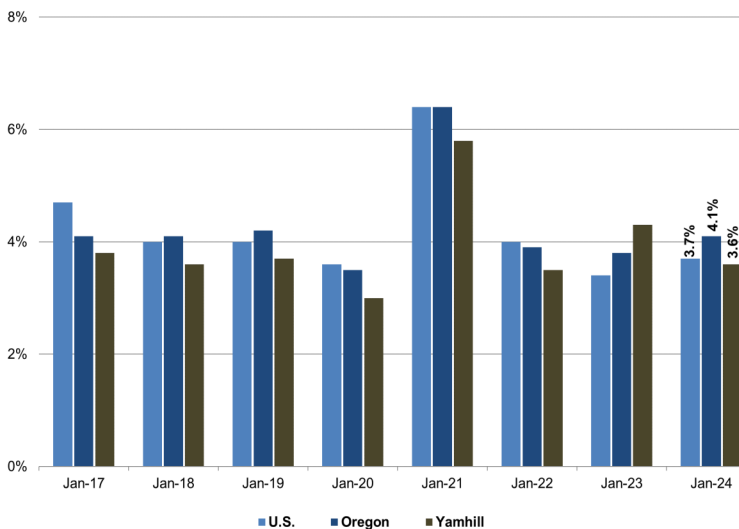
Mid-Valley Economic Indicators— Yamhill County, January Data

Yamhill County's seasonally adjusted unemployment rate increased slightly from 3.4% in December to 3.6% in January. Statewide, the unemployment rate increased from 4.0% in December to 4.1% in January, while the nation's rate was unchanged in January at 3.7%. The county's seasonally adjusted employment increased by 70 jobs during this time, and employment is now 1,220 jobs, or 3.4%, above the pre-pandemic employment level of February 2020.

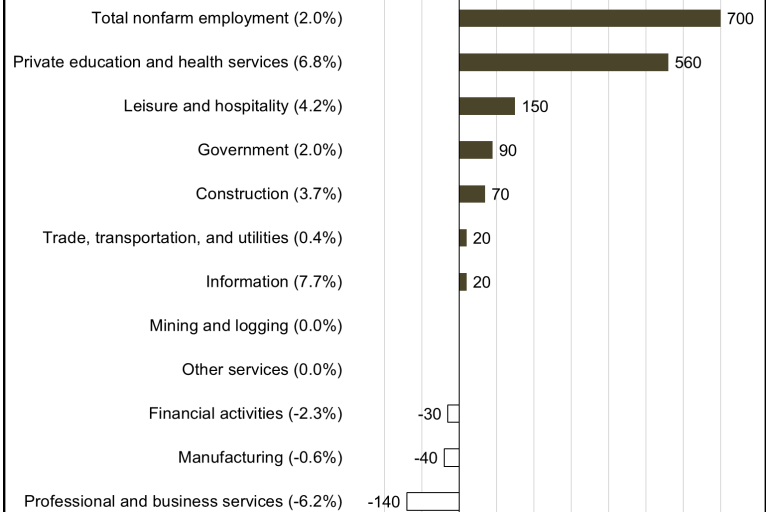
Year-over-year, total nonfarm employment increased by 2.0%, or 700 jobs. The private education and health services industry gained the most jobs during this time (+560), followed by the leisure and hospitality industry (+150 jobs) and the public sector (+90 jobs). The professional and business services industry registered the most employment losses (-140 jobs), followed by the manufacturing industry (-40 jobs) and the financial activities industry (-30 jobs).

HELP WANTED IN THE MID-VALLEY— In the Mid-Valley, there were a reported 9,200 job vacancies at any given time in 2023. The number of Mid-Valley vacancies declined in 2023 after two years of record highs. Healthcare support occupations represented the group with the most vacancies, followed by office and administrative support. Over half (55%) of the Mid-Valley job vacancies required no education beyond high school, and the average hourly wage for all vacant Mid-Valley positions was \$23.51. To learn more about regional and statewide job vacancies, you can visit our Job Vacancy Survey section on the publications page of [QualityInfo.org](https://www.qualityinfo.org), where you can also find an [article on Oregon](#) job vacancies.

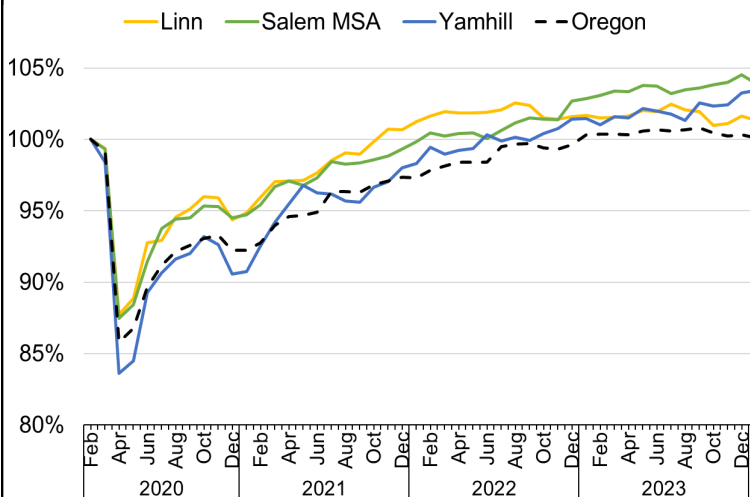
Unemployment Rate Over-the-Year Comparison



Changes in Jobs per Industry Yamhill County, January 2023 to January 2024



Job Recovery in the Mid-Valley to date Percentage relative to February 2020 (seas. adj.)



Top 10 Mid-Valley Occupations with the Highest Number of Job Vacancies (2023)



For more information and/or to be added to the monthly e-mail distribution list, contact:

Jordan Macias, Workforce Analyst, Oregon Employment Dept.
Serving Linn, Marion, Polk and Yamhill counties
jordan.a.macias@employ.oregon.gov | Tel.: (541) 223-4954

Join the conversation and stay informed.
[Qualityinfo.org/mid-valley](https://www.qualityinfo.org/mid-valley)

Contact us for online presentations and speaking engagements.