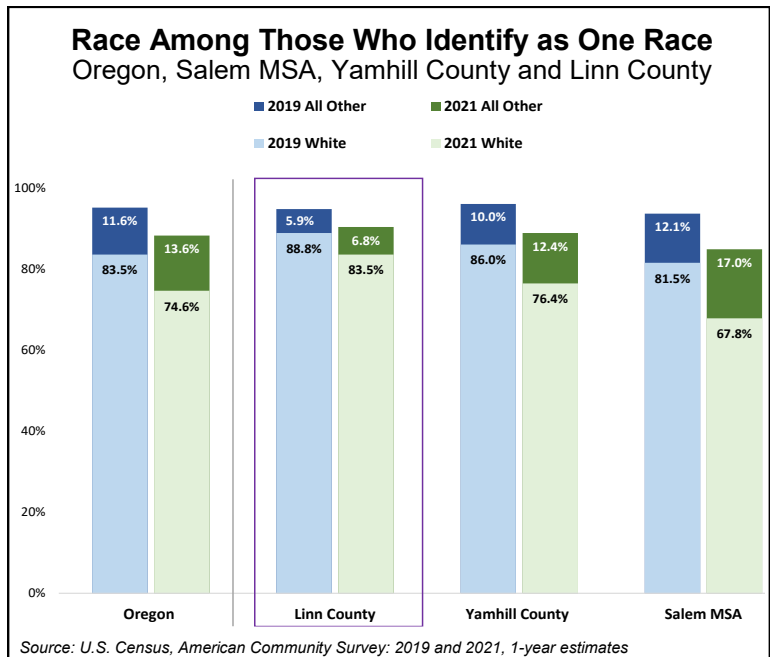
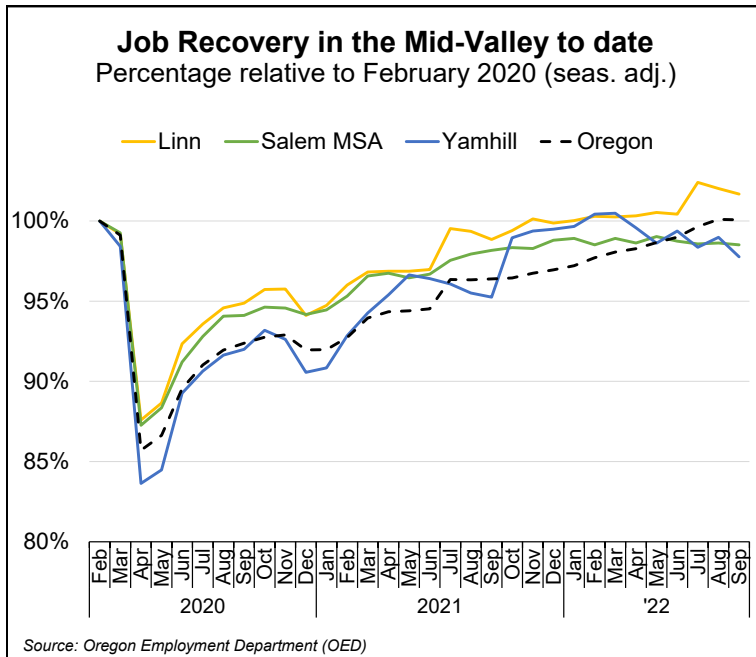
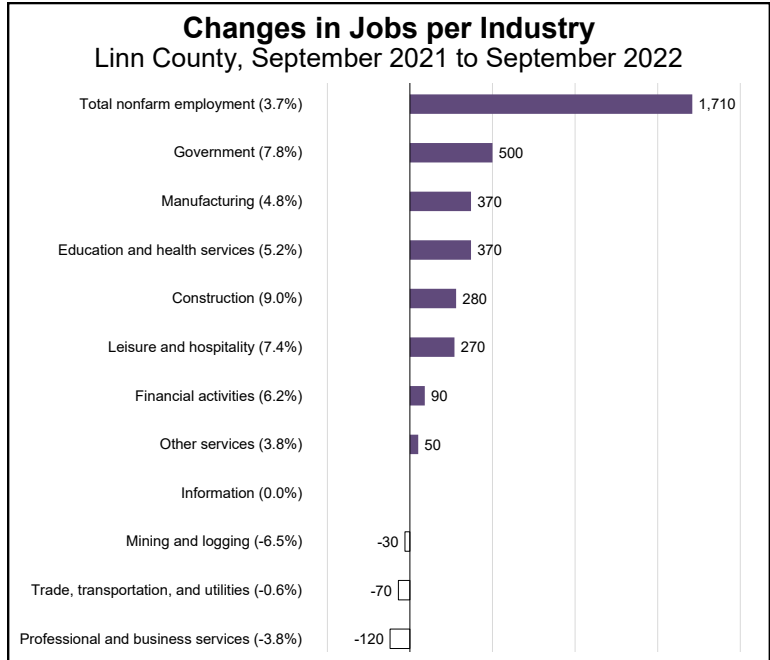
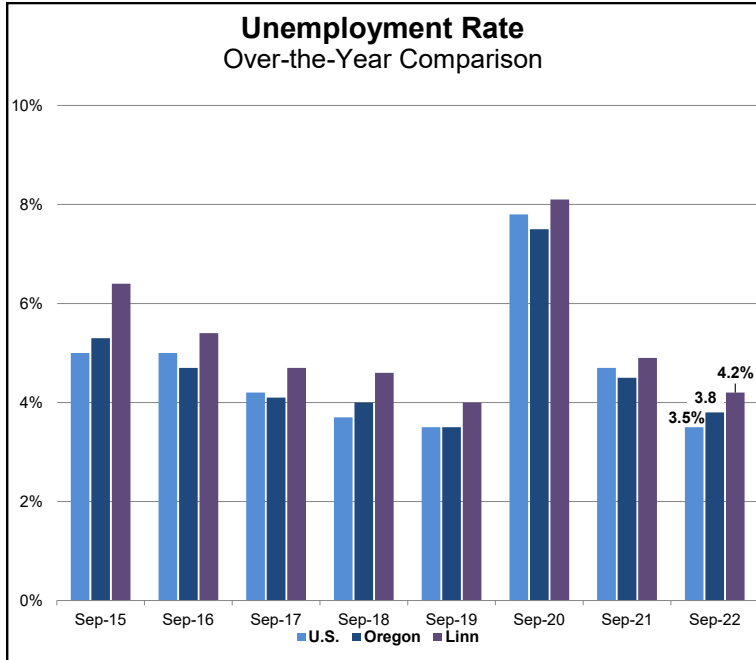


Mid-Valley Economic Indicators— Linn County, September Data

In September, Linn County's seasonally adjusted unemployment rate increased slightly to 4.2% from 4.0% in August. Similarly, the state unemployment rates went from 3.7% in August to 3.8% in September. Over the month, seasonally adjusted employment decreased and employment is now 790 jobs, or 1.7%, above the pre-pandemic employment level in February 2020.

From September of last year to this year, total nonfarm employment grew by 3.7%, or by 1,710 jobs. The government had the largest employment gains over the year (+500 jobs), followed closely by the manufacturing industry (+370 jobs). The professional and business services industry had the greatest employment losses (-120 jobs) during this time.

DIVERSITY ON THE RISE — In 2021, the American Community Survey (ACS) estimated that 90.3% of individuals living in Linn County were one race. Of these individuals, the large majority were white (83.5%). In comparison, in 2019, 94.7% of individuals reported being one race, of which 88.8% reported being white. Accordingly, from 2019 to 2021, the percentage of individuals considered one race other than white, grew by 0.9 percentage points, and now stands at 6.8% of the total population. Similarly, the percentage of individuals that are multi-race increased by 4.4 percentage points during this time.



For more information and/or to be added to the monthly e-mail distribution list, contact:

Nicole S. Ramos, Workforce Analyst, Oregon Employment Dept.
Serving Linn, Marion, Polk and Yamhill counties
nicole.s.amos@employ.oregon.gov
Tel.: (541) 223-4954

Join the conversation and stay informed.

[Qualityinfo.org/mid-valley](https://www.qualityinfo.org/mid-valley)

Twitter: @OED_Research

Contact us for online presentations and speaking engagements.

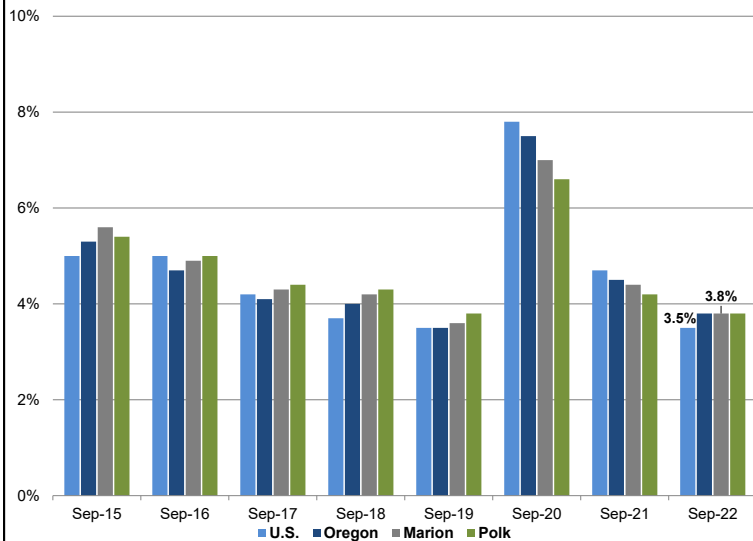
Mid-Valley Economic Indicators— Salem MSA, September Data

For the second time this year, the Salem MSA's seasonally adjusted unemployment rate increased, and as of September, it is 3.8%, up from 3.6% in August. Between August and September, seasonally adjusted employment in the Salem MSA decreased by 200 and remains 1.5%, or 2,600 jobs, below the February 2020 pre-pandemic employment level.

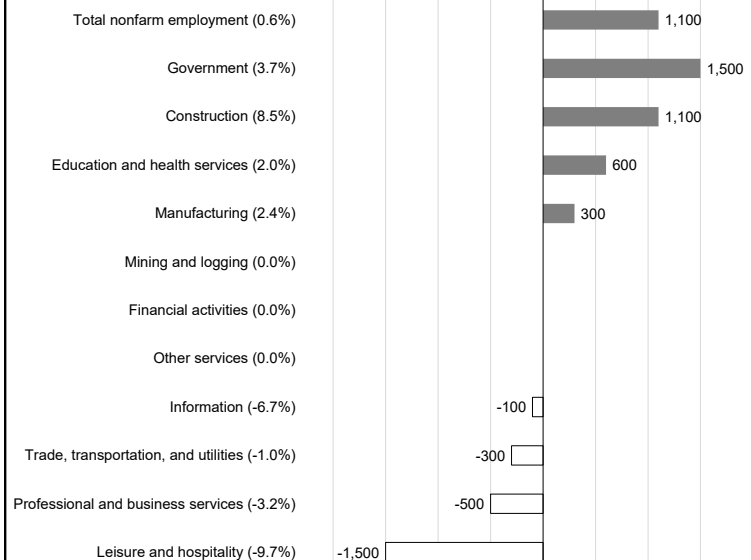
Year-over-year, total nonfarm employment was up 0.6%, or 1,100 jobs. Employment in government (+1,500 jobs) saw the largest gains (+1,500 jobs), followed by the construction industry (+1,100 jobs). Employment in the leisure and hospitality industry had the largest losses (-1,500 jobs), followed by the professional and business services industry (-500).

DIVERSITY ON THE RISE — In 2021, the American Community Survey (ACS) estimated that 84.8% of individuals living in the Salem MSA were one race. Of these individuals, the large majority were white (67.8%). In comparison, in 2019 93.6% of individuals reported being one race, of which 81.5% reported being white. Accordingly, from 2019 to 2021, the percentage of individuals considered one race other than white, grew by 4.9 percentage points, and now stands at 17.0% of the total population. Similarly, the percentage of individuals that are multi-race increased by 8.8 percentage points during this time.

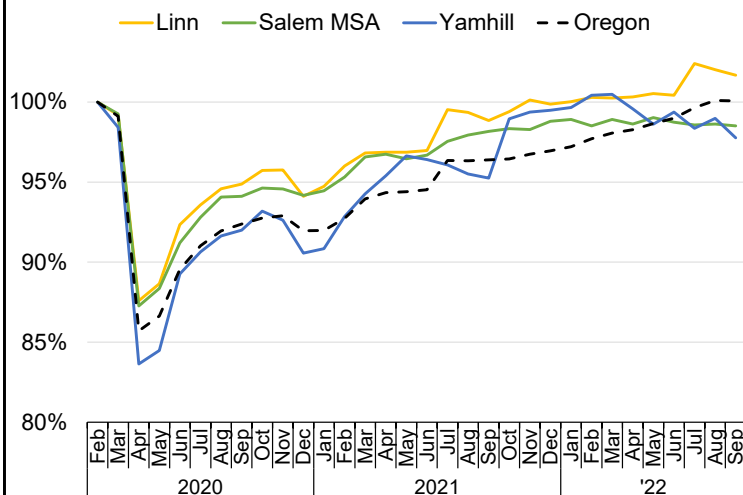
Unemployment Rate
Over-the-Year Comparison



Changes in Jobs per Industry
Salem MSA, September 2021 to September 2022

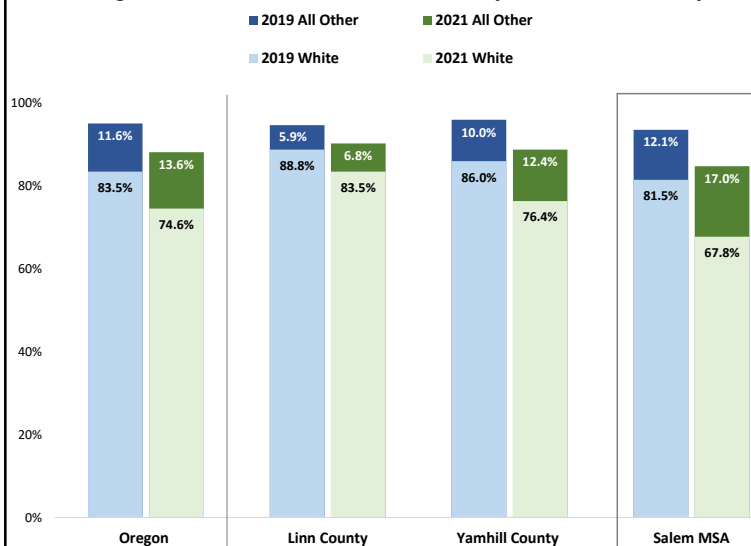


Job Recovery in the Mid-Valley to date
Percentage relative to February 2020 (seas. adj.)



Source: Oregon Employment Department (OED)

Race Among Those Who Identify as One Race
Oregon, Salem MSA, Yamhill County and Linn County



Source: U.S. Census, American Community Survey: 2019 and 2021, 1-year estimates

For more information and/or to be added to the monthly e-mail distribution list, contact:

Nicole S. Ramos, Workforce Analyst, Oregon Employment Dept.
Serving Linn, Marion, Polk and Yamhill counties
nicole.s.amos@employ.oregon.gov
Tel.: (541) 223-4954

Join the conversation and stay informed.

[Qualityinfo.org/mid-valley](https://www.qualityinfo.org/mid-valley)

Twitter: @OED_Research

Contact us for online presentations and speaking engagements.

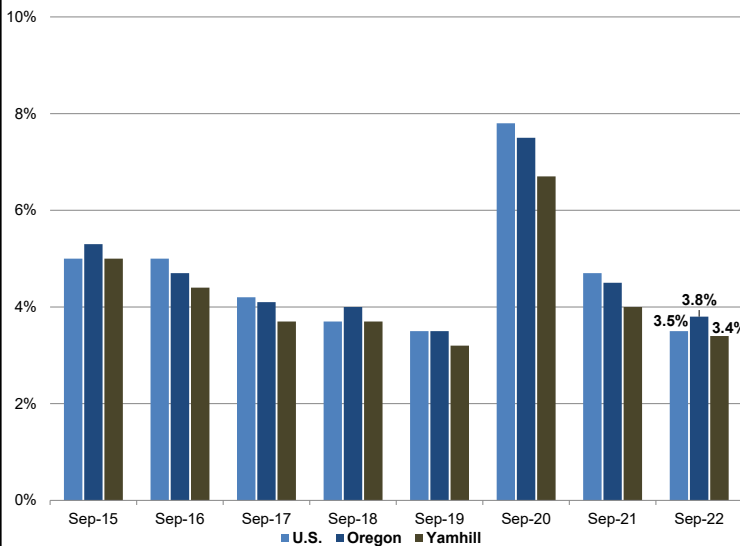
Mid-Valley Economic Indicators— Yamhill County, September Data

Yamhill County's seasonally adjusted unemployment rate increased from August to September of this year and is now 3.4%. In the Mid-Valley region, Yamhill County continues to have the lowest unemployment rate, almost matching the national unemployment rate of 3.5% in September. Seasonally adjusted employment decreased by 430 jobs during this time, and employment is now 790 jobs, or 2.2%, below the pre-pandemic employment level of February 2020.

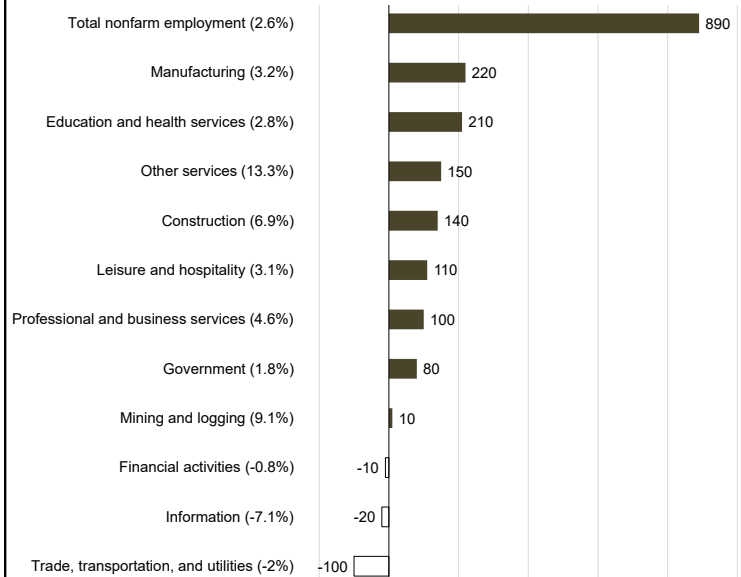
Year-over-year, total nonfarm employment increased by 2.6%, or 890 jobs, with the manufacturing industry gaining the most jobs (+220), followed closely by the education and health services industry (+210 jobs). As for losses, the trade, transportation, and utilities industries lost the most jobs (-100).

DIVERSITY ON THE RISE — In 2021, the American Community Survey (ACS) estimated that 88.8% of individuals living in Yamhill County were one race. Of these individuals, the large majority were white (76.4%). In comparison, in 2019, 96.0% of individuals reported being one race, of which 86.0% reported being white. Accordingly, from 2019 to 2021, the percentage if individuals considered one race other than white, grew by 2.4 percentage points, and now stands at 12.4% of the total population. Similarly, the percentage of individuals that are multi-race increased by 7.2 percentage points during this time.

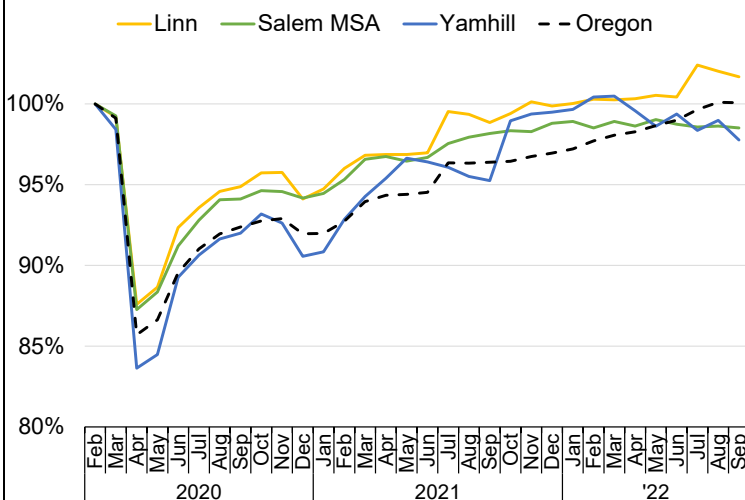
**Unemployment Rate
Over-the-Year Comparison**



**Changes in Jobs per Industry
Yamhill County, September 2021 to September 2022**

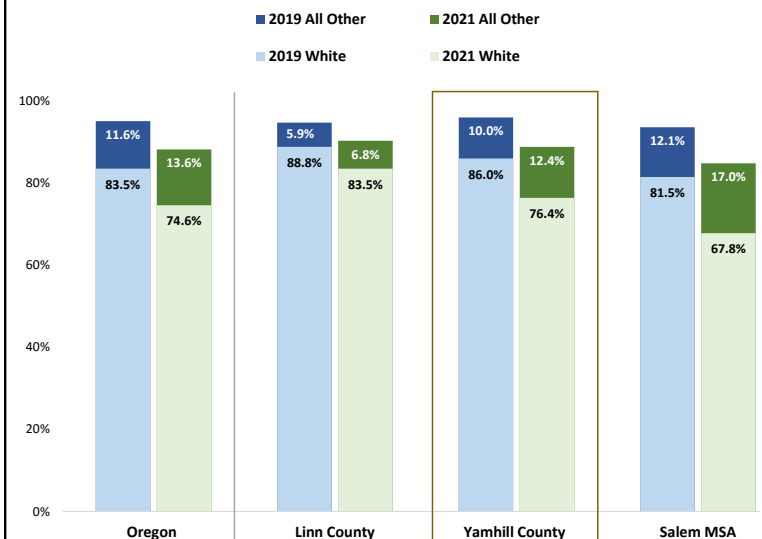


**Job Recovery in the Mid-Valley to date
Percentage relative to February 2020 (seas. adj.)**



Source: Oregon Employment Department (OED)

**Race Among Those Who Identify as One Race
Oregon, Salem MSA, Yamhill County and Linn County**



Source: U.S. Census, American Community Survey: 2019 and 2021, 1-year estimates

For more information and/or to be added to the monthly e-mail distribution list, contact:

Nicole S. Ramos, Workforce Analyst, Oregon Employment Dept.
Serving Linn, Marion, Polk and Yamhill counties
nicole.s.amos@employ.oregon.gov
Tel.: (541) 223-4954

Join the conversation and stay informed.

[Qualityinfo.org/mid-valley](https://www.qualityinfo.org/mid-valley)

Twitter: @OED_Research

Contact us for online presentations and speaking engagements.