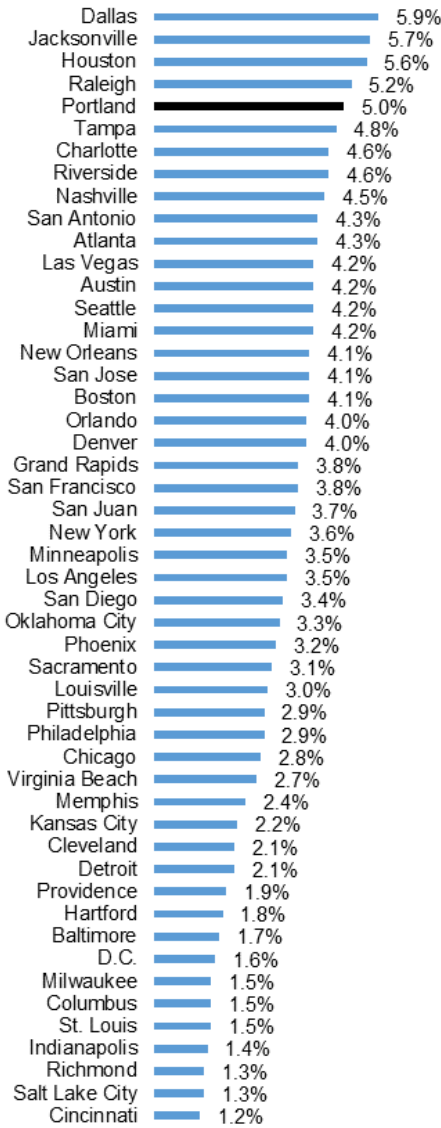


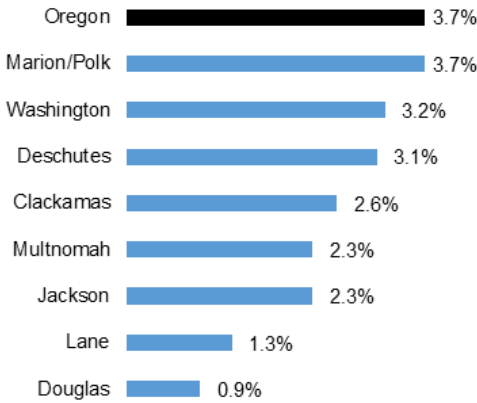
Job Growth by U.S. Metro

Percentage Growth - Dec. 2021 to Dec. 2022



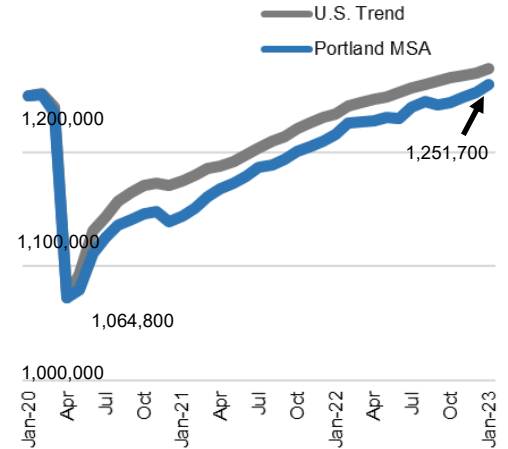
Employment Growth by County

Jan. 2022 to Jan. 2023 - By County



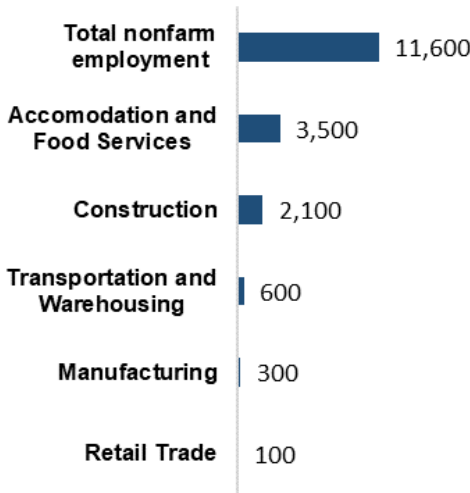
Employment in Portland Metro

Jan. 2020 to Jan. 2023 (seasonally adjusted)



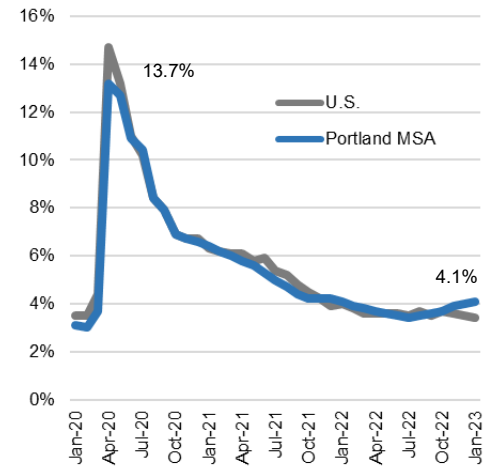
Select Industry Gains and Losses

Multnomah County, Jan. 2022 to Jan. 2023



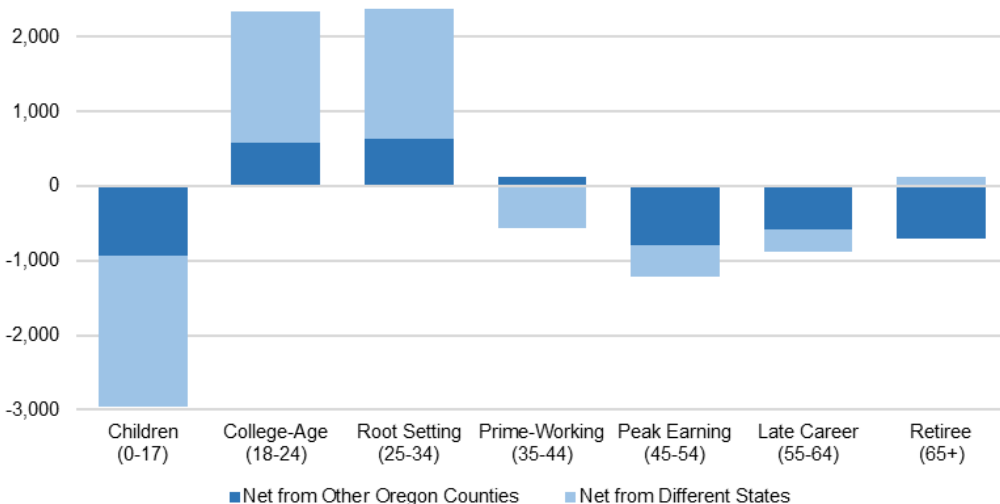
Unemployment Rate Portland Metro

January 2020 through January 2023 (Seasonally Adjusted)



Net Domestic Migration to Multnomah County by Age

Source: Census, 2021 5-Year American Community Survey



Multnomah County Tends to Attract Younger Populations

Net domestic migration data from the 2021 5-Year American Community Survey (ACS) shows that 20- and 30-somethings tend to migrate to Multnomah County, while people 35 and older tend to migrate out of the county.

According to IRS tax return data, the vast majority of Multnomah inflows come from the other counties in the Portland metro area, including Washington, Clackamas and Clark (Wash.) counties. Major sources of inflow from out of state and Portland MSA include the Seattle, Los Angeles and San Francisco metro areas. Migrants departing Multnomah mostly end up in other parts of Oregon, including the Portland, Bend and Salem metro areas. The most popular destinations outside Oregon and the Portland MSA include the Seattle and Los Angeles metro areas.

**Want to join the distribution list?
Have questions? E-mail me!**

Jake Procino
Jake.D.Procino@employ.oregon.gov