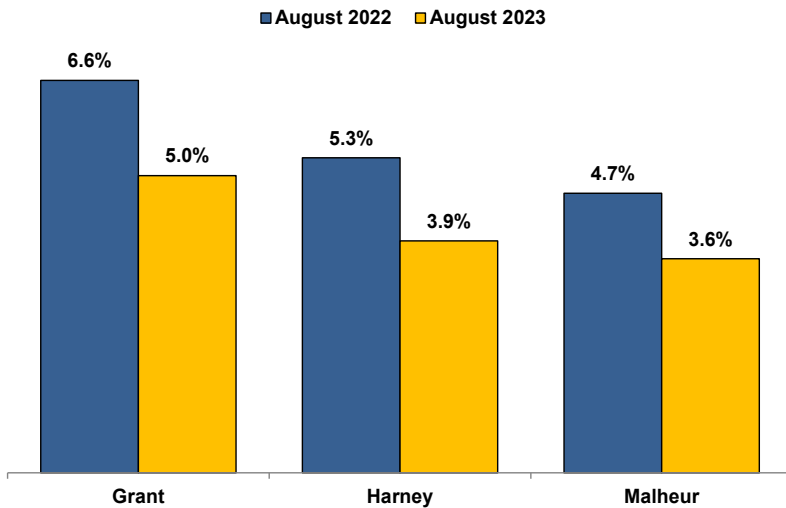


**Unemployment Rates (Seasonally Adjusted)**



**Unemployment Rate News**

Malheur County's seasonally adjusted unemployment rate for August 2023 was 3.6%, while Harney County came in at 3.9% and Grant County at 5.0%. All three counties' rates were above Oregon's statewide rate of 3.4%. Malheur County's rate was below the national rate of 3.8%.

Malheur County's rate tied for 11th lowest among Oregon's 36 counties for the month while Harney County's tied for 20th and Grant County's sat at 34th.

All three counties' rates were below their August 2022 rates.

All three counties' August 2023 rates were their lowest August rates since comparable statistics began in 1990. Over the same period, all three counties' rates were also their lowest rates for any month.

**Nonfarm Employment Change**

August 2022 to August 2023

Grant County added an estimated 40 jobs over the year. The private sector increased by 60 jobs led by a gain in manufacturing. Losses were confined to mining and logging; construction; and transportation, warehousing, and utilities. The public sector dropped 20 jobs with a loss in federal government over-coming gains in state government and local government.

Harney County lost an estimated 30 jobs over the year. The private sector dropped 90 jobs led by losses in goods-producing and professional and business services. Gains were confined to other services and education and health services. The public sector added 60 jobs with gains in local government, federal government, and state government.

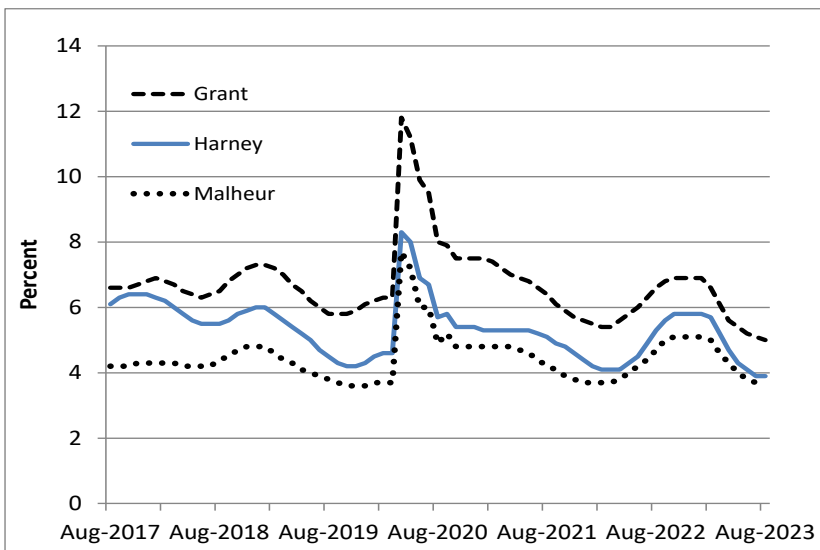
Malheur County employment increased by an estimated 160 jobs over the year. The private sector dropped 70 jobs with losses led by retail trade and professional and business services. Gains were led by transportation, warehousing, and utilities and other services. The public sector increased by 230 jobs with gains in state government, local government, and federal government.

**Notable Industry Gains and Losses**

Over-the-Year Employment Change from August 2022

Grant	Harney	Malheur
Manufacturing (+30)	Local Government (+40)	Local Government (+120)
Leisure/Hospitality (+20)	Other Services (+20)	State Government (+90)
Retail Trade (+10)	Private Education/Health Services (+10)	Transportation/Warehousing/Utilities (+40)
Private Education/Health Services (+10)	Federal Government (+10)	Other Services (+40)
Professional/Business Services (+10)	State Government (+10)	Mining/Logging/Construction (+20)
Federal Government (-40)	Goods-producing (-40)	Retail Trade (-90)
Mining/Logging (-10)	Professional/Business Services (-40)	Professional/Business Services (-50)
Construction (-10)	Wholesale Trade (-20)	Financial Activities (-20)
Transportation/Warehousing/Utilities (-10)		Leisure/Hospitality (-20)

**Unemployment rates reach record lows since 1990**



**Want to learn more about the Oregon economy?**

Follow us on Twitter at: [Twitter.com/OED\\_Research](https://twitter.com/OED_Research)

Visit our web site at: [QualityInfo.org](https://QualityInfo.org)

Visit our subscription service at: [qualityinfo.org/subscribe](https://qualityinfo.org/subscribe)

**For more economic or labor market data about Grant, Harney or Malheur counties, contact:**

**Tony Wendel, Workforce Analyst**

Cell: 541-667-7027

E-mail: [Tony.A.Wendel@employ.oregon.gov](mailto:Tony.A.Wendel@employ.oregon.gov)

**Want to be added to the monthly distribution list?**

E-mail me at: [Tony.A.Wendel@employ.oregon.gov](mailto:Tony.A.Wendel@employ.oregon.gov)