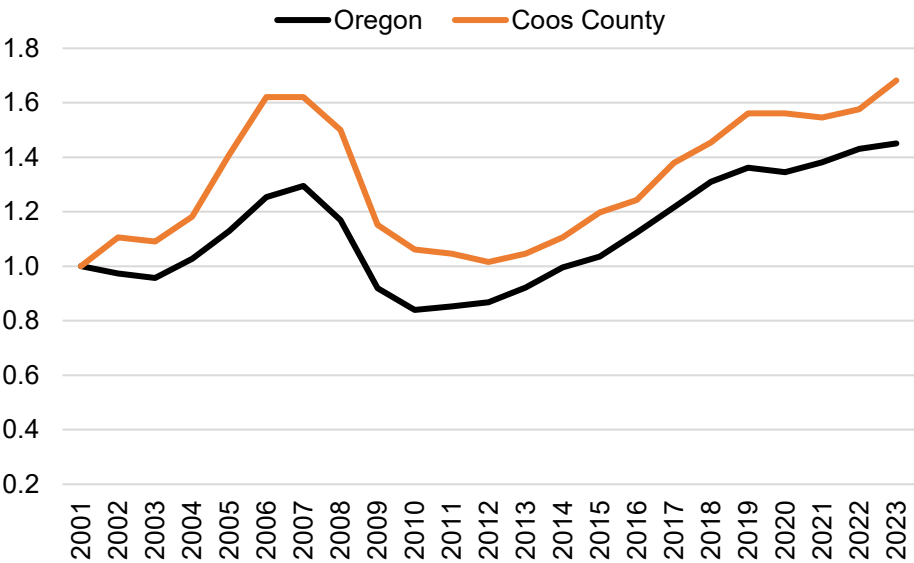


Special Topic: Construction Employment on the South Coast

Construction Employment Index
Annual Average, 2001 = 1



Construction has typically been one of the industries that is most sensitive to recession job loss, although 2020 was largely an exception. The special chart this month looks at indexed job growth in Oregon and Coos County with 2001 as its baseline.

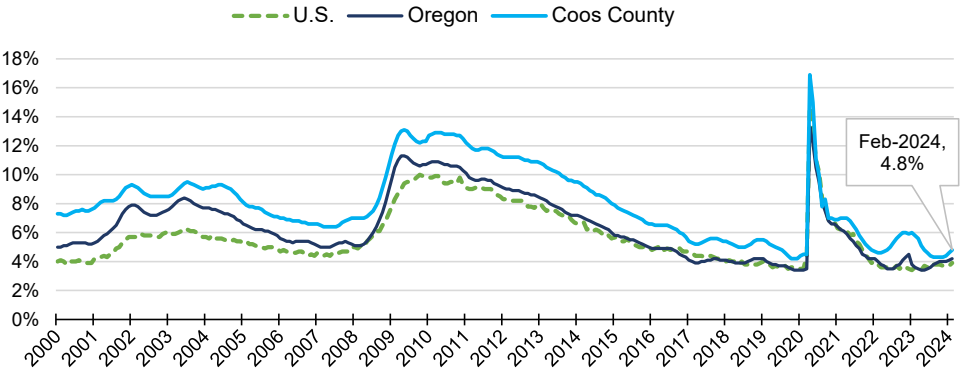
Coos County construction employment change has followed the same pattern as the statewide sector, although the area has outperformed the state in terms of job growth and recovery. Construction jobs in the state grew 45% since 2001, while Coos County jobs grew 68%.

Construction employment in the county and state exceeds the previous peak in 2007, meaning that all Great Recession era construction losses have been recovered. Construction dropped a few jobs in 2020, even as other industries saw dramatic losses.

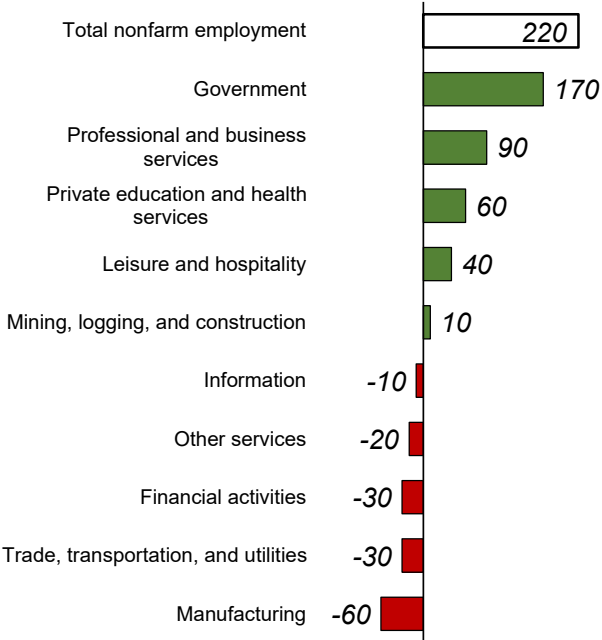
Source: Oregon Employment Department, Current Employment Statistics

Unemployment Rate at 4.8%

- Unemployment rate February 2023 was 5.8%
- Seasonally adjusted unemployment has ticked up slightly since Fall of 2023



Source: Oregon Employment Department, LAUS



Industry Employment Change: Feb. 2023 to Feb. 2024

Coos County adds 220 jobs over the year

[Detailed February Employment Press Release](#)

Henry Fields—Workforce Analyst for Southern Oregon

Henry.L.Fields@employ.oregon.gov

(541) 359 - 9178

[QualityInfo.org](#): Your source for the latest economic data, highlights, and analysis.

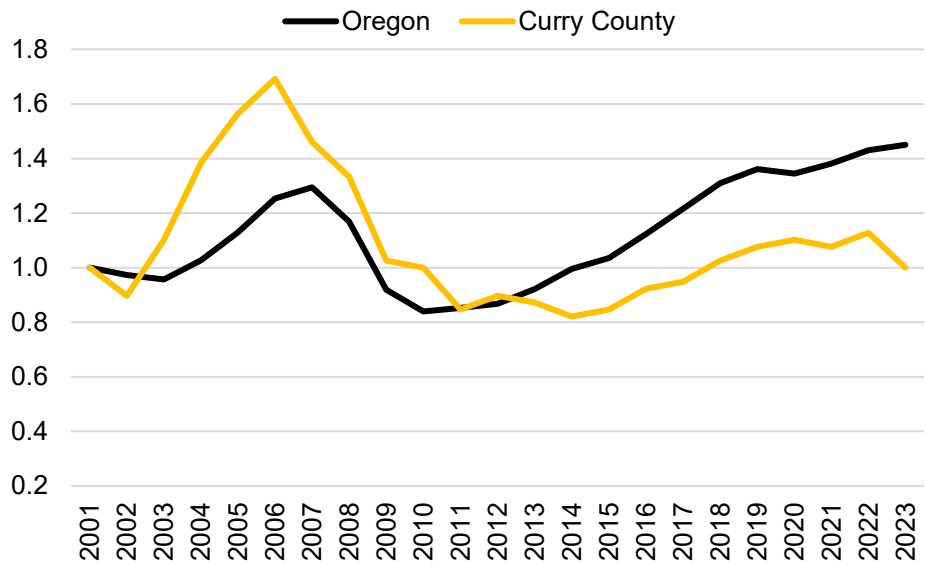
Explore more on Southwestern Oregon's economy here:

[Southwestern Oregon: The Latest Research](#)

Special Topic: Construction Employment on the South Coast

Construction Employment Index

Annual Average, 2001 = 1



Source: Oregon Employment Department, Current Employment Statistics

Construction has typically been one of the industries that is most sensitive to recession job loss, although 2020 was largely an exception. The special chart this month looks at indexed job growth in Oregon and Curry County with 2001 as its baseline.

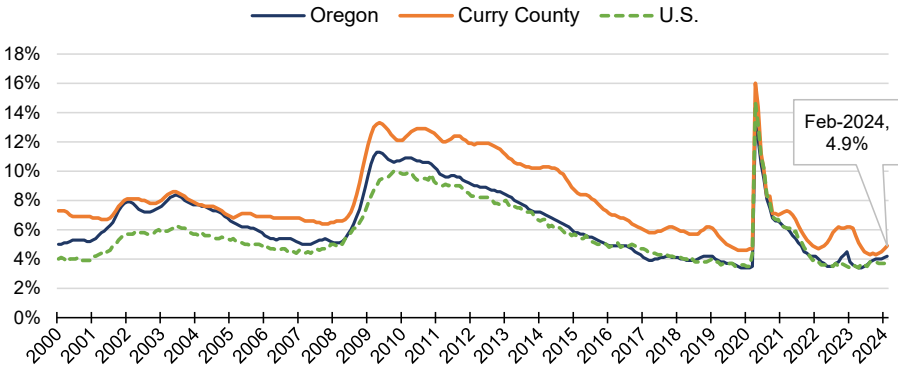
Because Curry County construction is a relatively small industry (maxing out at 660 jobs in 2006) and likely because much of the construction is seasonal and migration-driven, change over time is uneven. Relative to the state, the employment peak pre-Great Recession was higher, and losses during that recession deeper.

Since the mid 2010s, employment growth has been slow, with a widening gap relative to the state. Curry now has about as many jobs in construction as it did in 2001, while the state grew 45% during that time.

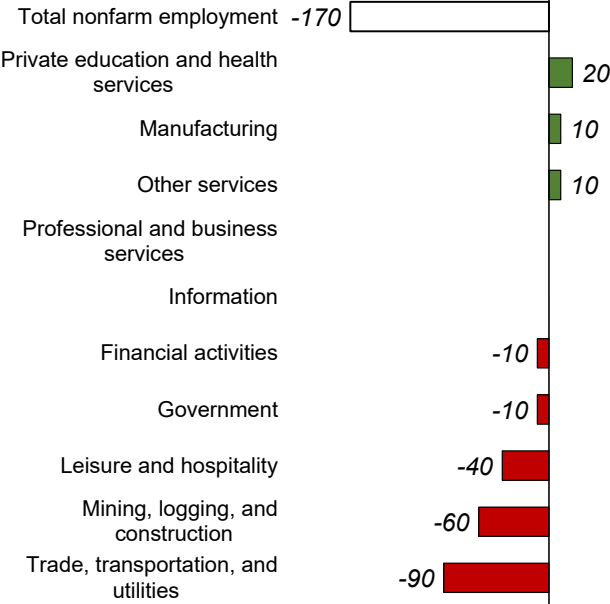
Unemployment Rate at 4.9%

- Seasonally adjust unemployment rate in February 2023 was 6.1%

[More info on unemployment](#)



Source: Oregon Employment Department, LAUS



Source: Oregon Employment Department, CES

Industry Employment Change: Feb. 2023 to Feb. 2024

Curry County employment declined by 170 jobs over the year

[Detailed February Employment Press Release](#)

Henry Fields—Workforce Analyst for Southern Oregon

Henry.L.Fields@employ.oregon.gov

(541) 359 - 9178

[QualityInfo.org](#): Your source for the latest economic data, highlights, and analysis.

Explore more on Southwestern Oregon's economy here:

[Southwestern Oregon: The Latest Research](#)

DOUGLAS COUNTY ECONOMIC INDICATORS

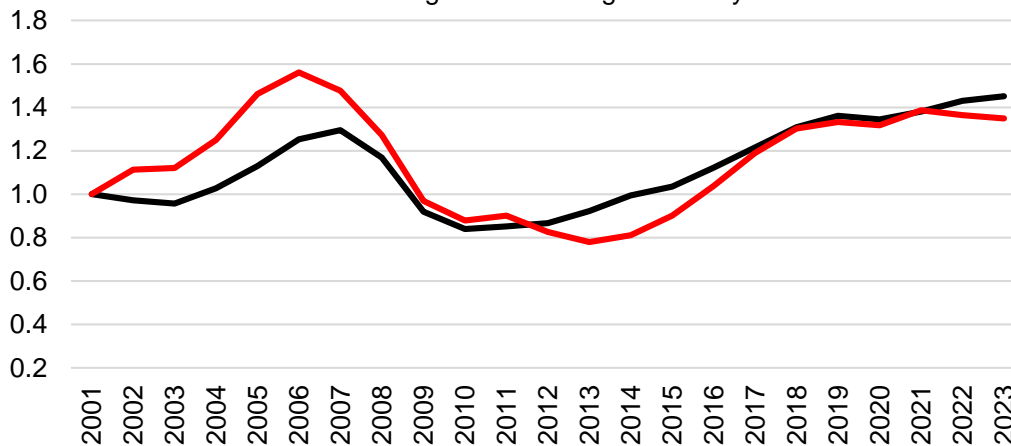
March 2024

Graph of the Month: Construction employment has historically been more sensitive to recessions than other industries, although it fared well in 2020. Douglas still has fewer construction jobs than in 2006, although indexed job growth since 2001 has nearly matched the state's (35% growth versus 45%).

Construction Employment Index

Annual Average, 2001 = 1

— Oregon — Douglas County



Source: Oregon Employment Department, Current Employment Statistics

Notable Over-the-Year Employment Changes

February 2023 to February 2024

Private Education and Health Services:

250 (+4%)

Manufacturing: -60 (-1%)

Professional and Business

Services: -220 (-7%)

Financial Activities: 40 (+3%)

All Industries: 70 (+0%)

Employment change from February 2020 ([seasonally adjusted](#)):

-550 (-1%)

Source: [Oregon Employment Department Current Employment Estimates](#)

News and Articles

QualityInfo: [High-Wage Jobs in the Leisure and Hospitality Industry](#) by Guy Tauer

QualityInfo: [Slow Job and Labor Force Growth: 2023 in Review](#) by Gail Krumenauer

Oregon Office of Economic Analysis Blog: [2023 County Population, Census Edition](#)

Latest Douglas County Economic Data

Unemployment rate: [4.9%](#)
(seasonally adjusted)

Change from previous
year: [-1.2 pct. points](#)

Occupation with the most
Oregon job vacancies in
2023: [Personal Care Aides](#)

Real Oregon median wage
gain, 2022 Q1-2023 Q1:
[+0.3%](#)

Business highlights: [new
openings, closings & hiring
events](#)

- **New Firm:** McClendon's Old Fashioned Meats and Smokehouse opened in Roseburg.
- **New Firm:** Aviva Health, a medical clinic, will open in Sutherlin.
- **Closure:** KC's Exchange, a gun store in Roseburg, will close.

[QualityInfo.org](#): your source
for the latest economic data,
highlights and analysis



Manage your subscriptions to
this newsletter and other data
releases on our [subscription
page](#).