

FOR IMMEDIATE RELEASE: September 24, 2024

CONTACT INFORMATION:

Brian Rooney, Regional Economist  
brian.t.rooney@employ.oregon.gov  
(541) 359-9546

## **Employment in Lane County (Eugene MSA)**

### **Lane County's Nonfarm Payroll Employment Drops by 1,100 Jobs in August**

Lane County's seasonally adjusted payroll employment dropped by 1,100 jobs in August after a decrease of 300 in July and an increase of 500 in June.

In the not seasonally adjusted private-sector industries in August, there was a gain in retail trade of 100. There were relatively large losses in private education and health services (-500) and accommodation and food services (-300).

Government dropped 1,300 jobs in August due to a seasonal loss of 1,000 due to summer break in local education, which includes the University of Oregon. There were additional losses of 100 each in federal government, state government, and noneducation local government.

When comparing August 2024 with August 2023, total nonfarm employment added 1,100 jobs on a seasonally adjusted basis for a gain of 0.7%. There were large over-the-year gains in leisure and hospitality (1,300), and private education and health services (1,000). There were losses in professional and business services (-500), manufacturing (-300), and other services (-300).

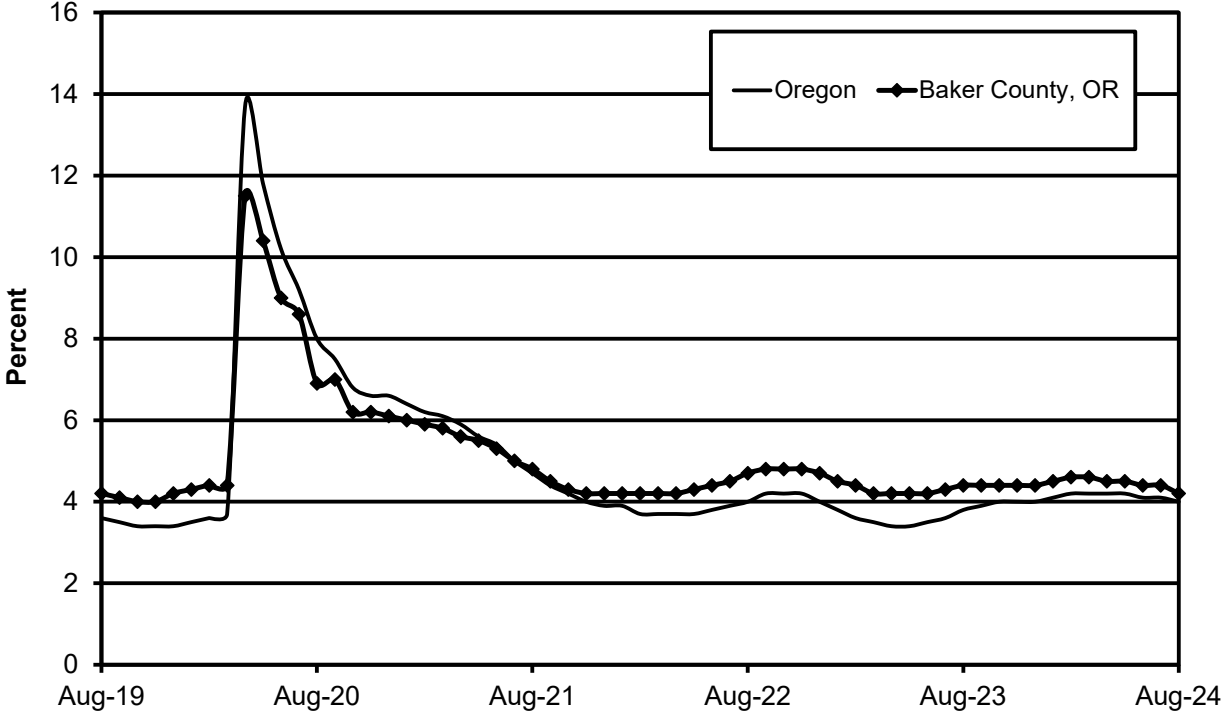
There was an over-the-year increase of 600 in government due to gains in noneducation local government (300), local education (200), and state government (100).

Lane County's seasonally adjusted unemployment rate was essentially unchanged at 4.1% in August compared with a revised 4.2% in July. The rate is higher than the 3.9% recorded in August 2023. Lane County's record low rate was 3.5% in November 2019. The Oregon seasonally adjusted August rate was 4.0% and the U.S. rate was 4.2%.

#### **Next Press Releases**

The Oregon Employment Department plans to release the September county and metropolitan area unemployment rates and employment survey data on Tuesday, Oct. 22<sup>nd</sup> and the statewide unemployment rate and employment survey data for September on Wednesday, Oct. 16<sup>th</sup>.

### Seasonally Adjusted Unemployment Rates





Workforce &amp; Economic Research Division

QualityInfo.org

September 24, 2024

## Eugene MSA Current Labor Force and Industry Employment

	--Change From--				
	August 2024	July 2024	August 2023	July 2024	August 2023
<b>Labor Force Status</b>					
Civilian labor force	183,968	184,984	180,427	-1,016	3,541
Unemployed	7,885	8,324	7,616	-439	269
Unemployment rate	4.3%	4.5%	4.2%	-0.2	0.1
<i>Unemployment rate (seasonally adjusted)</i>	4.1%	4.2%	3.9%	-0.1	0.2
Employed	176,083	176,660	172,811	-577	3,272
<b>Nonfarm Payroll Employment</b>					
Total nonfarm employment	161,900	163,900	160,100	-2,000	1,800
<i>Total nonfarm employment (seasonally adjusted)</i>	163,500	164,600	162,400	-1,100	1,100
Total private	135,300	136,000	134,100	-700	1,200
Mining, logging, and construction	9,000	9,000	9,100	0	-100
Mining and logging	900	900	900	0	0
Construction	8,100	8,100	8,200	0	-100
Manufacturing	14,500	14,600	14,800	-100	-300
Durable goods	9,400	9,400	9,400	0	0
Wood product manufacturing	3,900	3,900	3,700	0	200
Nondurable goods	5,100	5,200	5,400	-100	-300
Trade, transportation, and utilities	29,400	29,300	29,500	100	-100
Wholesale trade	6,200	6,200	6,200	0	0
Retail trade	19,600	19,500	19,700	100	-100
Food and beverage retailers	4,800	4,800	4,900	0	-100
Transportation, warehousing, and utilities	3,600	3,600	3,600	0	0
Information	2,100	2,100	2,000	0	100
Financial activities	8,800	8,900	8,700	-100	100
Professional and business services	17,700	17,700	18,200	0	-500
Administrative and support services	6,400	6,400	6,900	0	-500
Private education and health services	29,800	30,300	28,800	-500	1,000
Health care and social assistance	28,300	28,800	27,000	-500	1,300
Leisure and hospitality	18,900	19,000	17,600	-100	1,300
Accommodation and food services	16,200	16,500	15,500	-300	700
Food services and drinking places	14,200	14,500	13,800	-300	400
Other services	5,100	5,100	5,400	0	-300
Government	26,600	27,900	26,000	-1,300	600
Federal government	2,000	2,100	2,000	-100	0
State government	2,000	2,100	1,900	-100	100
State education	0	0	0	0	0
Local government	22,600	23,700	22,100	-1,100	500
Local education	14,300	15,300	14,100	-1,000	200

The most recent month is preliminary, the prior month is revised. Prepared in cooperation with the U.S. Department of Labor, Bureau of Labor Statistics.

Civilian labor force includes employed and unemployed individuals 16 years and older by place of residence. Employed includes payroll employment, self-employed, unpaid family workers, domestics, agriculture, and labor disputants. Unemployment rate is calculated by dividing unemployed by civilian labor force.

Nonfarm Payroll Employment: Official Oregon Series. Data are by place of work and cover full- and part-time employees who worked or received pay for the pay period that includes the 12th of the month. The data exclude the self-employed, volunteers, unpaid family workers, and domestics.

The Oregon Employment Department and the U.S. Bureau of Labor Statistics (BLS) work cooperatively to develop and publish monthly payroll employment and labor force data for Oregon's metropolitan areas and counties. The estimates of monthly job gains and losses are based on a survey of businesses. The estimates of unemployment are based on a survey of households and other sources.

The Oregon Employment Department payroll employment estimates are revised quarterly using information from unemployment insurance tax records. All department publications use data from this *official Oregon series* unless noted.

The department also makes the BLS-produced nonfarm payroll employment series for metropolitan areas available. These are revised annually by BLS.

You can subscribe to receive notification of new articles and publications from QualityInfo.org. To subscribe, go to [www.qualityinfo.org/subscribe](http://www.qualityinfo.org/subscribe), enter your email address and click Sign In. In the Publication section, click on the + sign next to a report type category and then click on the geography(s) you are interested in. Take some time to browse the other publications on the page and see if there are some you'd like to receive an email notification for. You can receive notifications on a daily, weekly, or monthly schedule – whichever is most convenient for you. You can change your preferences – or unsubscribe – at any time.

The pdf version of the news release, including tables and graphs, can be found at [www.qualityinfo.org/press-release/](http://www.qualityinfo.org/press-release/). To obtain the data in other formats such as in Excel, visit QualityInfo.org, select Tools, and choose LAUS or CES from the dropdown menu. To request the press release as a Word document, contact the person shown at the top of this press release.

To file an Unemployment Insurance claim, visit our online claims system or call our contact centers, where Employment Department staff are ready to help by phone, at 1-877-FILE-4-UI (1-877-345-3484). For help finding jobs and training resources, go to: [www.WorkSourceOregon.org](http://www.WorkSourceOregon.org).

The Oregon Employment Department (OED) is an equal opportunity agency. Everyone has a right to use OED programs and services. OED provides free help. Some examples are: Sign language and spoken language interpreters, written materials in other languages, braille, large print, audio and other formats. If you need help, please call 971-673-6400. TTY users call 711. You can also ask for help at [OED\\_Communications@employ.oregon.gov](mailto:OED_Communications@employ.oregon.gov).

El Departamento de Empleo de Oregon (OED) es una agencia de igualdad de oportunidades. El OED proporciona ayuda gratuita para que usted pueda utilizar nuestros servicios. Algunos ejemplos son intérpretes de lengua de señas e idiomas hablados, materiales escritos en otros idiomas, letra grande, audio y otros formatos. Para obtener ayuda, por favor llame al 503-947-1444. Usuarios de TTY pueden llamar al 711. También puede enviar un correo electrónico a [OED\\_Communications@employ.oregon.gov](mailto:OED_Communications@employ.oregon.gov).

###